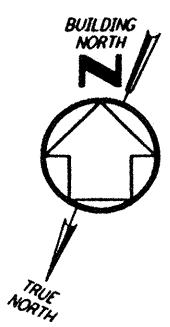
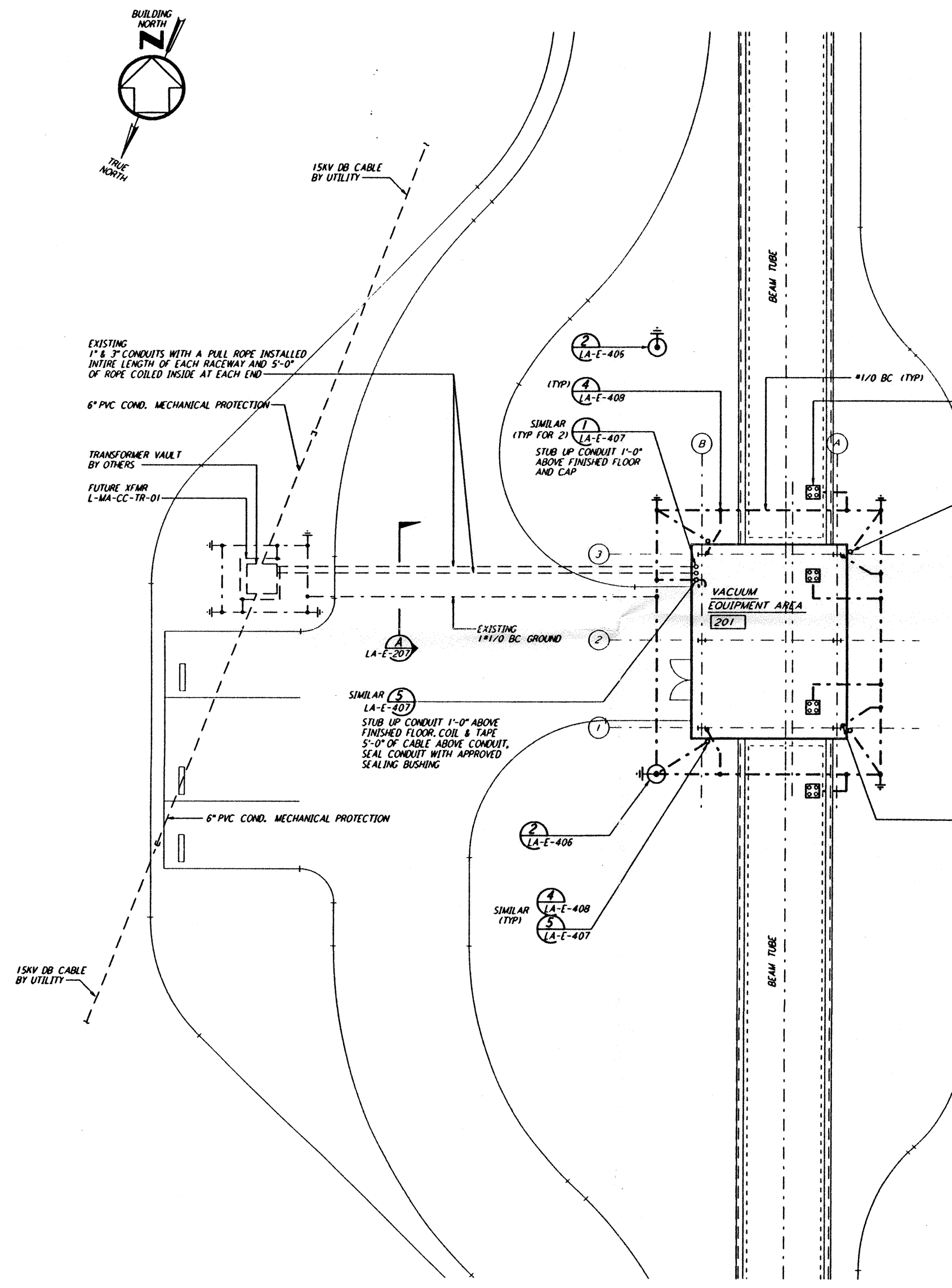


NOTES:

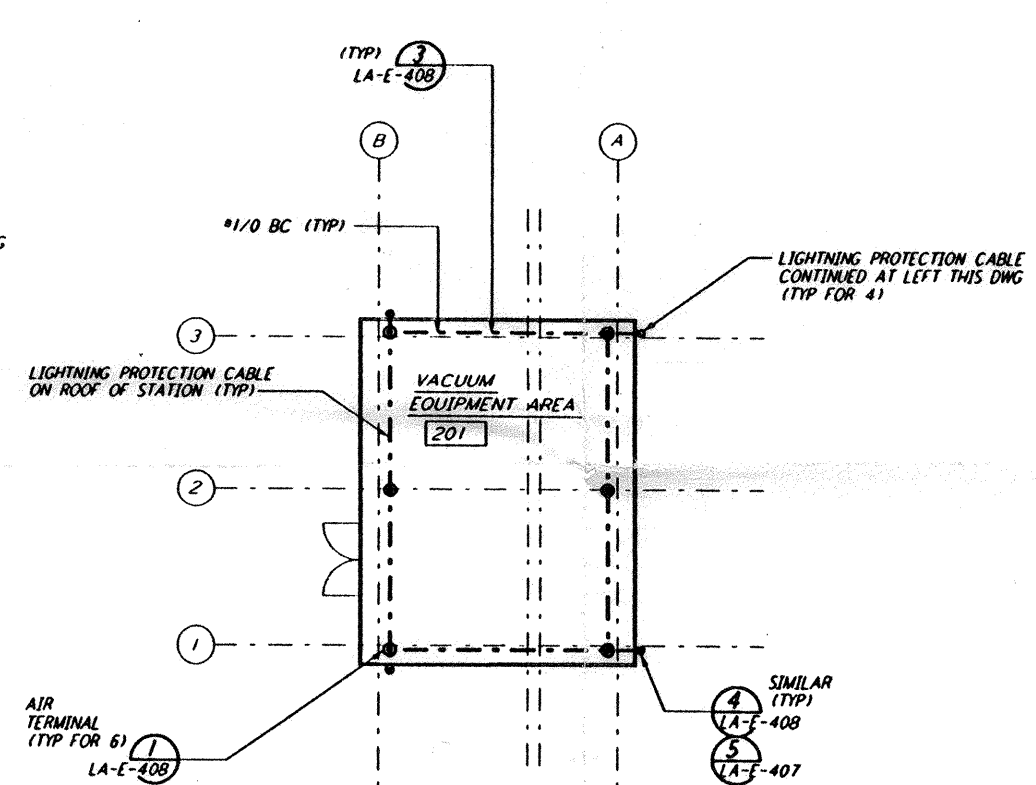
1. FOR GENERAL NOTES SEE DWG. LA-E-103.
2. CONNECT GROUNDING CONDUCTOR TO REBAR AT BOTTOM OF FOUNDATION. REBAR SHALL BE AT LEAST 20 FEET LONG AND 1/2" DIAMETER.
3. SEE CIVIL DRAWING LA-C-021 FOR ACTUAL LOCATION OF TRANSFORMER.
4. SEE SPECIFICATION SECTION 16670 FOR LIGHTNING PROTECTION MATERIAL.
5. GROUND CONNECTION TO STRUCTURAL STEEL SHALL BE EXOTHERMIC WELD TYPE, AND APPROPRIATE FOR THE CABLE AND STRUCTURAL STEEL.



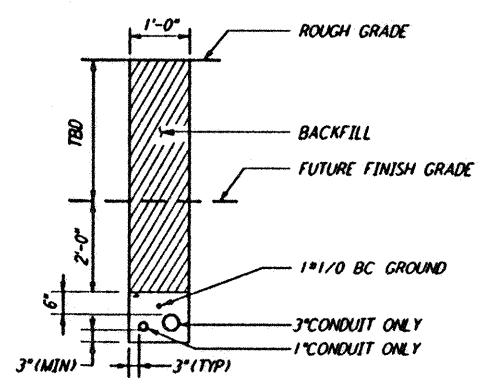
This document and the design it covers are the property of PARSONS. They are loaned only with the borrower's expressed written agreement that they will not be reproduced, copied, loaned, exhibited, or used in any other way, except by written consent from PARSONS to the borrower.



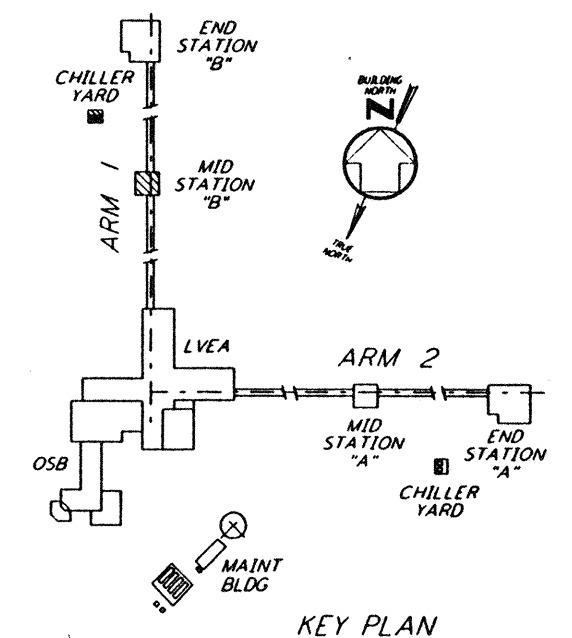
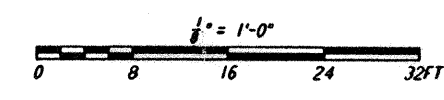
GROUNDING & UNDERGROUND PLAN



LIGHTNING PROTECTION PLAN



SECTION NTS EXISTING DUCTBANK



KEY PLAN

NO.	DATE	BY	CHKD	ENGR	PROJ	DESCRIPTION
B	7-24-96	MM	JCL		TDM	ISSUED FOR BID
A	6-14-96	MM	JCL	KR	TDM	FINAL DESIGN REVIEW

DRAWN	M. M.
CHECKED	
ENGINEER	
PROJ	

PARSONS
100 WEST WALNUT STREET
PASADENA, CALIFORNIA

LIGO
CALIFORNIA INSTITUTE OF TECHNOLOGY
MASSACHUSETTS INSTITUTE OF TECHNOLOGY

**LASER INTERFEROMETER
GRAVITATIONAL-WAVE OBSERVATORY
SITE NO. 2 - LIVINGSTON, LOUISIANA**

TITLE	SCALE	CONTRACT NUMBER	PROJECT NUMBER
ELECTRICAL MID STATION B GROUNDING & UNDERGROUND PLAN	AS NOTED	PP150969	8094
SHEET NUMBER			REVISIONS
LA-E-217			

LIGO-D961036-B-O

LIG00AF 3.B0F

Tue Jul 23 21:05:30 1996 S3-V18B2 J:\PLOTS\QUEUES\V18B2\EE217.PR