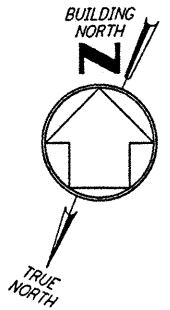


**NOTES:**

1. FOR GENERAL NOTES SEE DWG. LA-E-103.
2. CONNECT GROUNDING CONDUCTOR TO REBAR AT BOTTOM OF FOUNDATION. REBAR SHALL BE AT LEAST 20 FEET LONG AND 1/2" DIAMETER.
3. SEE CIVIL DRAWING LA-C-021 FOR ACTUAL LOCATION OF TRANSFORMER.
4. SEE SPECIFICATION SECTION 16670 FOR LIGHTNING PROTECTION MATERIAL.
5. GROUND CONNECTION TO STRUCTURAL STEEL SHALL BE EXOTHERMIC WELD TYPE, AND APPROPRIATE FOR THE CABLE AND STRUCTURAL STEEL.



EXISTING 1" & 3" CONDUITS WITH A PULL ROPE INSTALLED INTIRE LENGTH OF EACH RACEWAY AND 5'-0" OF ROPE COILED INSIDE AT EACH END

6" PVC COND. MECHANICAL PROTECTION

TRANSFORMER VAULT BY OTHERS  
 FUTURE XFMR L-MA-CC-TR-01

6" PVC COND. MECHANICAL PROTECTION

SIMILAR (5) LA-E-407  
 STUB UP CONDUIT 1'-0" ABOVE FINISHED FLOOR. COIL & TAPE 5'-0" OF CABLE ABOVE CONDUIT. SEAL CONDUIT WITH APPROVED SEALING BUSHING

(2) LA-E-406  
 (4) LA-E-408 (TYP)  
 (1) LA-E-407 (TYP FOR 2)  
 STUB UP CONDUIT 1'-0" ABOVE FINISHED FLOOR AND CAP

(4) LA-E-408 (TYP)  
 (5) LA-E-407 (TYP)

EXISTING 1 1/2" BC GROUND

(5) LA-E-405 (TYP FOR 4)

(5) LA-E-407  
 (4) LA-E-406 (TYP FOR 4)

(3) LA-E-408 (TYP)

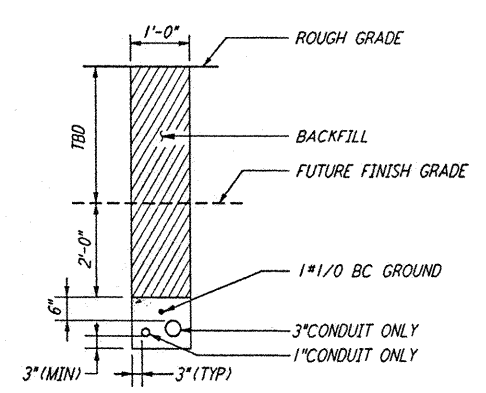
(4) LA-E-408 (TYP)  
 (5) LA-E-407 (TYP)

LIGHTNING PROTECTION CABLE CONTINUED AT RIGHT THIS DWG (TYP FOR 4)

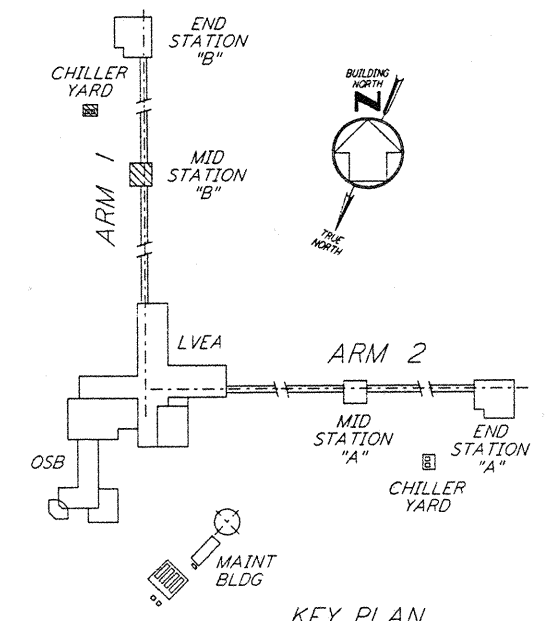
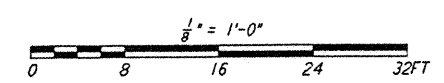
LIGHTNING PROTECTION CABLE CONTINUED AT LEFT THIS DWG (TYP FOR 4)

LIGHTNING PROTECTION CABLE ON ROOF OF STATION (TYP)

**LIGHTNING PROTECTION PLAN**



SECTION A-A REF  
 NTS EXISTING DUCTBANK LA-E-207



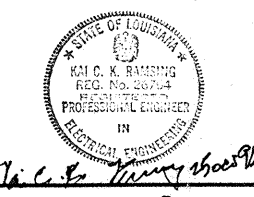
KEY PLAN

**GROUNDING & UNDERGROUND PLAN**

This document and the design it covers are the property of PARSONS. They are loaned only with the borrower's expressed written agreement that they will not be reproduced, copied, loaned, exhibited, or used in any other way, except by written consent from PARSONS to the borrower.

DRAWING NO.	DESCRIPTION	NO.	DATE	BY	CHKD	ENGR	PROJ	DESCRIPTION

ISSUED FOR CONSTRUCTION	
DRAWN	M. M. 11-15-96
CHECKED	JCL 7-24-96
ENGINEER	RCB 10-15-96
PROJ	EBR 11/17/96



**PARSONS**  
 100 WEST WALNUT STREET  
 PASADENA, CALIFORNIA

**LIGO**  
 CALIFORNIA INSTITUTE OF TECHNOLOGY  
 MASSACHUSETTS INSTITUTE OF TECHNOLOGY

LASER INTERFEROMETER  
 GRAVITATIONAL-WAVE OBSERVATORY  
 SITE NO. 2 - LIVINGSTON, LOUISIANA

TITLE	ELECTRICAL MID STATION B GROUNDING & UNDERGROUND PLAN	SCALE	AS NOTED	CONTRACT NUMBER	PP150969	PROJECT NUMBER	8094
SHEET NUMBER	LA-E-217	REVISIONS					