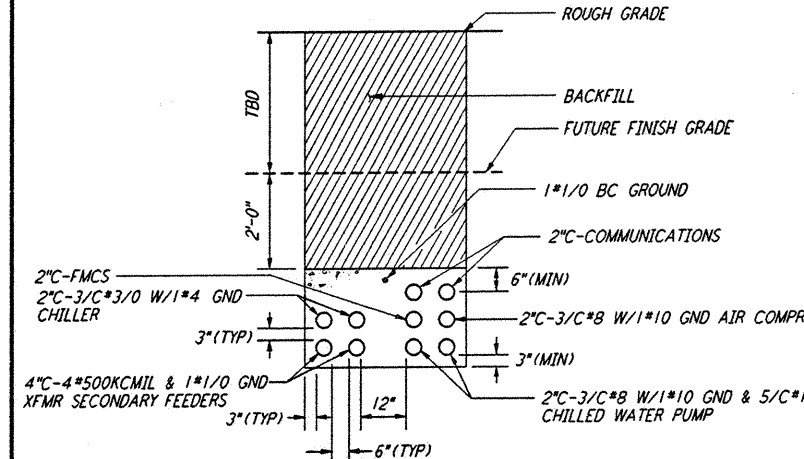
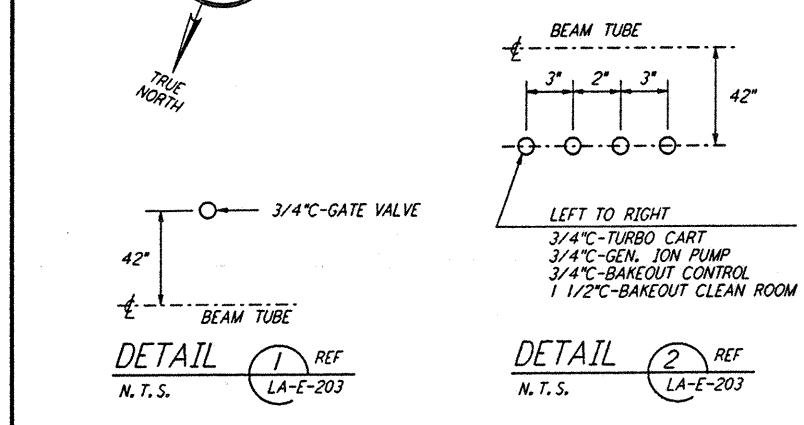
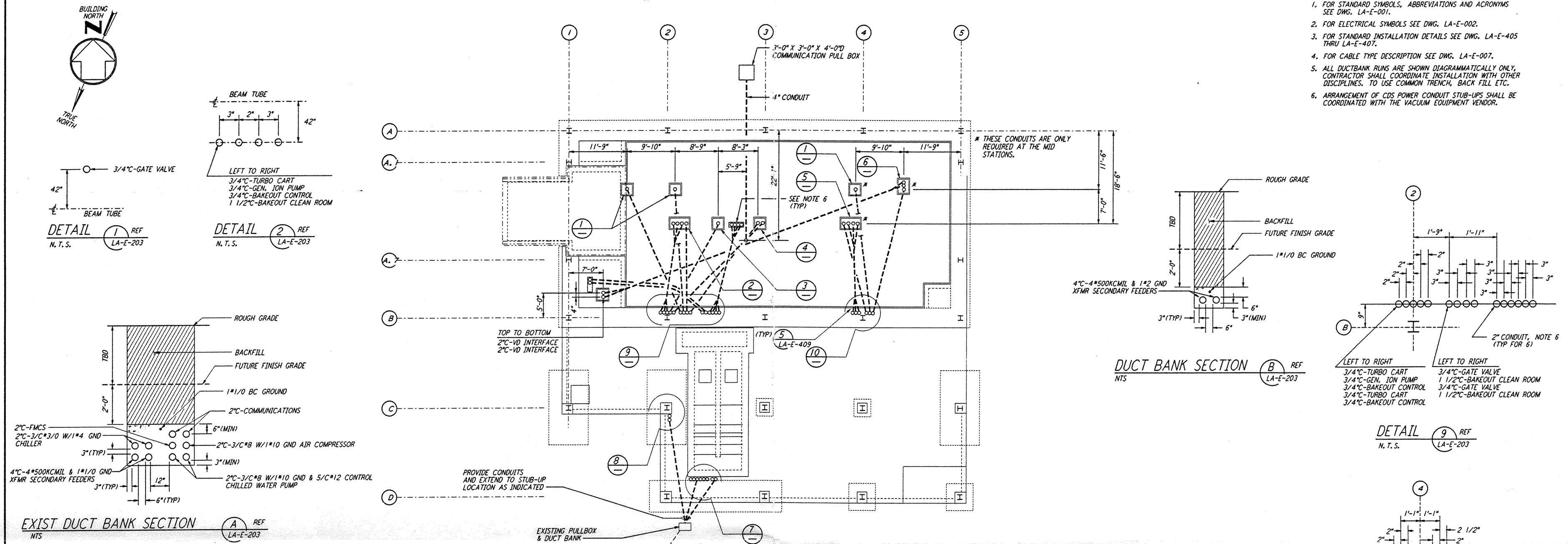


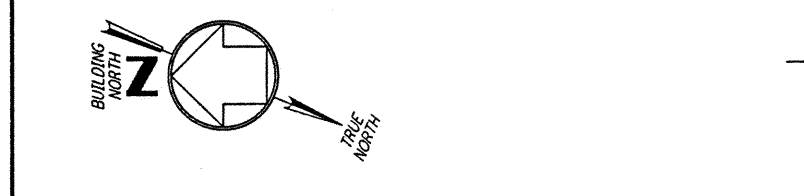
not be reproduced, copied, loaned, exhibited, or used in any other way, except by written consent from PARSONS to the borrower.

This document and the design it covers are the property of PARSONS. They are loaned only with the borrower's expressed written agreement that they will

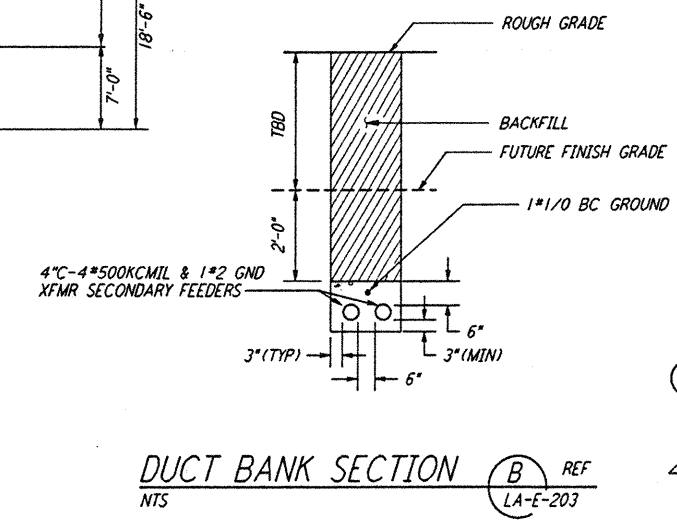
- NOTES:**
- FOR STANDARD SYMBOLS, ABBREVIATIONS AND ACRONYMS SEE DWG. LA-E-001.
 - FOR ELECTRICAL SYMBOLS SEE DWG. LA-E-002.
 - FOR STANDARD INSTALLATION DETAILS SEE DWG. LA-E-405 THRU LA-E-407.
 - FOR CABLE TYPE DESCRIPTION SEE DWG. LA-E-007.
 - ALL DUCTBANK RUNS ARE SHOWN DIAGRAMMATICALLY ONLY. CONTRACTOR SHALL COORDINATE INSTALLATION WITH OTHER DISCIPLINES. TO USE COMMON TRENCH, BACK FILL ETC.
 - ARRANGEMENT OF CDS POWER CONDUIT STUB-UPS SHALL BE COORDINATED WITH THE VACUUM EQUIPMENT VENDOR.



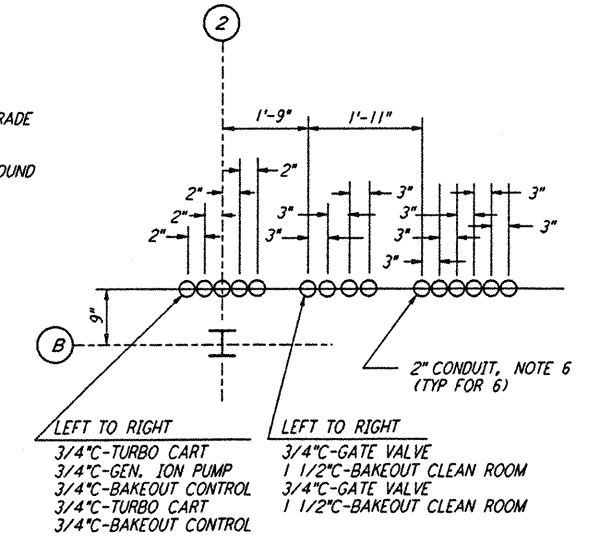
EXIST DUCT BANK SECTION (A) REF LA-E-203
 N.T.S.



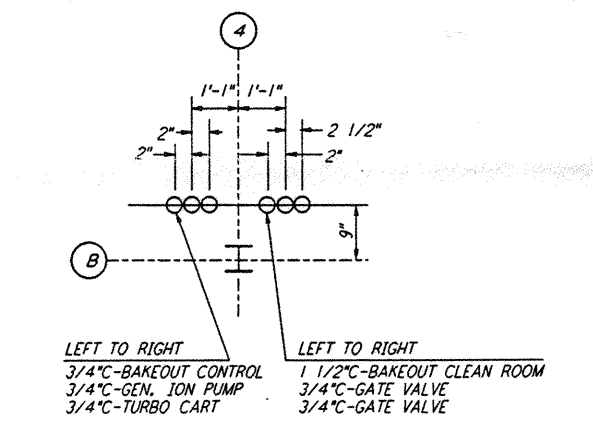
UNDERGROUND CHILLER PLAN



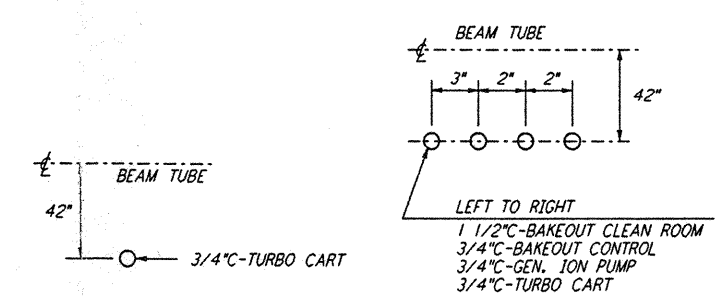
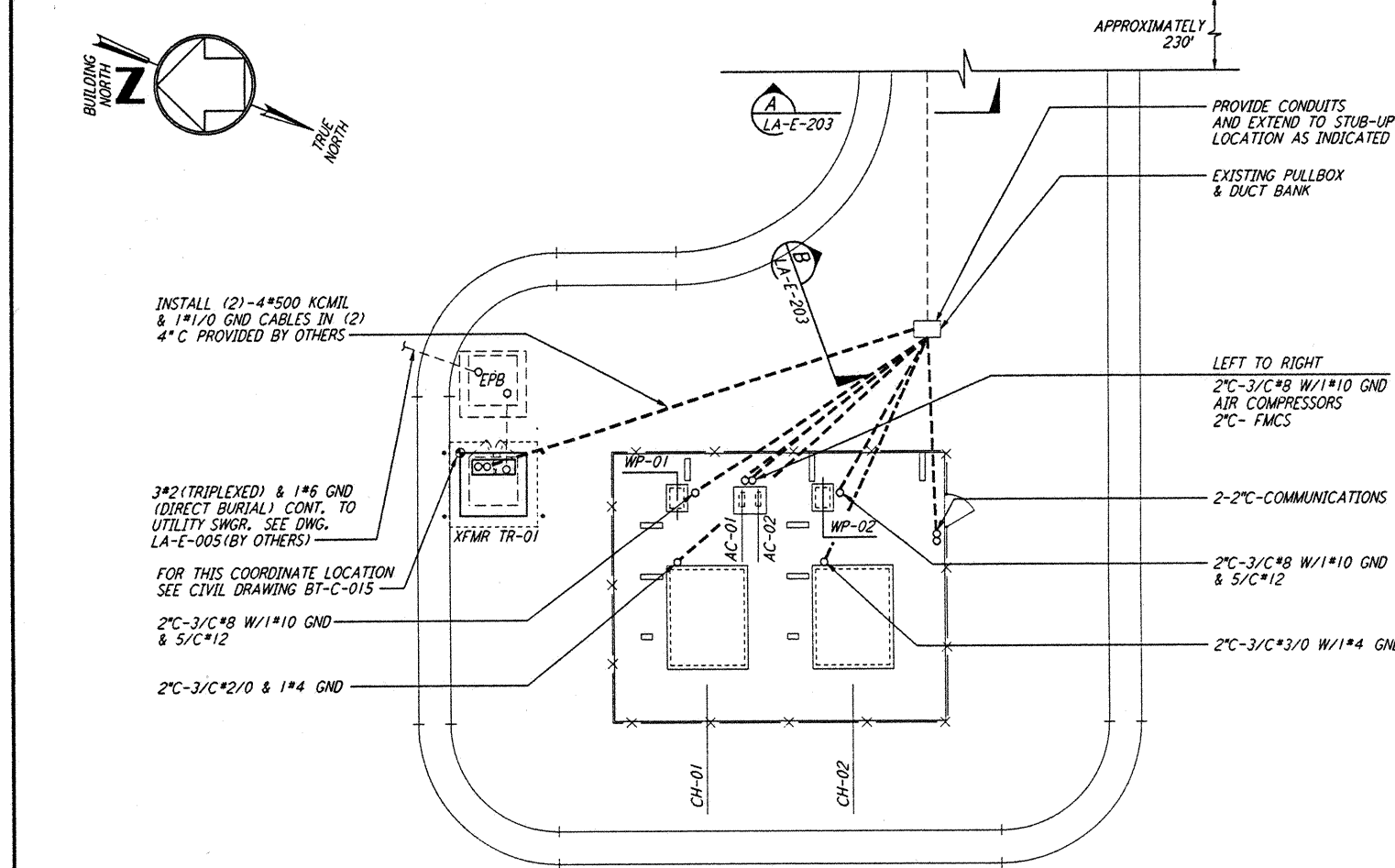
DUCT BANK SECTION (B) REF LA-E-203
 N.T.S.



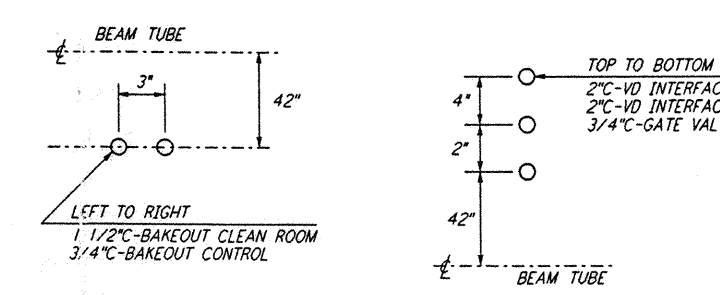
DETAIL (9) REF LA-E-203
 N.T.S.



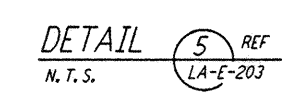
DETAIL (10) REF LA-E-203
 N.T.S.



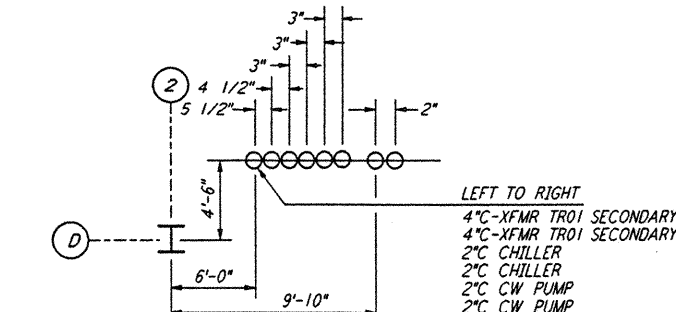
DETAIL (3) REF LA-E-203
 N.T.S.



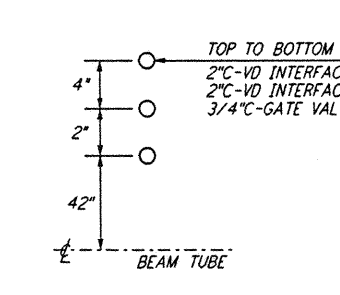
DETAIL (4) REF LA-E-203
 N.T.S.



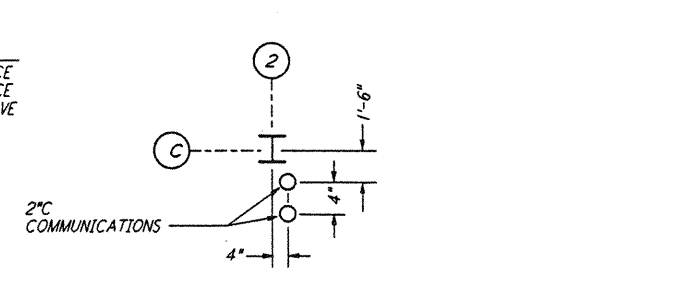
DETAIL (5) REF LA-E-203
 N.T.S.



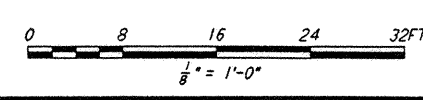
DETAIL (7) REF LA-E-203
 N.T.S.



DETAIL (6) REF LA-E-203
 N.T.S.



DETAIL (8) REF LA-E-203
 N.T.S.



LIGO-D961027-B-O

KEY PLAN

NO.	DATE	BY	CHKD	ENGR	PROJ	DESCRIPTION
B	6-14-96	JCL	JCL	JCL	TOM	FINAL DESIGN REVIEW
A	10-31-95	JCL	JCL	JCL	TOM	PRELIMINARY DESIGN REVIEW

DRAWN	M. M.
CHECKED	
ENGINEER	
PROJ	

PARSONS

100 WEST WALNUT STREET
 PASADENA, CALIFORNIA

LIGO

CALIFORNIA INSTITUTE OF TECHNOLOGY
 MASSACHUSETTS INSTITUTE OF TECHNOLOGY

LASER INTERFEROMETER
 GRAVITATIONAL-WAVE OBSERVATORY
 SITE NO. 2 - LIVINGSTON, LOUISIANA

TITLE	ELECTRICAL END STATION A UNDERGROUND PLAN	SCALE	AS NOTED	CONTRACT NUMBER	PP150969	PROJECT NUMBER	8094
SHEET NUMBER	LA-E-203	REVISIONS					