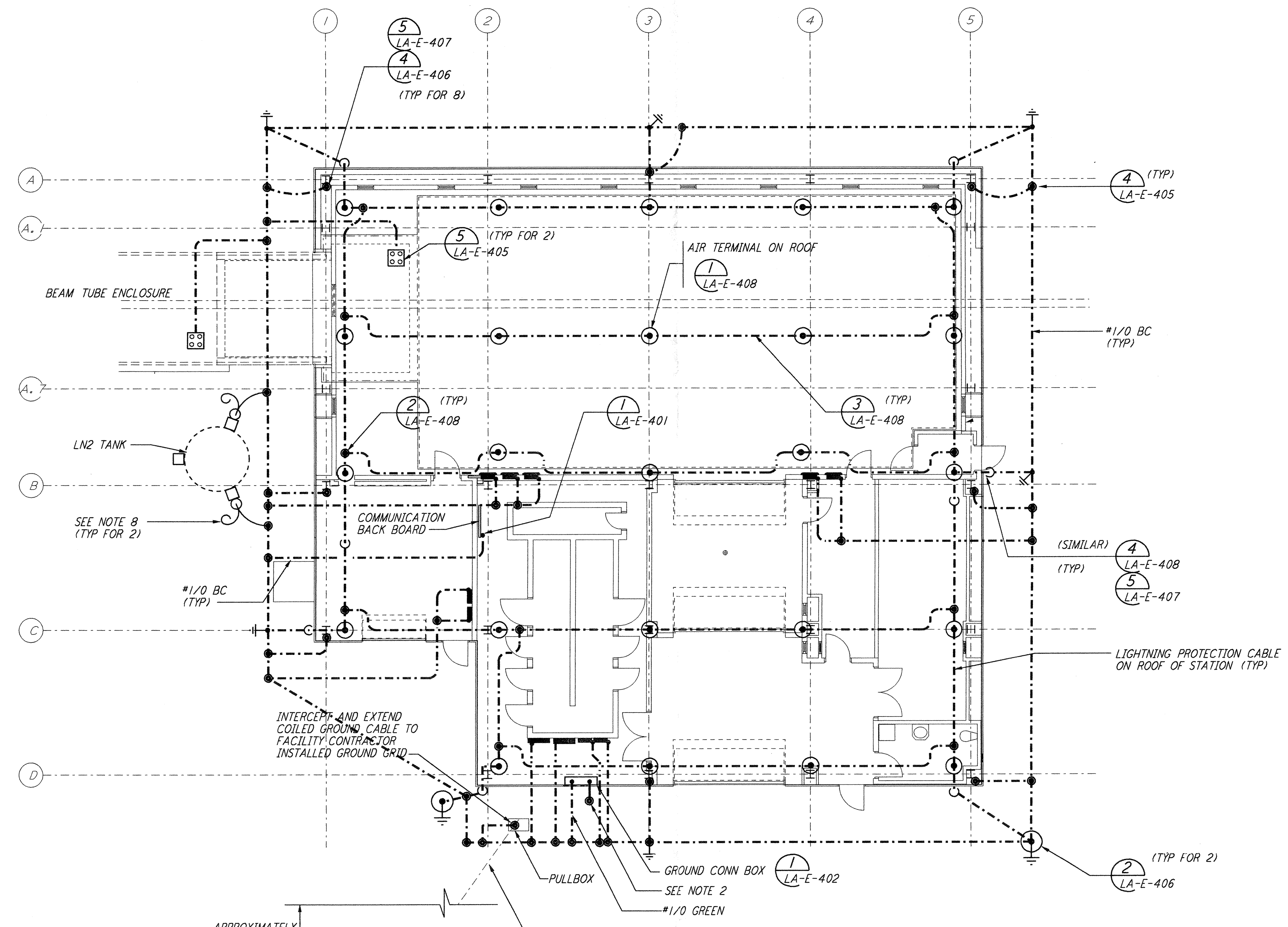
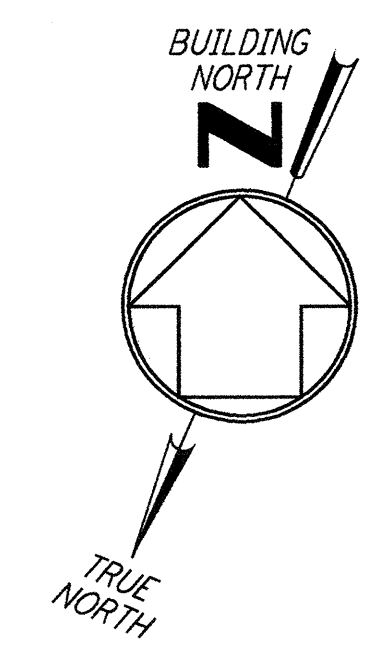
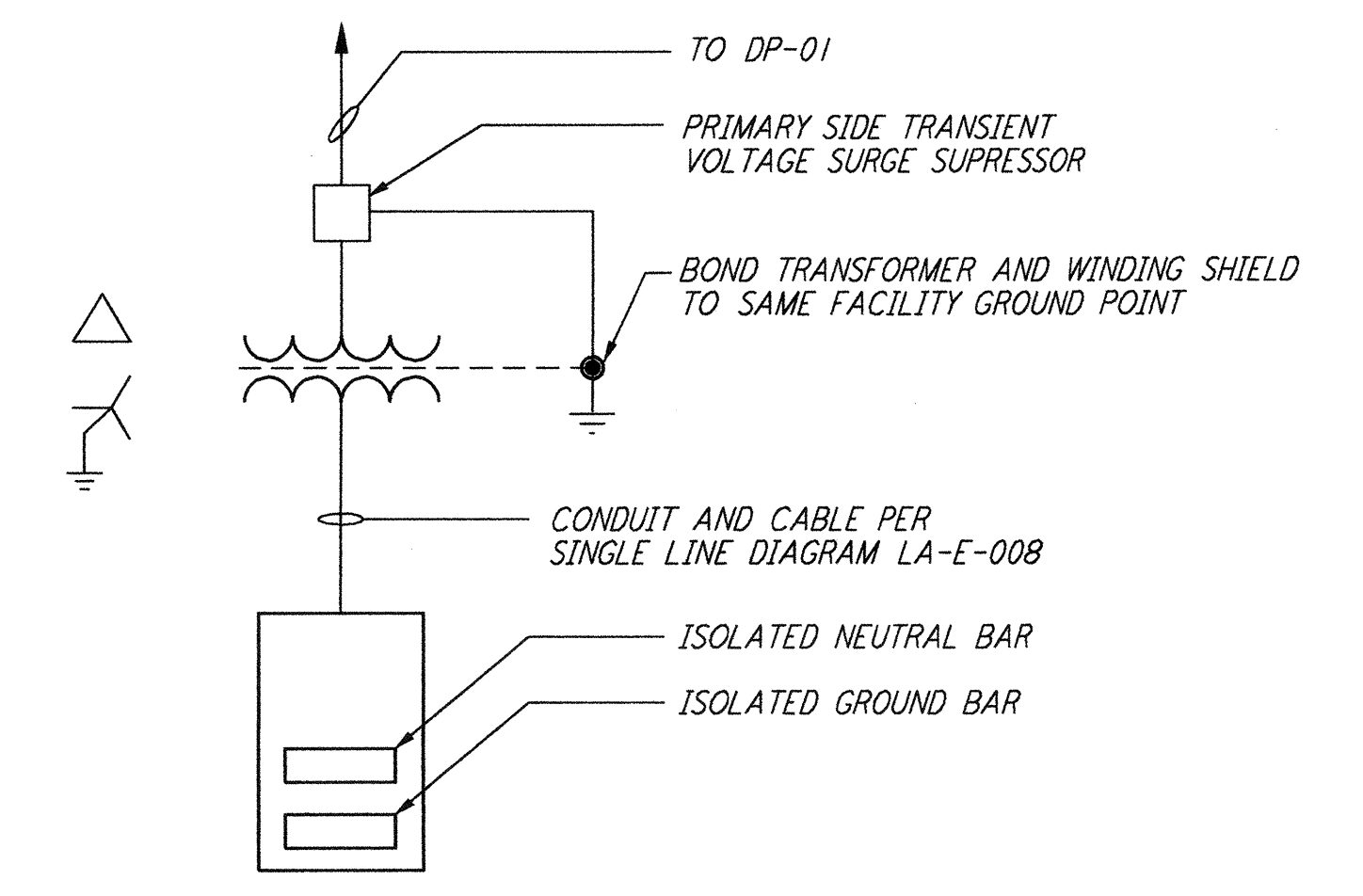


This document and the design it covers are the property of PARSONS. They are loaned only with the borrower's expressed written agreement that they will not be reproduced, copied, loaned, exhibited, or used in any other way, except by written consent from PARSONS to the borrower.

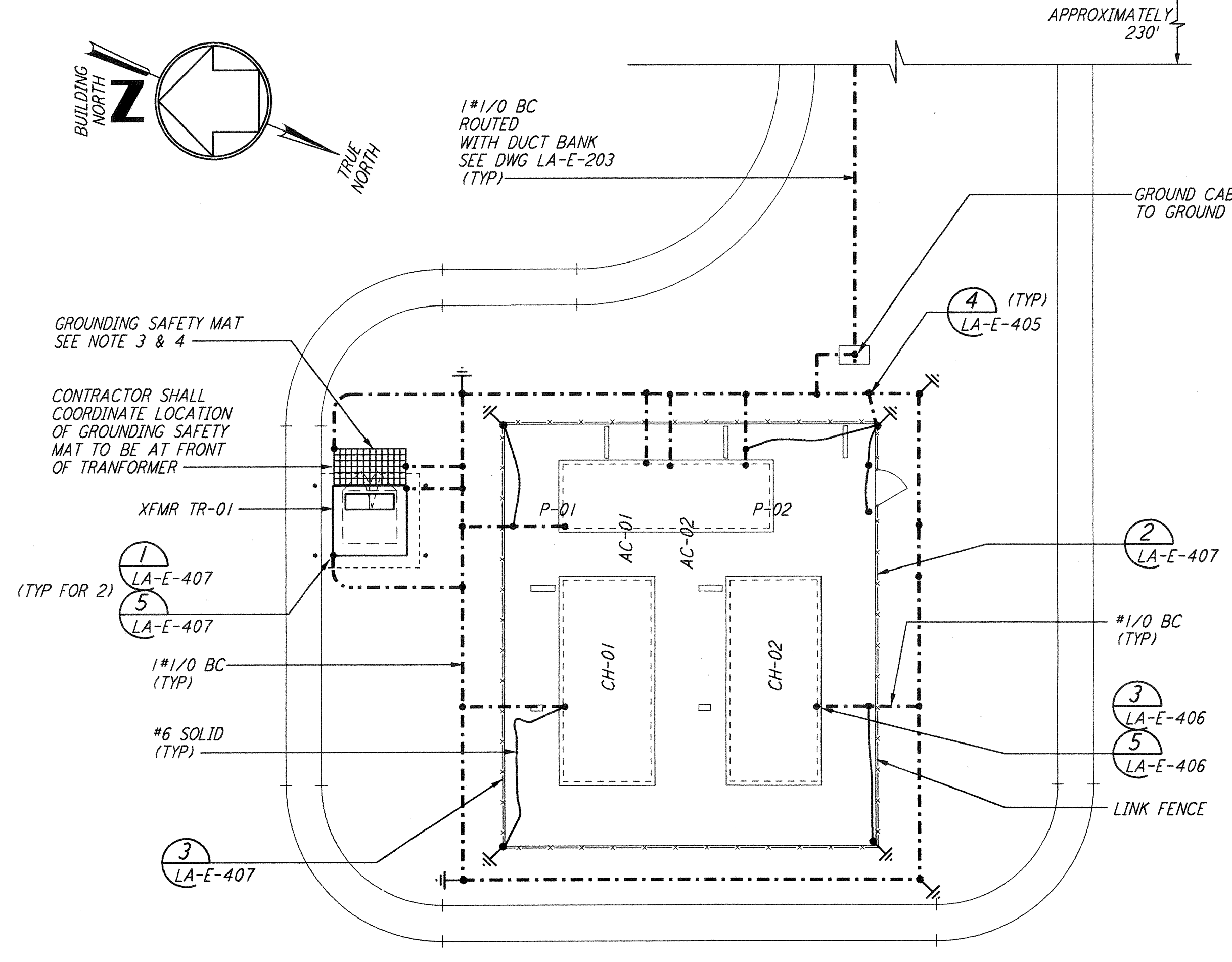
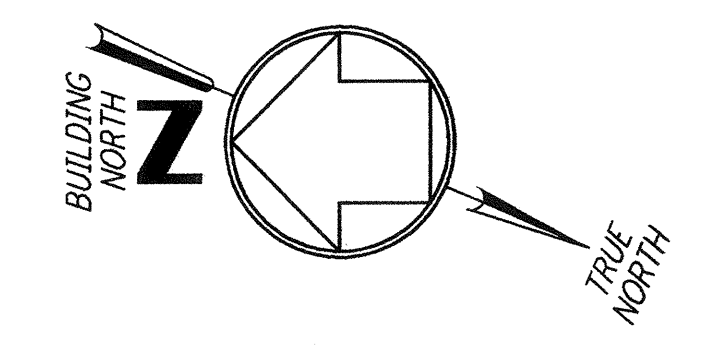


NOTES:

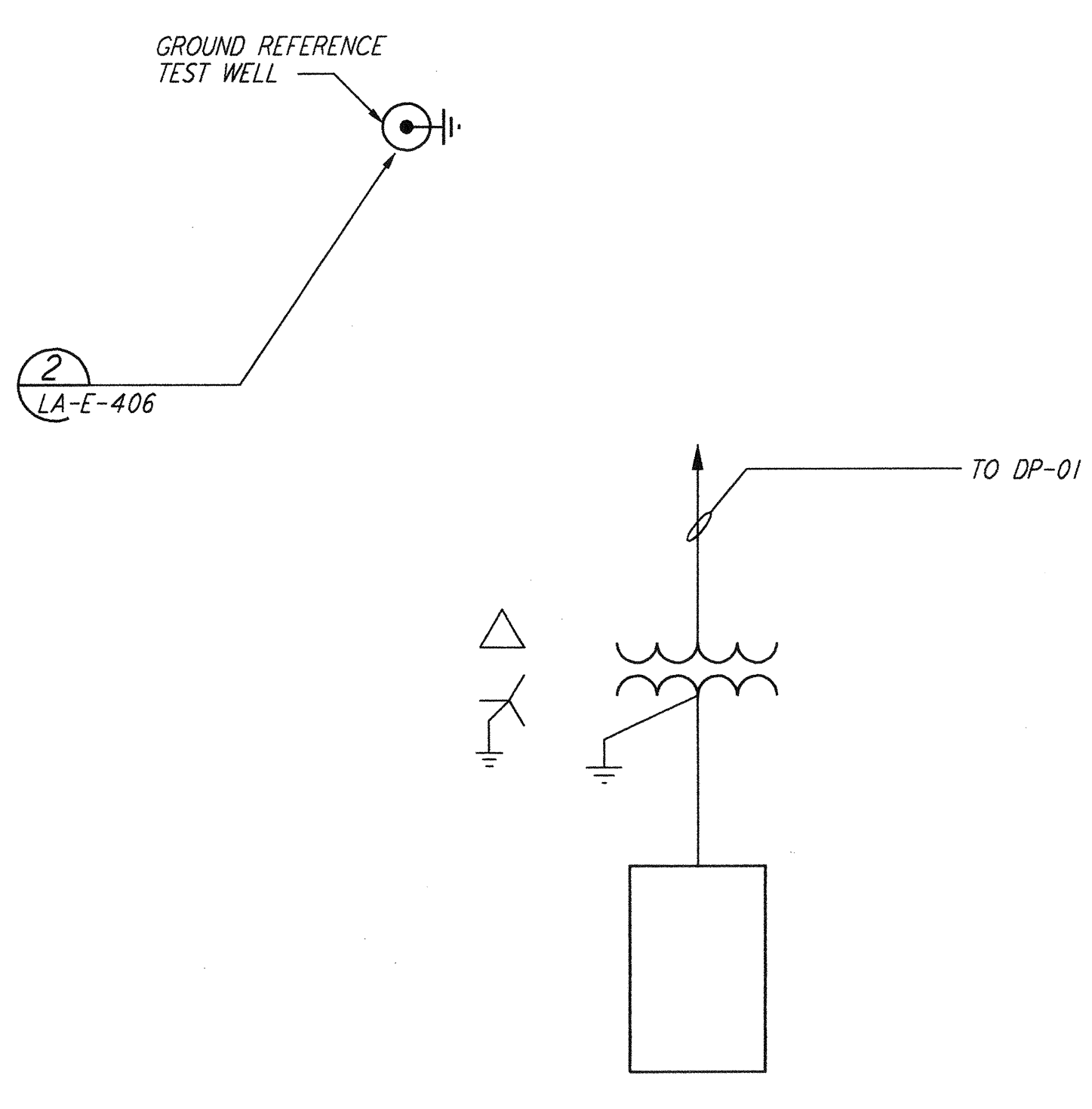
1. FOR GENERAL NOTES SEE DWG. LA-E-103.
2. CONNECT GROUNDING CONDUCTOR TO REBAR (BY OTHERS) AT BOTTOM OF FOUNDATION. REBAR SHALL BE AT LEAST 20 FEET LONG.
3. GROUNDING MAT FOR PERSONNEL PROTECTION SHALL BE A PREFABRICATED 4'-0" X 6'-0" MAT WITH A 6" X 6" GRID, 40X CONDUCTIVITY COPPERWELD, WITH CENTER WIRE # 1/0 AWG, ERICO MFR. CABLE TO MESH TYPE PT, MOLD PTC-1G2C, WELD METAL #65.
4. GROUNDING MAT SHALL BE INSTALLED 12" DEEP MIN. ADJACENT TO HIGH VOLTAGE PRIMARY SIDE.
5. SEE CIVIL DRAWING LA-C-021 FOR ACTUAL LOCATION OF CHILLERS, PUMPS AND TRANSFORMER.
6. SEE SPECIFICATION SECTION 16670 FOR LIGHTNING PROTECTION MATERIAL.
7. GROUND CONNECTION TO STRUCTURAL STEEL SHALL BE EXOTHERMIC WELD TYPE, AND APPROPRIATE FOR THE CABLE AND STRUCTURAL STEEL.
8. COIL AND TAPE GROUND CONDUCTOR AT TANK FOUNDATION, FOR FUTURE CONNECTION BY TANK VENDOR.



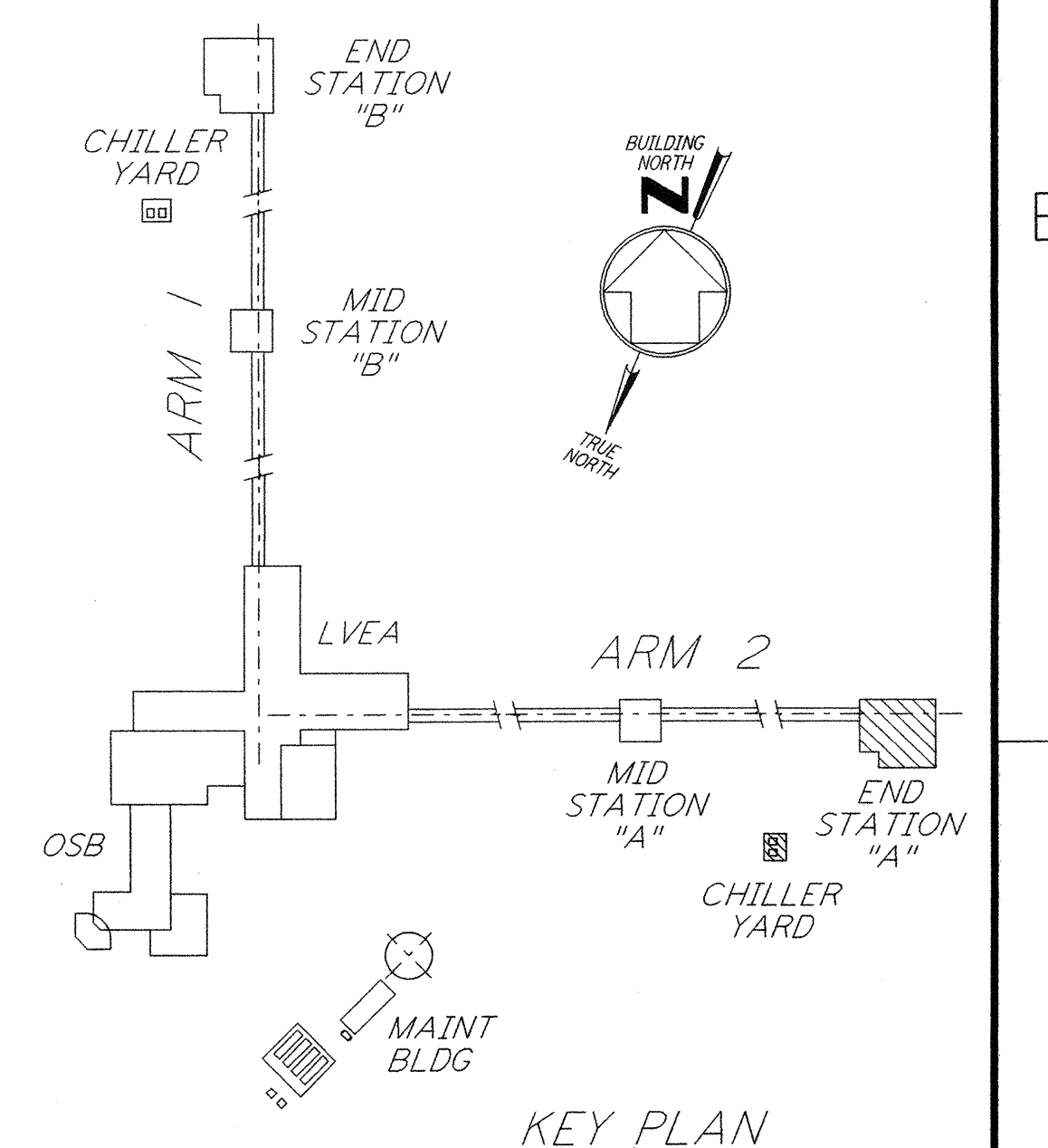
GROUNDING SCHEMATIC FOR CDSAC-01 PANEL



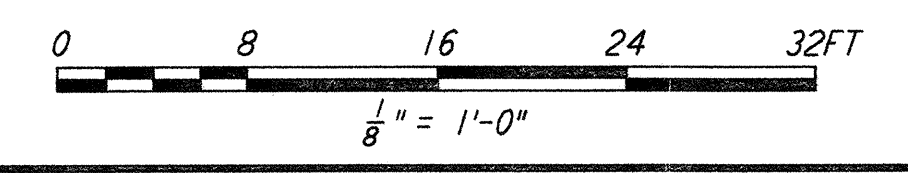
GROUNDING CHILLER PLAN



GROUNDING SCHEMATIC FOR RECEPTACLE PANEL RP-01



KEY PLAN



LIGO-D961026-02-0

NO.	DATE	BY	CHKD	ENGR	PROJ	DESCRIPTION
2	5-21-99	AO	AK	AG	MDW	ISSUED AS REVISED AS-BUILT
1	8-7-98	JE	AK	AG	MDW	ISSUED FOR AS-BUILT

ISSUED FOR CONSTRUCTION	M. M.	11-15-96
DRAWN	JCL	7-24-96
CHECKED	KCR	10-25-96
ENGINEER	T. D. M.	11-15-96
PROJ		

AS-BUILT DRAWINGS

PARSONS
 100 WEST WALNUT STREET
 PASADENA, CALIFORNIA

LIGO
 CALIFORNIA INSTITUTE OF TECHNOLOGY
 MASSACHUSETTS INSTITUTE OF TECHNOLOGY

LASER INTERFEROMETER
 GRAVITATIONAL-WAVE OBSERVATORY
 SITE NO. 2 - LIVINGSTON, LOUISIANA

TITLE	SCALE	CONTRACT NUMBER	PROJECT NUMBER
ELECTRICAL END STATION A LIGHTNING & GROUNDING PLAN	AS NOTED	PP150969	8094
SHEET NUMBER	REVISIONS		
LA-E-202			