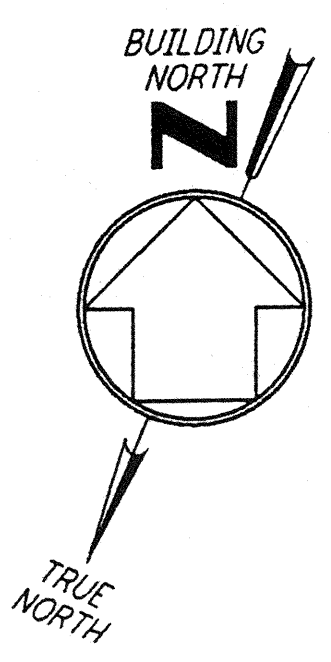
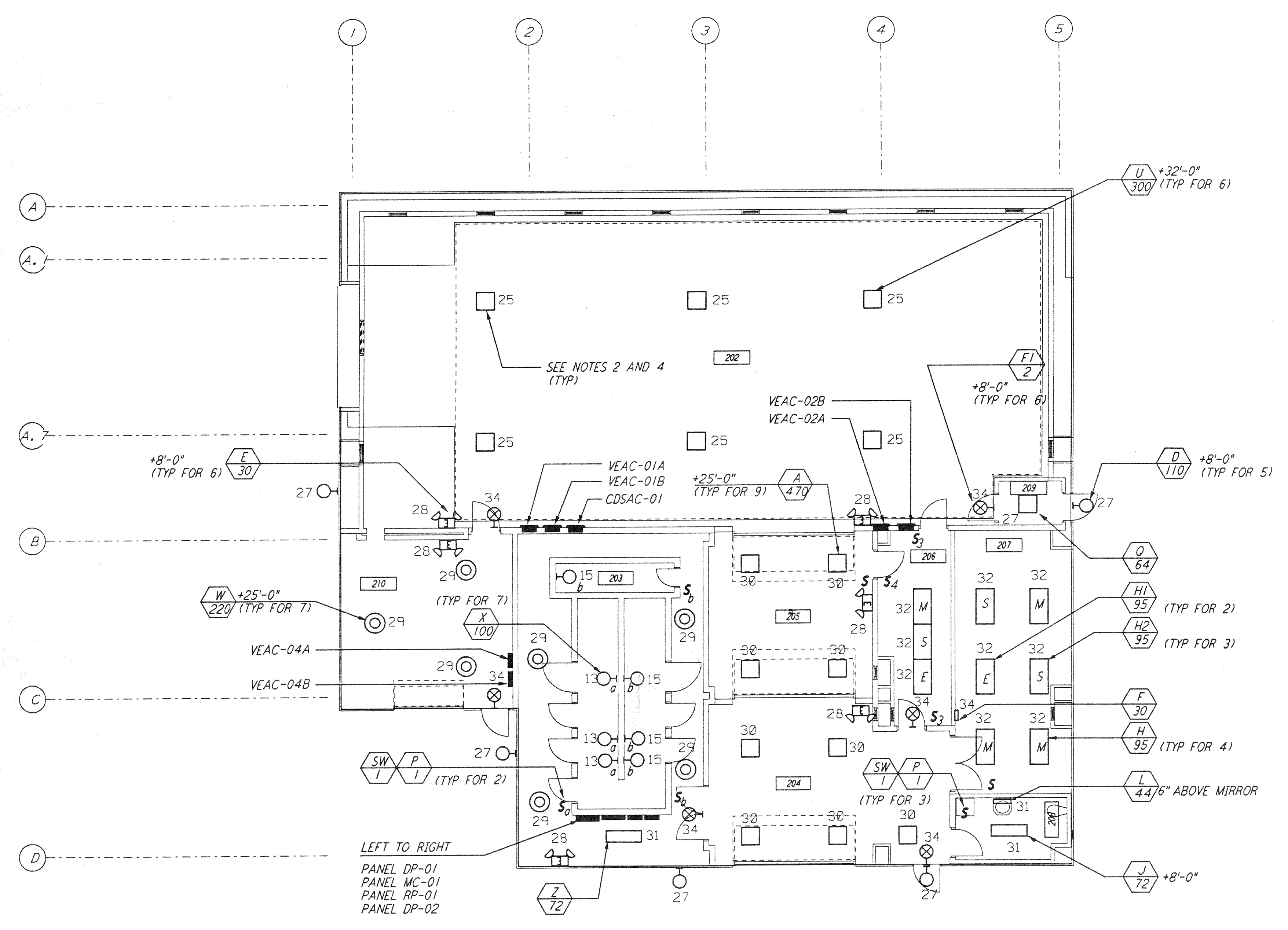


**NOTES:**

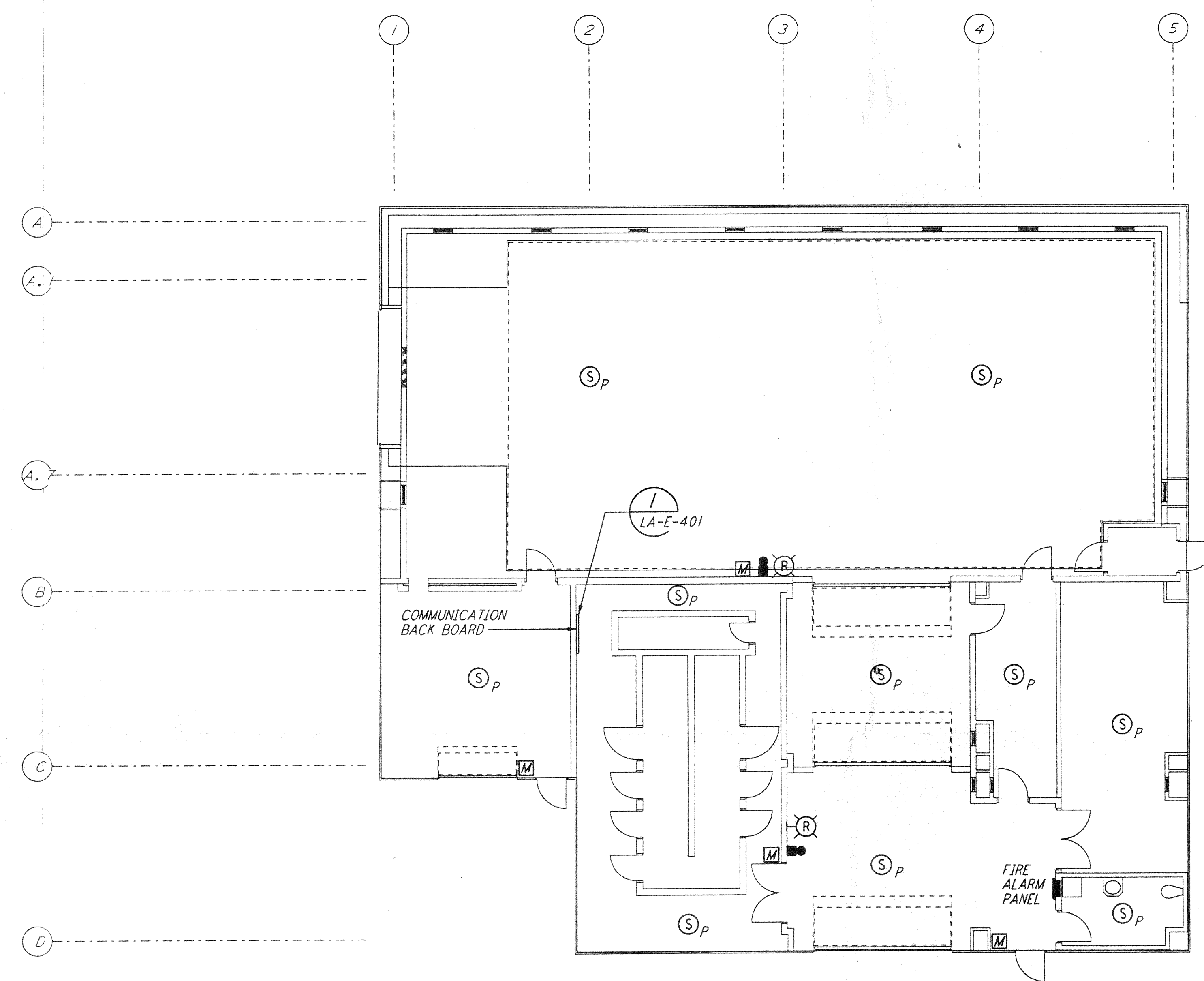
1. FOR GENERAL NOTES SEE DRAWINGS LA-E-102.
2. ALL CIRCUITS SHOWN ON THIS DRAWING ARE FROM PANEL DP-02 UNLESS OTHERWISE NOTED.
3. FOR PANEL SCHEDULES SEE DRAWING LA-E-205 AND LA-E-206.
4. FOR FIXTURE LOCATION SEE ARCHITECTURAL REFLECTED CEILING PLAN ON DRAWING LA-A-221.
5. FOR FIRE DETECTION NOTES SEE DRAWING LA-E-110.
6. ALL LIGHTING CIRCUITS SHALL HAVE HOME RUN TO PANEL DP-02 EXCEPT CIRCUITS #13 & #15 SHALL HOME RUN TO PANEL RP-01.



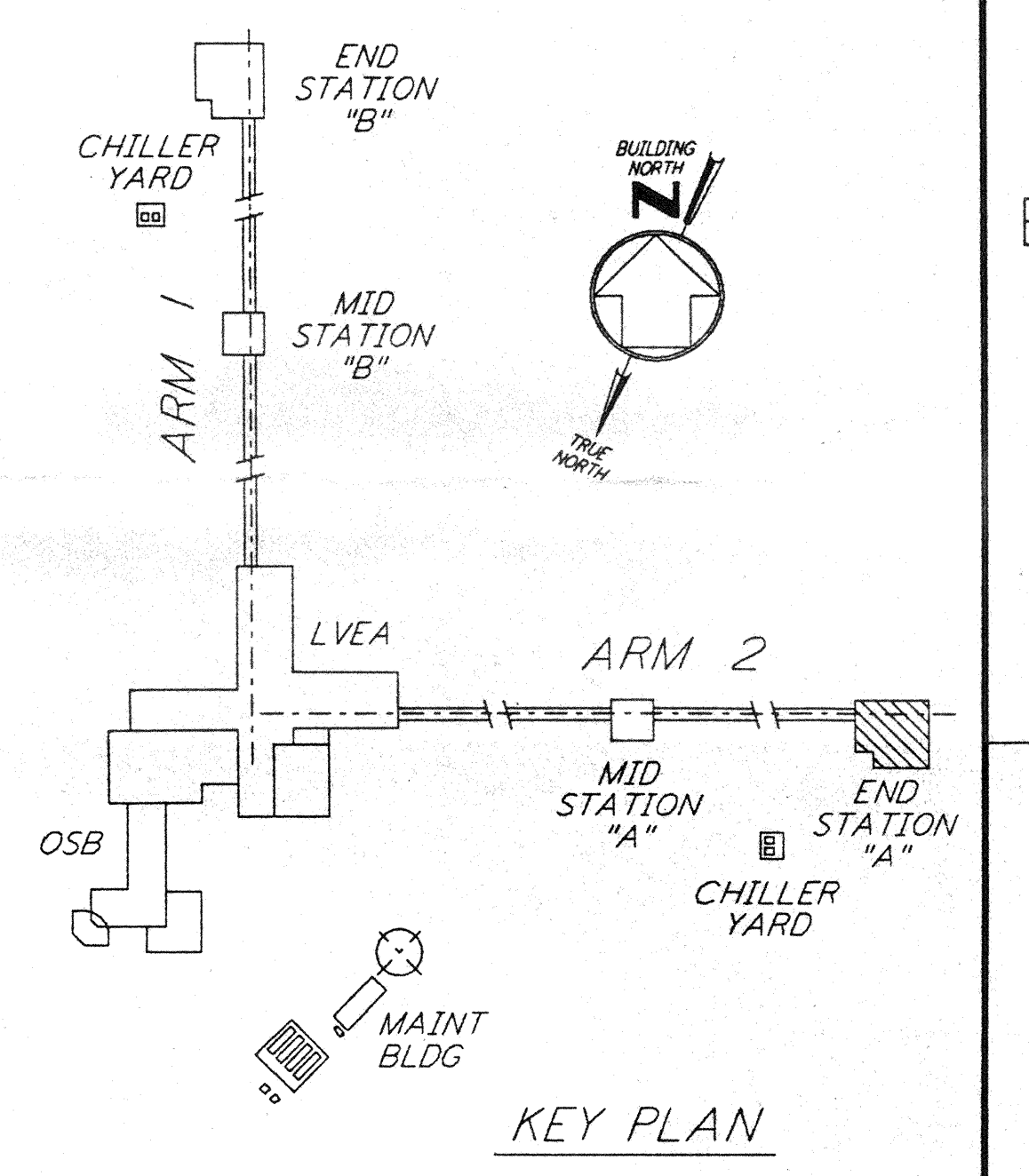
This document and the design it covers are the property of PARSONS. They are loaned only with the borrower's expressed written agreement that they will not be reproduced, copied, loaned, exhibited, or used in any other way, except by written consent from PARSONS to the borrower.



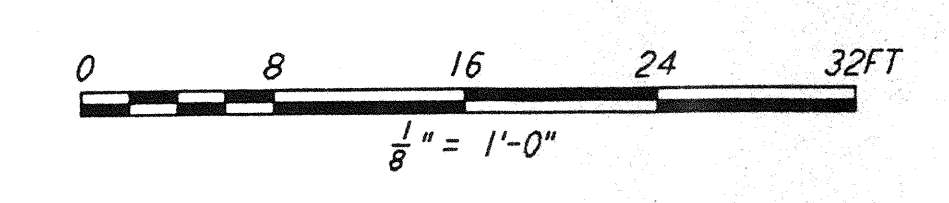
**LIGHTING PLAN**  
SEE NOTE 6



**COMMUNICATIONS AND FIRE DETECTION PLAN**



**KEY PLAN**



NO.	DATE	BY	CHKD	ENGR	PROJ	DESCRIPTION

ISSUED FOR CONSTRUCTION	
DRAWN	M. M. 11-15-96
CHECKED	JCL 7-24-96
ENGINEER	KCB 10-25-96
PROJ	EBP 11/15/96



**PARSONS**  
 100 WEST WALNUT STREET  
 PASADENA, CALIFORNIA

**LIGO**  
 CALIFORNIA INSTITUTE OF TECHNOLOGY  
 MASSACHUSETTS INSTITUTE OF TECHNOLOGY

LASER INTERFEROMETER  
 GRAVITATIONAL-WAVE OBSERVATORY  
 SITE NO. 2 - LIVINGSTON, LOUISIANA

TITLE	SCALE	CONTRACT NUMBER	PROJECT NUMBER
ELECTRICAL END STATION A LIGHTING, COMMUNICATIONS & FIRE DETECTION PLAN	AS NOTED	PP150969	8094
DRAWING NO.	SHEET NUMBER	REVISIONS	
	<b>LA-E-201</b>		

L160-0961025-00-0