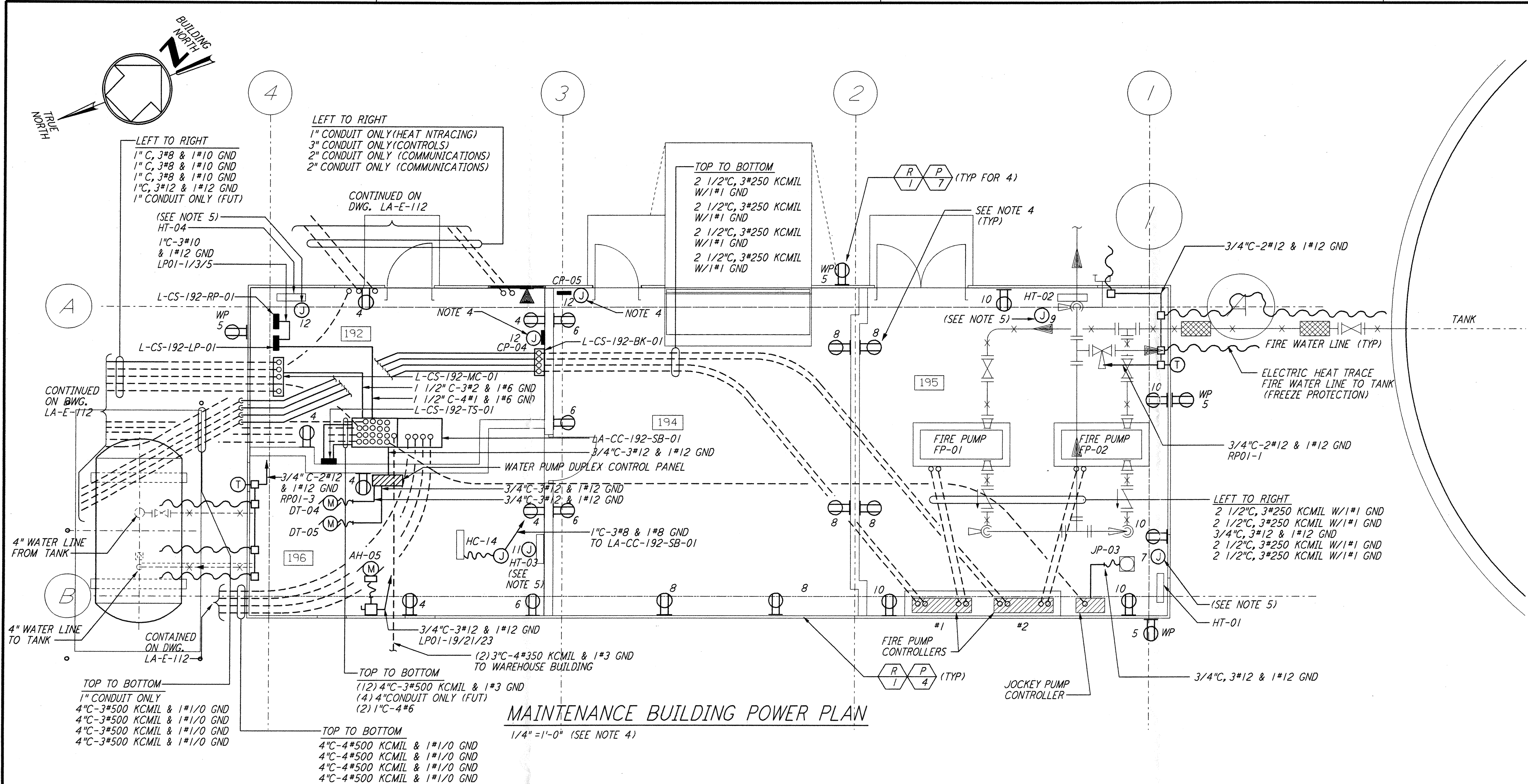
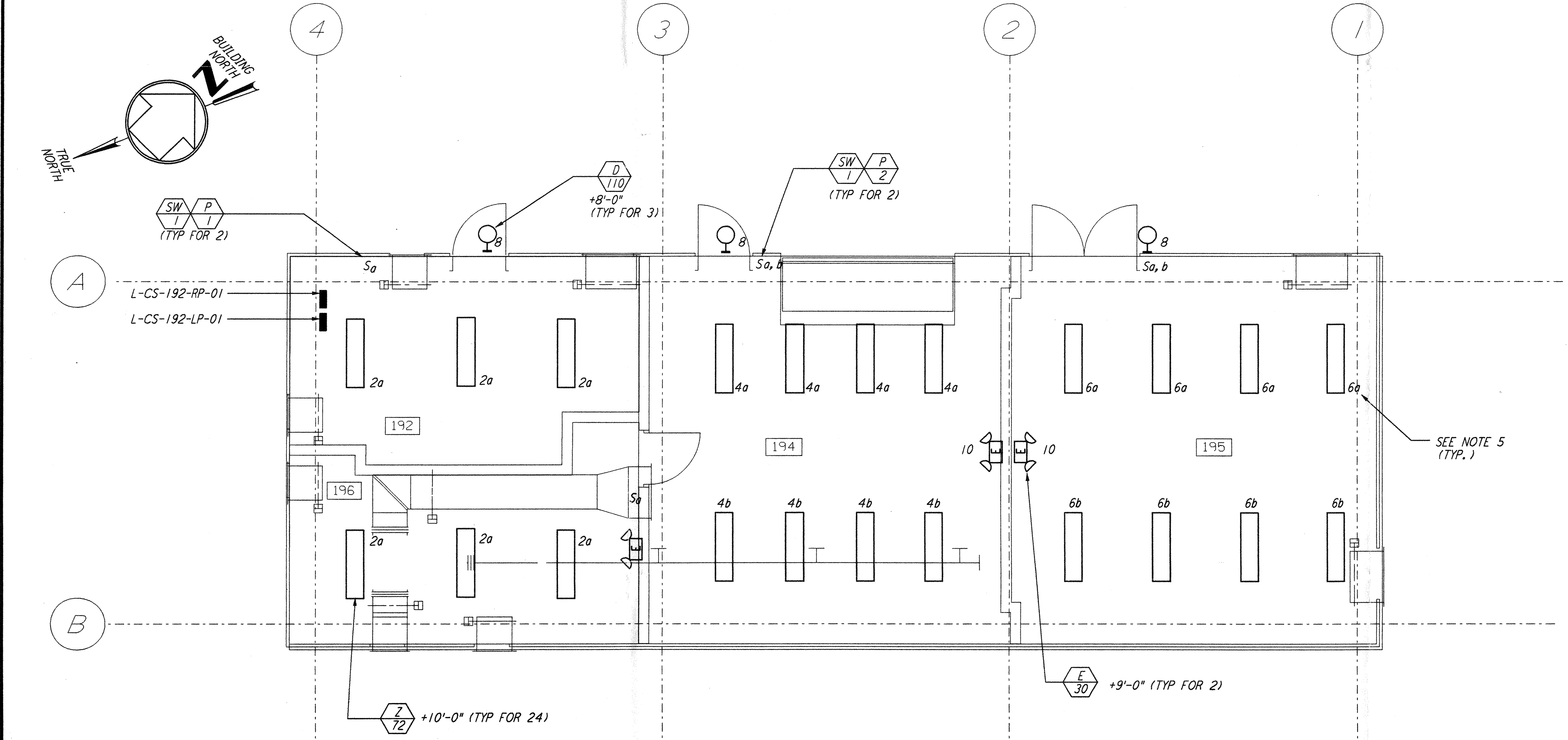


This document and the design it covers are the property of PARSONS. They are loaned only with the borrower's expressed written agreement that they will not be reproduced, copied, loaned, exhibited, or used in any other way, except by written consent from PARSONS to the borrower.



MAINTENANCE BUILDING POWER PLAN
 1/4"=1'-0" (SEE NOTE 4)

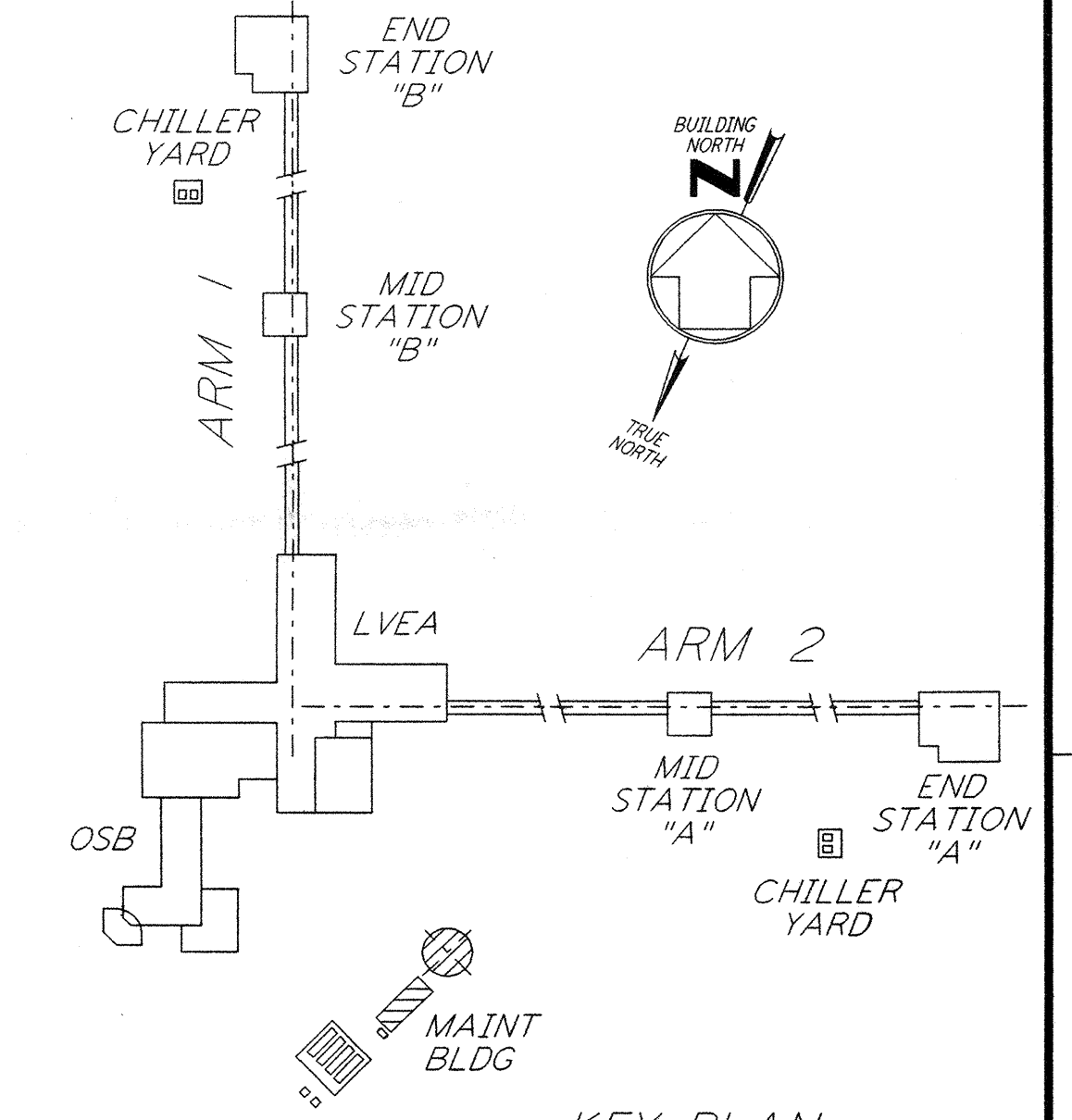


MAINTENANCE BUILDING LIGHTING PLAN
 1/4"=1'-0" (SEE NOTE 3)

PANEL L-CS-192-RP-01		LOCATION TOP		MOUNTING SURFACE		VOLTS 208Y/120V								
FED FROM	CKT #	PHASE	WIRE	FEEDER	MAIN	BUS 100A								
L-CS-192-LP-01	1, 3, 5	3	3											
CKT	LOAD SERVED	SLOT	POLES	WIRE SIZE	BKR	VOLT AMPS	PHASE LOAD (VA)	VOLT AMPS	BKR	WIRE SIZE	POLES	SLOT	LOAD SERVED	CKT
1	F. W. HEAT TRACE (GFCI)	1	1	20	500	500	A B C	208	15	1	2	2	SPARE	2
3	P. W. HEAT TRACE (GFCI)	3	1	20	200	200		1080	20	1	4	4	RECEPTS RM 192, 196	4
5	RECEPTS OUTSIDE (GFCI)	5	1	20	720	720		720	20	1	6	6	RECEPTS RM 194	6
7	SPARE	7	2	20		1800		1080	20	1	8	8	RECEPTS RM 194, 195	8
9		9	-					900	20	1	10	10	RECEPTS RM 195	10
11	SPACE	11	-					200	15	1	12	12	HVAC CONTROLS CP04, CP05	12
							TOTAL	1580	2180	1640				
							TOTAL CONNECTED LOAD (VA)	5400						
							(AMPS)							

PANEL L-CS-192-LP-01		LOCATION TOP		MOUNTING SURFACE		VOLTS 480Y/277V								
FED FROM	CKT #	PHASE	WIRE	FEEDER	MAIN	LUGS								
L-CS-192-RP-01	TBD	3	4	4#1 & 1#6 GND	BUS	100A								
CKT	LOAD SERVED	SLOT	POLES	WIRE SIZE	BKR	VOLT AMPS	PHASE LOAD (VA)	VOLT AMPS	BKR	WIRE SIZE	POLES	SLOT	LOAD SERVED	CKT
1	L-CS-192-RP-01	1	3	30	15000	15000	288	208	15	1	2	2	LIGHTING RM 192, 196	2
3		3	-	-	-	5000	984	864	15	1	4	4	LIGHTING RM 194	4
5		5	-	-	-	5200	976	576	15	1	6	6	LIGHTING RM 195	6
7	HEATER L-CS-195-HT-01	7	1	15	1500	1500	330	330	15	1	8	8	LIGHTING OUTSIDE	8
9	HEATER L-CS-195-HT-02	9	1	15	1500	1500	60	60	15	1	10	10	EMERGENCY LIGHTING	10
11	HEATER L-CS-196-HT-03	11	1	15	1500	1500	60	60	15	1	12	12	HEATER L-CS-196-HT-04	12
13	SPARE	13	3	15					15	1	14	14	SPARE	14
15		15	-	-	-				15	1	16	16	SPARE	16
17		17	-	-	-				15	1	18	18	SPARE	18
19	L-CS-191-AH-05	19	3	20	1500	500						20	SPACE	20
21		21	-	-	-		500					22	SPACE	22
23		23	-	-	-		500					24	SPACE	24
							TOTAL	7618	7924	9076				
							TOTAL CONNECTED LOAD (VA)	24618						
							(AMPS)							

- NOTES:**
- FOR GENERAL NOTES AND REFERENCE DWG SEE LA-E-103.
 - PANEL L-CS-192-RP-01 SHALL BE SQUARE D CLASS 7400 MINI-POWER-ZONE. INTEGRAL 15KVA 3Ø TRANSFORMER, 12-POLE, TYPE OOB BREAKERS.
 - ALL LIGHTING CIRCUITS SHOWN ON THE LIGHTING PLAN ARE FROM PANEL L-CS-192-LP-01.
 - ALL RECEPTACLE CIRCUITS SHOWN ON THE POWER PLAN ARE FROM PANEL L-CS-192-RP-01 UNLESS OTHERWISE NOTED.
 - CIRCUITS SHOWN FEEDING THESE ITEM ARE FROM PANEL L-CS-192-LP-01.



LIGO-D961015-01-O

NO.	DATE	BY	CHKD	ENGR	PROJ	DESCRIPTION
1	8-7-98	JE	AK	MS	WW	ISSUED FOR AS-BUILT

ISSUED FOR CONSTRUCTION
 DRAWN M. M. 11-15-96
 CHECKED JCL 7-24-96
 ENGINEER KCR 10-25-96
 PROJ T. D. M. 11-15-96

AS-BUILT DRAWINGS

PARSONS

100 WEST WALNUT STREET
 PASADENA, CALIFORNIA

LIGO

CALIFORNIA INSTITUTE OF TECHNOLOGY
 MASSACHUSETTS INSTITUTE OF TECHNOLOGY

LASER INTERFEROMETER
 GRAVITATIONAL-WAVE OBSERVATORY
 SITE NO. 2 - LIVINGSTON, LOUISIANA

ELECTRICAL CORNER STATION CHILLER PLANT & MAINT BLDG POWER & LIGHTING PLANS

SCALE: AS NOTED CONTRACT NUMBER: PPI50969 PROJECT NUMBER: 8094 SHEET NUMBER: LA-E-113