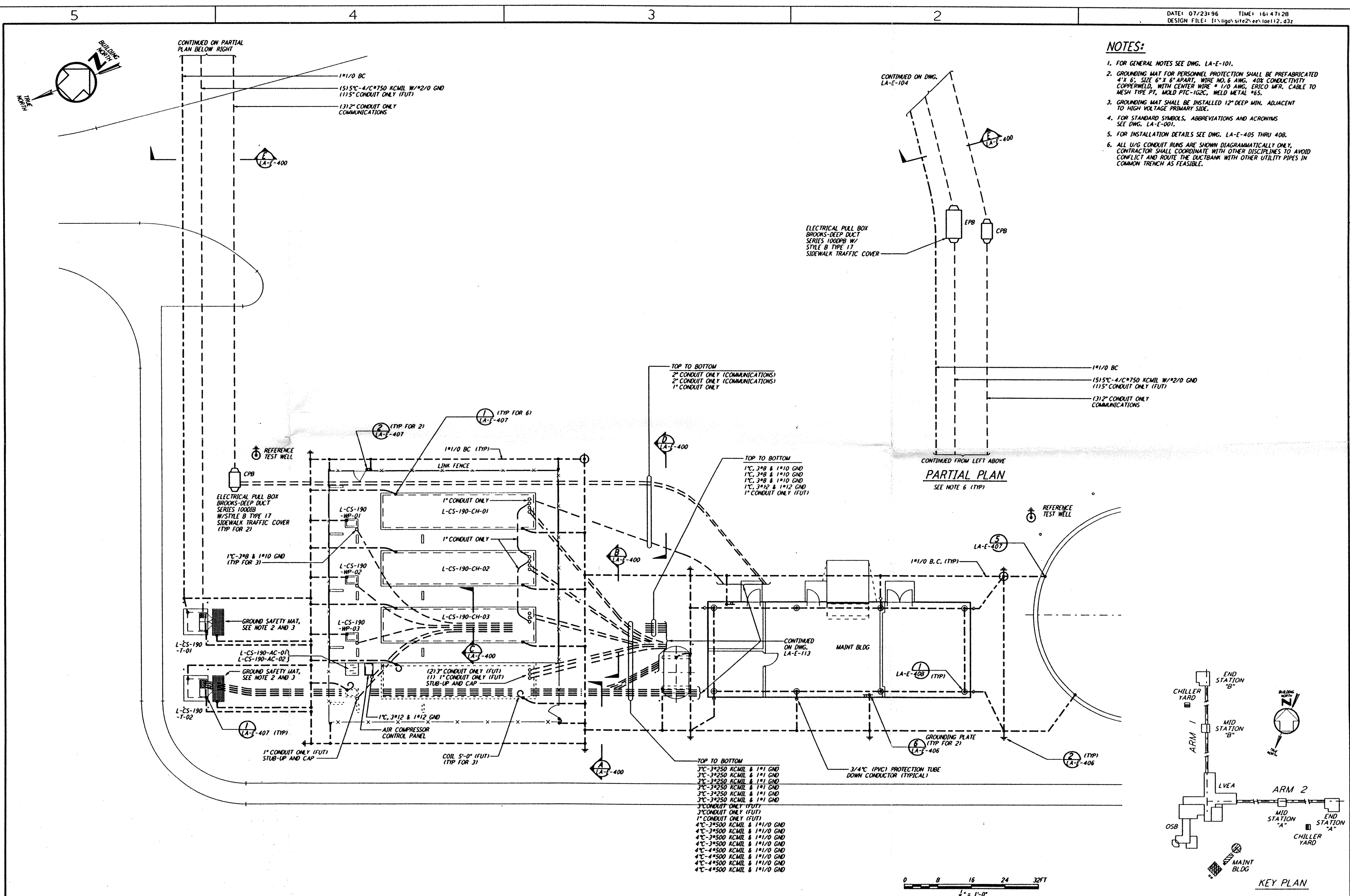


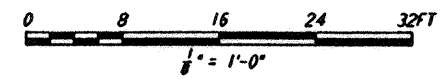
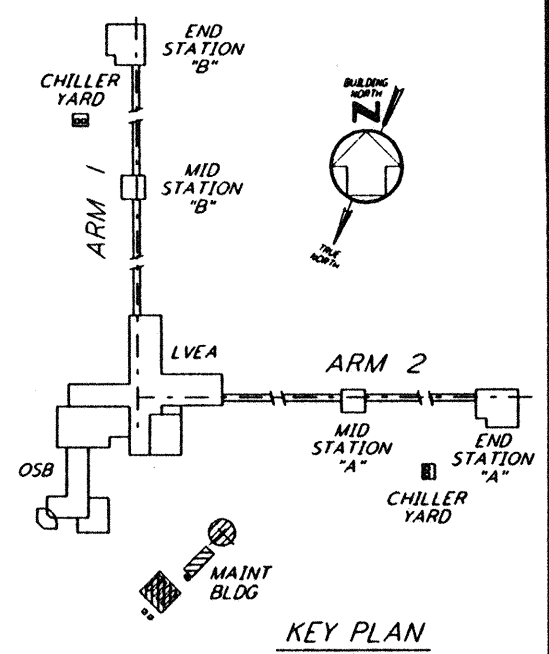
NOTES:

- FOR GENERAL NOTES SEE DWG. LA-E-101.
- GROUNDING MAT FOR PERSONNEL PROTECTION SHALL BE PREFABRICATED 4' X 6', SIZE 6" X 6" APART, WIRE NO. 6 AWG, 40X CONDUCTIVITY COPPERWELD, WITH CENTER WIRE # 1/0 AWG, ERICO MFR. CABLE TO MESH TYPE PT, MOLD PTC-1G2C, WELD METAL #65.
- GROUNDING MAT SHALL BE INSTALLED 12" DEEP MIN. ADJACENT TO HIGH VOLTAGE PRIMARY SIDE.
- FOR STANDARD SYMBOLS, ABBREVIATIONS AND ACRONYMS SEE DWG. LA-E-001.
- FOR INSTALLATION DETAILS SEE DWG. LA-E-405 THRU 408.
- ALL U/G CONDUIT RUNS ARE SHOWN DIAGRAMMATICALLY ONLY. CONTRACTOR SHALL COORDINATE WITH OTHER DISCIPLINES TO AVOID CONFLICT AND ROUTE THE DUCTBANK WITH OTHER UTILITY PIPES IN COMMON TRENCH AS FEASIBLE.

This document and the design it covers are the property of PARSONS. They are loaned only with the borrower's expressed written agreement that they will not be reproduced, copied, loaned, exhibited, or used in any other way, except by written consent from PARSONS to the borrower.



PARTIAL PLAN
SEE NOTE 6 (TYP)



NO.	DATE	BY	CHKD	ENGR	PROJ	DESCRIPTION
C	7-24-96	MM	JCL	TDM		ISSUED FOR BID
B	6-14-96	MM	JCL	AR		FINAL DESIGN REVIEW
A	10-31-95			TDM		PRELIMINARY DESIGN REVIEW

DRAWN	M. M.
CHECKED	
ENGINEER	
PROJ	

PARSONS
 100 WEST WALNUT STREET
 PASADENA, CALIFORNIA

LIGO
 CALIFORNIA INSTITUTE OF TECHNOLOGY
 MASSACHUSETTS INSTITUTE OF TECHNOLOGY

LASER INTERFEROMETER
 GRAVITATIONAL-WAVE OBSERVATORY
 SITE NO. 2 - LIVINGSTON, LOUISIANA

TITLE: **ELECTRICAL CORNER STATION CHILLER PLANT & MAINT BLDG GROUNDING PLAN**

SCALE: AS NOTED CONTRACT NUMBER: PPI50969 PROJECT NUMBER: 8094

LA-E-112

Tue Jul 23 16:46:51 1996 s3-v18b2 J:\PLOTS\QUEUES\18B2\EE112.PR