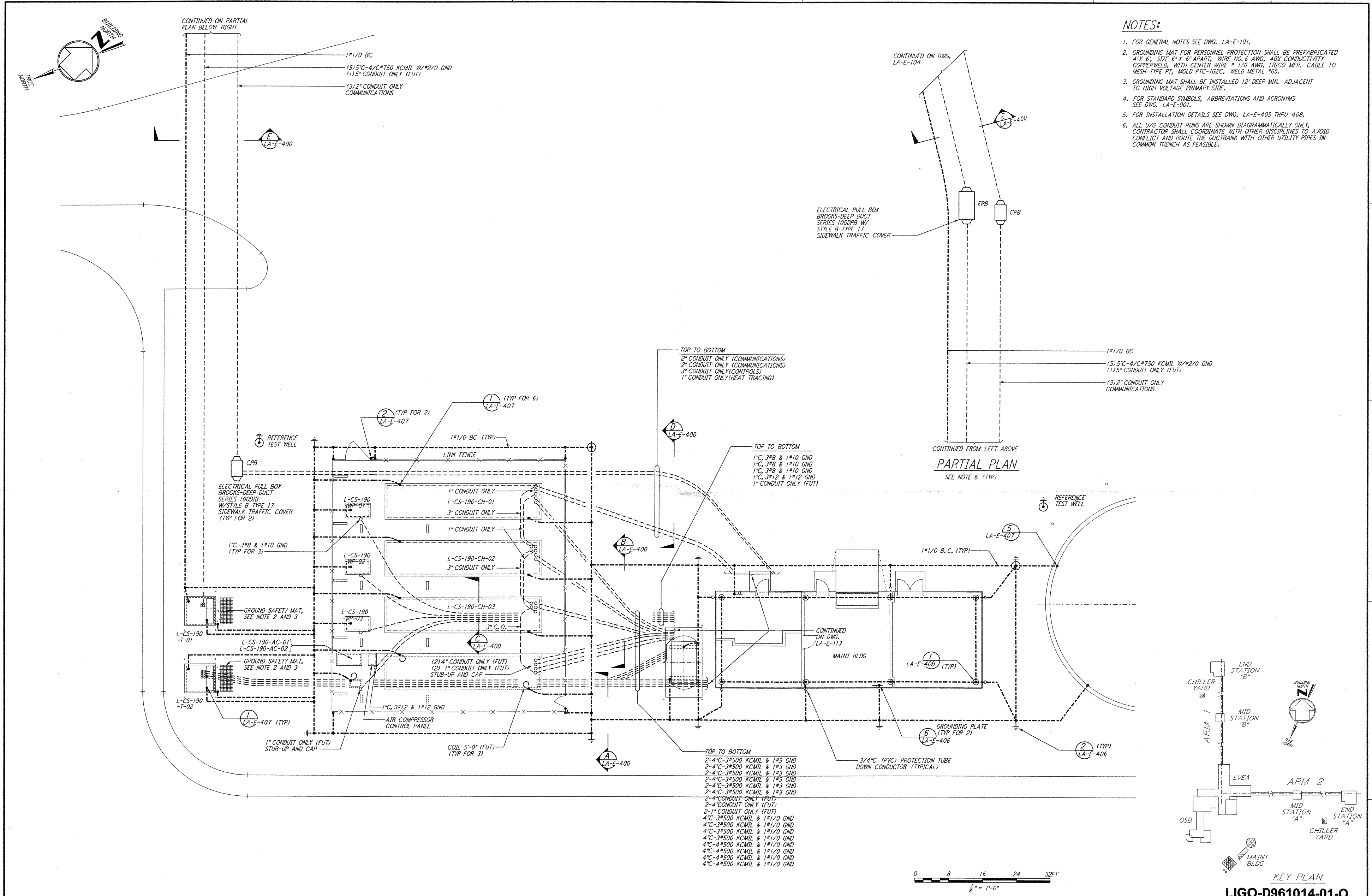
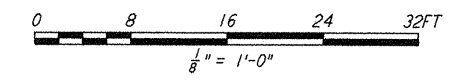
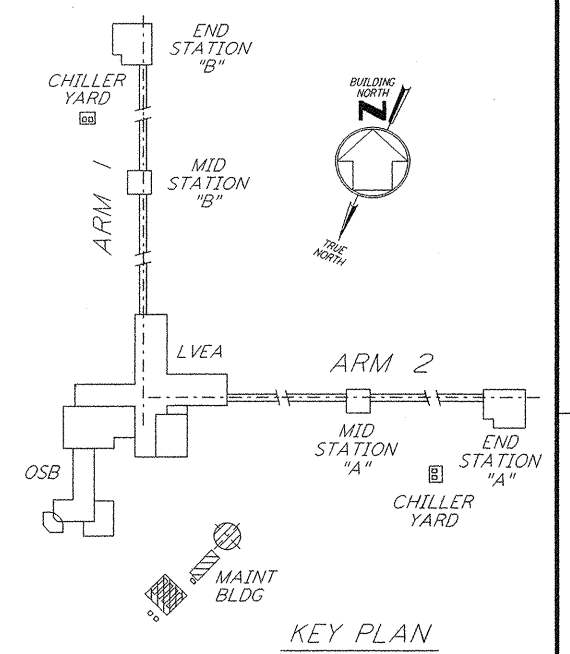


This document and the design it covers are the property of PARSONS. They are loaned only with the borrower's expressed written agreement that they will not be reproduced, copied, loaned, exhibited, or used in any other way, except by written consent from PARSONS to the borrower.



- NOTES:**
- FOR GENERAL NOTES SEE DWG. LA-E-101.
 - GROUNDING MAT FOR PERSONNEL PROTECTION SHALL BE PREFABRICATED 4' X 6', SIZE 6" X 6" APART, WIRE NO. 6 AWG, 40X CONDUCTIVITY COPPERWELD, WITH CENTER WIRE # 1/0 AWG, ERICO MFR. CABLE TO MESH TYPE PT, MOLD FTC-162C, WELD METAL #6S.
 - GROUNDING MAT SHALL BE INSTALLED 12" DEEP MIN. ADJACENT TO HIGH VOLTAGE PRIMARY SIDE.
 - FOR STANDARD SYMBOLS, ABBREVIATIONS AND ACRONYMS SEE DWG. LA-E-001.
 - FOR INSTALLATION DETAILS SEE DWG. LA-E-405 THRU 408.
 - ALL U/G CONDUIT RUNS ARE SHOWN DIAGRAMMATICALLY ONLY. CONTRACTOR SHALL COORDINATE WITH OTHER DISCIPLINES TO AVOID CONFLICT AND ROUTE THE DUCTBANK WITH OTHER UTILITY PIPES IN COMMON TRENCH AS FEASIBLE.



NO.	DATE	BY	CHKD	ENGR	PROJ	DESCRIPTION
1	8-7-98	JE	JK	WJ		ISSUED FOR AS-BUILT

ISSUED FOR CONSTRUCTION
 DRAWN M. M. 11-15-96
 CHECKED JCL 7-24-96
 ENGINEER KCR 10-25-96
 PROJ T. D. M. 11-15-96

AS-BUILT DRAWINGS

PARSONS
 100 WEST WALNUT STREET
 PASADENA, CALIFORNIA

LIGO
 CALIFORNIA INSTITUTE OF TECHNOLOGY
 MASSACHUSETTS INSTITUTE OF TECHNOLOGY

LIGO-D961014-01-0 LASER INTERFEROMETER GRAVITATIONAL-WAVE OBSERVATORY SITE NO. 2 - LIVINGSTON, LOUISIANA			
TITLE	SCALE	CONTRACT NUMBER	PROJECT NUMBER
ELECTRICAL CORNER STATION CHILLER PLANT & MAINT BLDG GROUNDING PLAN	AS NOTED	PP150969	8094
LA-E-112			