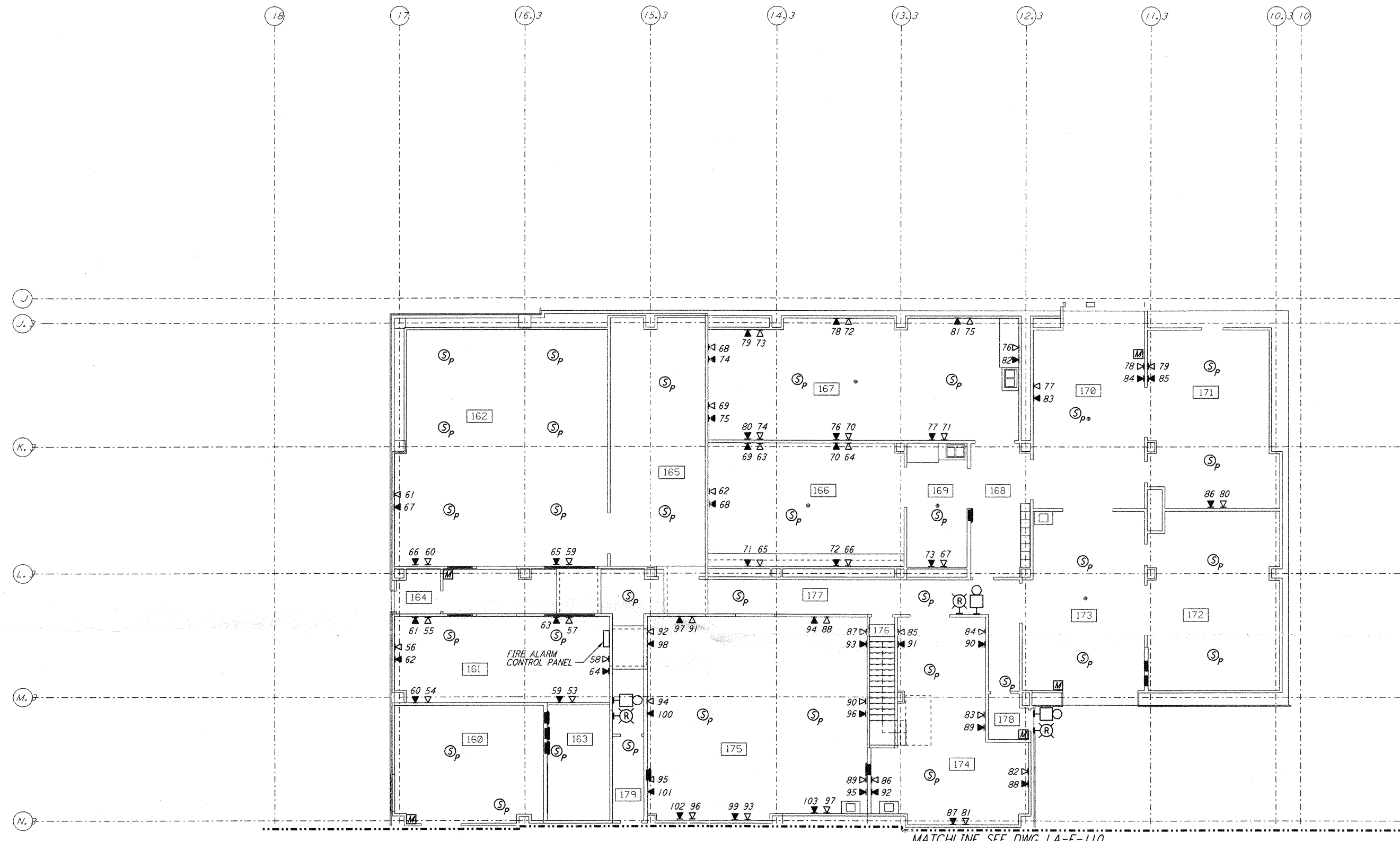
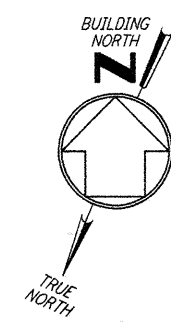
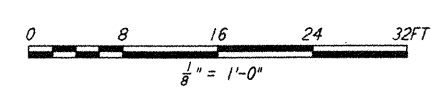
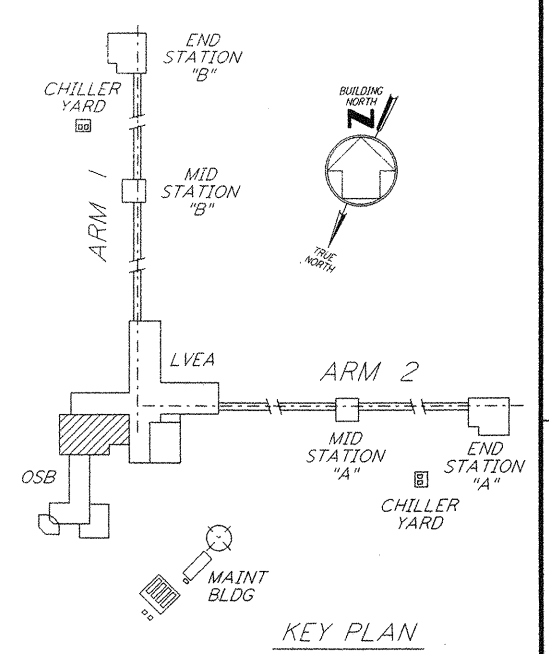


**NOTES:**

1. FOR PLAN SYMBOLS SEE DWG LA-E-002.
2. WIRING FOR FIRE DETECTION SHALL BE CLASS "A". FOR FIRE ALARM DEVICES SHALL BE CLASS "B". WIRING INSTALLED IN CONCEALED CONDUIT FOR FIRE DETECTION AND SECURITY SYSTEMS SHALL BE DONE BY OTHERS.
3. DUCT MOUNTED SMOKE DETECTORS SHALL BE PROVIDED WITH AN AUXILIARY RELAY CONTACT (N.C.) FOR EQUIPMENT SHUT-DOWN.
4. COORDINATE SMOKE DETECTOR LOCATIONS WITH CLEAN AGENT DISCHARGE NOZZLES.
5. COORDINATE AHU LOCATIONS WITH DUCT MOUNTED SMOKE DETECTORS.



MATCHLINE SEE DWG LA-E-110



not be reproduced, copied, loaned, exhibited, or used in any other way, except by written consent from PARSONS to the borrower.

This document and the design it covers are the property of PARSONS. They are loaned only with the borrower's expressed written agreement that they will

NO.	DATE	BY	CHKD	ENGR	PROJ	DESCRIPTION
2	8-7-98	JE	PK	WV		ISSUED FOR AS-BUILT
1	2-28-97	J. G.	RDC	KCR	T. D. M.	GENERAL REVISIONS

ISSUED FOR CONSTRUCTION  
 DRAWN M. M. 11-15-96  
 CHECKED J. C. L. 7-24-96  
 ENGINEER K. C. R. 10-25-96  
 PROJ T. D. M. 11-15-96

**AS-BUILT DRAWINGS**

**PARSONS**  
 100 WEST WALNUT STREET  
 PASADENA, CALIFORNIA

**LIGO**  
 CALIFORNIA INSTITUTE OF TECHNOLOGY  
 MASSACHUSETTS INSTITUTE OF TECHNOLOGY

LASER INTERFEROMETER  
 GRAVITATIONAL-WAVE OBSERVATORY  
 SITE NO. 2 - LIVINGSTON, LOUISIANA

**ELECTRICAL CORNER STATION  
 OSB LAB AREA FIRE DET & SECURITY PLAN**

SHEET NUMBER: **LA-E-111**

CONTRACT NUMBER: PPI50969  
 PROJECT NUMBER: 8094