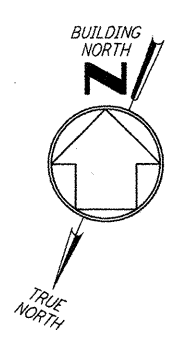


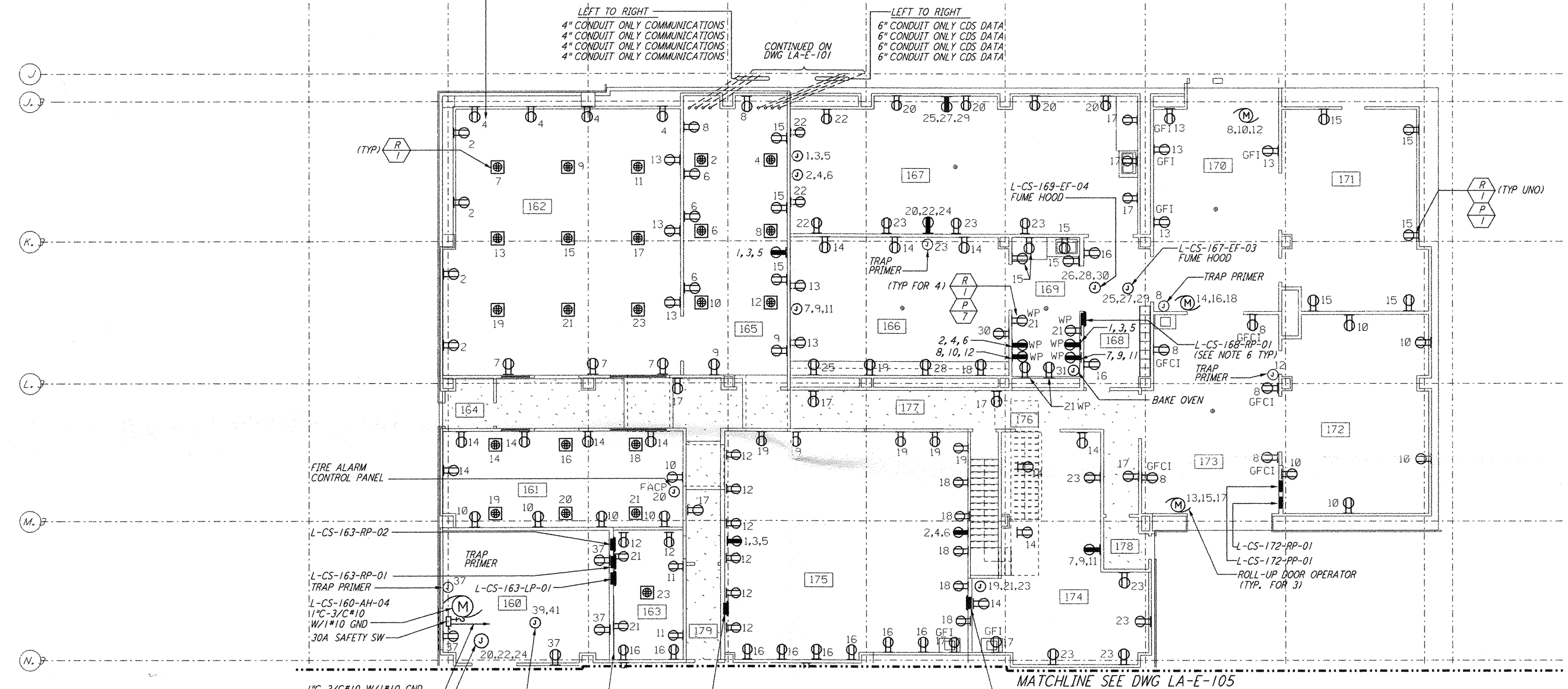
- LEGEND:**
- ⊕ RECEPTACLE, 20BY, 3Ø, 5W, 4 POLE GROUNDING
 NEMA L21-30R HUBBELL #2810 WITH WEATHERPROOF BOX AND COVER
 - ⊖ RECEPTACLE, 20BY, 3Ø, 5W, 4 POLE GROUNDING
 NEMA L21-30R HUBBELL #2810 WITH BOX AND COVER

- NOTES:**
1. FOR ABBREVIATIONS AND ACRONYMS SEE DWG. LA-E-001.
 2. FOR SYMBOLS SEE DWG. LA-E-002.
 3. FOR GENERAL NOTES SEE DWG. LA-E-100.
 4. PANELS L-CS-175-RP-01 AND L-CS-175-RP-02 ARE RESERVED FOR CUSTOMER USE.
 5. NOT USED.
 6. FOR ALL PANEL FEEDER CONDUIT AND CABLE SIZES SEE SINGLE LINE DIAGRAM DWG LA-E-006. ROUTE CABLES IN CONCEALED CONDUIT TO L-CS-107-SB-01 FOR LOCATION SEE DWG LA-E-100.
 7. SEE PANEL SCHEDULES ON DWG LA-E-115 & LA-E-116 FOR GFCI CIRCUITS.

- REFERENCE DRAWINGS:**
- LA-E-109 COMMUNICATION RISER DIAGRAM
 - LA-E-115 LIGHTING AND POWER PANEL SCHEDULES
 - LA-E-116 LIGHTING AND POWER PANEL SCHEDULES



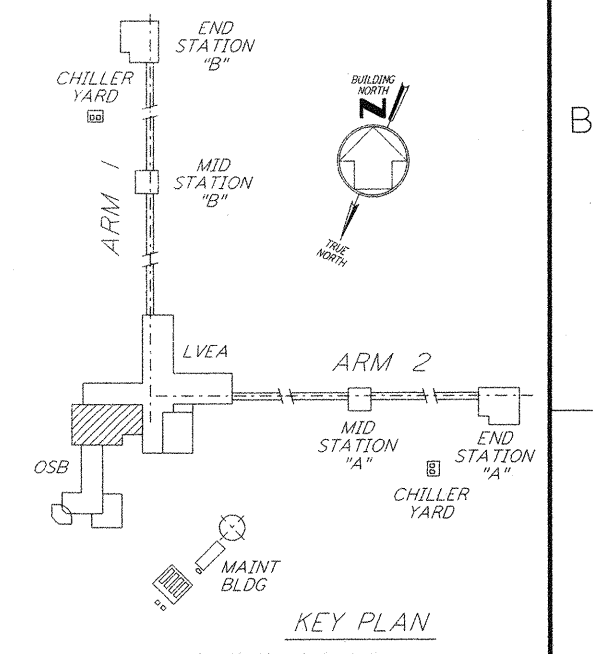
CIRCUIT NUMBER
 SEE RECEPTACLE/POWER PANEL IDENTIFICATION SCHEDULE AT LOWER LEFT FOR PANEL NUMBER (UNLESS OTHERWISE NOTED) (TYP)



RECEPTACLE/POWER PANEL NUMBER IDENTIFICATION SCHEDULE (SEE NOTE 7)

ROOM NUMBER	PANEL NUMBER FOR DUPLEX RECEPTACLE	PANEL NUMBER FOR DUAL-DUPLEX RECEPTACLE	PANEL NUMBER FOR 3Ø, 5-POLE RECEPTACLE	PANEL NUMBER FOR JUNCTION BOX POWER	PANEL NUMBER FOR ROLL-UP DOOR POWER
160	L-CS-163-RP-01	---	---	L-CS-163-RP-01	---
161	L-CS-163-RP-01	L-CS-163-RP-02	---	L-CS-163-RP-01	---
162	L-CS-163-RP-01	L-CS-163-RP-02	---	---	---
163	L-CS-163-RP-01	L-CS-163-RP-02	---	---	---
164	---	---	---	---	---
165	L-CS-163-RP-01	L-CS-163-RP-02	L-CS-163-RP-01	---	---
166	L-CS-168-RP-01	---	---	L-CS-172-PP-01	---
167	L-CS-168-RP-01	---	L-CS-172-RP-01	L-CS-172-PP-01	---
168	L-CS-168-RP-01	---	---	---	---
169	L-CS-168-RP-01	---	L-CS-168-RP-01	L-CS-172-PP-01	---
170	L-CS-172-RP-01	---	---	---	L-CS-172-PP-01
171	L-CS-172-RP-01	---	---	---	---
172	L-CS-172-RP-01	---	---	---	---
173	L-CS-172-RP-01	---	---	---	L-CS-172-PP-01
174	L-CS-172-RP-01	---	L-CS-172-RP-01	L-CS-172-PP-01	---
175	L-CS-172-RP-01	---	L-CS-172-RP-01	---	---
176	---	---	---	---	---
177	L-CS-163-RP-01	---	---	---	---
178	---	---	---	---	---
179	L-CS-163-RP-01	---	---	---	---

1" 3/C#10 W/1#10 GND TO L-CS-107-MC-01 DWG LA-E-100.
 L-CS-160-HC-13 1 1/2" 3/C#2 W/1#6 GND (SEE NOTE 5)
 L-CS-160-SV-18
 L-CS-175-RP-01 (NOTE 4)
 L-CS-175-RP-02 (NOTE 4)
 L-A-E-401 TELEPHONE PBX & BACKBOARD



REFERENCES

NO.	DATE	BY	CHKD	ENGR	PROJ	DESCRIPTION
2	5-21-99	AO	AK	AG	MDW	ISSUED AS REVISED AS-BUILT
1	8-7-98	JE	AK	AG	MDW	ISSUED FOR AS-BUILT

ISSUED FOR CONSTRUCTION
 DRAWN M. M. 11-15-96
 CHECKED JCL 7-24-96
 ENGINEER KCR 10-25-96
 PROJ T. D. M. 11-15-96

AS-BUILT DRAWINGS

PARSONS
 100 WEST WALNUT STREET
 PASADENA, CALIFORNIA

LIGO
 CALIFORNIA INSTITUTE OF TECHNOLOGY
 MASSACHUSETTS INSTITUTE OF TECHNOLOGY

LASER INTERFEROMETER GRAVITATIONAL-WAVE OBSERVATORY
 SITE NO. 2 - LIVINGSTON, LOUISIANA

TITLE: ELECTRICAL CORNER STATION OSB LAB AREA RECEPTACLE & POWER PLAN
 SHEET NUMBER: NONE
 CONTRACT NUMBER: PPI50969
 PROJECT NUMBER: 8094

LA-E-106

This document and the design it covers are the property of PARSONS. They are loaned only with the borrower's expressed written agreement that they will not be reproduced, copied, loaned, exhibited, or used in any other way, except by written consent from PARSONS to the borrower.

5/21/99 3:19:58 PM C:\PLOT\JOB\531-9802.dwg 52885 KXT1982.dwg106.d3z