

LEGEND:

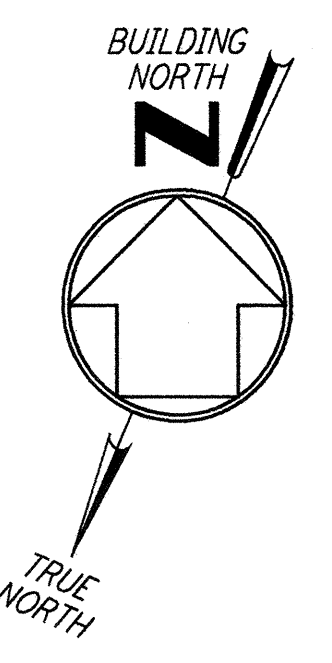
- WP RECEPTACLE, 208V, 3Ø, SW, 4 POLE GROUNDING
 NEMA L21-30R HUBBELL #2810 WITH WEATHERPROOF BOX AND COVER
- RECEPTACLE, 208V, 3Ø, SW, 4 POLE GROUNDING
 NEMA L21-30R HUBBELL #2810 WITH BOX AND COVER

NOTES:

1. FOR ABBREVIATIONS AND ACRONYMS SEE DWG. LA-E-001.
2. FOR SYMBOLS SEE DWG. LA-E-002.
3. FOR GENERAL NOTES SEE DWG. LA-E-100.
4. PANELS L-CS-175-RP-01 AND L-CS-175-RP-02 ARE RESERVED FOR CUSTOMER USE.
5. NOT USED.
6. FOR ALL PANEL FEEDER CONDUIT AND CABLE SIZES SEE SINGLE LINE DIAGRAM DWG LA-E-006. ROUTE CABLES IN CONCEALED CONDUIT TO L-CS-107-SB-01. FOR LOCATION SEE DWG LA-E-100.
7. SEE PANEL SCHEDULES ON DWG LA-E-115 & LA-E-116 FOR GFCI CIRCUITS.

REFERENCE DRAWINGS:

- LA-E-109 COMMUNICATION RISER DIAGRAM
- LA-E-115 LIGHTING AND POWER PANEL SCHEDULES
- LA-E-116 LIGHTING AND POWER PANEL SCHEDULES

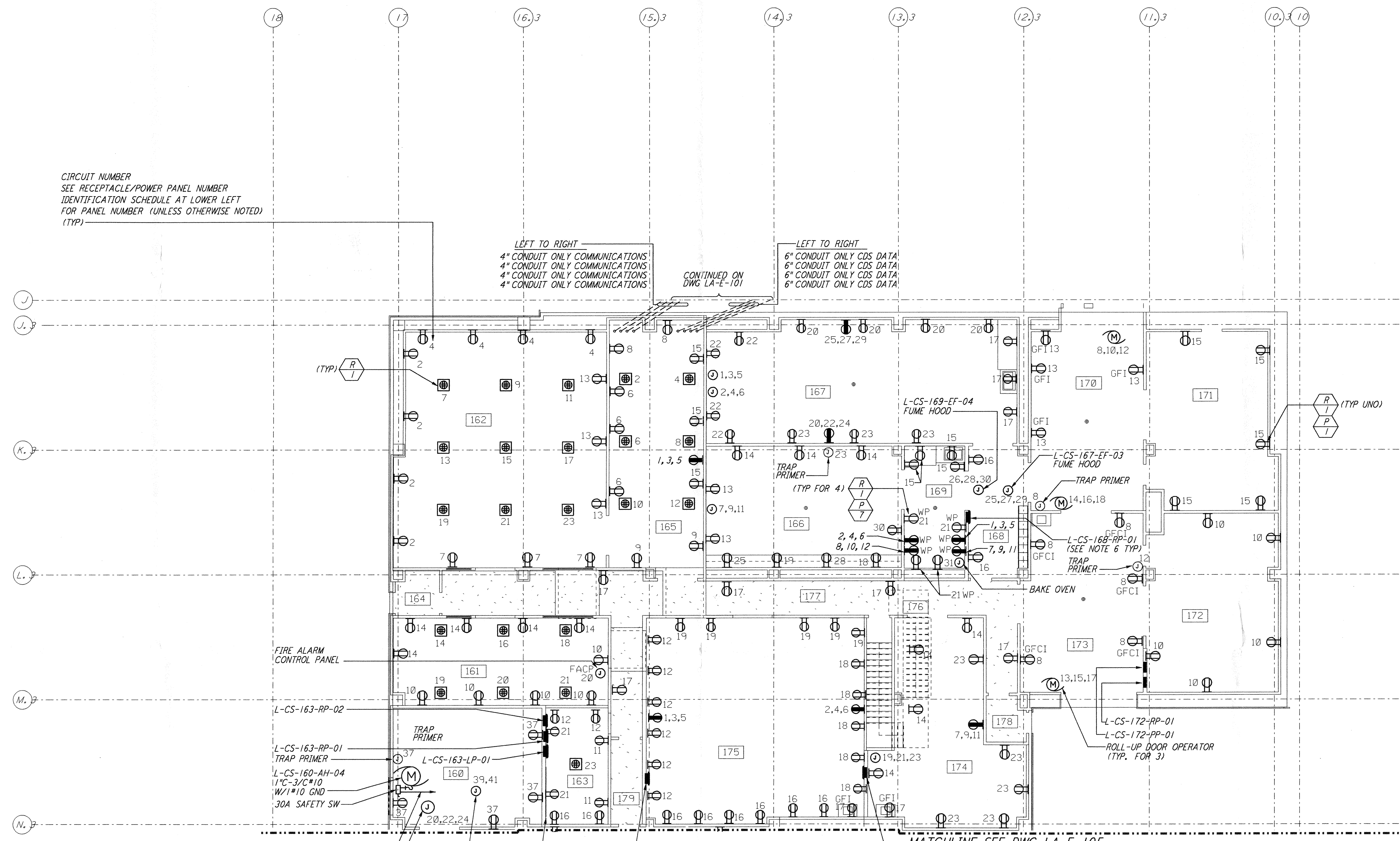


CIRCUIT NUMBER
 SEE RECEPTACLE/POWER PANEL NUMBER IDENTIFICATION SCHEDULE AT LOWER LEFT FOR PANEL NUMBER (UNLESS OTHERWISE NOTED) (TYP)

LEFT TO RIGHT
 4" CONDUIT ONLY COMMUNICATIONS
 4" CONDUIT ONLY COMMUNICATIONS
 4" CONDUIT ONLY COMMUNICATIONS
 4" CONDUIT ONLY COMMUNICATIONS

LEFT TO RIGHT
 6" CONDUIT ONLY CDS DATA
 6" CONDUIT ONLY CDS DATA
 6" CONDUIT ONLY CDS DATA
 6" CONDUIT ONLY CDS DATA

CONTINUED ON DWG LA-E-101



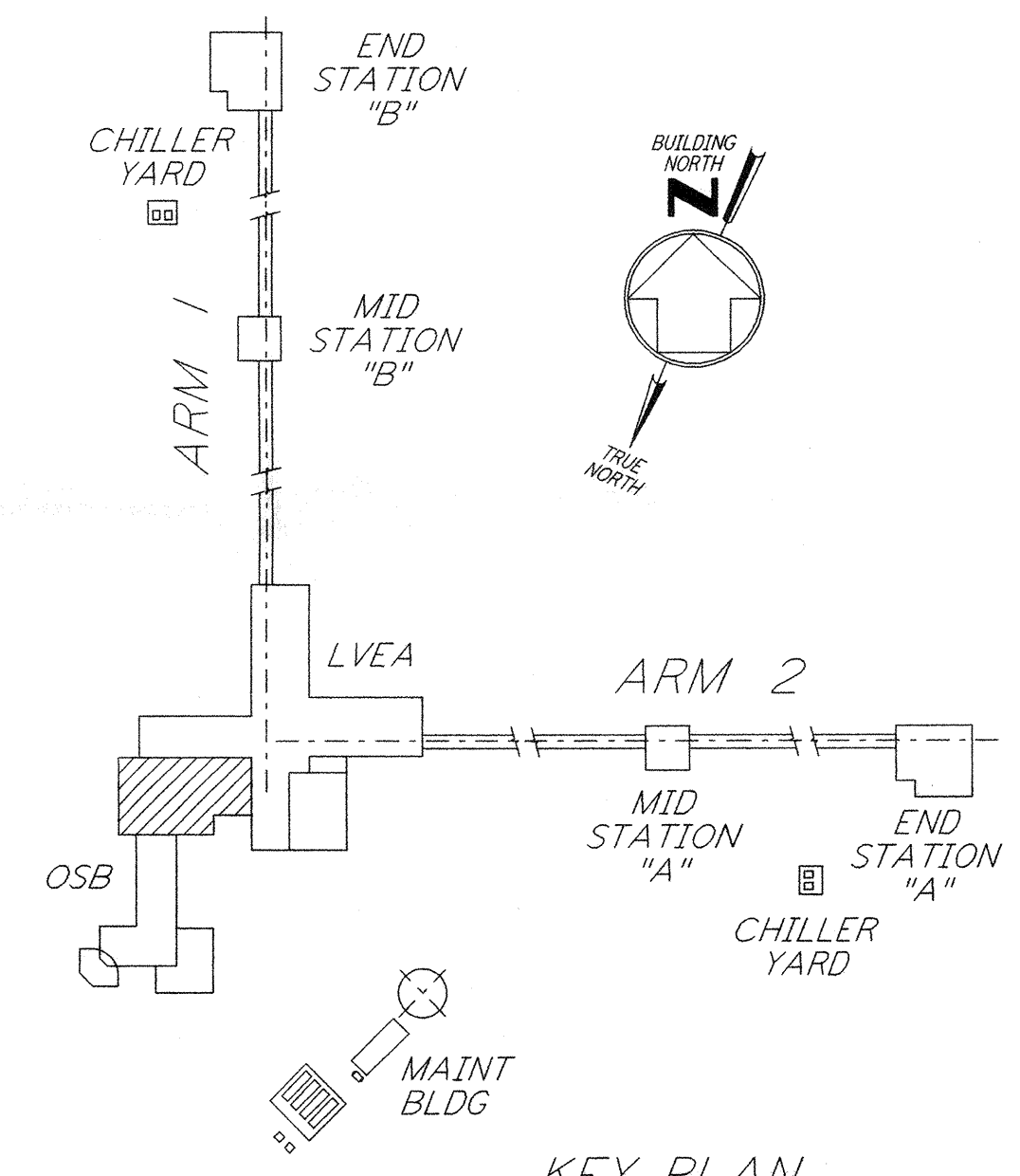
not be reproduced, copied, loaned, exhibited, or used in any other way, except by written consent from PARSONS to the borrower.

This document and the design it covers are the property of PARSONS. They are loaned only with the borrower's expressed written agreement that they will

RECEPTACLE/POWER PANEL NUMBER IDENTIFICATION SCHEDULE (SEE NOTE 7)					
ROOM NUMBER	PANEL NUMBER FOR DUPLEX RECEPTACLE	PANEL NUMBER FOR DUAL-DUPLEX RECEPTACLE	PANEL NUMBER FOR 3Ø, 5-POLE RECEPTACLE	PANEL NUMBER FOR JUNCTION BOX FOR ROLL-UP DOOR POWER	PANEL NUMBER FOR ROLL-UP DOOR POWER
160	L-CS-163-RP-01	---	---	L-CS-163-RP-01	---
161	L-CS-163-RP-01	L-CS-163-RP-02	---	L-CS-163-RP-01	---
162	L-CS-163-RP-01	L-CS-163-RP-02	---	---	---
163	L-CS-163-RP-01	L-CS-163-RP-02	---	---	---
164	---	---	---	---	---
165	L-CS-163-RP-01	L-CS-163-RP-02	L-CS-163-RP-01	---	---
166	L-CS-168-RP-01	---	---	L-CS-172-RP-01	---
167	L-CS-168-RP-01	---	L-CS-172-RP-01	L-CS-172-RP-01	---
168	L-CS-168-RP-01	---	---	---	---
169	L-CS-168-RP-01	---	L-CS-168-RP-01	L-CS-172-RP-01	---
170	L-CS-172-RP-01	---	---	---	L-CS-172-RP-01
171	L-CS-172-RP-01	---	---	---	---
172	L-CS-172-RP-01	---	---	---	---
173	L-CS-172-RP-01	---	---	---	L-CS-172-RP-01
174	L-CS-172-RP-01	---	L-CS-172-RP-01	L-CS-172-RP-01	---
175	L-CS-172-RP-01	---	L-CS-172-RP-01	---	---
176	---	---	---	---	---
177	L-CS-163-RP-01	---	---	---	---
178	---	---	---	---	---
179	L-CS-163-RP-01	---	---	---	---

1" C, 3/C#10 W/1#10 GND TO L-CS-107-MC-01 DWG LA-E-100.
 L-CS-160-HC-13 1 1/2" C-3/C#2 W/1#6 GND (SEE NOTE 5)

MATCHLINE SEE DWG LA-E-105



0 8 16 24 32 FT
 1" = 1'-0"

LIGO-D961008-02-O

LASER INTERFEROMETER GRAVITATIONAL-WAVE OBSERVATORY
 SITE NO. 2 - LIVINGSTON, LOUISIANA

TITLE	ELECTRICAL CORNER STATION OSB LAB AREA RECEPTACLE & POWER PLAN	SCALE	NONE	CONTRACT NUMBER	PPI50969	PROJECT NUMBER	8094
SHEET NUMBER	LA-E-106	REVISIONS					

PARSONS
 100 WEST WALNUT STREET
 PASADENA, CALIFORNIA

LIGO
 CALIFORNIA INSTITUTE OF TECHNOLOGY
 MASSACHUSETTS INSTITUTE OF TECHNOLOGY

ISSUED FOR CONSTRUCTION
 DRAWN M. M. 11-15-96
 CHECKED JCL 7-24-96
 ENGINEER KCR 10-25-96
 PROJ T. D. M. 11-15-96

AS-BUILT DRAWINGS

NO.	DATE	BY	CHKD	ENGR	PROJ	DESCRIPTION
2	5-21-99	AO				ISSUED AS REVISED AS-BUILT
1	8-7-98	JE	AK	AG	MDW	ISSUED FOR AS-BUILT