

LEGEND:

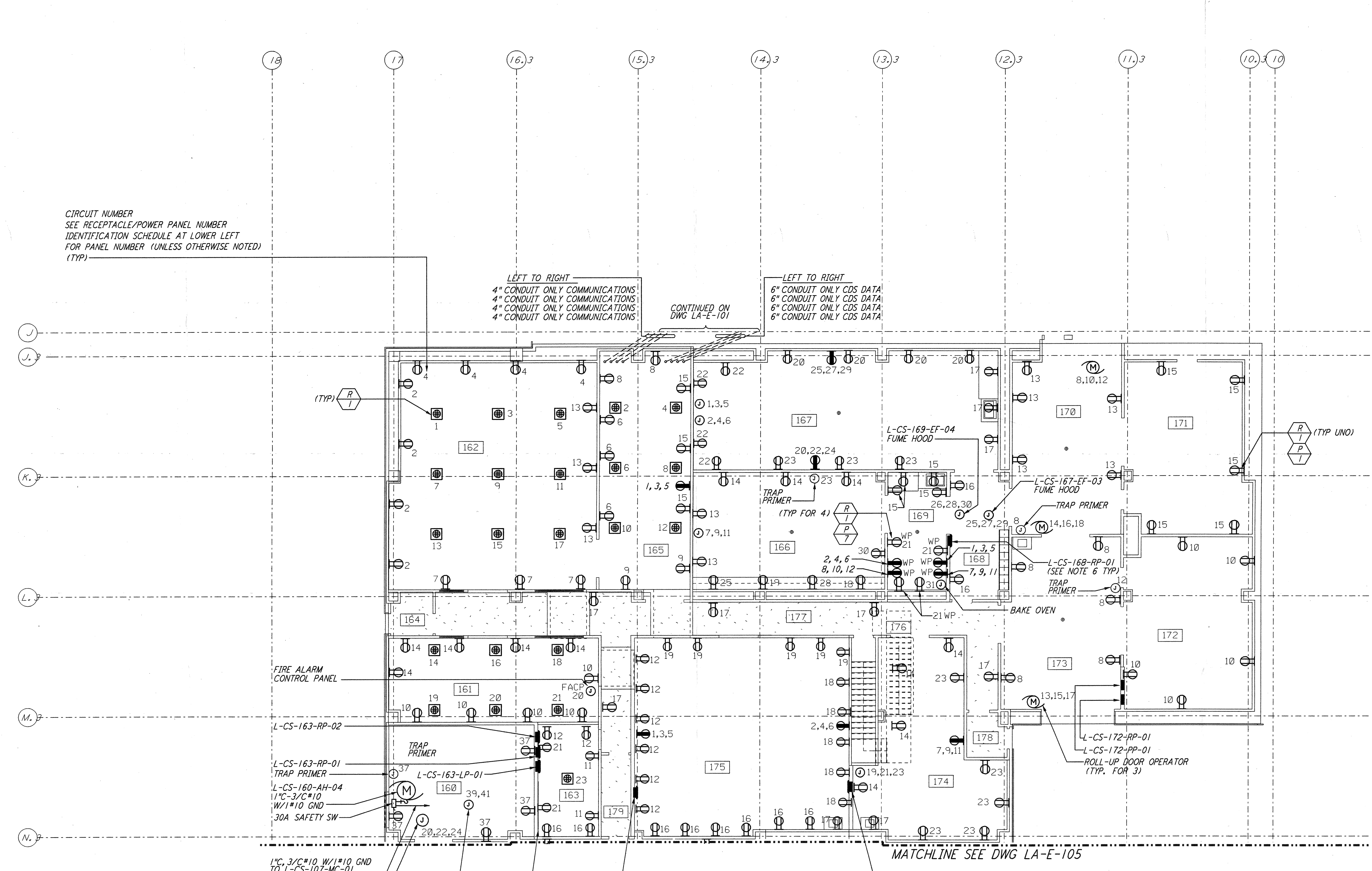
- WP RECEPTACLE, 208V, 3Ø, 5W, 4 POLE GROUNDING
 NEMA L21-3ØR HUBBELL #2810 WITH WEATHERPROOF BOX AND COVER
- RECEPTACLE, 208V, 3Ø, 5W, 4 POLE GROUNDING
 NEMA L21-3ØR HUBBELL #2810 WITH BOX AND COVER

NOTES:

1. FOR ABBREVIATIONS AND ACRONYMS SEE DWG. LA-E-001.
2. FOR SYMBOLS SEE DWG. LA-E-002.
3. FOR GENERAL NOTES SEE DWG. LA-E-100.
4. PANELS L-CS-175-RP-01 AND L-CS-175-RP-02 ARE RESERVED FOR CUSTOMER USE.
5. NOT USED.
6. FOR ALL PANEL FEEDER CONDUIT AND CABLE SIZES SEE SINGLE LINE DIAGRAM DWG LA-E-006. ROUTE CABLES IN CONCEALED CONDUIT TO L-CS-107-SB-01. FOR LOCATION SEE DWG LA-E-100.
7. SEE PANEL SCHEDULES ON DWG LA-E-115 & LA-E-116 FOR GFCI CIRCUITS.

REFERENCE DRAWINGS:

- LA-E-109 COMMUNICATION RISER DIAGRAM
- LA-E-115 LIGHTING AND POWER PANEL SCHEDULES
- LA-E-116 LIGHTING AND POWER PANEL SCHEDULES



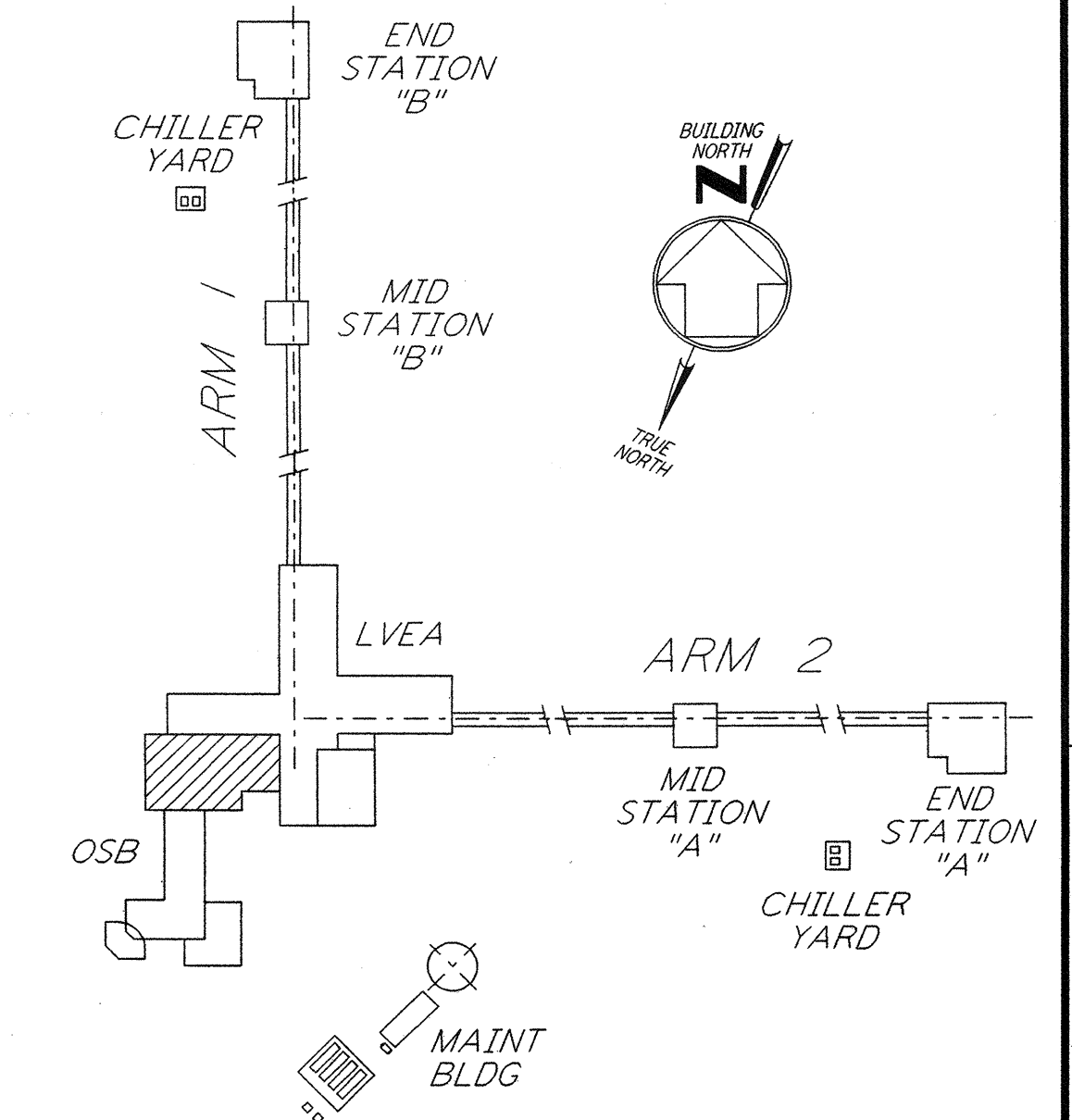
CIRCUIT NUMBER
 SEE RECEPTACLE/POWER PANEL NUMBER IDENTIFICATION SCHEDULE AT LOWER LEFT FOR PANEL NUMBER (UNLESS OTHERWISE NOTED) (TYP)

LEFT TO RIGHT
 4" CONDUIT ONLY COMMUNICATIONS
 4" CONDUIT ONLY COMMUNICATIONS
 4" CONDUIT ONLY COMMUNICATIONS
 4" CONDUIT ONLY COMMUNICATIONS

LEFT TO RIGHT
 6" CONDUIT ONLY CDS DATA
 6" CONDUIT ONLY CDS DATA
 6" CONDUIT ONLY CDS DATA
 6" CONDUIT ONLY CDS DATA

RECEPTACLE/POWER PANEL NUMBER IDENTIFICATION SCHEDULE (SEE NOTE 7)					
ROOM NUMBER	PANEL NUMBER FOR DUPLEX RECEPTACLE	PANEL NUMBER FOR DUAL-DUPLEX RECEPTACLE	PANEL NUMBER FOR 3Ø, 5-POLE RECEPTACLE	PANEL NUMBER FOR JUNCTION BOX POWER	PANEL NUMBER FOR ROLL-UP DOOR POWER
160	L-CS-163-RP-01	---	---	L-CS-163-RP-01	---
161	L-CS-163-RP-01	L-CS-163-RP-02	---	L-CS-163-RP-01	---
162	L-CS-163-RP-01	L-CS-163-RP-02	---	---	---
163	L-CS-163-RP-01	L-CS-163-RP-02	---	---	---
164	---	---	---	---	---
165	L-CS-163-RP-01	L-CS-163-RP-02	L-CS-163-RP-01	---	---
166	L-CS-168-RP-01	---	---	L-CS-172-PP-01	---
167	L-CS-168-RP-01	---	L-CS-172-RP-01	L-CS-172-PP-01	---
168	L-CS-168-RP-01	---	---	---	---
169	L-CS-168-RP-01	---	L-CS-168-RP-01	L-CS-172-PP-01	---
170	L-CS-172-RP-01	---	---	---	L-CS-172-PP-01
171	L-CS-172-RP-01	---	---	---	---
172	L-CS-172-RP-01	---	---	---	---
173	L-CS-172-RP-01	---	---	---	L-CS-172-PP-01
174	L-CS-172-RP-01	---	L-CS-172-RP-01	L-CS-172-PP-01	---
175	L-CS-172-RP-01	---	L-CS-172-RP-01	---	---
176	---	---	---	---	---
177	L-CS-163-RP-01	---	---	---	---
178	---	---	---	---	---
179	L-CS-163-RP-01	---	---	---	---

1" C, 3" C #10 W/1" #10 GND TO L-CS-107-MC-01 DWG LA-E-100.
 L-CS-160-HC-13 1 1/2" C-3" C #2 W/1" #6 GND (SEE NOTE 5)



0 8 16 24 32 FT
 1/8" = 1'-0"

ISSUED FOR CONSTRUCTION
 DRAWN M. M. 11-15-96
 CHECKED JCL 7-24-96
 ENGINEER KCR 10-25-96
 PROJ T. D. M. 11-15-96

AS-BUILT DRAWINGS



100 WEST WALNUT STREET
 PASADENA, CALIFORNIA



CALIFORNIA INSTITUTE OF TECHNOLOGY
 MASSACHUSETTS INSTITUTE OF TECHNOLOGY

LASER INTERFEROMETER
 GRAVITATIONAL-WAVE OBSERVATORY
 SITE NO. 2 - LIVINGSTON, LOUISIANA

TITLE ELECTRICAL CORNER STATION OSB LAB AREA RECEPTACLE & POWER PLAN	SCALE NONE	CONTRACT NUMBER PP150969	PROJECT NUMBER 8094
	SHEET NUMBER LA-E-106		REVISIONS

of PARSONS they are loaned only with the borrower's expressed written agreement that they will
 any other way, except by written consent from
 PARSONS to the borrower.

NO.	DATE	BY	CHKD	ENGR	PROJ	DESCRIPTION
1	8-7-98	JE	AK	AW	WV	ISSUED FOR AS-BUILT