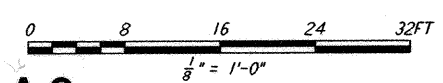
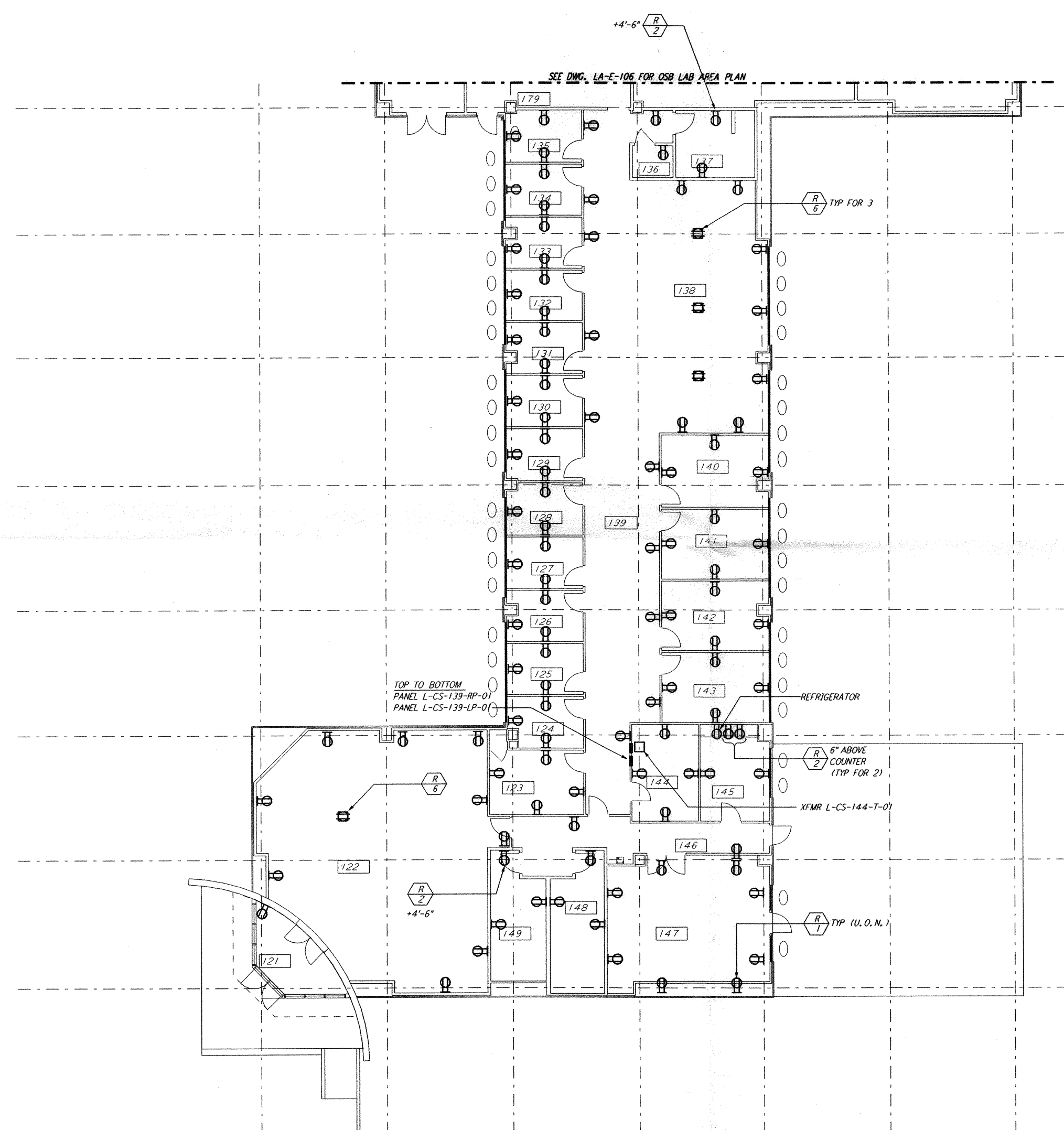
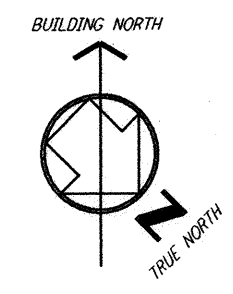


**NOTES:**  
 1. FOR GENERAL NOTES, SEE DWG. LA-E-101.



LIGO-D961007-A-0

NO.	DATE	APRD BY	DESCRIPTION OF REVISION
9			
8			
7			
6			
5			
4			
3			
2			
1			

NO.	DATE	APRD BY	ISSUED FOR
A	10-31-95	TDM	PRELIMINARY DESIGN REVIEW

DATE	10-31-95
DRAWN	J. G.
CHECKED	
ENGINEER	
PROJ MGR	

**PARSONS**  
 100 WEST WALNUT STREET  
 PASADENA, CALIFORNIA

**LIGO**  
 CALIFORNIA INSTITUTE OF TECHNOLOGY  
 MASSACHUSETTS INSTITUTE OF TECHNOLOGY

LASER INTERFEROMETER  
 GRAVITATIONAL-WAVE OBSERVATORY  
 SITE NO. 2 - LIVINGSTON, LOUISIANA

**ELECTRICAL  
 CORNER STATION  
 OFFICE AREA  
 POWER PLAN**

SCALE: AS NOTED  
 CONTRACT NUMBER: PP150969  
 PROJECT NUMBER: 8094  
**LA-E-105**

This document and the design it covers are the property of PARSONS. They are loaned only with the borrower's expressed written agreement that they will not be reproduced, copied, loaned, exhibited, or used in any other way, except by written consent from PARSONS to the borrower.

Tue Oct 31 01:23:52 1995 s3-v18b2 J:\PLOTS\OUEUES\18B2\EE105B.PRF