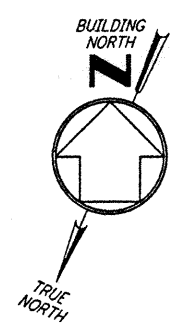
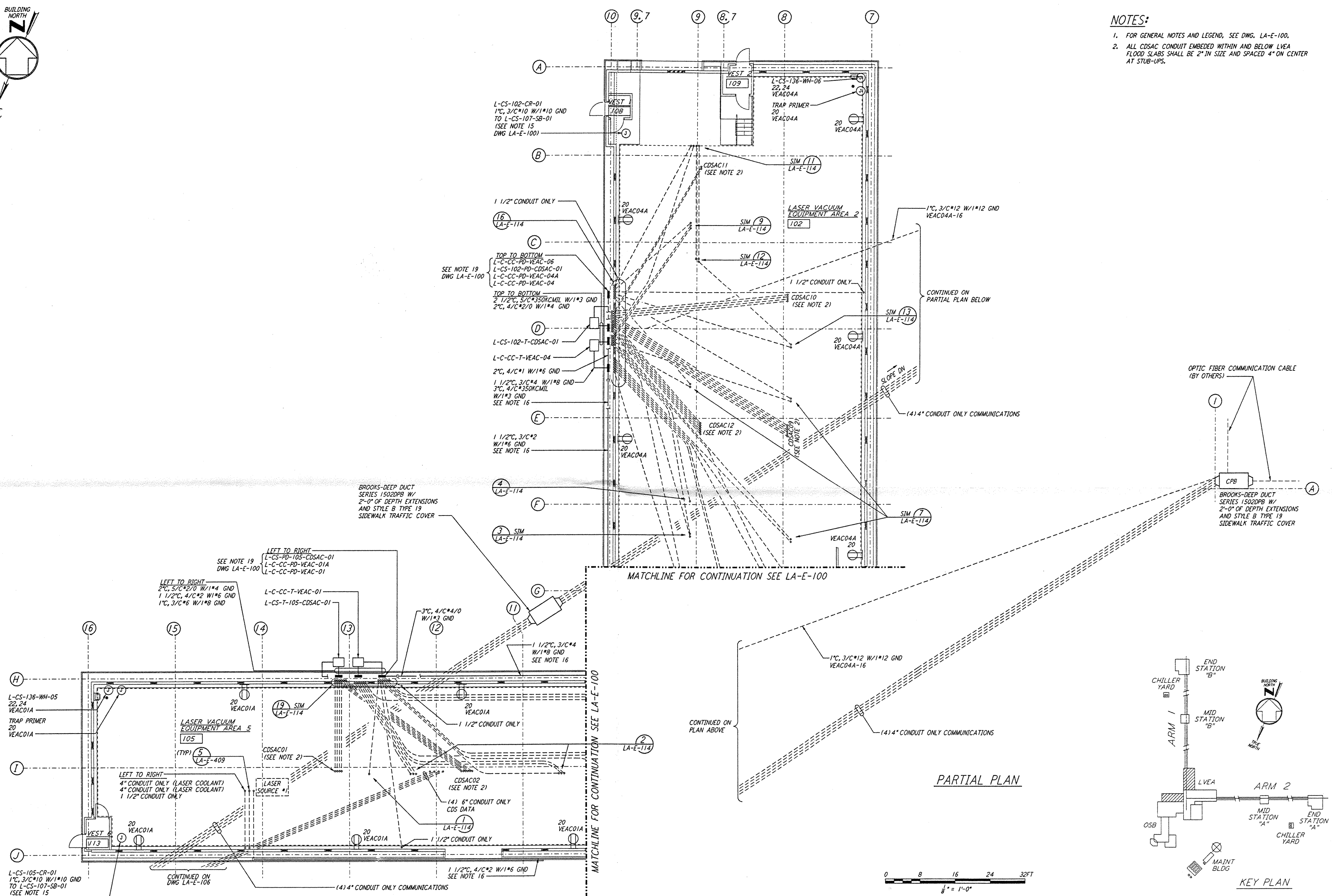


- NOTES:**
- FOR GENERAL NOTES AND LEGEND, SEE DWG. LA-E-100.
 - ALL CDSAC CONDUIT EMBEDDED WITHIN AND BELOW FLOOD SLABS SHALL BE 2" IN SIZE AND SPACED 4" ON CENTER AT STUB-UPS.

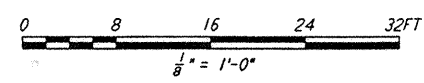
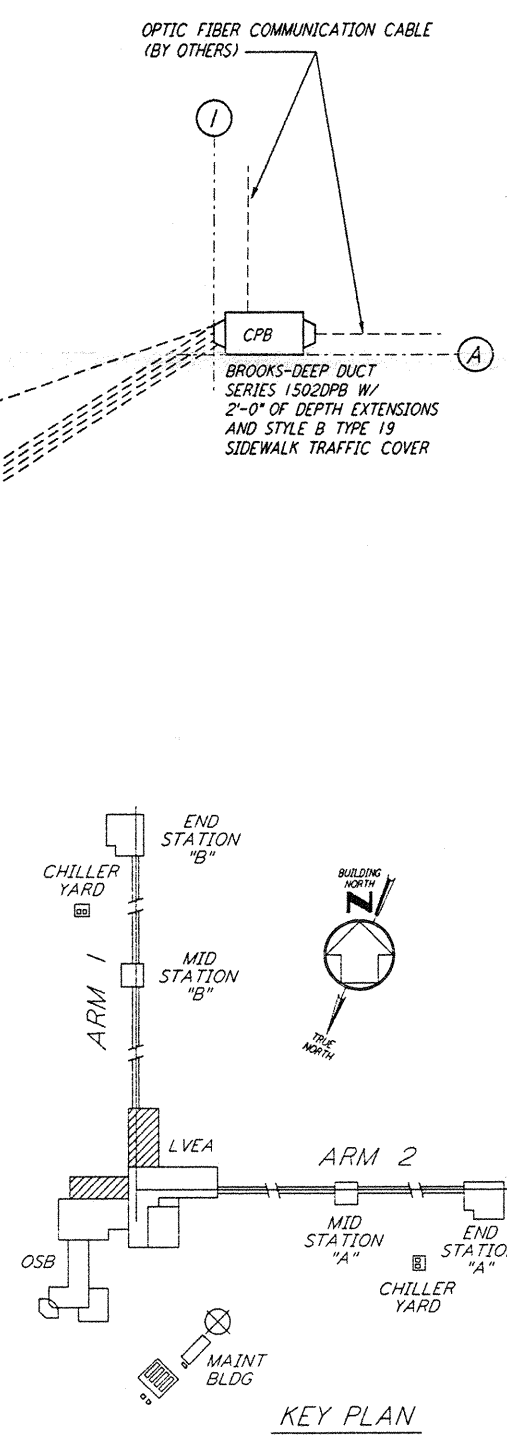


This document and the design it covers are the property of PARSONS. They are loaned only with the borrower's expressed written agreement that they will not be reproduced, copied, loaned, exhibited, or used in any other way, except by written consent from PARSONS to the borrower.

This document and the design it covers are the property of PARSONS. They are loaned only with the borrower's expressed written agreement that they will not be reproduced, copied, loaned, exhibited, or used in any other way, except by written consent from PARSONS to the borrower.

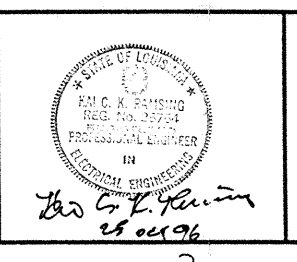


PARTIAL PLAN



NO.	DATE	BY	CHKD	ENGR	PROJ	DESCRIPTION

ISSUED FOR CONSTRUCTION	DATE	BY
DRAWN	M.M.	11-15-96
CHECKED	JCL	7-24-96
ENGINEER	JCL	10-25-96
PROJ	5099	11/15/96



PARSONS

100 WEST WALNUT STREET
 PASADENA, CALIFORNIA

LIGO

CALIFORNIA INSTITUTE OF TECHNOLOGY
 MASSACHUSETTS INSTITUTE OF TECHNOLOGY

LASER INTERFEROMETER
 GRAVITATIONAL-WAVE OBSERVATORY
 SITE NO. 2 - LIVINGSTON, LOUISIANA

TITLE: ELECTRICAL CORNER STATION RECEPTACLE & POWER PLAN

AS NOTED PPI50969 8 4

LA-E-101