

GENERAL NOTES:

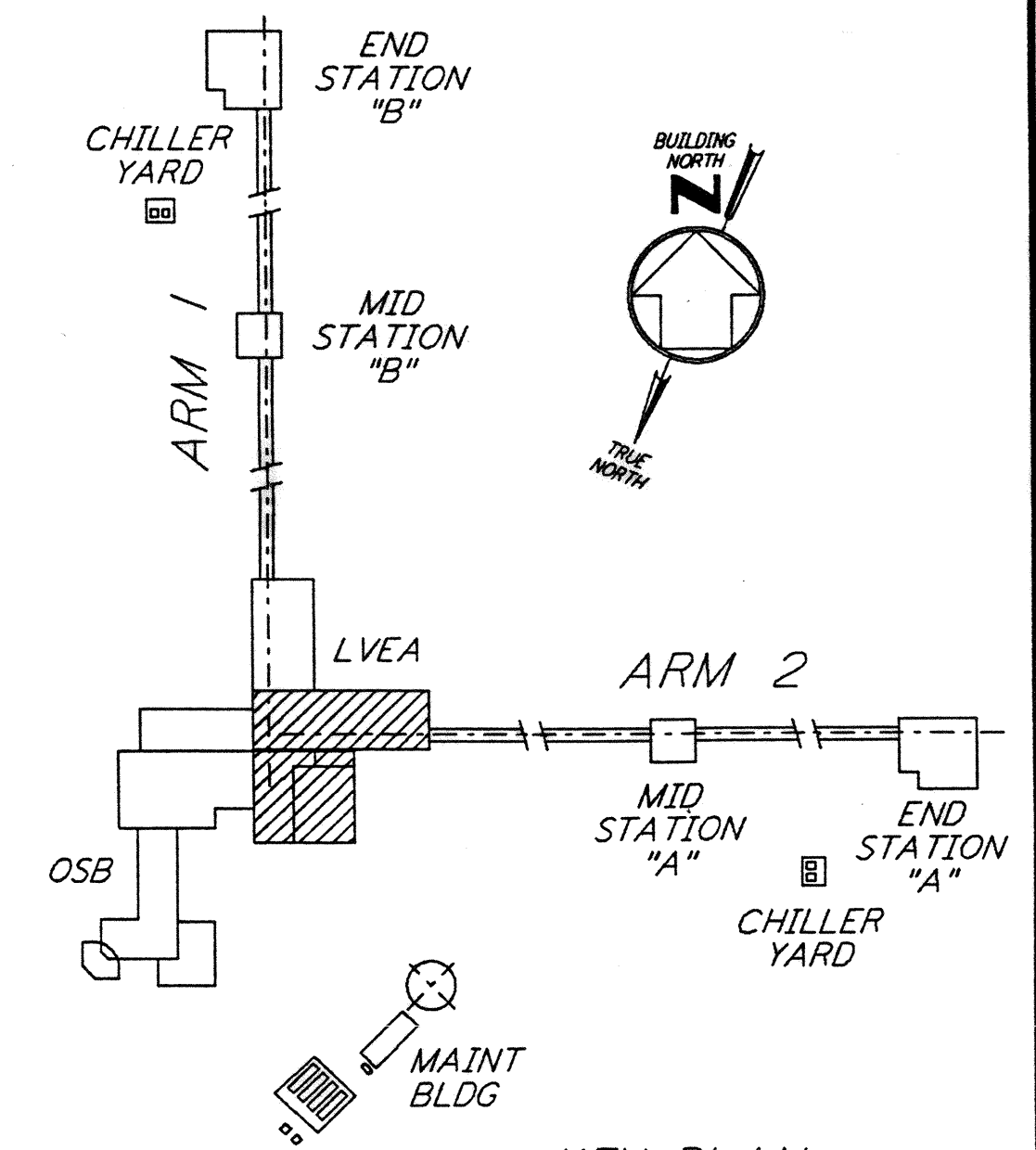
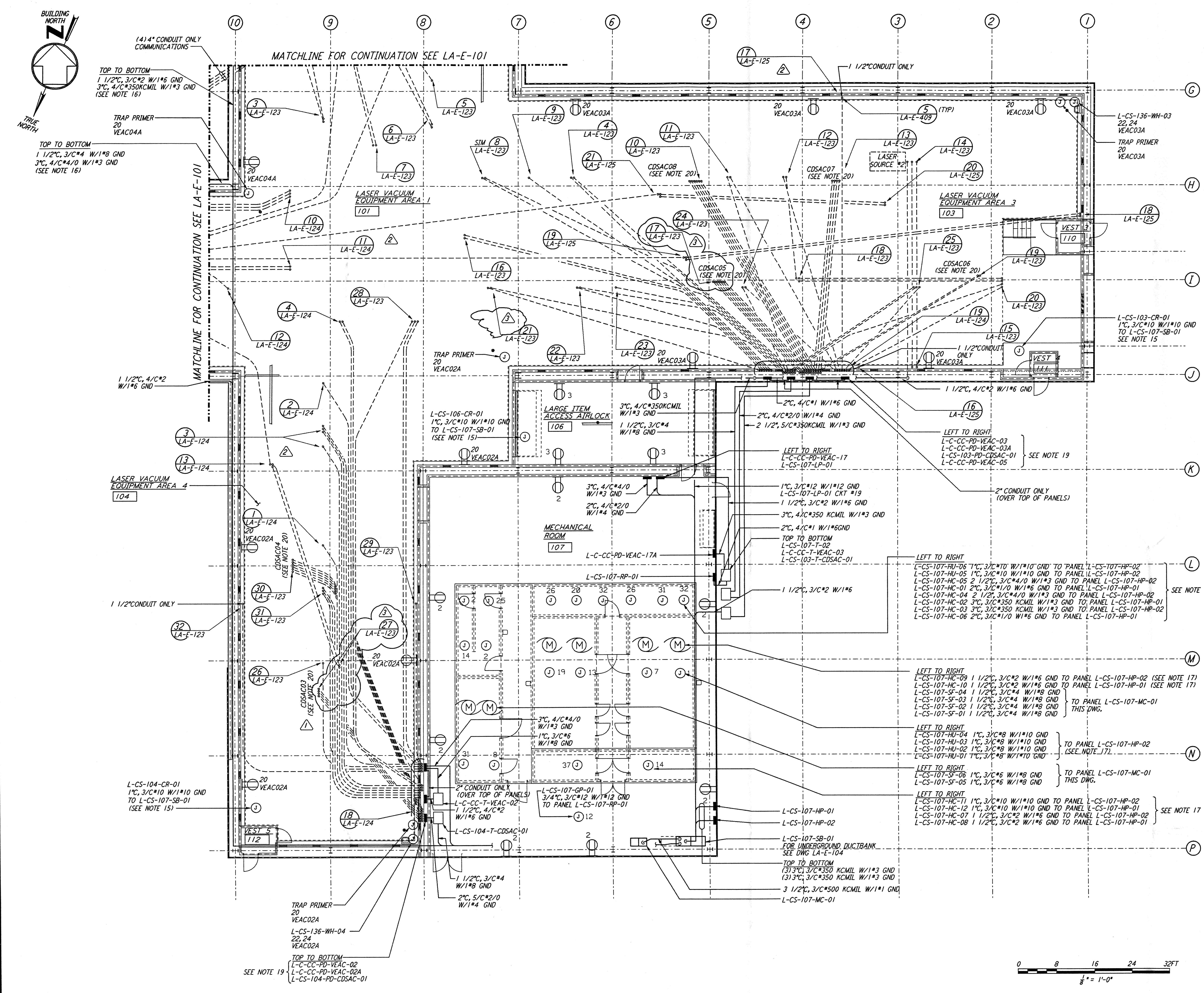
- FOR SYMBOLS SEE DWG. LA-E-002.
- FOR ABBREVIATIONS SEE DWG. LA-E-001.
- FOR RECEPTACLE SCHEDULE SEE DWG. LA-E-007.
- FOR RECEPTACLE PANEL SCHEDULE SEE DWG. LA-E-117 THRU 121.
- ALL CONDUIT RUNS ARE SHOWN DIAGRAMMATICALLY ONLY. FIELD SHALL COORDINATE PRIOR TO INSTALLATION TO AVOID CONFLICT.
- WIRES FOR RECEPTACLE CIRCUITS SHALL BE 2/C#12 W/1#12 GND THRU TRAY CABLE IN CONDUIT.
- ALL 120V 1Ø CIRCUITS TO RECEPTACLES SHALL HAVE INDIVIDUAL NEUTRALS. (NO COMMON NEUTRALS).
- EACH THREE PHASE CIRCUIT SHALL HAVE DEDICATED COMMON NEUTRAL AND GROUND.
- ALL RECEPTACLE INSTALLED IN GYPSUM BOARD SHALL BE FLUSH MOUNTED WITH CONCEALED CONDUIT DROP FROM CEILING.
- UNLESS OTHERWISE INDICATED RECEPTACLE ELEVATION SHALL BE 18" FROM FINISH FLOOR.
- NOT USED
- ALL FITTING SHALL BE 1 1/2" TO ALLOW SPACE FOR SPlicing (PER N.E.C. ART 370-16) FIELD SHALL FURNISH ALL REQUIRED REDUCERS.
- CONDUITS SHALL BE SUPPORTED AT INTERVALS OF 10'-0" MAX.
- FOR STANDARD INSTALLATION DETAILS SEE DWG. LA-E-401 TO 409.
- CIRCUITS FOR CRANES ARE FROM PANEL L-CS-107-SB-01 AND SHALL TERMINATE IN A 480V, 3ØAMP, 3 POLE DISCONNECT SWITCH EACH. LOCATION OF DISCONNECT SWITCH SHALL BE AT 54" M. H.
- ROUTE CONDUIT WITHIN WALLS AND ABOVE CRANE.
- ALL CIRCUIT IDENTIFICATIONS AS SHOWN FEEDING THESE DEVICES/LOADS REFERENCE ONLY THE FIRST CIRCUIT/SLOT NUMBERS.
- ALL 120V 1Ø DUPLEX RECEPTACLE CIRCUIT SHOWN IN ROOMS 106 & 107 ARE FROM L-CS-107-RP-01.
- ALL PANELS INDICATED SHALL BE FLUSH MOUNTED ON LVEA WALL. PANELS ARE SHOWN WITHIN WALL SPACE FOR DRAWING CLARITY ONLY.
- ALL CDSAC CONDUIT EMBEDDED WITHIN AND BELOW LVEA FLOOR SLABS SHALL BE 2" IN SIZE AND SPACED ON 4" CENTERS AT STUB-UPS.

LEGEND:

22, 24
 VEAC04A = CIRCUIT NUMBER 22, 24 PANEL L-C-CC-PD-VEAC-04A

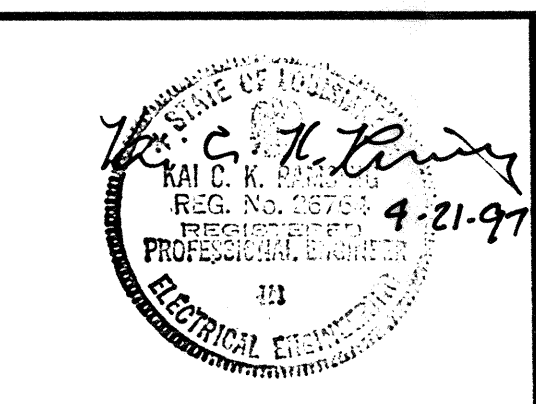
not be reproduced, copied, loaned, exhibited, or used in any other way, except by written consent from **PARSONS** to the borrower.

This document and the design it covers are the property of **PARSONS**. They are loaned only with the borrower's expressed written agreement that they will



NO.	DATE	BY	CHKD	ENGR	PROJ	DESCRIPTION
3	4-21-97	J. G.	KR	TDM		REVISED FOR CDS AND VAC. EQUIP.
2	4-4-97	M. M.	KR	TDM		GENERAL REVISIONS
1	3-21-97	J. G.	B. K.	KCR	TDM	GENERAL REVISIONS

ISSUED FOR CONSTRUCTION	DATE	BY
DRAWN	M. M.	11-15-96
CHECKED	J. C. L.	7-24-96
ENGINEER	K. C. R.	10-25-96
PROJ	T. D. M.	11-15-96



PARSONS
 100 WEST WALNUT STREET
 PASADENA, CALIFORNIA

LIGO
 CALIFORNIA INSTITUTE OF TECHNOLOGY
 MASSACHUSETTS INSTITUTE OF TECHNOLOGY

LASER INTERFEROMETER
 GRAVITATIONAL-WAVE OBSERVATORY
 SITE NO. 2 - LIVINGSTON, LOUISIANA

TITLE	CONTRACT NUMBER	PROJECT NUMBER
ELECTRICAL CORNER STATION LVEA AREAS 101, 103, 104 RECEPTACLE & POWER PLAN	AS NOTED PP150969	8094
SHEET NUMBER	REVISIONS	
LA-E-100	3	