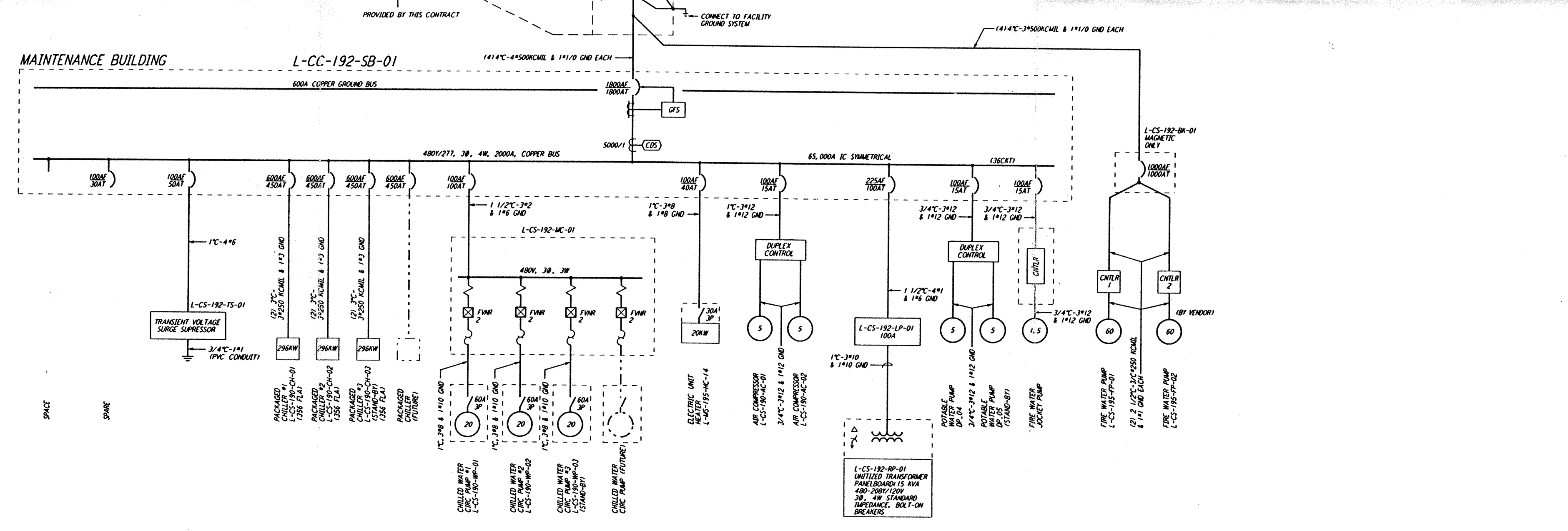
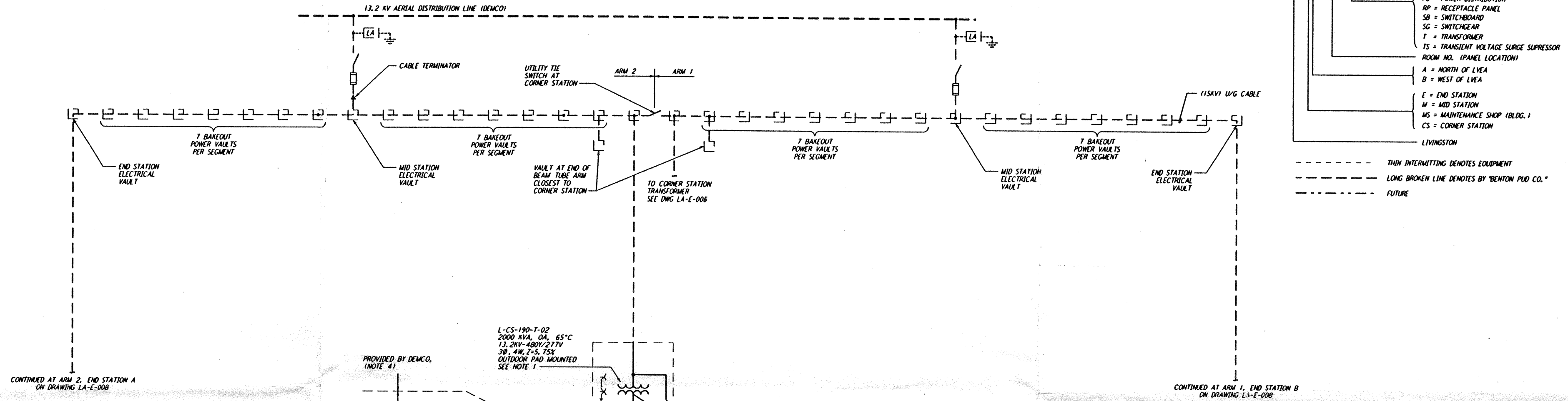


This document and the design it covers are the property of PARSONS. They are loaned only with the borrower's expressed written agreement that they will not be reproduced, copied, loaned, exhibited, or used in any other way, except by written consent from PARSONS to the borrower.

This document and the design it covers are the property of PARSONS. They are loaned only with the borrower's expressed written agreement that they will not be reproduced, copied, loaned, exhibited, or used in any other way, except by written consent from PARSONS to the borrower.

- NOTES:**
1. TRANSFORMER L-MS-190-T-02 SHALL BE SIZED PER N.E.C. ARTICLE 450-30.
 2. FOR ABBREVIATIONS AND ACRONYMS SEE DWG LA-E-001.
 3. FOR ONE-LINE DIAGRAMS SYMBOLS SEE DWG LA-E-004.
 4. ALL 13.2KV CABLE, GEAR, VAULTS AND TRANSFORMERS BY OTHERS.
 5. ALL CIRCUIT BREAKERS SHALL BE PROVIDED WITH LOCKING/LOCKABLE ACCESSORIES TO ENSURE THAT CIRCUITS ARE ENERGIZED BY AUTHORIZED PERSONNEL ONLY.
 6. DISTRIBUTION AND LIGHTING PANELS SHALL BE FURNISHED WITH LOCKABLE DOORS. CIRCUIT BREAKERS SHALL BE PROVIDED WITH LOCKING/LOCKABLE ACCESSORIES TO ENSURE THAT CIRCUITS ARE ENERGIZED BY AUTHORIZED PERSONNEL ONLY.

- LEGEND:**
- L - EA - 303 - DP - 01
- SEQUENTIAL NUMBER
 - EA = BREAKER PANEL
 - DP = DISTRIBUTION PANEL
 - HP = HEATER PANEL
 - LP = LIGHTING PANEL
 - MC = MOTOR CONTROL CENTER
 - PD = POWER DISTRIBUTION
 - RP = RECEPTACLE PANEL
 - SB = SWITCHBOARD
 - SG = SWITCHGEAR
 - T = TRANSFORMER
 - TS = TRANSIENT VOLTAGE SURGE SUPPRESSOR
 - ROOM NO. (PANEL LOCATION)
 - A = NORTH OF LVEA
 - B = WEST OF LVEA
 - E = END STATION
 - M = MID STATION
 - MS = MAINTENANCE SHOP (BLDG.)
 - CS = CORNER STATION
 - LIVINGSTON
- THIN INTERMITTING DENOTES EQUIPMENT
 - - - LONG BROKEN LINE DENOTES BY "BENTON PUD CO."
 - - - FUTURE



NO.	DATE	BY	CHKD	ENGR	PROJ	DESCRIPTION
C	7-24-96	AMW	JCL	JCL	TOM	ISSUED FOR BID
B	6-14-96	AMW	JCL	KR	TOM	FINAL DESIGN REVIEW
A	10-31-95				TOM	PRELIMINARY DESIGN REVIEW

DRAWN	AM
CHECKED	AM
ENGINEER	
PROJ	

100 WEST WALNUT STREET
PASADENA, CALIFORNIA

PARSONS

LIGO
CALIFORNIA INSTITUTE OF TECHNOLOGY
MASSACHUSETTS INSTITUTE OF TECHNOLOGY

LASER INTERFEROMETER
GRAVITATIONAL-WAVE OBSERVATORY
SITE NO. 2 - LIVINGSTON, LOUISIANA

ELECTRICAL OVERALL SINGLE LINE DIAGRAM

PP150969 8094

LA-E-005