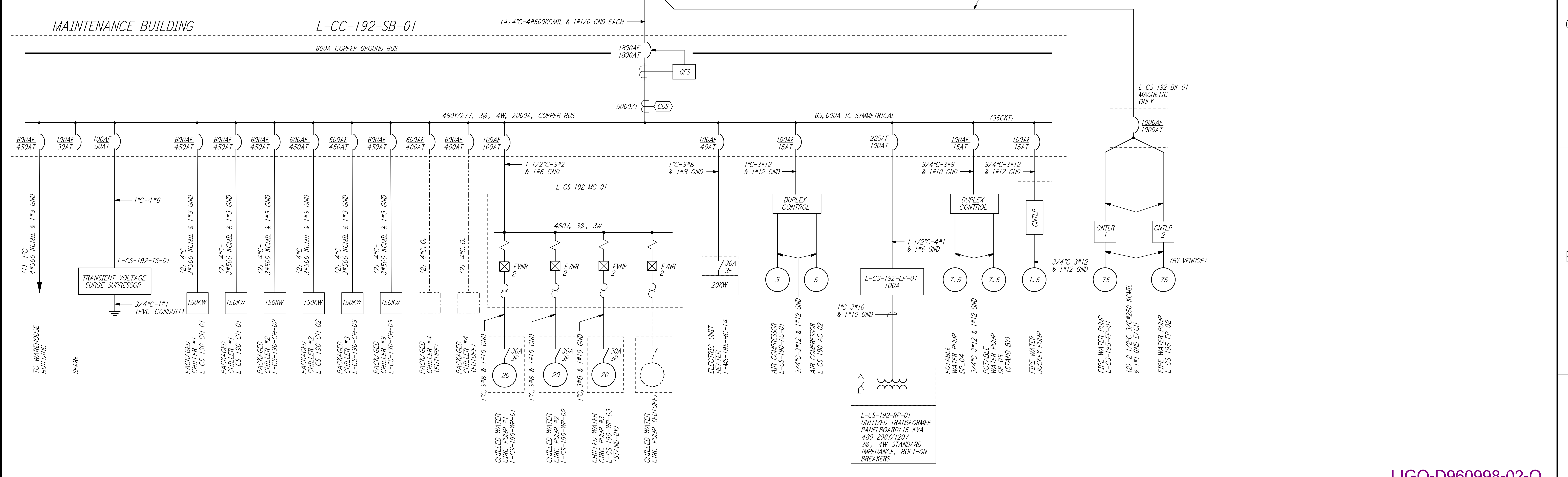
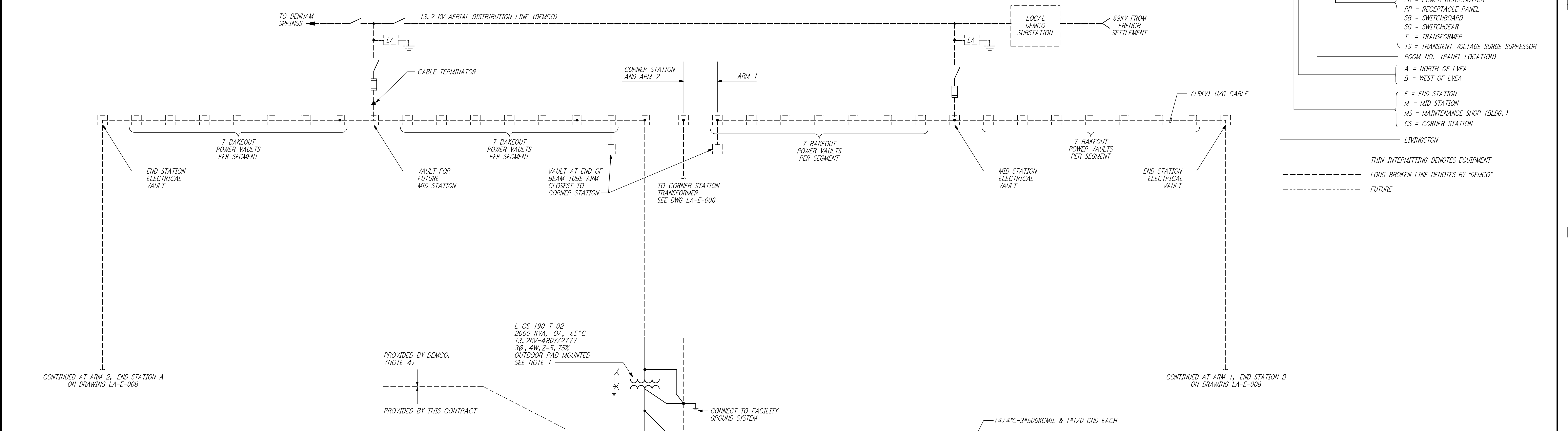


- NOTES:**
1. TRANSFORMER L-CS-190-T-02 SHALL BE SIZED PER N.E.C. ARTICLE 450-3D.
 2. FOR ABBREVIATIONS AND ACRONYMS SEE DWG LA-E-001.
 3. FOR ONE-LINE DIAGRAMS SYMBOLS SEE DWG LA-E-004.
 4. ALL 13.2KV CABLE, GEAR, VAULTS AND TRANSFORMERS BY DEMCO.
 5. ALL CIRCUIT BREAKERS SHALL BE PROVIDED WITH LOCKING/LOCKABLE ACCESSORIES TO ENSURE THAT CIRCUITS ARE ENERGIZED BY AUTHORIZED PERSONNEL ONLY.
 6. DISTRIBUTION AND LIGHTING PANELS SHALL BE FURNISHED WITH LOCKABLE DOORS. CIRCUIT BREAKERS SHALL BE PROVIDED WITH LOCKING/LOCKABLE ACCESSORIES TO ENSURE THAT CIRCUITS ARE ENERGIZED BY AUTHORIZED PERSONNEL ONLY.

- LEGEND:**
- L - EA - 303 - DP - 01
 - SEQUENTIAL NUMBER
 - BK = BREAKER PANEL
 - CB = CIRCUIT BREAKER
 - DP = DISTRIBUTION PANEL
 - HP = HEATER PANEL
 - LP = LIGHTING PANEL
 - MC = MOTOR CONTROL CENTER
 - PD = POWER DISTRIBUTION
 - RP = RECEPTACLE PANEL
 - SB = SWITCHBOARD
 - SG = SWITCHGEAR
 - T = TRANSFORMER
 - TS = TRANSIENT VOLTAGE SURGE SUPPRESSOR
 - ROOM NO. (PANEL LOCATION)
 - A = NORTH OF LVEA
 - B = WEST OF LVEA
 - E = END STATION
 - M = MID STATION
 - MS = MAINTENANCE SHOP (BLDG.)
 - CS = CORNER STATION
 - LIVINGSTON
- THIN INTERMITTING DENOTES EQUIPMENT
 - - - LONG BROKEN LINE DENOTES BY 'DEMCO'
 - - - - - FUTURE



This document and the design it covers are the property of PARSONS. They are loaned only with the borrower's expressed written agreement that they will not be reproduced, copied, loaned, exhibited, or used in any other way, except by written consent from PARSONS to the borrower.

NO.	DATE	BY	CHKD	ENGR	PROJ	DESCRIPTION
2	5-21-99	AO				ISSUED AS REVISED AS-BUILT
1	8-7-98	JE	AK	AG	MDW	ISSUED FOR AS-BUILT

ISSUED FOR CONSTRUCTION	DATE	BY
ISSUED FOR CONSTRUCTION	11-15-96	M. M.
CHECKED	7-24-96	JCL
ENGINEER	10-25-96	KCR
PROJ	11-15-96	T. D. M.

AS-BUILT DRAWINGS

100 WEST WALNUT STREET
PASADENA, CALIFORNIA

CALIFORNIA INSTITUTE OF TECHNOLOGY
MASSACHUSETTS INSTITUTE OF TECHNOLOGY

LIGO-D960998-02-O			
LASER INTERFEROMETER GRAVITATIONAL-WAVE OBSERVATORY SITE NO. 2 - LIVINGSTON, LOUISIANA			
TITLE	SCALE	CONTRACT NUMBER	PROJECT NUMBER
ELECTRICAL OVERALL SINGLE LINE DIAGRAM	NONE	PPI50969	8094
SHEET NUMBER		REVISIONS	
LA-E-005		2	