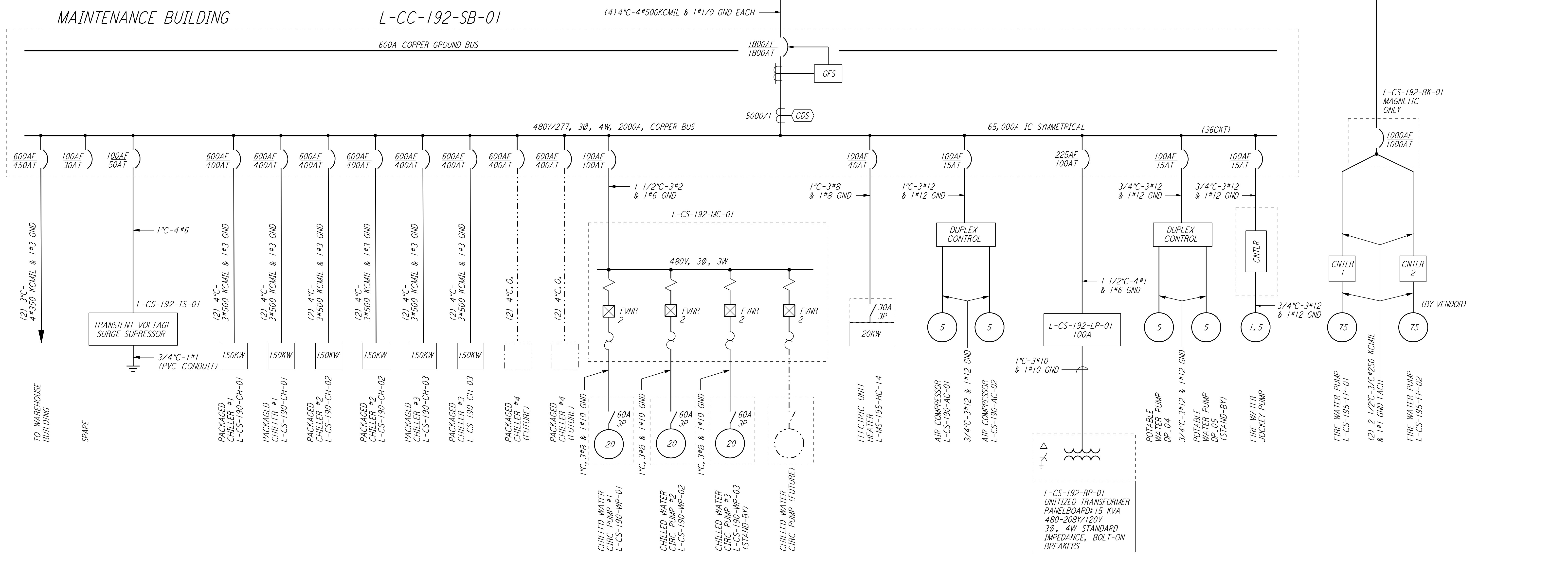
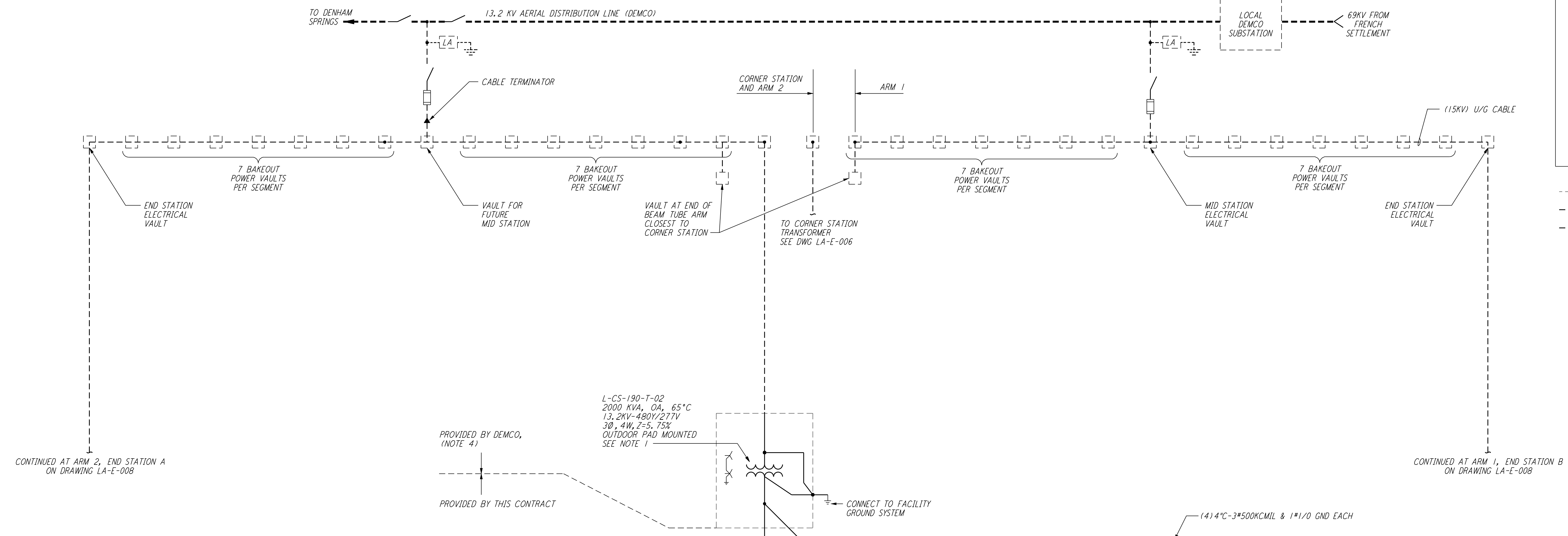


- NOTES:**
1. TRANSFORMER L-CS-190-T-02 SHALL BE SIZED PER N.E.C. ARTICLE 450-3D.
  2. FOR ABBREVIATIONS AND ACRONYMS SEE DWG LA-E-001.
  3. FOR ONE-LINE DIAGRAMS SYMBOLS SEE DWG LA-E-004.
  4. ALL 13.2KV CABLE, GEAR, VAULTS AND TRANSFORMERS BY DEMCO.
  5. ALL CIRCUIT BREAKERS SHALL BE PROVIDED WITH LOCKING/LOCKABLE ACCESSORIES TO ENSURE THAT CIRCUITS ARE ENERGIZED BY AUTHORIZED PERSONNEL ONLY.
  6. DISTRIBUTION AND LIGHTING PANELS SHALL BE FURNISHED WITH LOCKABLE DOORS. CIRCUIT BREAKERS SHALL BE PROVIDED WITH LOCKING/LOCKABLE ACCESSORIES TO ENSURE THAT CIRCUITS ARE ENERGIZED BY AUTHORIZED PERSONNEL ONLY.

- LEGEND:**
- L - EA - 303 - DP - 01
  - SEQUENTIAL NUMBER
  - BK = BREAKER PANEL
  - CB = CIRCUIT BREAKER
  - DP = DISTRIBUTION PANEL
  - HP = HEATER PANEL
  - LP = LIGHTING PANEL
  - MC = MOTOR CONTROL CENTER
  - PD = POWER DISTRIBUTION
  - RP = RECEPTACLE PANEL
  - SB = SWITCHBOARD
  - SG = SWITCHGEAR
  - T = TRANSFORMER
  - TS = TRANSIENT VOLTAGE SURGE SUPPRESSOR
  - ROOM NO. (PANEL LOCATION)
  - A = NORTH OF LVEA
  - B = WEST OF LVEA
  - E = END STATION
  - M = MID STATION
  - MS = MAINTENANCE SHOP (BLDG.)
  - CS = CORNER STATION
  - LIVINGSTON
  - THIN INTERMITTING DENOTES EQUIPMENT
  - LONG BROKEN LINE DENOTES BY "DEMCO"
  - FUTURE



not be reproduced, copied, loaned, exhibited, or used in any other way, except by written consent from PARSONS to the borrower.

This document and the design it covers are the property of PARSONS. They are loaned only with the borrower's expressed written agreement that they will not be reproduced, copied, loaned, exhibited, or used in any other way, except by written consent from PARSONS to the borrower.

NO.	DATE	BY	CHKD	ENGR	PROJ	DESCRIPTION
1	8-7-98	JE				ISSUED FOR AS-BUILT

ISSUED FOR CONSTRUCTION		
DRAWN	M. M.	11-15-96
CHECKED	JCL	7-24-96
ENGINEER	KCR	10-25-96
PROJ	T. D. M.	11-15-96

**AS-BUILT DRAWINGS**

**PARSONS**  
 100 WEST WALNUT STREET  
 PASADENA, CALIFORNIA

**LIGO**  
 CALIFORNIA INSTITUTE OF TECHNOLOGY  
 MASSACHUSETTS INSTITUTE OF TECHNOLOGY

LASER INTERFEROMETER  
 GRAVITATIONAL-WAVE OBSERVATORY  
 SITE NO. 2 - LIVINGSTON, LOUISIANA

TITLE	SCALE	CONTRACT NUMBER	PROJECT NUMBER
ELECTRICAL OVERALL SINGLE LINE DIAGRAM	NONE	PP150969	8094
SHEET NUMBER	REVISIONS		
LA-E-005	1		

*Note 1, LIGO, 02/12/99 08:52:31 AM*  
LIGO-D960998-01-O