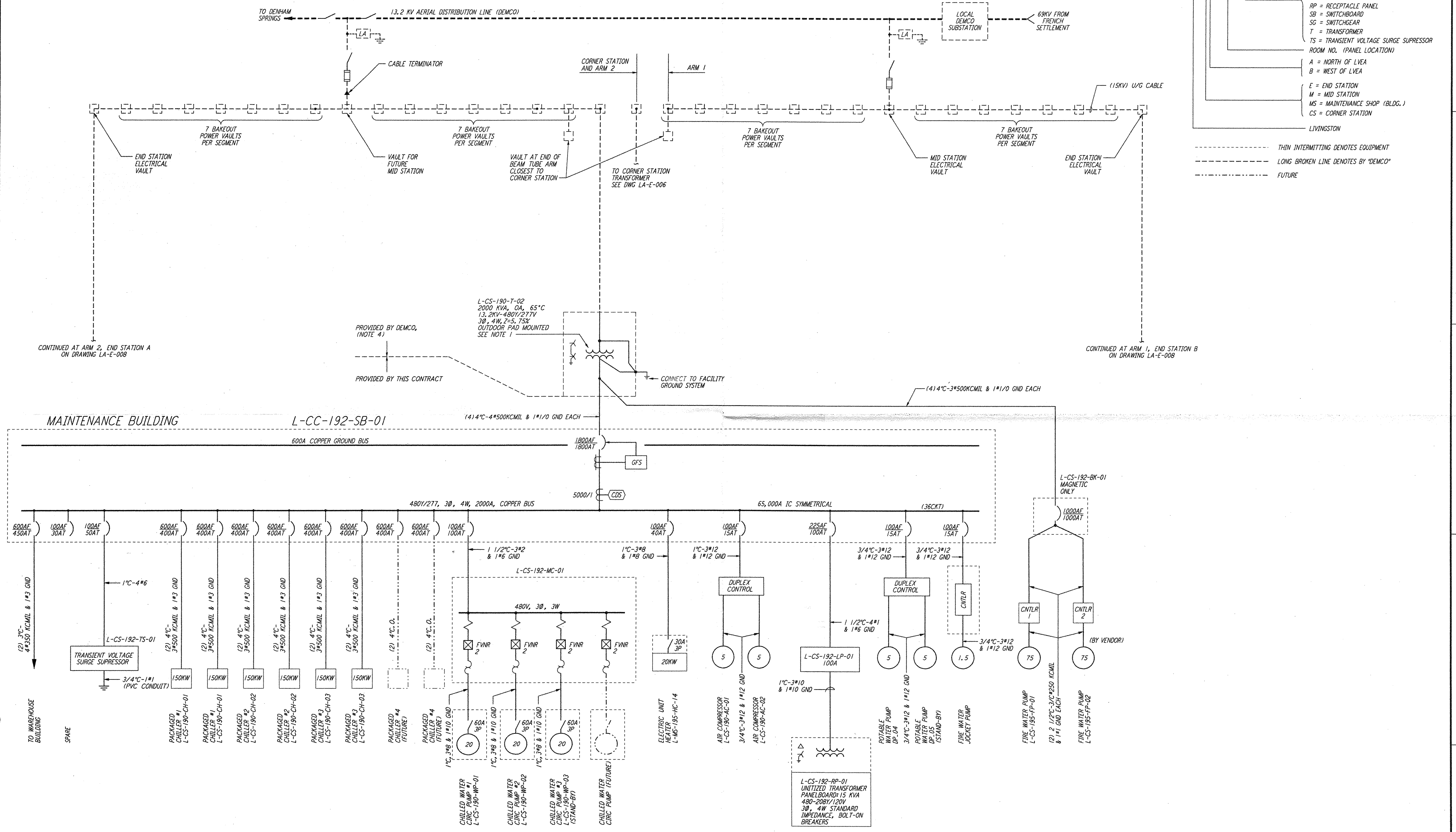


not be reproduced, copied, loaned, exhibited, or used in any other way, except by written consent from PARSONS to the borrower.

- NOTES:**
1. TRANSFORMER L-CS-190-T-02 SHALL BE SIZED PER N.E.C. ARTICLE 450-30.
  2. FOR ABBREVIATIONS AND ACRONYMS SEE DWG LA-E-001.
  3. FOR ONE-LINE DIAGRAMS SYMBOLS SEE DWG LA-E-004.
  4. ALL 13.2KV CABLE, GEAR, VAULTS AND TRANSFORMERS BY DEMCO.
  5. ALL CIRCUIT BREAKERS SHALL BE PROVIDED WITH LOCKING/LOCKABLE ACCESSORIES TO ENSURE THAT CIRCUITS ARE ENERGIZED BY AUTHORIZED PERSONNEL ONLY.
  6. DISTRIBUTION AND LIGHTING PANELS SHALL BE FURNISHED WITH LOCKABLE DOORS. CIRCUIT BREAKERS SHALL BE PROVIDED WITH LOCKING/LOCKABLE ACCESSORIES TO ENSURE THAT CIRCUITS ARE ENERGIZED BY AUTHORIZED PERSONNEL ONLY.

- LEGEND:**
- L - EA - 303 - DP - 01
  - SEQUENTIAL NUMBER
  - BK = BREAKER PANEL
  - CB = CIRCUIT BREAKER
  - DP = DISTRIBUTION PANEL
  - HP = HEATER PANEL
  - LP = LIGHTING PANEL
  - MC = MOTOR CONTROL CENTER
  - PD = POWER DISTRIBUTION
  - RP = RECEPTACLE PANEL
  - SB = SWITCHBOARD
  - SG = SWITCHGEAR
  - T = TRANSFORMER
  - TS = TRANSIENT VOLTAGE SURGE SUPPRESSOR
  - ROOM NO. (PANEL LOCATION)
  - A = NORTH OF LVEA
  - B = WEST OF LVEA
  - E = END STATION
  - M = MID STATION
  - MS = MAINTENANCE SHOP (BLDG.)
  - CS = CORNER STATION
  - LIVINGSTON
  - THIN INTERMITTING DENOTES EQUIPMENT
  - LONG BROKEN LINE DENOTES "DEMCO"
  - FUTURE



this document and the design it covers are the property of PARSONS. They are loaned only with the borrower's expressed written agreement that they will not be reproduced, copied, loaned, exhibited, or used in any other way, except by written consent from PARSONS to the borrower.

LIGO-D960998-01-0

ISSUED FOR CONSTRUCTION	
DRAWN	M. M. 11-15-96
CHECKED	JCL 7-24-96
ENGINEER	KCR 10-25-96
PROJ	T. D. M. 11-15-96

**AS-BUILT DRAWINGS**

**PARSONS**

100 WEST WALNUT STREET  
PASADENA, CALIFORNIA

**LIGO**

CALIFORNIA INSTITUTE OF TECHNOLOGY  
MASSACHUSETTS INSTITUTE OF TECHNOLOGY

LASER INTERFEROMETER  
GRAVITATIONAL-WAVE OBSERVATORY  
SITE NO. 2 - LIVINGSTON, LOUISIANA

TITLE	ELECTRICAL OVERALL SINGLE LINE DIAGRAM	
SCALE	NONE	CONTRACT NUMBER PPI50969
PROJECT NUMBER	8094	
SHEET NUMBER	LA-E-005	

NO.	DATE	BY	CHKD	ENGR	PROJ	DESCRIPTION
1	8-7-98	JE	AK	AG	WW	ISSUED FOR AS-BUILT