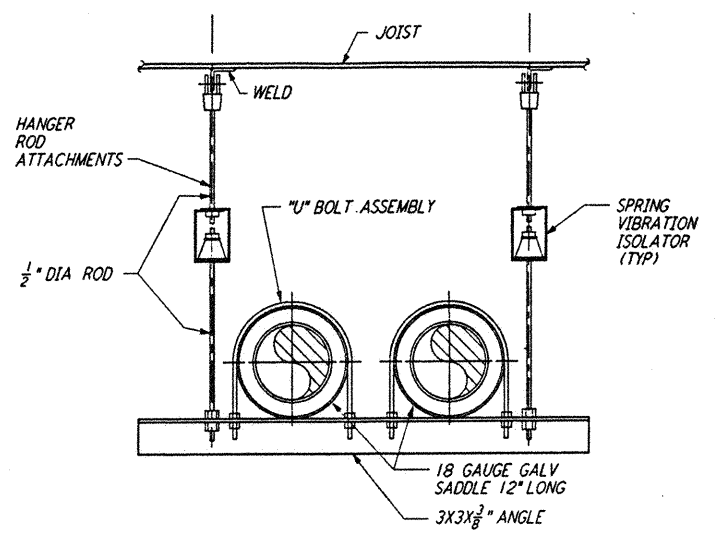
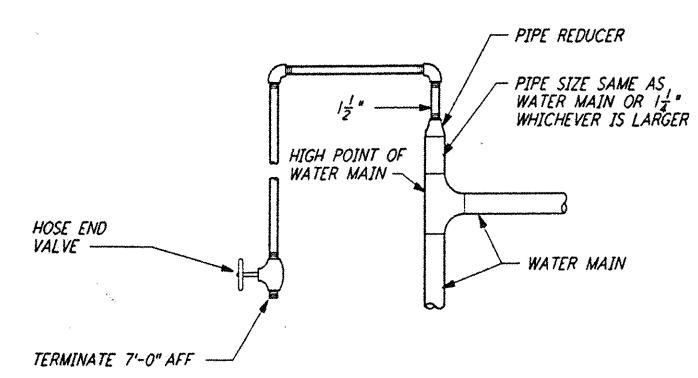


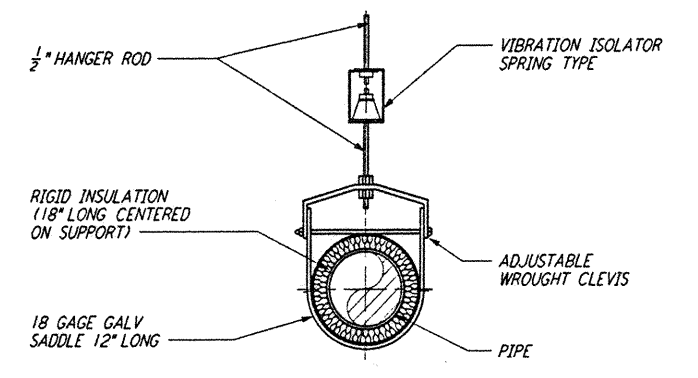
TYPICAL BASE ELBOW SUPPORT 1 REF  
 NTS LA-H-412



PIPE HANGER - TRAPEZE 2 REF  
 NTS LA-H-412



MANUAL AIR VENT 3 REF  
 NTS LA-H-412



PIPE HANGER - SINGLE PIPE 4 REF  
 NTS LA-H-412

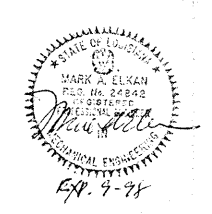
NOTES:  
 1. FOR LEGEND, ABBREVIATIONS AND GENERAL NOTES SEE SHEETS LA-H-001 AND LA-H-002.

not be reproduced, copied, loaned, exhibited, or used in any other way, except by written consent from PARSONS to the borrower.

This document and the design it covers are the property of PARSONS. They are loaned only with the borrower's expressed written agreement that they will

NO.	DATE	BY	CHKD	ENGR	PROJ	DESCRIPTION

ISSUED FOR CONSTRUCTION	
DRAWN	CLP 11-15-96
CHECKED	YTB 10-25-96
ENGINEER	AA 10-23-96
PROJ	SDPA 11/15/96



**PARSONS**  
 100 WEST WALNUT STREET  
 PASADENA, CALIFORNIA

**LIGO**  
 CALIFORNIA INSTITUTE OF TECHNOLOGY  
 MASSACHUSETTS INSTITUTE OF TECHNOLOGY

LASER INTERFEROMETER  
 GRAVITATIONAL-WAVE OBSERVATORY  
 SITE NO. 2 - LIVINGSTON, LOUISIANA

TITLE	SCALE	CONTRACT NUMBER	PROJECT NUMBER
HVAC DETAILS SHEET 2	NONE	PP150969	8094
SHEET NUMBER		REVISIONS	
LA-H-412			