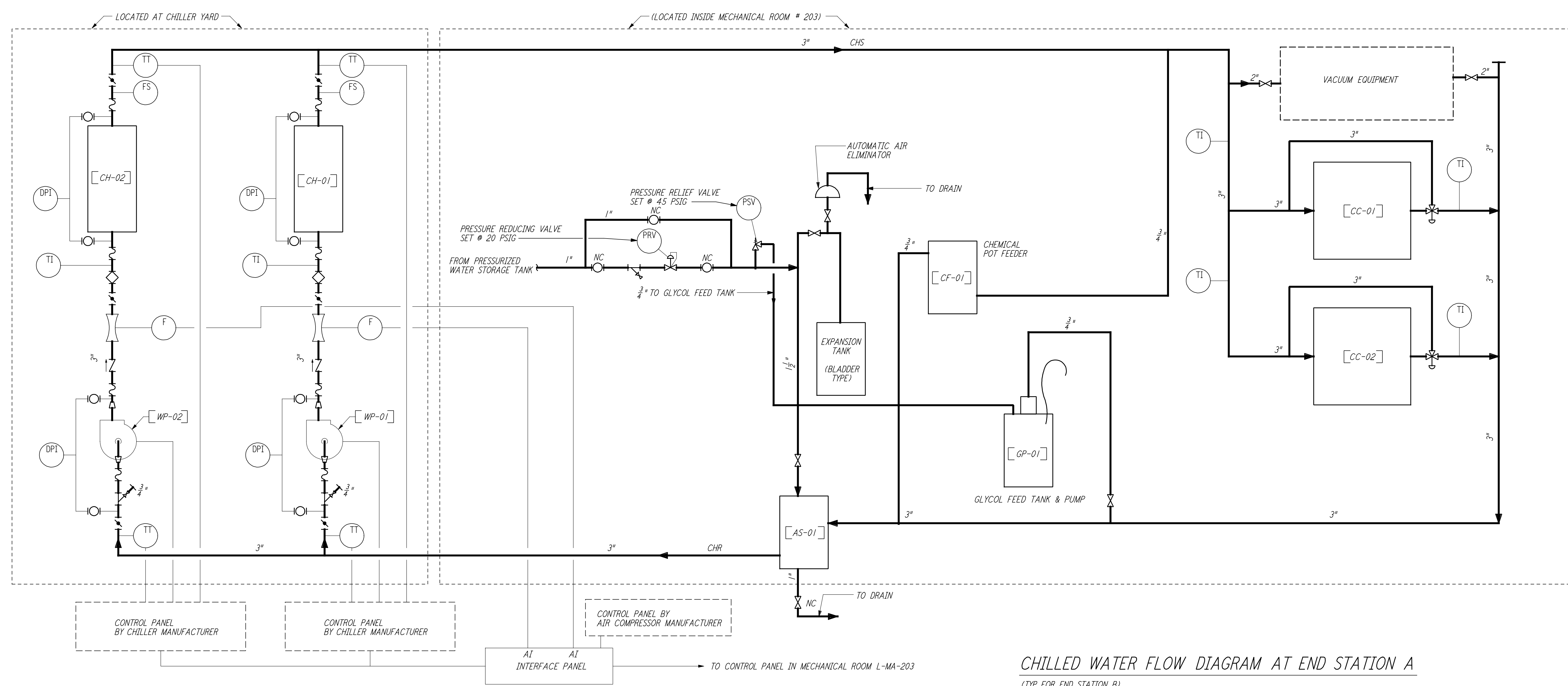


- NOTES:**
- FOR LEGEND, ABBREVIATIONS AND GENERAL NOTES SEE SHEETS LA-H-001 AND LA-H-002.
 - FOR PIPING DETAILS OF COOLING COILS, WATER CHILLERS, PUMPS AND CHEMICAL POT FEEDERS SEE SHEETS LA-H-411 AND LA-H-412.
 - PNEUMATIC VALVES ARE INSTALLED IN ARM 1 ONLY, BUT THE CONTROLS SYSTEM IS NOT FUNCTIONAL, AS DIRECTED UNDER FWD 103R2. ARM 2 END STATION "A" HAS MANUAL VALVES INSTALLED.



This document and the design it covers are the property of PARSONS. They are loaned only with the borrower's expressed written agreement that they will not be reproduced, copied, loaned, exhibited, or used in any other way, except by written consent from PARSONS to the borrower.

This document and the design it covers are the property of PARSONS. They are loaned only with the borrower's expressed written agreement that they will not be reproduced, copied, loaned, exhibited, or used in any other way, except by written consent from PARSONS to the borrower.

NO.	DATE	BY	CHKD	ENGR	PROJ	DESCRIPTION
2	5-21-99	AO				ISSUED AS REVISED AS-BUILT
1	8-7-98	DJB	AA	AA	MDW	ISSUED FOR AS-BUILT

ISSUED FOR CONSTRUCTION	DATE	BY
DRAWN	CLP	11-15-96
CHECKED	MN	10-25-96
ENGINEER	AA	1-23-96
PROJ	TDM	11-15-96

AS-BUILT DRAWINGS



LASER INTERFEROMETER GRAVITATIONAL-WAVE OBSERVATORY SITE NO.2 - LIVINGSTON, LOUISIANA			
TITLE	SCALE	CONTRACT NUMBER	PROJECT NUMBER
HVAC END STATION CHILLED WATER & AIR FLOW DIAGRAMS	NONE	PPI50969	8094
SHEET NUMBER		REVISIONS	
LA-H-221		2	

LIGO-D960988-02-0