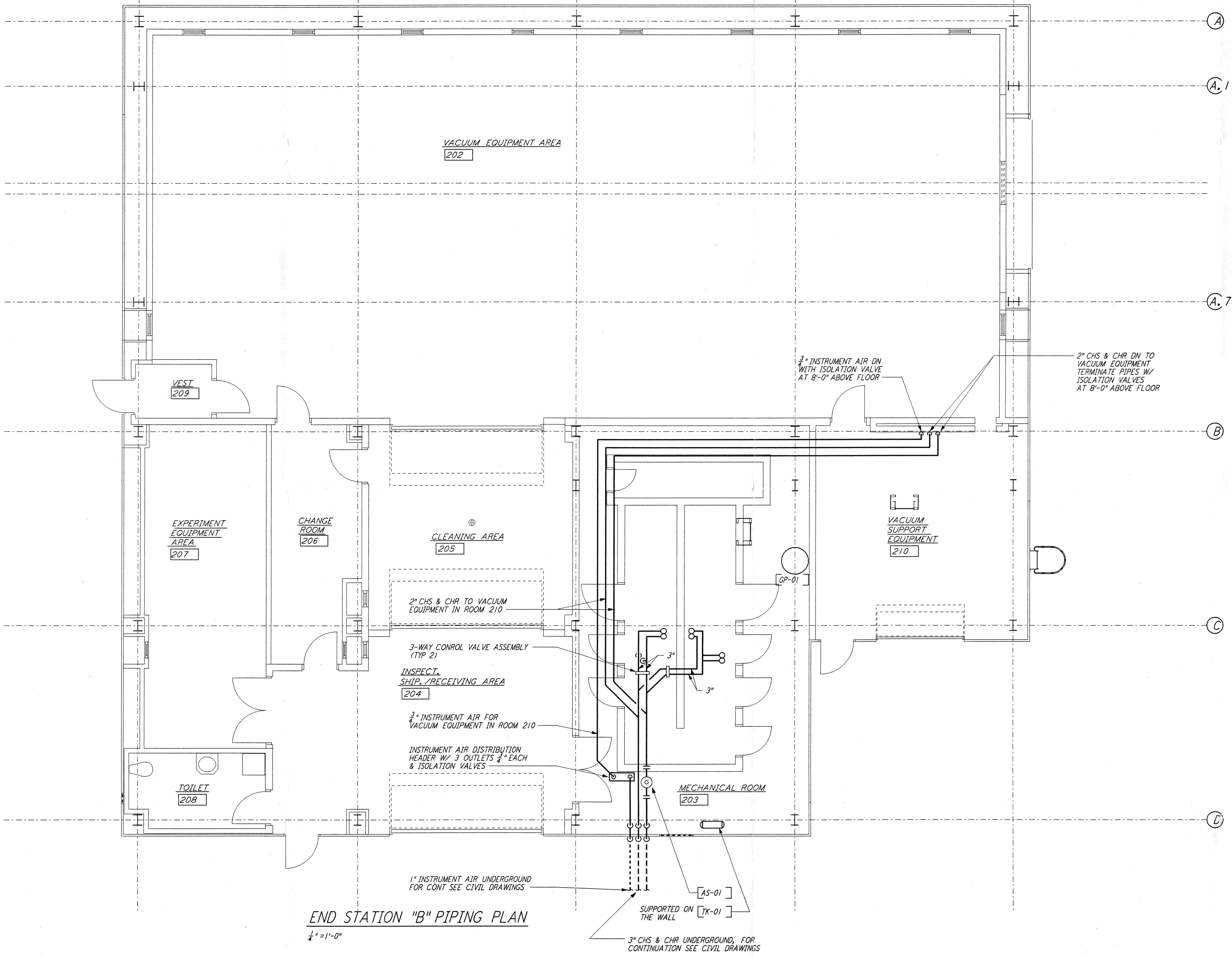


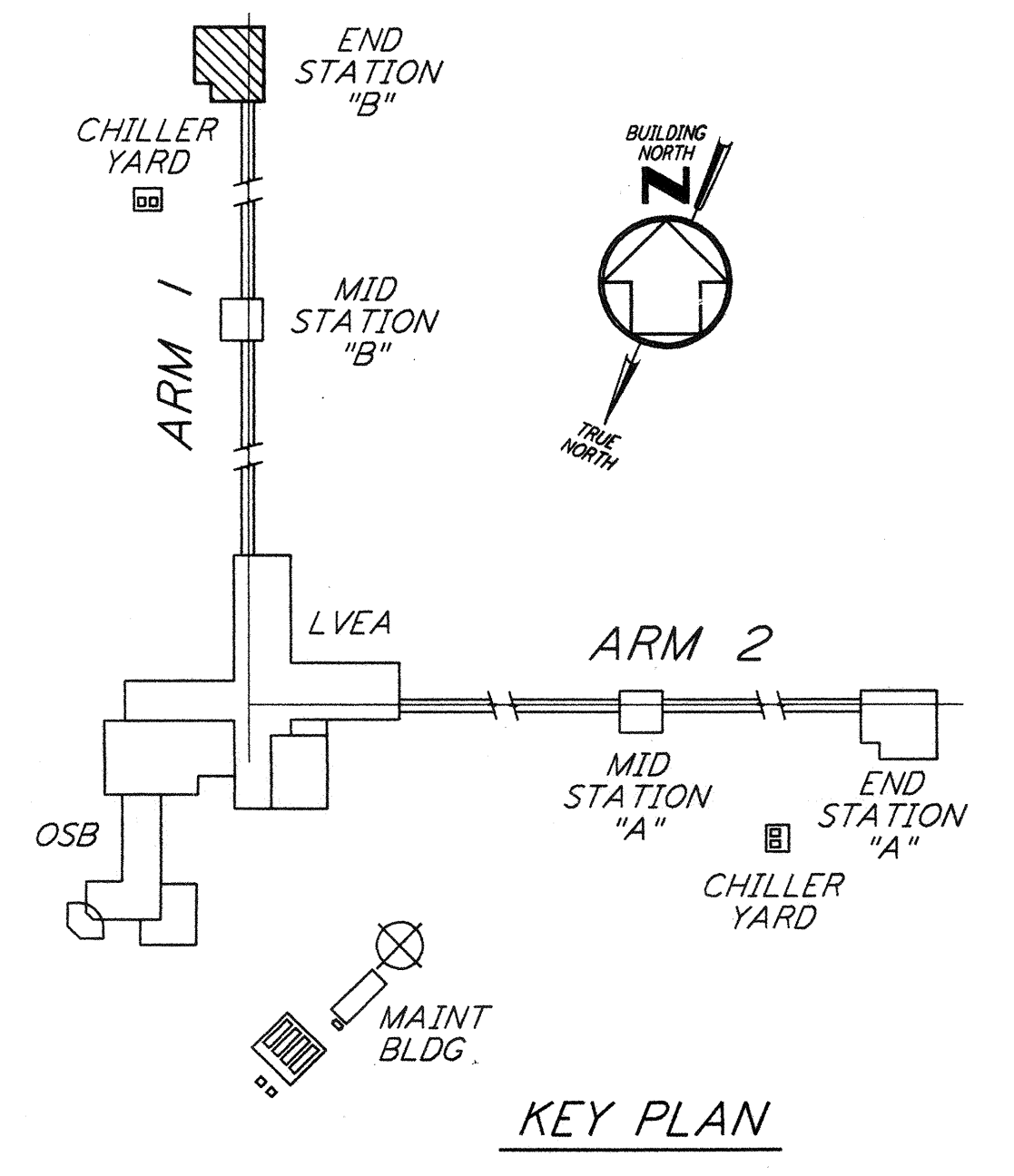
NOTES:
 1. FOR LEGEND, ABBREVIATIONS AND GENERAL NOTES SEE SHEETS LA-H-001 AND LA-H-002.

not be reproduced, copied, loaned, exhibited, or used in any other way, except by written consent from PARSONS to the borrower.

This document and the design it covers are the property of PARSONS. They are loaned only with the borrower's expressed written agreement that they will



END STATION "B" PIPING PLAN
 $\frac{1}{4}'' = 1'-0''$



KEY PLAN
 $\frac{1}{4}'' = 1'-0''$

| NO. | DATE | BY | CHKD | ENGR | PROJ | DESCRIPTION |
|-----|--------|-----|------|------|------|---------------------|
| 1 | 8-7-98 | DJB | AA | AA | | ISSUED FOR AS-BUILT |

| | | |
|-------------------------|-----|----------|
| ISSUED FOR CONSTRUCTION | CLP | 11-15-96 |
| DRAWN | MN | 10-25-96 |
| CHECKED | AA | 1-23-96 |
| ENGINEER | TDM | 11-15-96 |
| PROJ | | |

AS-BUILT DRAWINGS

PARSONS
 100 WEST WALNUT STREET
 PASADENA, CALIFORNIA

LIGO
 CALIFORNIA INSTITUTE OF TECHNOLOGY
 MASSACHUSETTS INSTITUTE OF TECHNOLOGY

LIGO-D960987-01-O
 LASER INTERFEROMETER
 GRAVITATIONAL-WAVE OBSERVATORY
 SITE NO. 2 - LIVINGSTON, LOUISIANA

| | | | |
|--|-----------------|-----------------|----------------|
| TITLE | SCALE | CONTRACT NUMBER | PROJECT NUMBER |
| HVAC END STATION "B" PIPING PLAN | AS NOTED | PP150969 | 8094 |
| SHEET NUMBER | LA-H-216 | | |