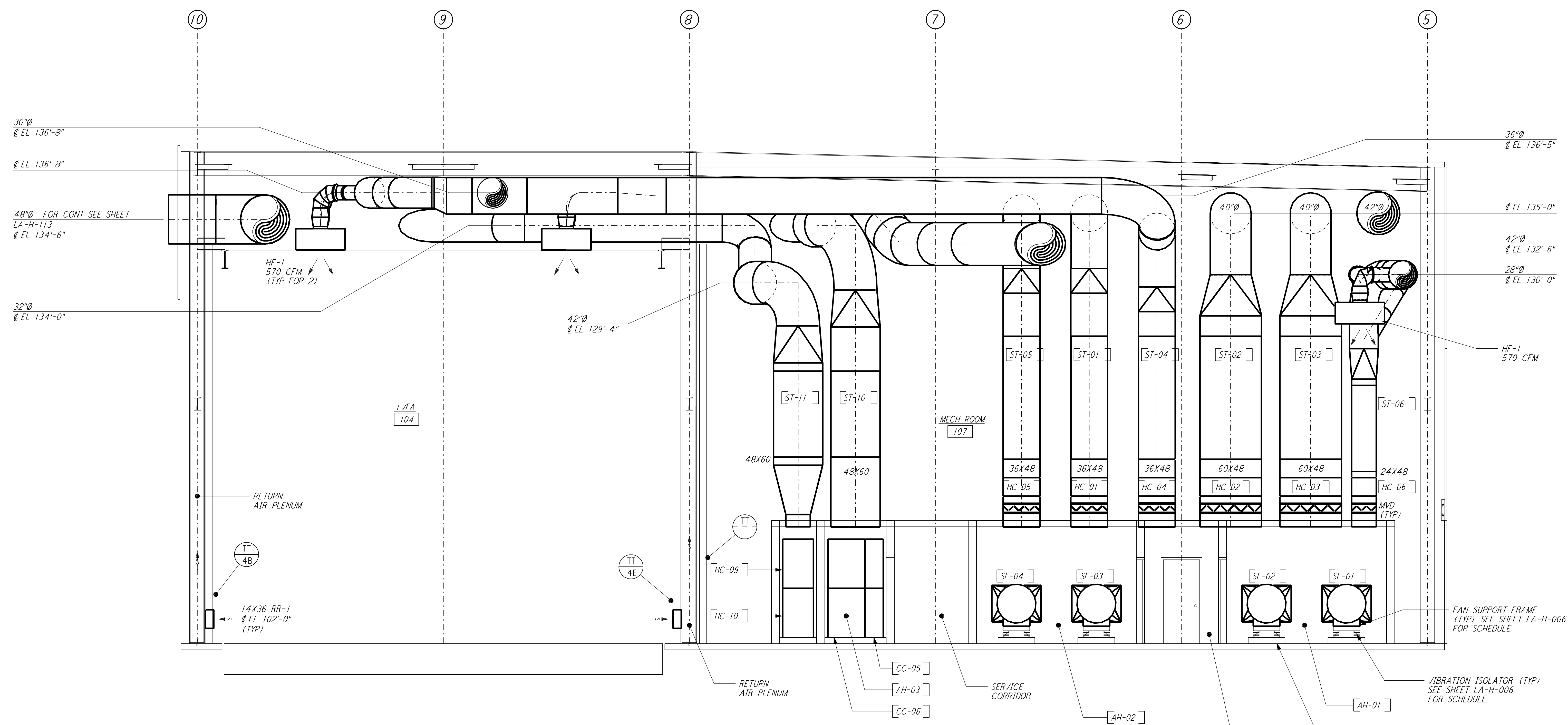
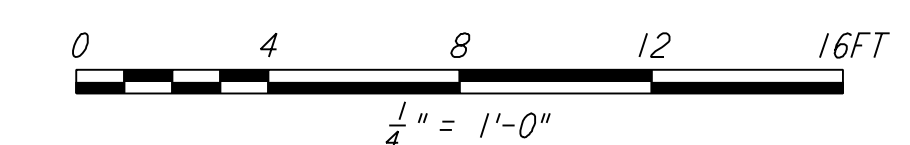


This document and the design it covers are the property of PARSONS. They are loaned only with the borrower's expressed written agreement that they will not be reproduced, copied, loaned, exhibited, or used in any other way, except by written consent from PARSONS to the borrower.



- NOTES:**
1. FOR LEGEND, ABBREVIATIONS AND GENERAL NOTES SEE SHEETS LA-H-001 AND LA-H-002.
  2. PROVIDE HIGH PRESSURE FLEX CONNECTION AT THE POINT OF CONNECTION OF DUCTS AND THE AIR HANDLING UNITS.
  3. SEE FLOOR PLAN (SHEET LA-H-131) FOR LOCATION OF COMPRESSED AIR RECEIVER AND HUMIDIFIERS ABOVE THE AIR HANDLING UNITS.
  4. SEE FLOOR PLAN NOTES FOR DUCT INSULATION.
  5. LOCATE ROOM TEMPERATURE SENSOR /TRANSMITTER FOR THE MECHANICAL ROOM AT 4'-6" ABOVE FINISHED FLOOR LEVEL.

**SECTION A**  
 REF: LA-H-151 LA-H-111  
 1/4" = 1'-0"



**LIGO-D960979-01-O**

NO.	DATE	BY	CHKD	ENGR	PROJ	DESCRIPTION
1	8-7-98	DJB				ISSUED FOR AS-BUILT

ISSUED FOR CONSTRUCTION		
DRAWN	CLP	11-15-96
CHECKED	MN	10-25-96
ENGINEER	AA	1-23-96
PROJ	TDM	11-15-96
<b>AS-BUILT DRAWINGS</b>		

**PARSONS**  
 100 WEST WALNUT STREET  
 PASADENA, CALIFORNIA

**LIGO**  
 CALIFORNIA INSTITUTE OF TECHNOLOGY  
 MASSACHUSETTS INSTITUTE OF TECHNOLOGY

LASER INTERFEROMETER  
 GRAVITATIONAL-WAVE OBSERVATORY  
 SITE NO. 2 - LIVINGSTON, LOUISIANA

TITLE	SCALE	CONTRACT NUMBER	PROJECT NUMBER
HVAC CORNER STATION SECTIONS SHEET 1	AS NOTED	PP150969	8094
SHEET NUMBER		REVISIONS	
<b>LA-H-151</b>			