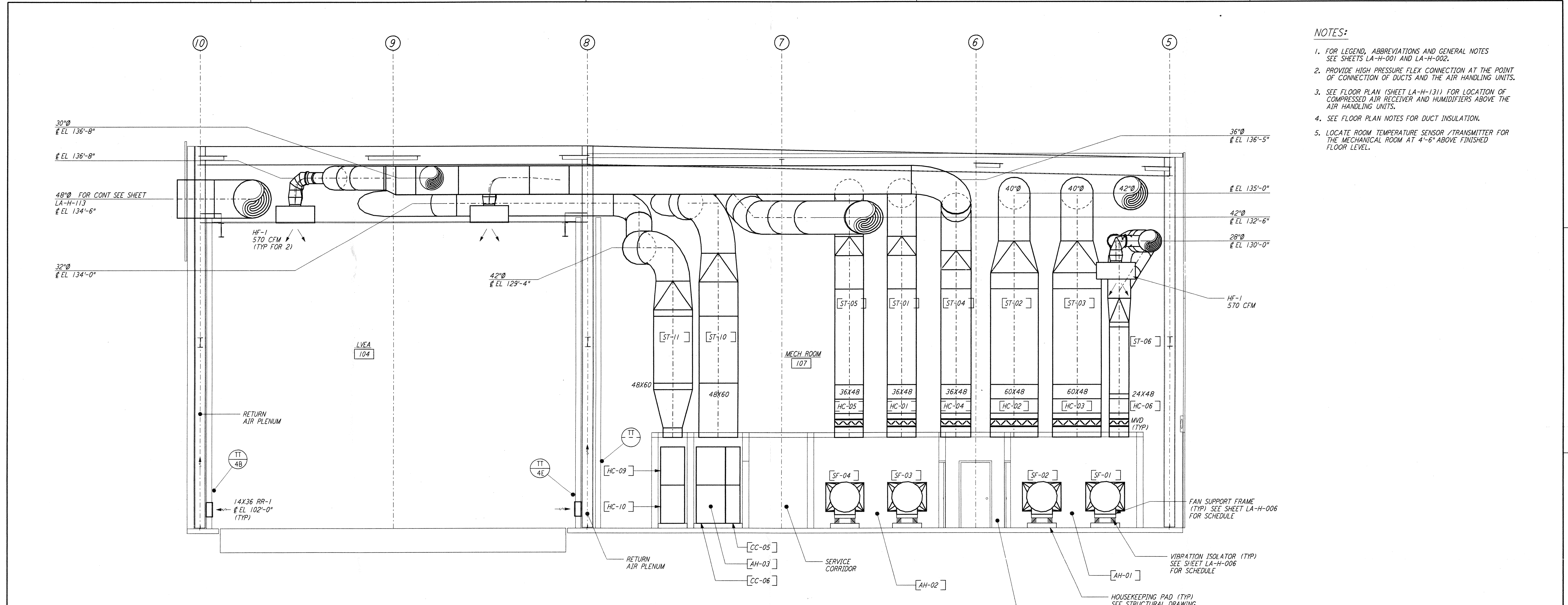
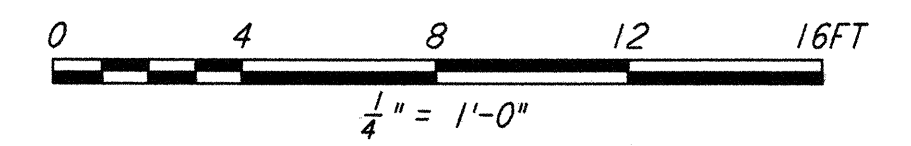


This document and the design it covers are the property of **PARSONS**. They are loaned only with the borrower's expressed written agreement that they will not be reproduced, copied, loaned, exhibited, or used in any other way, except by written consent from **PARSONS** to the borrower.



- NOTES:**
1. FOR LEGEND, ABBREVIATIONS AND GENERAL NOTES SEE SHEETS LA-H-001 AND LA-H-002.
 2. PROVIDE HIGH PRESSURE FLEX CONNECTION AT THE POINT OF CONNECTION OF DUCTS AND THE AIR HANDLING UNITS.
 3. SEE FLOOR PLAN (SHEET LA-H-131) FOR LOCATION OF COMPRESSED AIR RECEIVER AND HUMIDIFIERS ABOVE THE AIR HANDLING UNITS.
 4. SEE FLOOR PLAN NOTES FOR DUCT INSULATION.
 5. LOCATE ROOM TEMPERATURE SENSOR / TRANSMITTER FOR THE MECHANICAL ROOM AT 4'-6" ABOVE FINISHED FLOOR LEVEL.

SECTION A
 1/4" = 1'-0"
 REF: LA-H-151, LA-H-111



NO.	DATE	BY	CHKD	ENGR	PROJ	DESCRIPTION
1	8-7-98	DJB	AA	AA	WJW	ISSUED FOR AS-BUILT

ISSUED FOR CONSTRUCTION	
DRAWN	CLP 11-15-96
CHECKED	MN 10-25-96
ENGINEER	AA 1-23-96
PROJ	TDM 11-15-96
AS-BUILT DRAWINGS	

PARSONS
 100 WEST WALNUT STREET
 PASADENA, CALIFORNIA

LIGO
 CALIFORNIA INSTITUTE OF TECHNOLOGY
 MASSACHUSETTS INSTITUTE OF TECHNOLOGY

LIGO-D960979-01-0
 LASER INTERFEROMETER
 GRAVITATIONAL-WAVE OBSERVATORY
 SITE NO. 2 - LIVINGSTON, LOUISIANA

TITLE	SCALE	CONTRACT NUMBER	PROJECT NUMBER
HVAC CORNER STATION SECTIONS SHEET 1	AS NOTED	PP150969	8094
SHEET NUMBER		REVISIONS	
LA-H-151		▲	