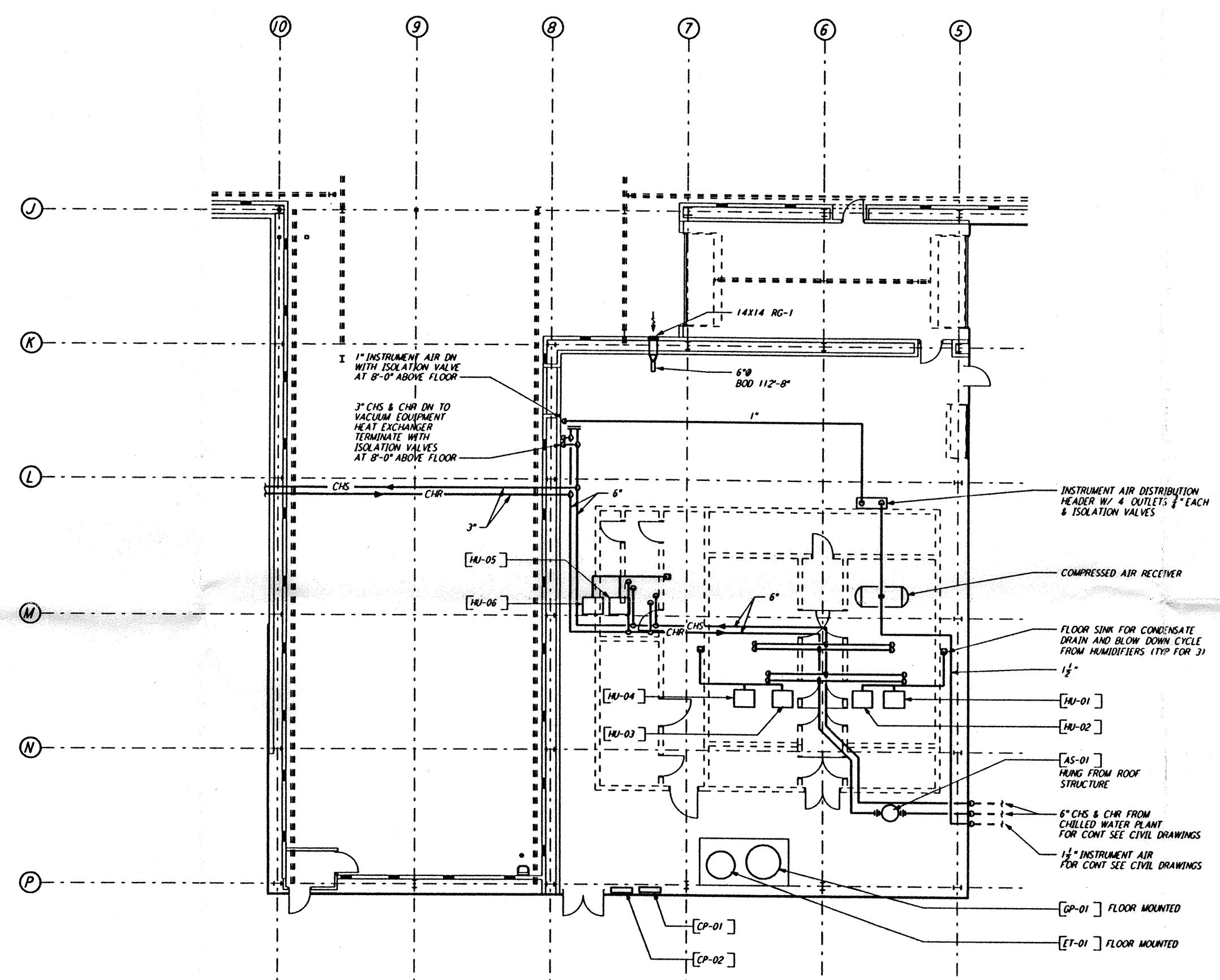
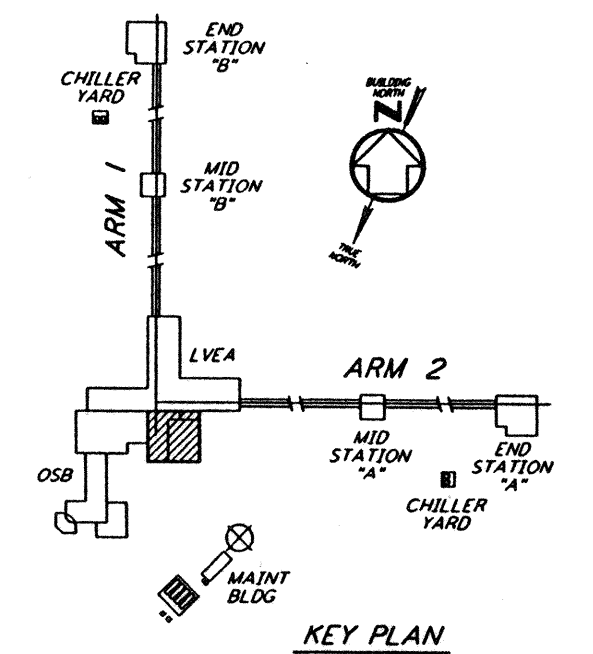


NOTES:
 1. FOR LEGEND, ABBREVIATIONS AND GENERAL NOTES SEE SHEETS LA-H-001 AND LA-H-002.



MECHANICAL ROOM PIPING PLAN
 1/4" = 1'-0"



KEY PLAN
 1/4" = 1'-0"

This document and the design it covers are the property of PARSONS. They are loaned only with the borrower's expressed written agreement that they will not be reproduced, copied, loaned, exhibited, or used in any other way, except by written consent from PARSONS to the borrower.

NO.	DATE	BY	CHKD	ENGR	PROJ	DESCRIPTION
B	7-24-96	CLP	ME	AA	TDM	ISSUED FOR BID
A	6-14-96	CLP	ME	AA	TDM	FINAL DESIGN REVIEW

DRAWN	CLP
CHECKED	
ENGINEER	
PROJ	

PARSONS
 100 WEST WALNUT STREET
 PASADENA, CALIFORNIA

LIGO
 CALIFORNIA INSTITUTE OF TECHNOLOGY
 MASSACHUSETTS INSTITUTE OF TECHNOLOGY

LASER INTERFEROMETER
 GRAVITATIONAL-WAVE OBSERVATORY
 SITE NO. 2 - LIVINGSTON, LOUISIANA

TITLE: HVAC CORNER STATION LVEA & OSB MECHANICAL ROOM PIPING PLAN
 SCALE: AS NOTED
 SHEET NUMBER: PP150969
 PROJECT NUMBER: 8094
LA-H-117

Mon Jul 22 14:43:56 1996 s3-v18b2 J:\PLOTS\QUEUES\18B2\MU17A.PRF