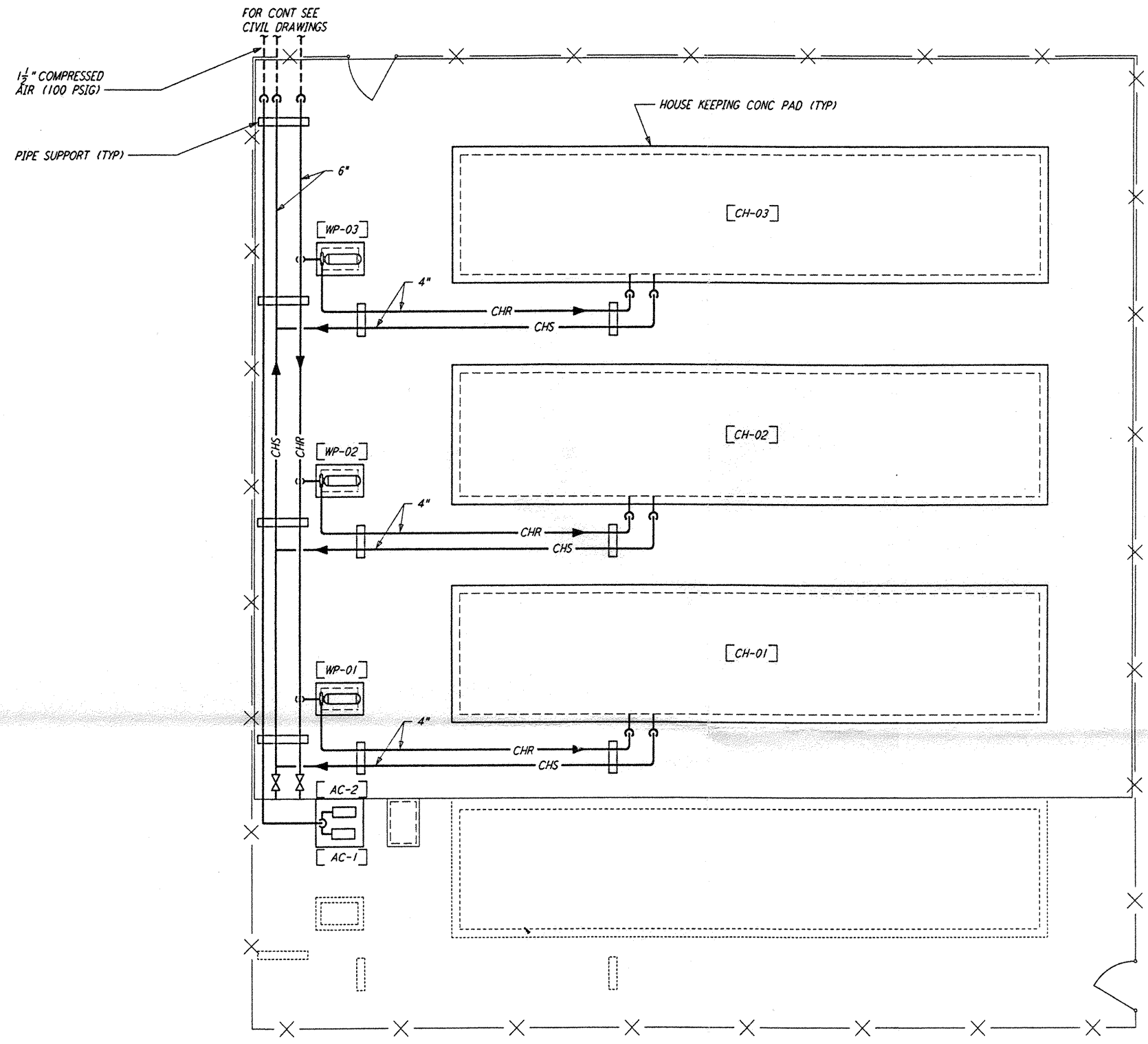
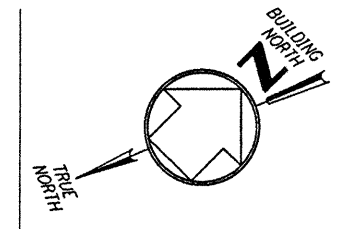
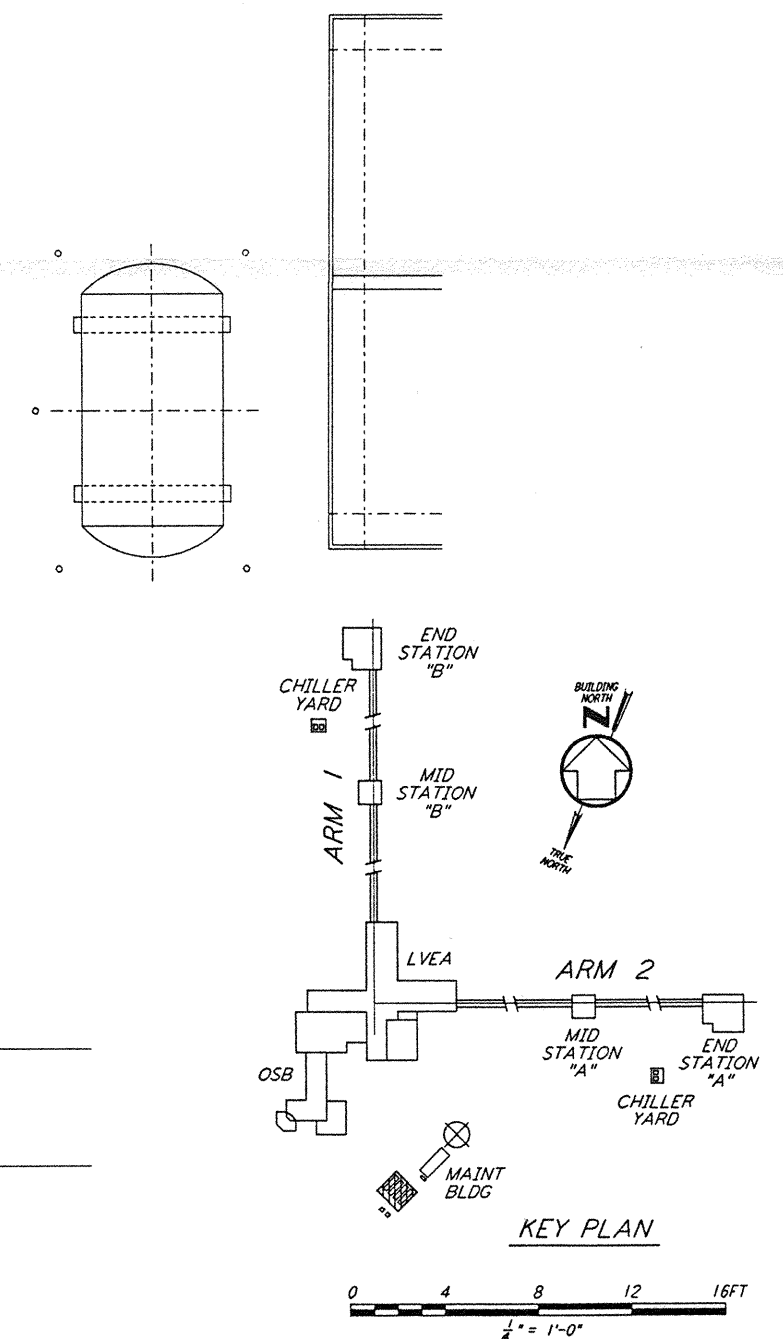


**NOTES:**

1. FOR LEGEND, ABBREVIATIONS AND GENERAL NOTES SEE SHEET LA-H-001 AND LA-H-002.
2. MAINTAIN MINIMUM 6'-0" CLEAR HEIGHT UNDER PIPES. FOR PIPE SUPPORT DETAILS SEE STRUCTURAL DRAWING WA-S-407.
3. PROVIDE FLOOR MOUNTED ELBOW SUPPORT AT THE PUMP SUCTION. CONTRACTOR MAY USE SUCTION DIFFUSER/STRAINER.
4. REFER TO SPECIFICATIONS FOR PIPE SUPPORT REQUIREMENTS.
5. SUPPORT PIPING TO ELIMINATE ANY LOADS TRANSMITTED FROM PIPING TO PUMPS AND CHILLERS.
6. FOR PIPING FLOW DIAGRAM SEE SHEET LA-H-121.
7. FOR VALVES AND CONTROL COMPONENTS SEE SHEET LA-H-121.
8. PROVIDE FLEXIBLE CONNECTOR ON THE COMPRESSED AIR DISCHARGE.
9. FOR CHILLERS AND PUMPS PIPING DETAILS SEE SHEETS LA-H-411 AND LA-H-412.
10. FOR EXACT LOCATION OF THE CHILLERS AND PUMPS SEE CIVIL DRAWINGS.



**CORNER STATION CHILLER YARD PLAN**  
 1/4" = 1'-0"



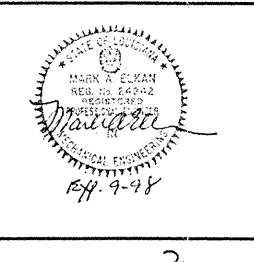
**KEY PLAN**  
 1/4" = 1'-0"

This document and the design it covers are the property of PARSONS. They are loaned only with the borrower's expressed written agreement that they will not be reproduced, copied, loaned, exhibited, or used in any other way, except by written consent from PARSONS to the borrower.

This document and the design it covers are the property of PARSONS. They are loaned only with the borrower's expressed written agreement that they will not be reproduced, copied, loaned, exhibited, or used in any other way, except by written consent from PARSONS to the borrower.

DRAWING NO.	DESCRIPTION	NO.	DATE	BY	CHKD	ENGR	PROJ	DESCRIPTION

ISSUED FOR CONSTRUCTION		
DRAWN	CLP	11-15-96
CHECKED	MP	10-28-96
ENGINEER	AA	10-23-96
PROJ		11/15/96



**PARSONS**  
 100 WEST WALNUT STREET  
 PASADENA, CALIFORNIA

**LIGO**  
 CALIFORNIA INSTITUTE OF TECHNOLOGY  
 MASSACHUSETTS INSTITUTE OF TECHNOLOGY

LASER INTERFEROMETER  
 GRAVITATIONAL-WAVE OBSERVATORY  
 SITE NO. 2 - LIVINGSTON, LOUISIANA

TITLE	SCALE	CONTRACT NUMBER	PROJECT NUMBER
HVAC CORNER STATION CHILLERS YARD FLOOR PLAN	AS NOTED	PP150969	8094
SHEET NUMBER		PERSONAL	
<b>LA-H-115</b>			