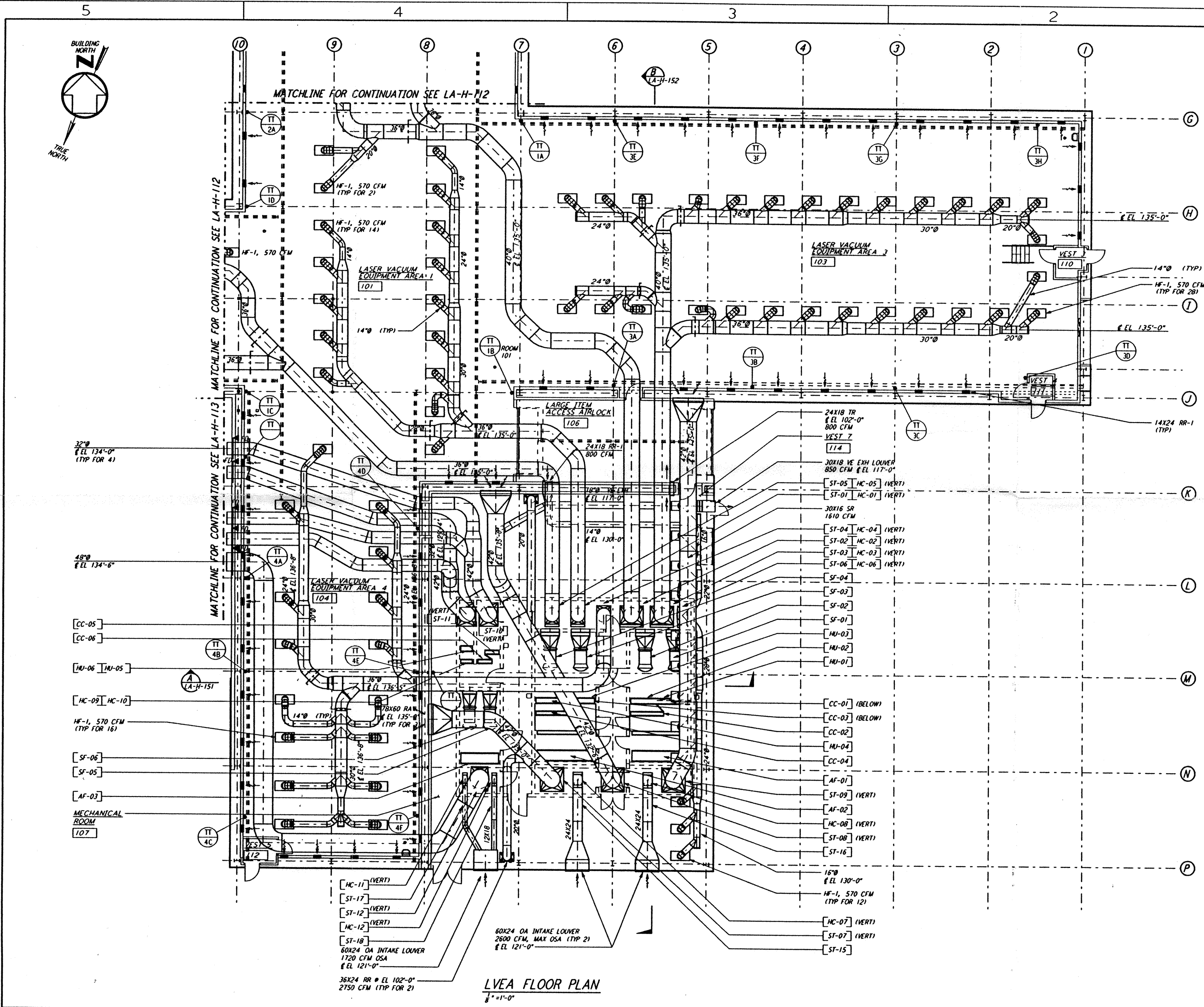


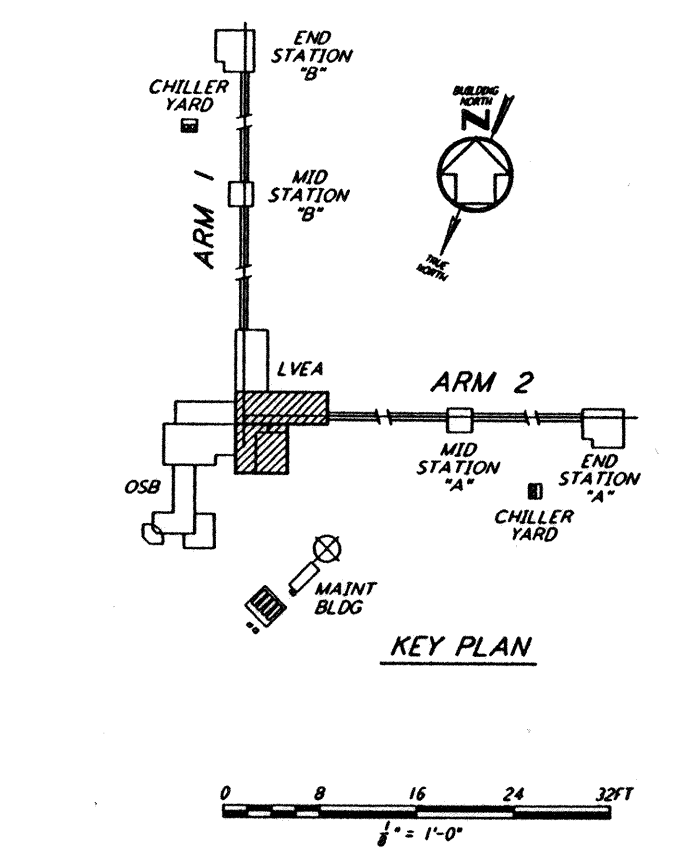
This document and the design it covers are the property of PARSONS. They are loaned only with the borrower's expressed written agreement that they will not be reproduced, copied, loaned, exhibited, or used in any other way, except by written consent from PARSONS to the borrower.



- NOTES:**
- FOR LEGEND, ABBREVIATIONS AND GENERAL NOTES SEE SHEETS LA-H-001 AND LA-H-002
  - ALL SUPPLY AIR DUCTS SHALL BE DOUBLE WALL WITH 1" RIGID INSULATION AND PERFORATED SHEET METAL LINER
  - RETURN AIR DUCTS FROM LVEA SHALL BE DOUBLE WALL WITH 1" RIGID INSULATION AND PERFORATED SHEET METAL LINER
  - RETURN AIR DUCTS FROM OSB SHALL BE SINGLE WALL WITHOUT INSULATION WITHIN OSB ARE, DOUBLE WALL WITH 1" RIGID INSULATION AND PERFORATED SHEET METAL LINER INSIDE LVEA AND MECHANICAL ROOM
  - RETURN AIR DUCTS FROM MECHANICAL ROOM SHALL BE SINGLE WALL WITHOUT INSULATION
  - OUTSIDE AIR DUCTS AND INTAKE PLENUMS SHALL BE DOUBLE WALL WITH 2" INSULATION AND SHEET METAL JACKET
  - THE INTERIOR ENVELOPE OF THE AIR HANDLING UNITS AND THE SUPPLY AIR PLENUM EXCEPT FLOOR SHALL BE COVERED BY 2" RIGID DUCT LINER WITH PERFORATED SHEET METAL LINER
  - DRAWINGS SHOW THE GENERAL ARRANGEMENT OF THE AIR HANDLING UNITS LAYOUT, THE CONTRACTOR WILL SUBMIT THE SHOP DRAWINGS INDICATING ALL CONSTRUCTION DETAILS
  - THE TEMPERATURE SENSORS FOR EACH ZONE WILL BE USED TO AVERAGE THE ROOM TEMPERATURE OR TO SELECT ANY ONE TO CONTROL THE ROOM TEMPERATURE
  - LOCATE ROOM TEMPERATURE SENSORS/TRANSMITTER INSIDE LVEA AT 18" ABOVE FINISHED FLOOR. LOCATE SENSORS AWAY FROM ANY HEAT SOURCE
  - LOCATE RETURN AIR REGISTERS ON THE WALLS BETWEEN STUDS
  - FOR PIPING FLOOR PLAN SEE SHEET LA-H-117
  - FOR LOCATION OF CONTROL PANELS SEE SHEET LA-H-117

ROOM TEMPERATURE SETTING		
ROOM NAME	TEMPERATURE SET POINT (°F)	
	MIN	MAX
LVEA AREA-1	72	72
LVEA AREA-2	72	72
LVEA AREA-4	72	72
LVEA AREA-5	72	72
MECHANICAL ROOM	65	80

- LEGEND:**
- TT XX ROOM TEMPERATURE SENSOR/TRANSMITTER
  - TT XX TEMPERATURE TRANSMITTER ID LETTER
  - LVEA LASER VACUUM EQUIPMENT AREA NUMBER
  - HF-1, HEPA FILTER OUTLET, 570 CFM



NO.	DATE	BY	CHKD	ENGR	PROJ	DESCRIPTION
C	7-24-96	CLP	ME	AA	TDM	ISSUED FOR BID
B	6-14-96	CLP	ME	AA	TDM	FINAL DESIGN REVIEW
A	10-31-95	CLP	ME	AA	TDM	PRELIMINARY DESIGN REVIEW

DRAWN	CLP
CHECKED	
ENGINEER	
PROJ	

**PARSONS**  
 100 WEST WALNUT STREET  
 PASADENA, CALIFORNIA

**LIGO**  
 CALIFORNIA INSTITUTE OF TECHNOLOGY  
 MASSACHUSETTS INSTITUTE OF TECHNOLOGY

LASER INTERFEROMETER GRAVITATIONAL-WAVE OBSERVATORY SITE NO.2 - LIVINGSTON, LOUISIANA			
TITLE	HVAC CORNER STATION LVEA FLOOR PLAN SHEET 1	SCALE	AS NOTED
PROJECT NUMBER	PP150969	PROJECT NUMBER	8094
<b>LA-H-111</b>			

Mon Jul 22 14:14:50 1996 s3-v18b2 J:\PLOTS\QUEUES\182\MU11B.PRF