

LVEA FLOOR PLAN
 1/8" = 1'-0"

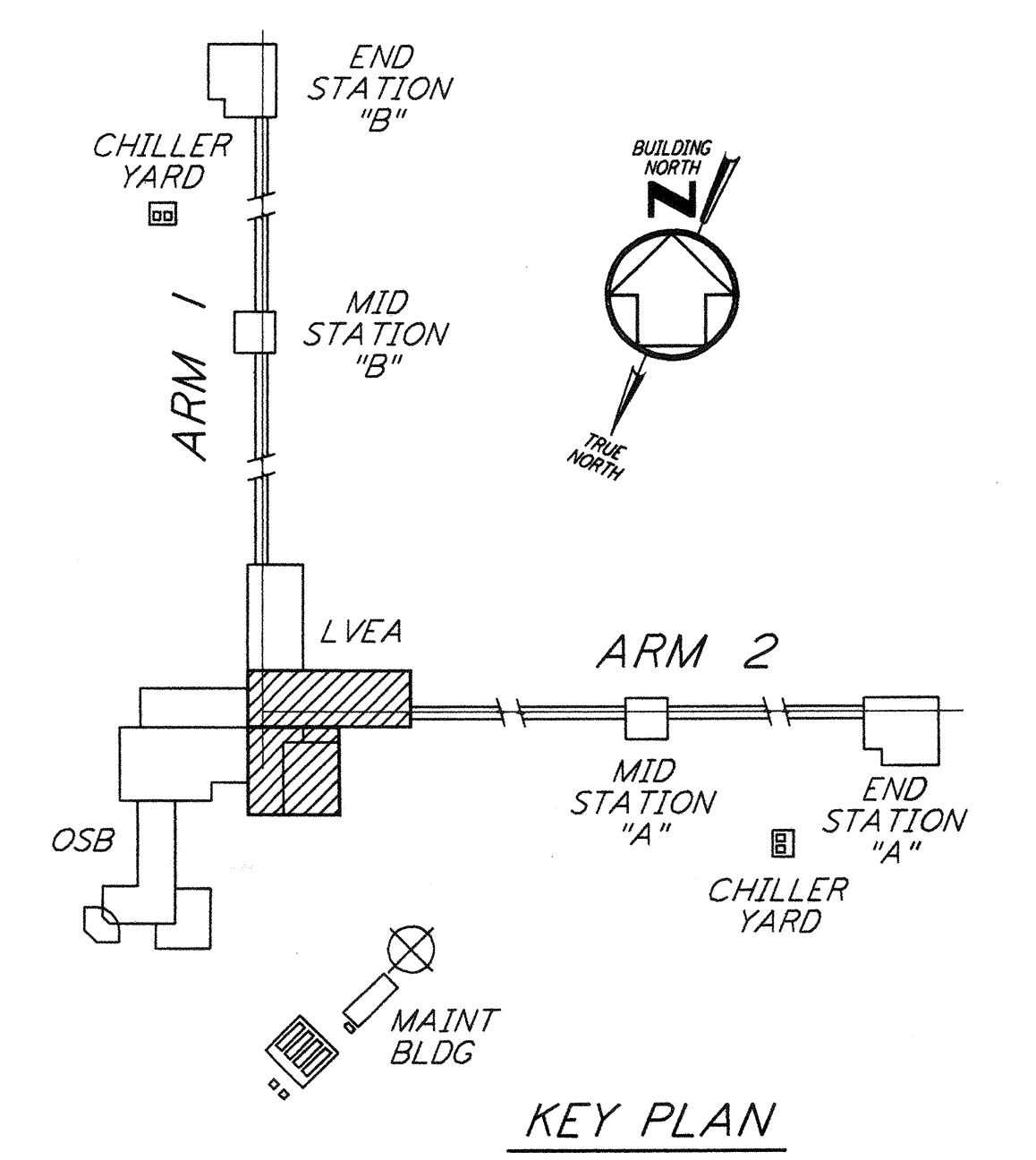
NOTES:

- FOR LEGEND, ABBREVIATIONS AND GENERAL NOTES SEE SHEETS LA-H-001 AND LA-H-002.
- ALL SUPPLY AIR DUCTS SHALL BE DOUBLE WALL WITH 1" RIGID INSULATION AND PERFORATED SHEET METAL LINER.
- RETURN AIR DUCTS FROM LVEA SHALL BE DOUBLE WALL WITH 2" RIGID INSULATION AND PERFORATED SHEET METAL LINER.
- RETURN AIR DUCTS FROM OSB SHALL BE SINGLE WALL WITHOUT INSULATION WITHIN OSB ARE, DOUBLE WALL WITH 2" RIGID INSULATION AND PERFORATED SHEET METAL LINER INSIDE LVEA AND MECHANICAL ROOM.
- RETURN AIR DUCTS FROM MECHANICAL ROOM SHALL BE SINGLE WALL WITHOUT INSULATION.
- OUTSIDE AIR DUCTS AND INTAKE PLENUMS SHALL BE DOUBLE WALL WITH 2" INSULATION AND SHEET METAL JACKET.
- THE INTERIOR ENVELOPE OF THE AIR HANDLING UNITS AND THE SUPPLY AIR PLENUM EXCEPT FLOOR SHALL BE COVERED BY 2" RIGID DUCT LINER WITH PERFORATED SHEET METAL LINER.
- DRAWINGS SHOW THE GENERAL ARRANGEMENT OF THE AIR HANDLING UNITS LAYOUT, THE CONTRACTOR WILL SUBMIT THE SHOP DRAWINGS INDICATING ALL CONSTRUCTION DETAILS.
- THE TEMPERATURE SENSORS FOR EACH ZONE WILL BE USED TO AVERAGE THE ROOM TEMPERATURE OR TO SELECT ANY ONE TO CONTROL THE ROOM TEMPERATURE.
- LOCATE ROOM TEMPERATURE SENSORS/TRANSMITTER INSIDE LVEA AT 18" ABOVE FINISHED FLOOR, LOCATE SENSORS AWAY FROM ANY HEAT SOURCE. LOCATE ALL OTHER TEMPERATURE SENSOR/TRANSMITTERS AT 48" ABOVE FLOOR.
- LOCATE RETURN AIR REGISTERS ON THE WALLS BETWEEN STUDS.
- FOR PIPING FLOOR PLAN SEE SHEET LA-H-117.
- FOR LOCATION OF CONTROL PANELS SEE SHEET LA-H-117.

ROOM TEMPERATURE SETTING		
ROOM NAME	TEMPERATURE SET POINT (°F)	
	MIN	MAX
LVEA AREA-1	72	72
LVEA AREA-2	72	72
LVEA AREA-4	72	72
LVEA AREA-5	72	72
MECHANICAL ROOM	65	80

LEGEND:

- TT XY ROOM TEMPERATURE SENSOR/TRANSMITTER
- TT XY TEMPERATURE TRANSMITTER ID LETTER
- LASER VACUUM EQUIPMENT AREA NUMBER
- HF-1, HEPA FILTER OUTLET, 570 CFM



KEY PLAN
 1/8" = 1'-0"

This document and the design it covers are the property of PARSONS. They are loaned only with the borrower's expressed written agreement that they will not be reproduced, copied, loaned, exhibited, or used in any other way, except by written consent from PARSONS to the borrower.

NO.	DATE	BY	CHKD	ENGR	PROJ	DESCRIPTION
2	8-7-98	DJB	AA	AA	TDM	ISSUED FOR AS-BUILT
1	3-20-97	WVK	AA	AA	TDM	REVISED NOTES 3 AND 4

NO.	DATE	BY	CHKD	ENGR	PROJ	DESCRIPTION
1	11-15-96	CLP	AA	AA	TDM	ISSUED FOR CONSTRUCTION
1	10-25-96	MN	AA	AA	TDM	CHECKED
1	10-23-96	AA	AA	AA	TDM	ENGINEER
1	11-15-96	TDM	AA	AA	TDM	PROJ

AS-BUILT DRAWINGS

ISSUED FOR CONSTRUCTION
 DRAWN CLP 11-15-96
 CHECKED MN 10-25-96
 ENGINEER AA 10-23-96
 PROJ TDM 11-15-96

PARSONS
 100 WEST WALNUT STREET
 PASADENA, CALIFORNIA

LIGO
 CALIFORNIA INSTITUTE OF TECHNOLOGY
 MASSACHUSETTS INSTITUTE OF TECHNOLOGY

LIGO-D960967-02-0
 LASER INTERFEROMETER
 GRAVITATIONAL-WAVE OBSERVATORY
 SITE NO. 2 - LIVINGSTON, LOUISIANA

TITLE	SCALE	CONTRACT NUMBER	PROJECT NUMBER
HVAC CORNER STATION LVEA FLOOR PLAN SHEET 1	AS NOTED	PP150969	8094
SHEET NUMBER	REVISIONS		
LA-H-111			