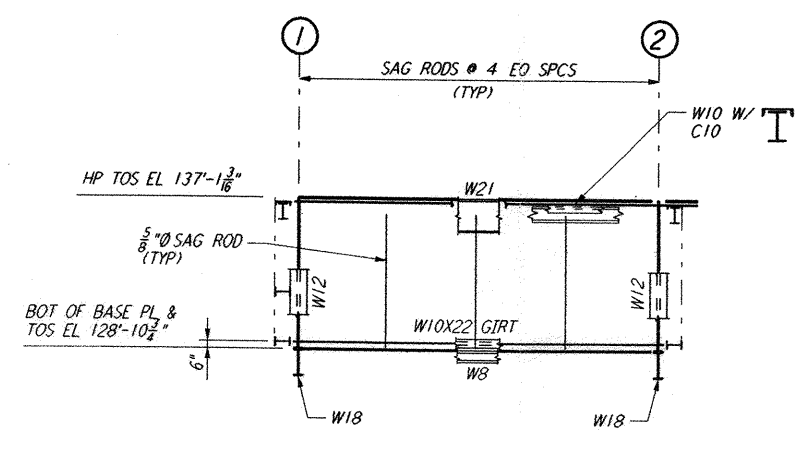


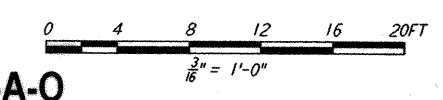
ELEVATION AT COLUMN LINE 5



ELEVATION AT COLUMN LINE B.1
 3/8" = 1'-0"

not be reproduced, copied, loaned, exhibited, or used in any other way, except by written consent from PARSONS to the borrower.

This document and the design it covers are the property of PARSONS. They are loaned only with the borrower's expressed written agreement that they will



LIGO-D960951-A-0

NO.	DATE	APRD BY	DESCRIPTION OF REVISION
9			
8			
7			
6			
5			
4			
3			
2			
1			

ISSUE	NO.	DATE	APRD BY	ISSUED FOR
A	10-31-95	TDM		PRELIMINARY DESIGN REVIEW

DATE	10-31-95
DRAWN	MCS
CHECKED	
ENGINEER	
PROJ MGR	

PARSONS
 100 WEST WALNUT STREET
 PASADENA, CALIFORNIA

LIGO
 CALIFORNIA INSTITUTE OF TECHNOLOGY
 MASSACHUSETTS INSTITUTE OF TECHNOLOGY

LASER INTERFEROMETER
 GRAVITATIONAL-WAVE OBSERVATORY
 SITE NO. 2 - LIVINGSTON, LOUISIANA

TITLE	SCALE	CONTRACT NUMBER	PROJECT NUMBER
END STATION FRAMING ELEVATIONS SHEET 3	AS NOTED	PP150969	8094
	SHEET NUMBER	LA-S-307	

Mon Oct 30 20:02:59 1995 s3-v18b2 J:\PLOTS\QUEUES\W18B2\ST307.PRF