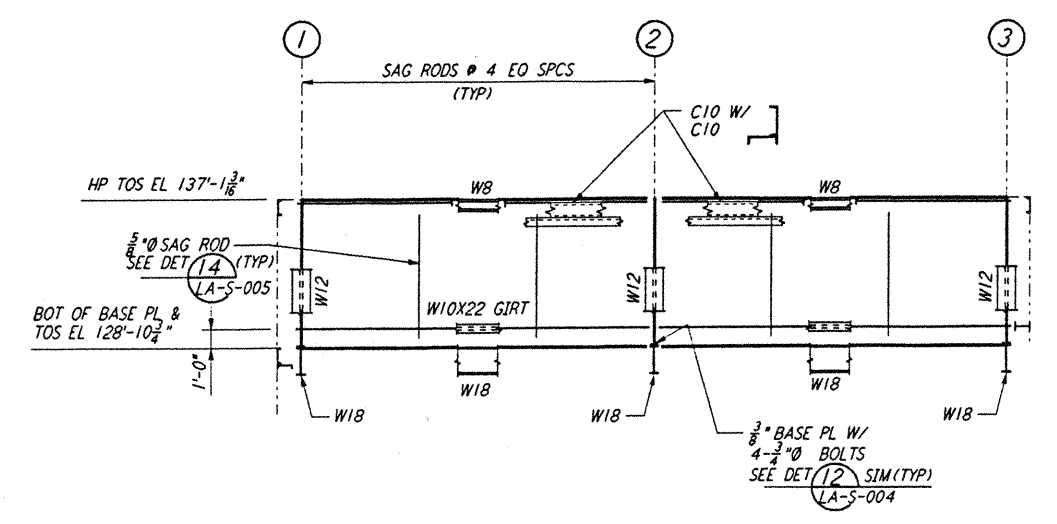


LOOKING NORTH - FOR END STATION "B" ON ARM 1
 LOOKING WEST - FOR END STATION "A" ON ARM 2
 ELEVATION AT COLUMN LINE 5
 $\frac{3}{8}'' = 1'-0''$

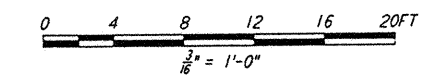


LOOKING WEST - FOR END STATION "B" ON ARM 1
 LOOKING NORTH - FOR END STATION "A" ON ARM 2
 ELEVATION AT COLUMN LINE 1
 $\frac{3}{8}'' = 1'-0''$

not be reproduced, copied, loaned, exhibited, or used in any other way, except by written consent from PARSONS to the borrower.

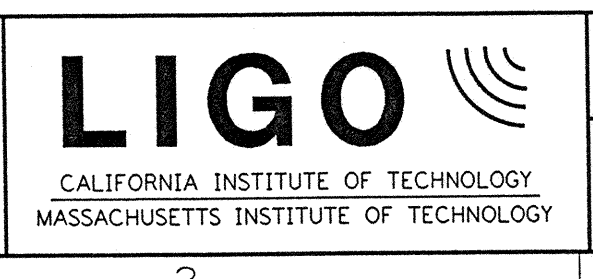
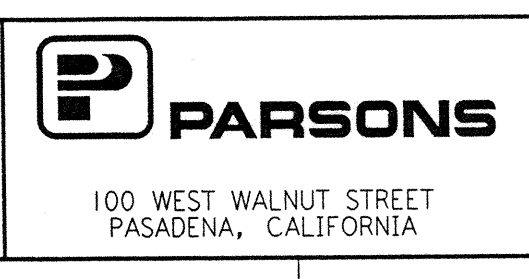
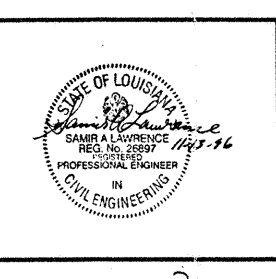
This document and the design it covers are the property of PARSONS. They are loaned only with the borrower's expressed written agreement that they will

NOTE:
 FOR NOTES SEE DRAWING LA-S-305.



NO.	DATE	BY	CHKD	ENGR	PROJ	DESCRIPTION

ISSUED FOR CONSTRUCTION	
DRAWN	MCS 11-15-96
CHECKED	BDP 11-15-96
ENGINEER	BT 11-15-96
PROJ	BDP 11/15/96



LASER INTERFEROMETER GRAVITATIONAL-WAVE OBSERVATORY SITE NO. 2 - LIVINGSTON, LOUISIANA			
TITLE	STRUCTURAL END STATIONS "A" & "B" FRAMING ELEVATIONS SHEET 3	SCALE	AS NOTED
CONTRACT NUMBER	PP150969	PROJECT NUMBER	8094
SHEET NUMBER	LA-S-307	REVISIONS	

L160-0960951-00-0

L160LAF.BDR