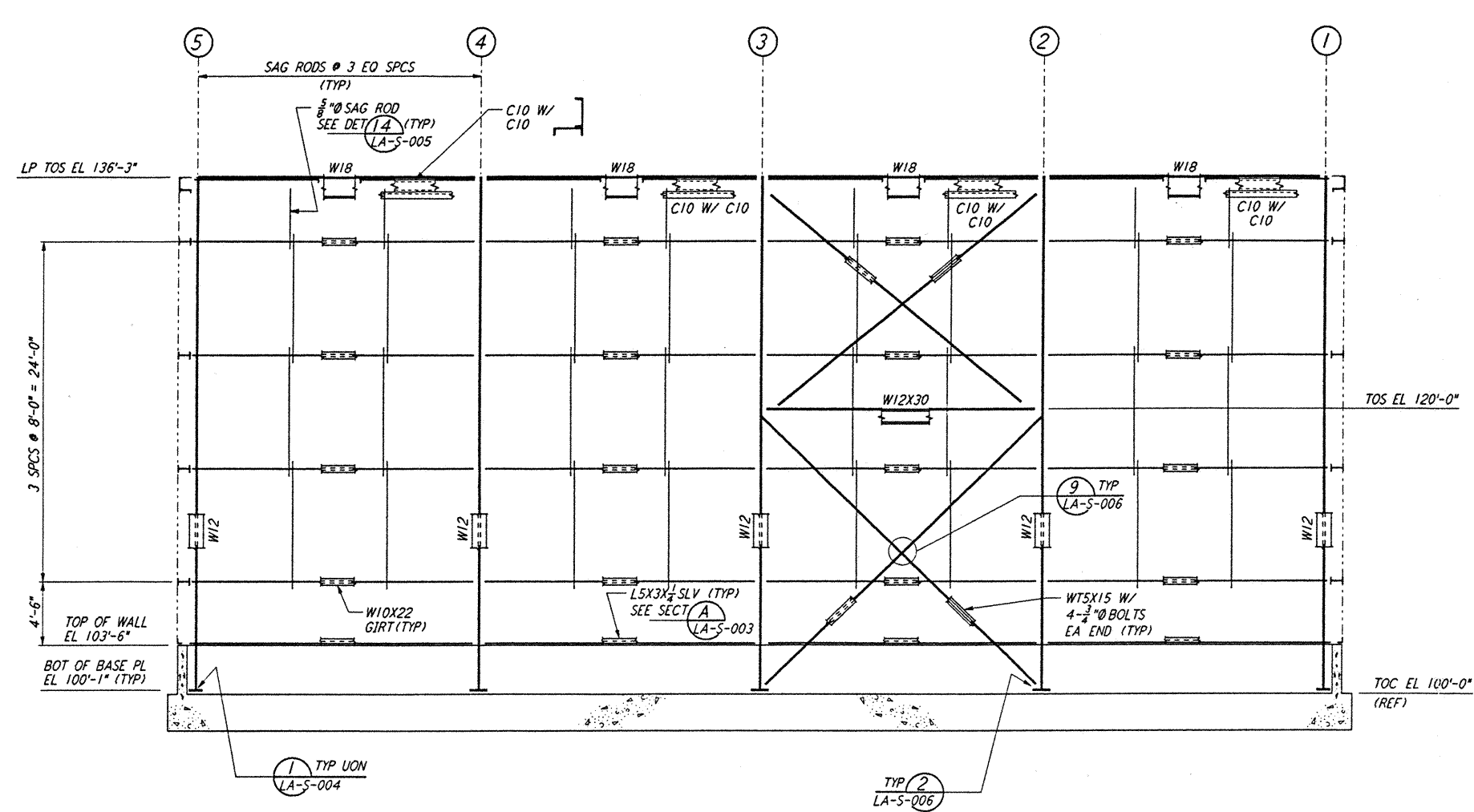
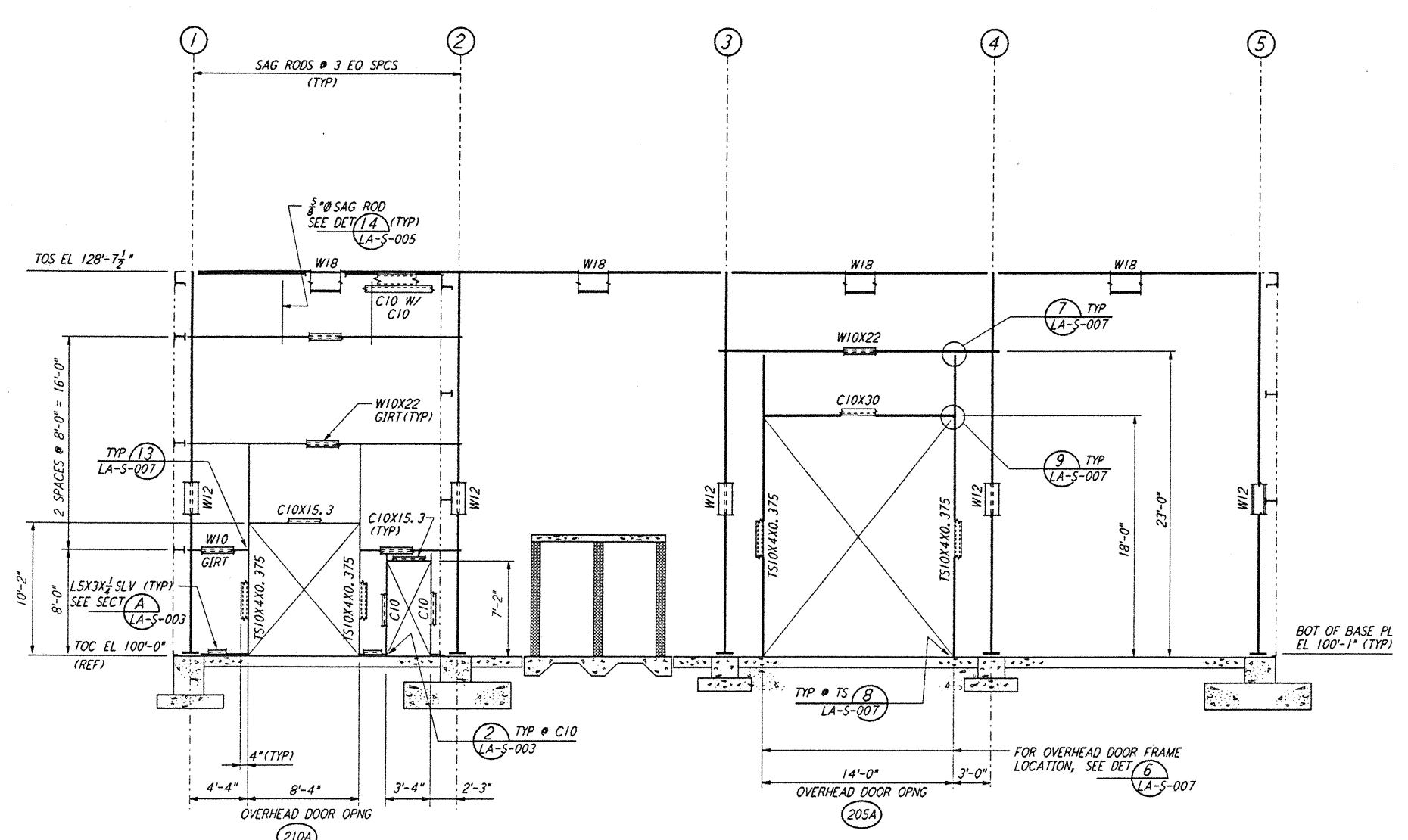


not be reproduced, copied, loaned, exhibited, or used in any other way, except by written consent from PARSONS to the borrower.

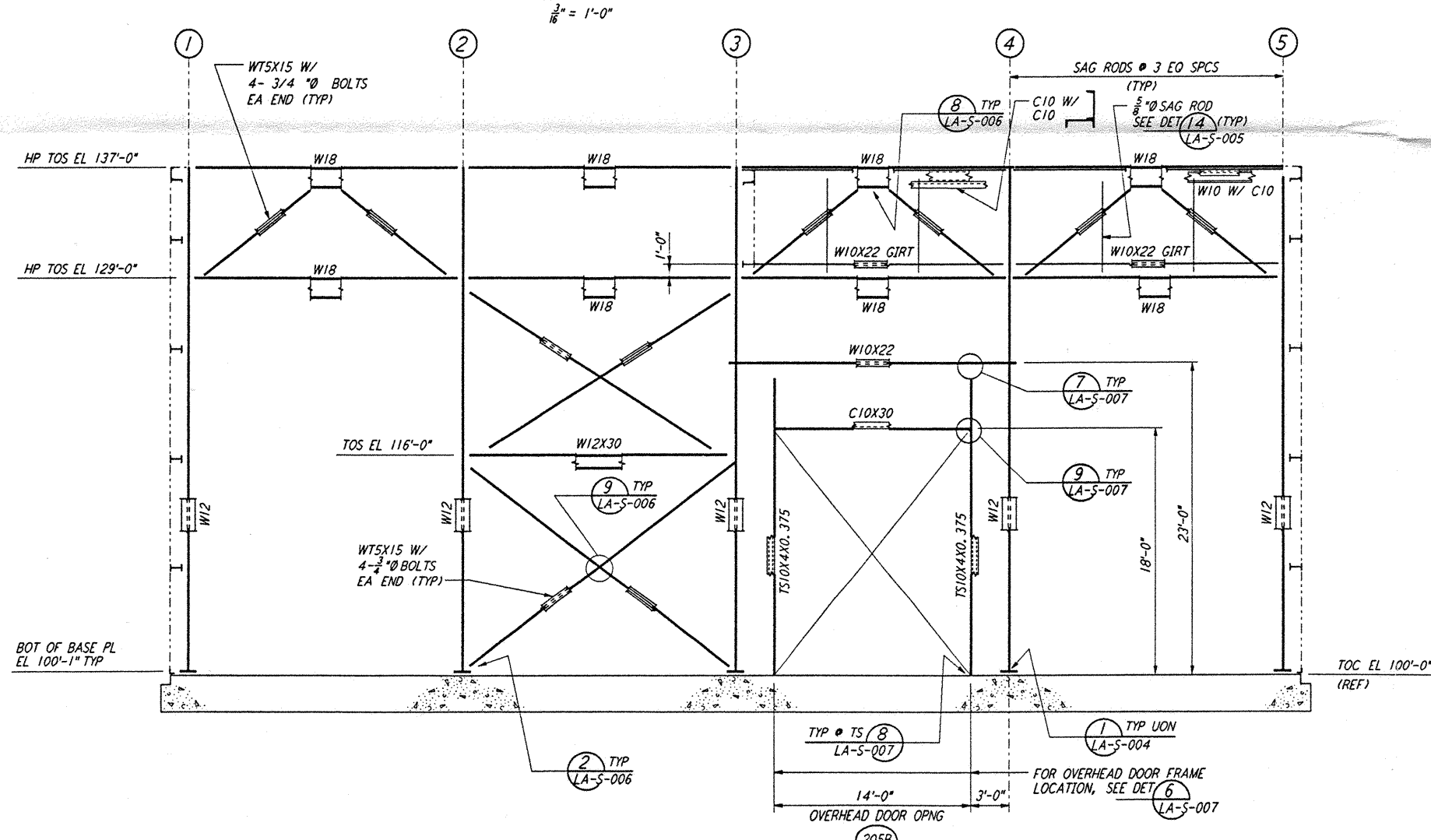
This document and the design it covers are the property of PARSONS. They are loaned only with the borrower's expressed written agreement that they will



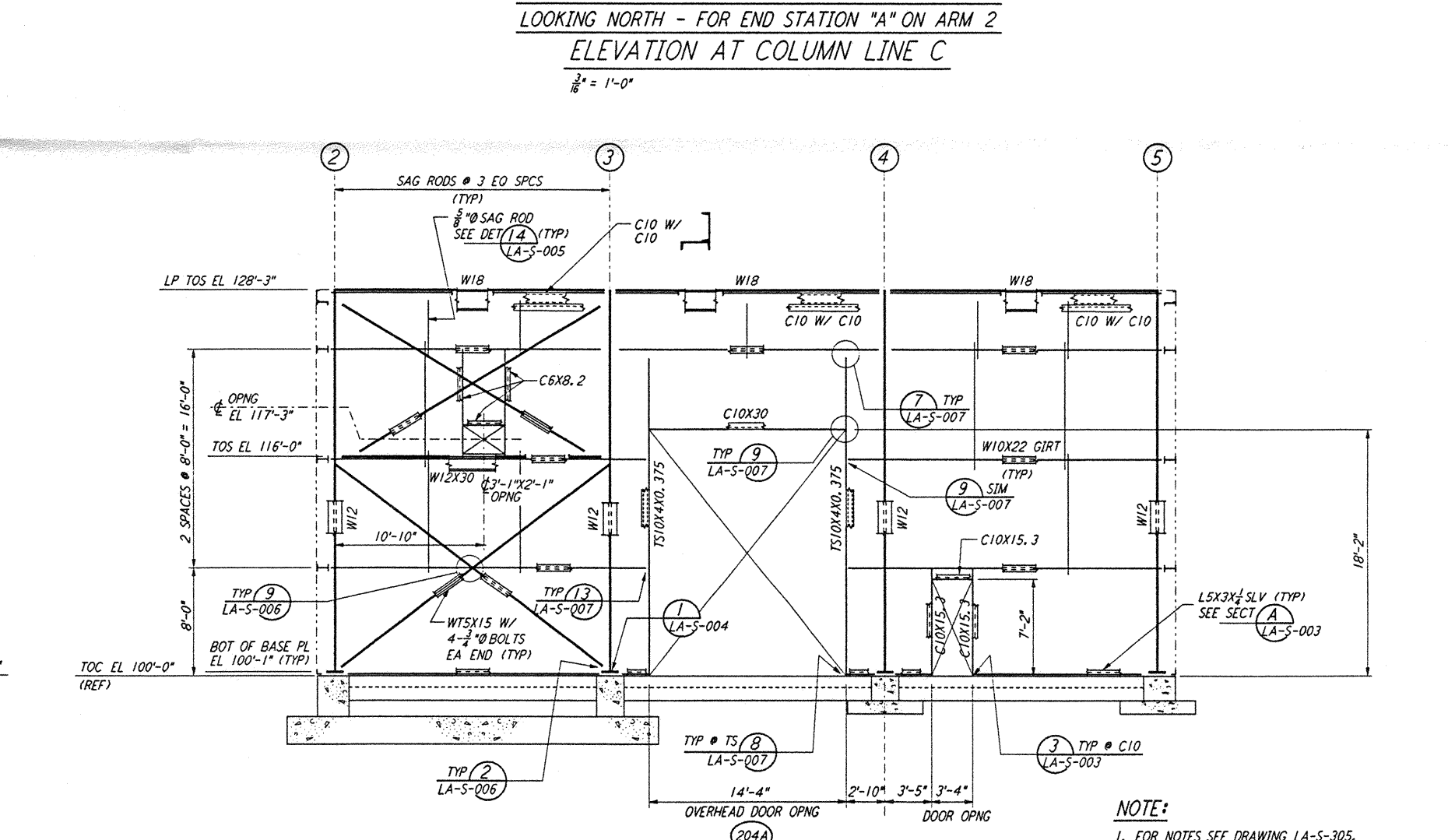
LOOKING EAST - FOR END STATION "B" ON ARM 1  
 LOOKING SOUTH - FOR END STATION "A" ON ARM 2  
 ELEVATION AT COLUMN LINE A  
 1/8" = 1'-0"



LOOKING WEST - FOR END STATION "B" ON ARM 1  
 LOOKING NORTH - FOR END STATION "A" ON ARM 2  
 ELEVATION AT COLUMN LINE C  
 1/8" = 1'-0"

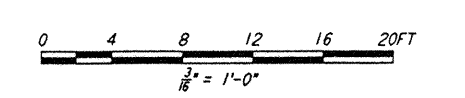


LOOKING WEST - FOR END STATION "B" ON ARM 1  
 LOOKING NORTH - FOR END STATION "A" ON ARM 2  
 ELEVATION AT COLUMN LINE B  
 1/8" = 1'-0"



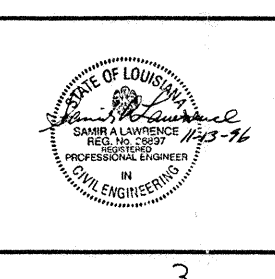
LOOKING WEST - FOR END STATION "B" ON ARM 1  
 LOOKING NORTH - FOR END STATION "A" ON ARM 2  
 ELEVATION AT COLUMN LINE D  
 1/8" = 1'-0"

NOTE:  
 1. FOR NOTES SEE DRAWING LA-S-305.



NO.	DATE	BY	CHKD	ENGR	PROJ	DESCRIPTION

ISSUED FOR CONSTRUCTION	
DRAWN	MCS 11-15-96
CHECKED	BBM 11-15-96
ENGINEER	AP 11-15-96
PROJ	2000 11/15/96



**PARSONS**  
 100 WEST WALNUT STREET  
 PASADENA, CALIFORNIA

**LIGO**  
 CALIFORNIA INSTITUTE OF TECHNOLOGY  
 MASSACHUSETTS INSTITUTE OF TECHNOLOGY

LASER INTERFEROMETER  
 GRAVITATIONAL-WAVE OBSERVATORY  
 SITE NO. 2 - LIVINGSTON, LOUISIANA  
 STRUCTURAL  
 END STATIONS "A" & "B"  
 FRAMING ELEVATIONS  
 SHEET 2  
 AS NOTED PP150969 8094  
**LA-S-306**