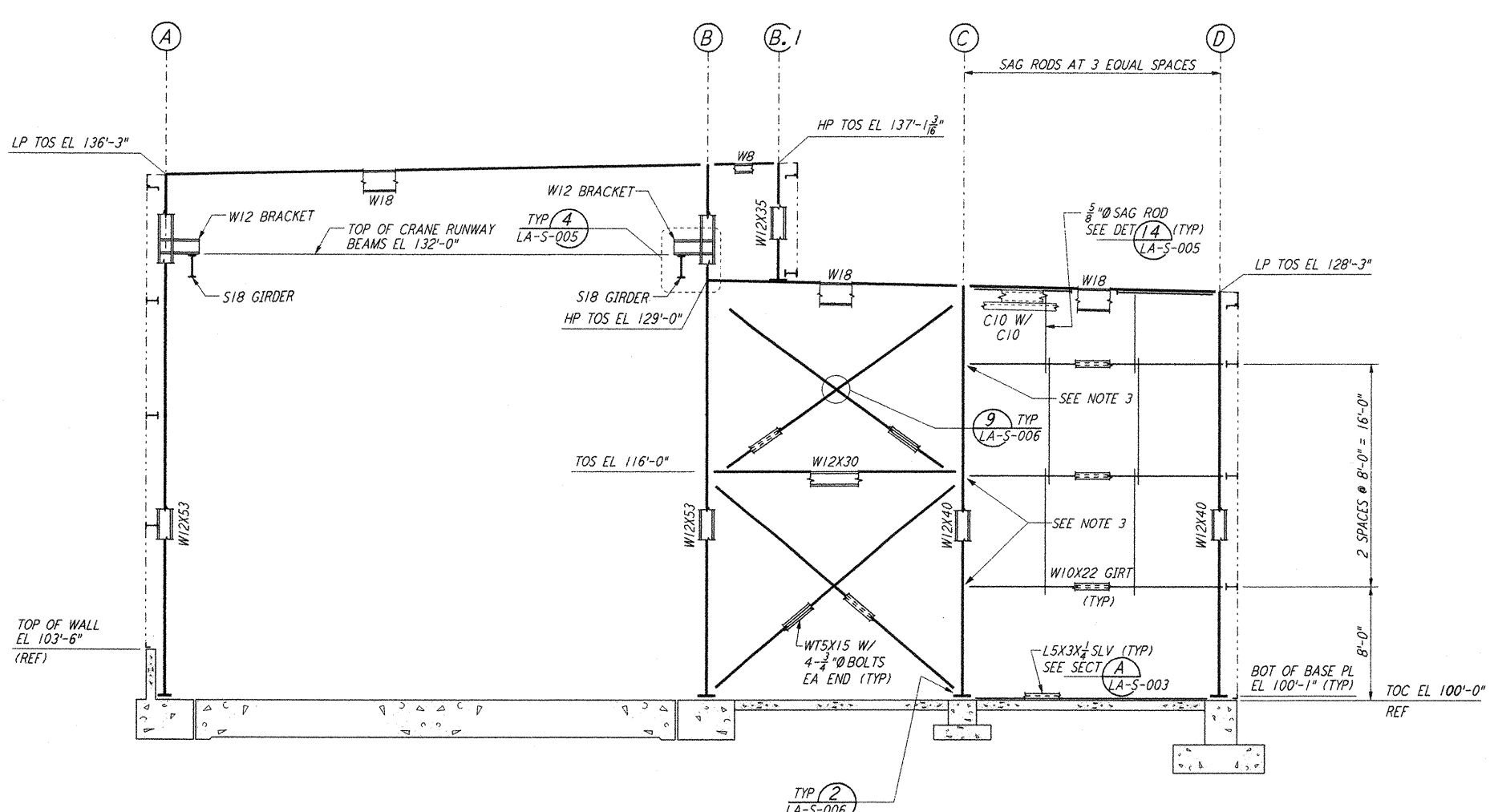
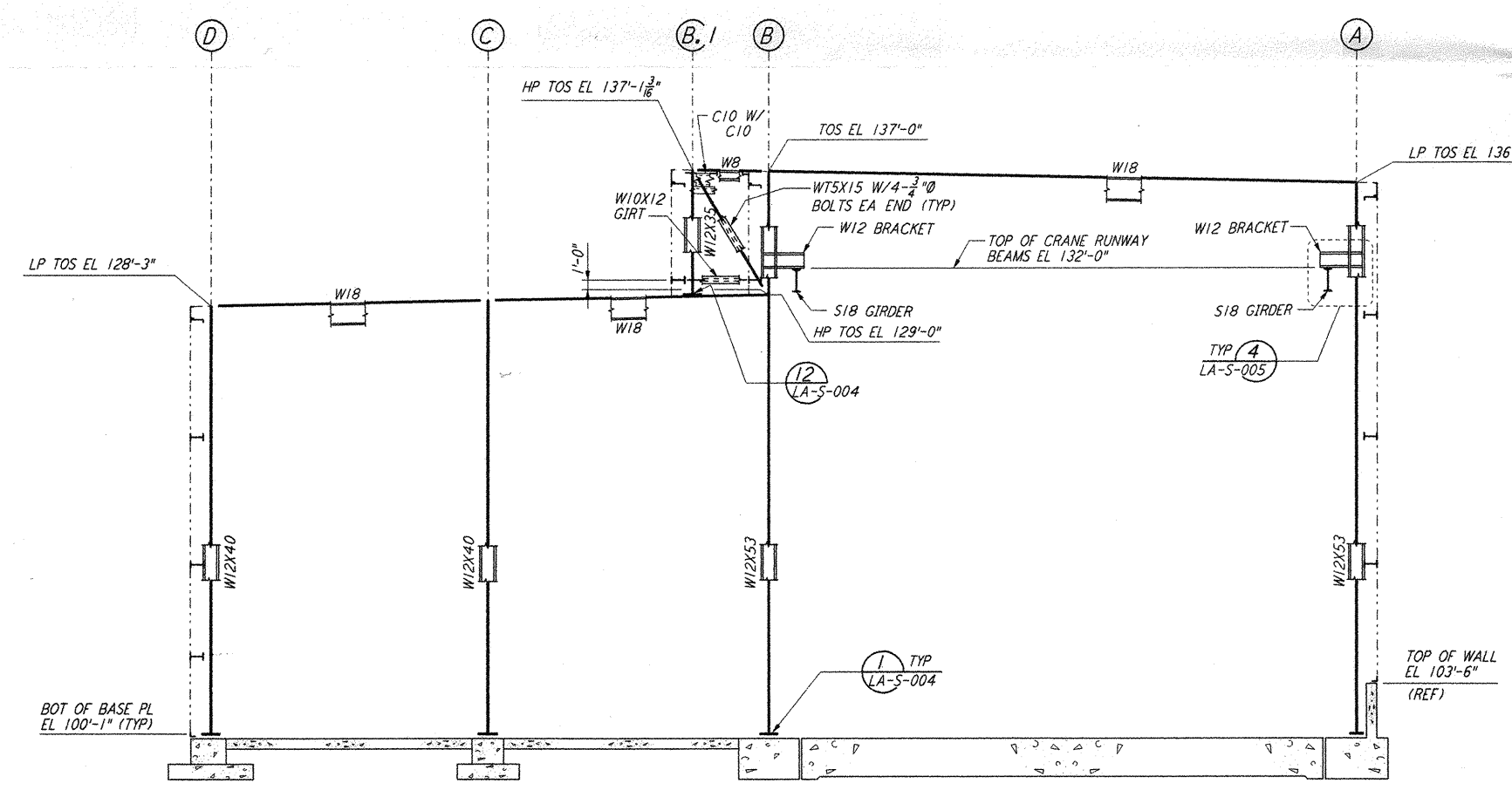


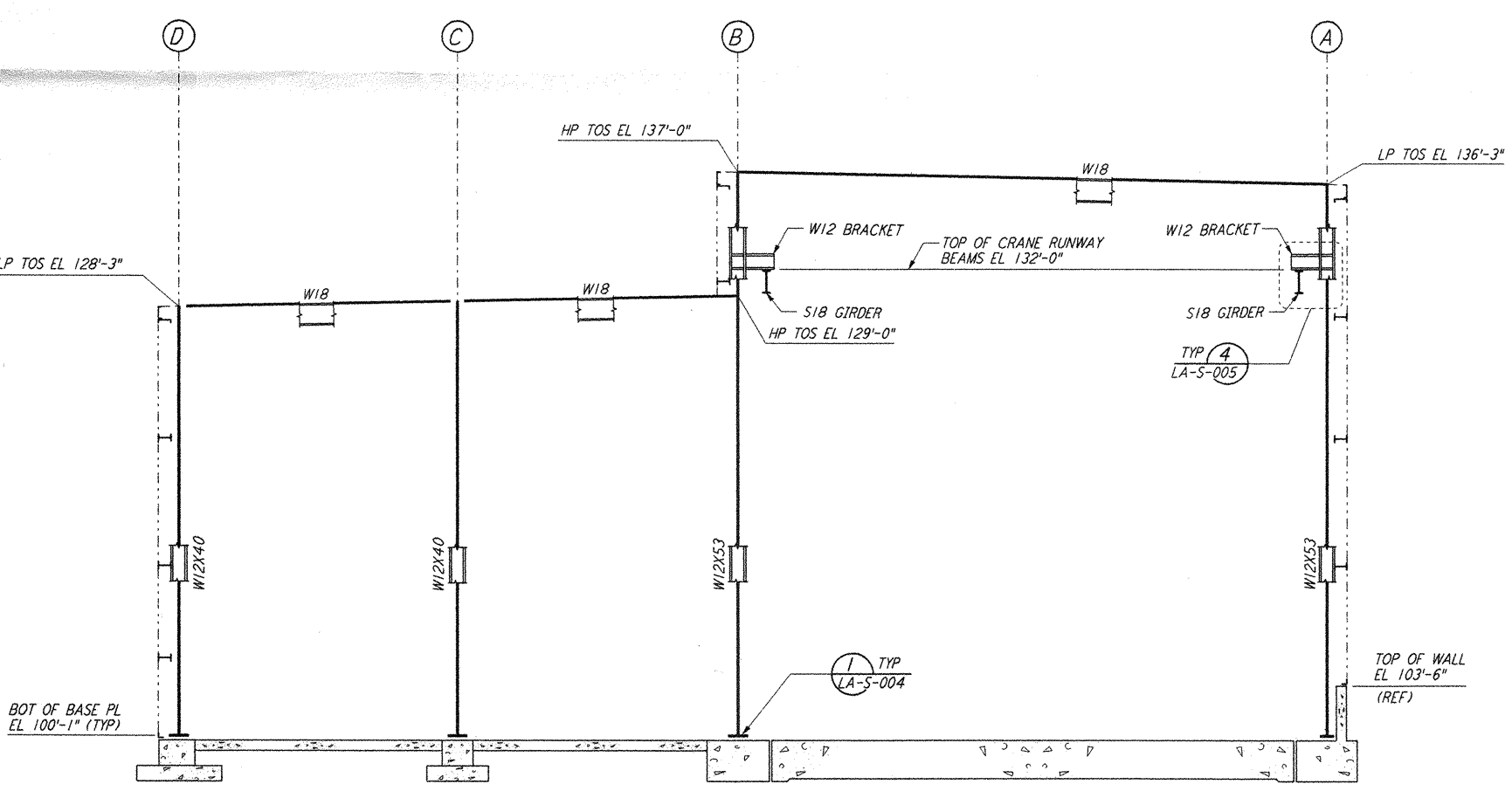
LOOKING SOUTH - FOR END STATION "B" ON ARM 1  
 LOOKING EAST - FOR END STATION "A" ON ARM 2  
 ELEVATION AT COLUMN LINE 1  
 $\frac{3}{8}'' = 1'-0''$



LOOKING SOUTH - FOR END STATION "B" ON ARM 1  
 LOOKING EAST - FOR END STATION "A" ON ARM 2  
 ELEVATION AT COLUMN LINE 2  
 $\frac{3}{8}'' = 1'-0''$

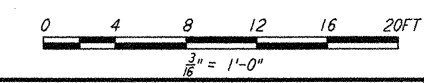


LOOKING NORTH - FOR END STATION "B" ON ARM 1  
 LOOKING WEST - FOR END STATION "A" ON ARM 2  
 ELEVATION AT COLUMN LINE 3  
 $\frac{3}{8}'' = 1'-0''$



LOOKING NORTH - FOR END STATION "B" ON ARM 1  
 LOOKING WEST - FOR END STATION "A" ON ARM 2  
 ELEVATION AT COLUMN LINE 4  
 $\frac{3}{8}'' = 1'-0''$

- NOTES:
1. FOR NOTES SEE DRAWING LA-S-107.
  2. FOR VERTICAL BRACING CONNECTIONS, SEE DETAIL (5) LA-S-006
  3. FIELD WELD BOTH LEGS L4X3 1/2 CONNECTORS TO C10 GIRTS.
  4. ATTACH LADDER SUPPORTS PER STANDARD DETAIL AT GIRTS.



NO.	DATE	BY	CHKD	ENGR	PROJ	DESCRIPTION
1	08-07-98	WA	DDM	DDM	WDD	ISSUED FOR AS-BUILT

ISSUED FOR CONSTRUCTION	
DRAWN	MCS 11-15-96
CHECKED	DDM 11-15-96
ENGINEER	BP 11-15-96
PROJ	TDM 11-15-96
<b>AS-BUILT DRAWINGS</b>	

**PARSONS**  
 100 WEST WALNUT STREET  
 PASADENA, CALIFORNIA

**LIGO**  
 CALIFORNIA INSTITUTE OF TECHNOLOGY  
 MASSACHUSETTS INSTITUTE OF TECHNOLOGY

**LIGO-D960949-01-0**  
 LASER INTERFEROMETER  
 GRAVITATIONAL-WAVE OBSERVATORY  
 SITE NO. 2 - LIVINGSTON, LOUISIANA

TITLE	STRUCTURAL END STATIONS "A" & "B" FRAMING ELEVATIONS SHEET 1
SHEET NUMBER	AS NOTED PPI 150969
PROJECT NUMBER	8094
<b>LA-S-305</b>	

This document and the design it covers are the property of PARSONS. They are loaned only with the borrower's expressed written agreement that they will not be reproduced, copied, loaned, exhibited, or used in any other way, except by written consent from PARSONS to the borrower.

Non Aug 17 08:58:48 1998 C:\PLOT\QUE\33-V\F8E2.DWG 52085 K:\V\B62\A\305.dwg