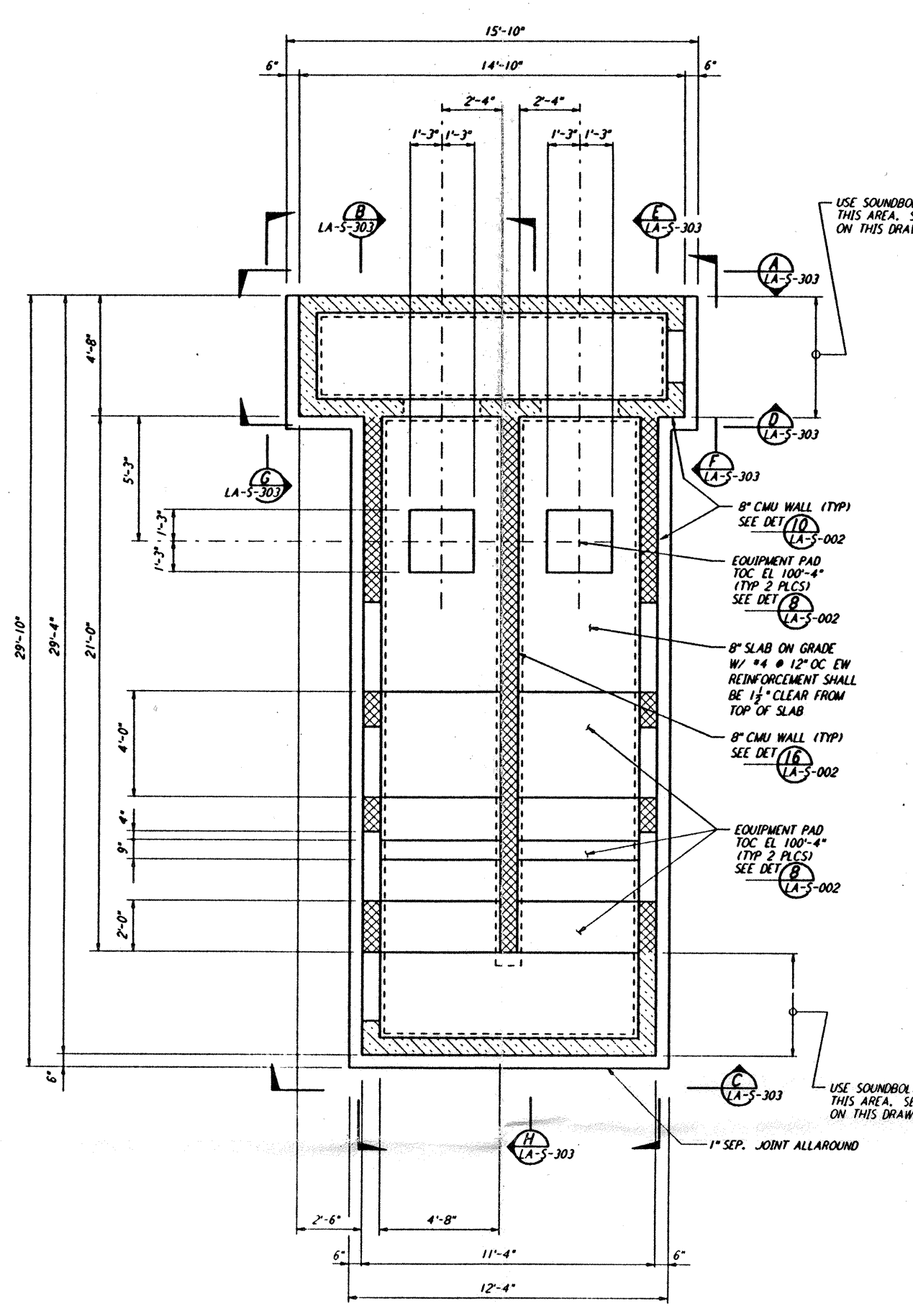
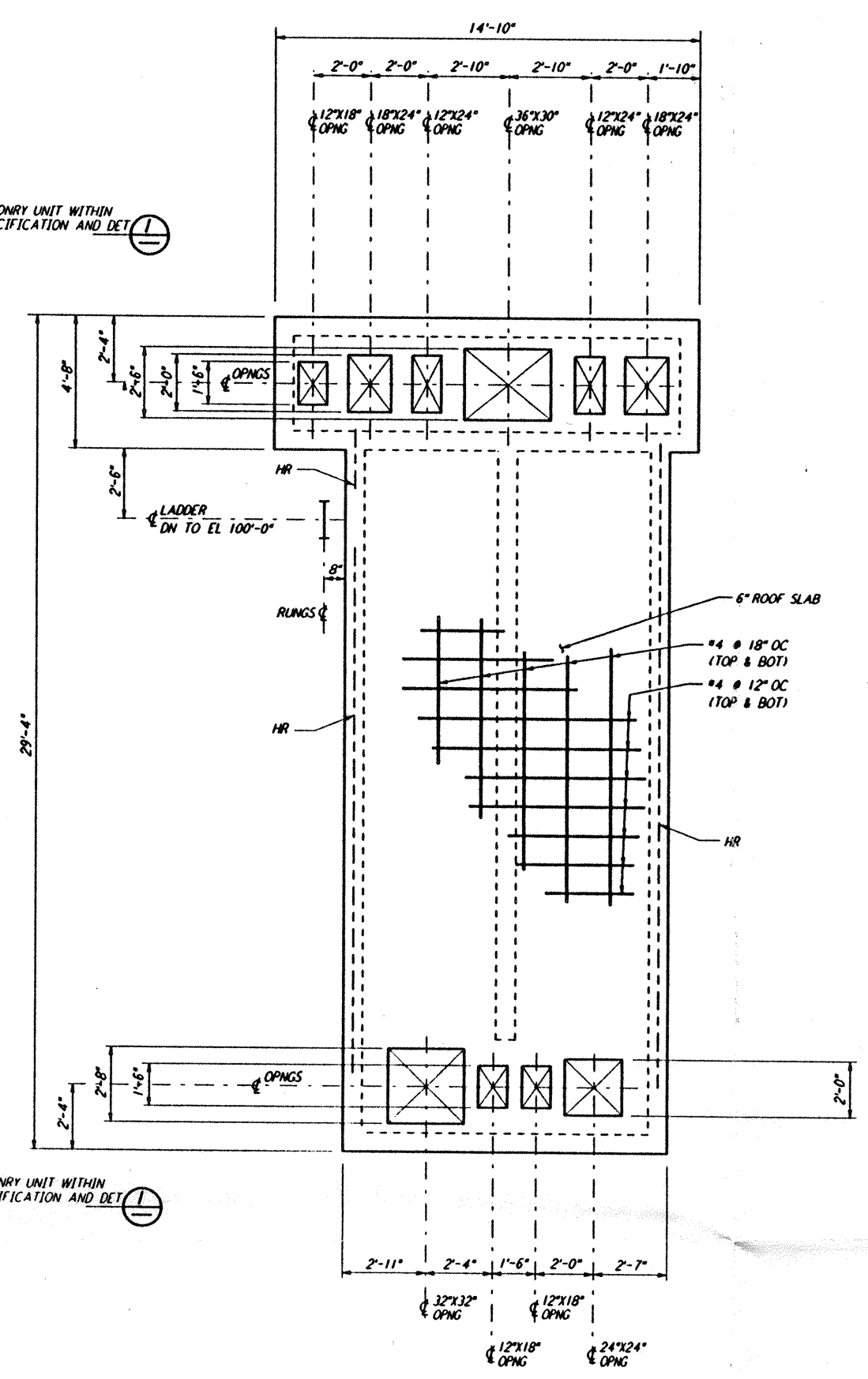


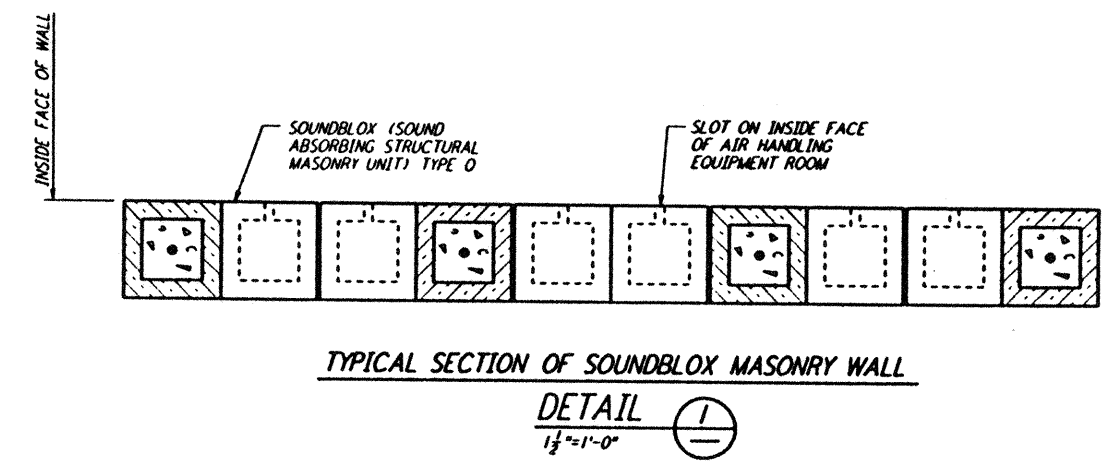
Mon Jul 22 18:24:24 1996 S3-V18B2 J:\PLOTS\QUEUES\18B2\ST302.PRF



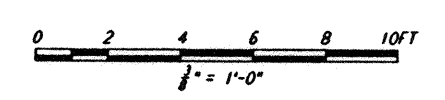
**AIR HANDLING UNIT STRUCTURE**  
**FOUNDATION PLAN**  
 1/2" = 1'-0"



**AIR HANDLING UNIT STRUCTURE**  
**CONCRETE ROOF SLAB PLAN**  
 1/2" = 1'-0"



- NOTES:**
1. LOCATION AND SIZE OF ALL EQUIPMENT PADS ARE FOR BID PURPOSE ONLY. CONTRACTOR SHALL ADJUST TO SUIT ACTUAL EQUIPMENT AND SUBMIT DRAWINGS SHOWING ACTUAL SIZES AND LOCATIONS PRIOR TO CONSTRUCTION.
  2. FOR AIR HANDLING UNIT STRUCTURE ORIENTATION, SEE FOUNDATION PLAN ON DRAWING LA-S-301.



NO.	DATE	BY	CHKD	ENGR	PROJ	DESCRIPTION
B	7-24-96	MCS	DDM	BP	TDW	ISSUED FOR BID
A	6-14-96	MCS	DDM	BP	TDW	FINAL DESIGN REVIEW

DRAWN	MCS
CHECKED	
ENGINEER	
PROJ	

**PARSONS**  
 100 WEST WALNUT STREET  
 PASADENA, CALIFORNIA

**LIGO**  
 CALIFORNIA INSTITUTE OF TECHNOLOGY  
 MASSACHUSETTS INSTITUTE OF TECHNOLOGY

LASER INTERFEROMETER  
 GRAVITATIONAL-WAVE OBSERVATORY  
 SITE NO. 2 - LIVINGSTON, LOUISIANA

STRUCTURAL  
 END STATIONS "A" & "B"  
 AIR HANDLING UNIT  
 ENCLOSURE PLANS

AS NOTED PPI50969 8094  
**LA-S-302**

LIGO-D960946-B-0

LIGOLAF.BDR