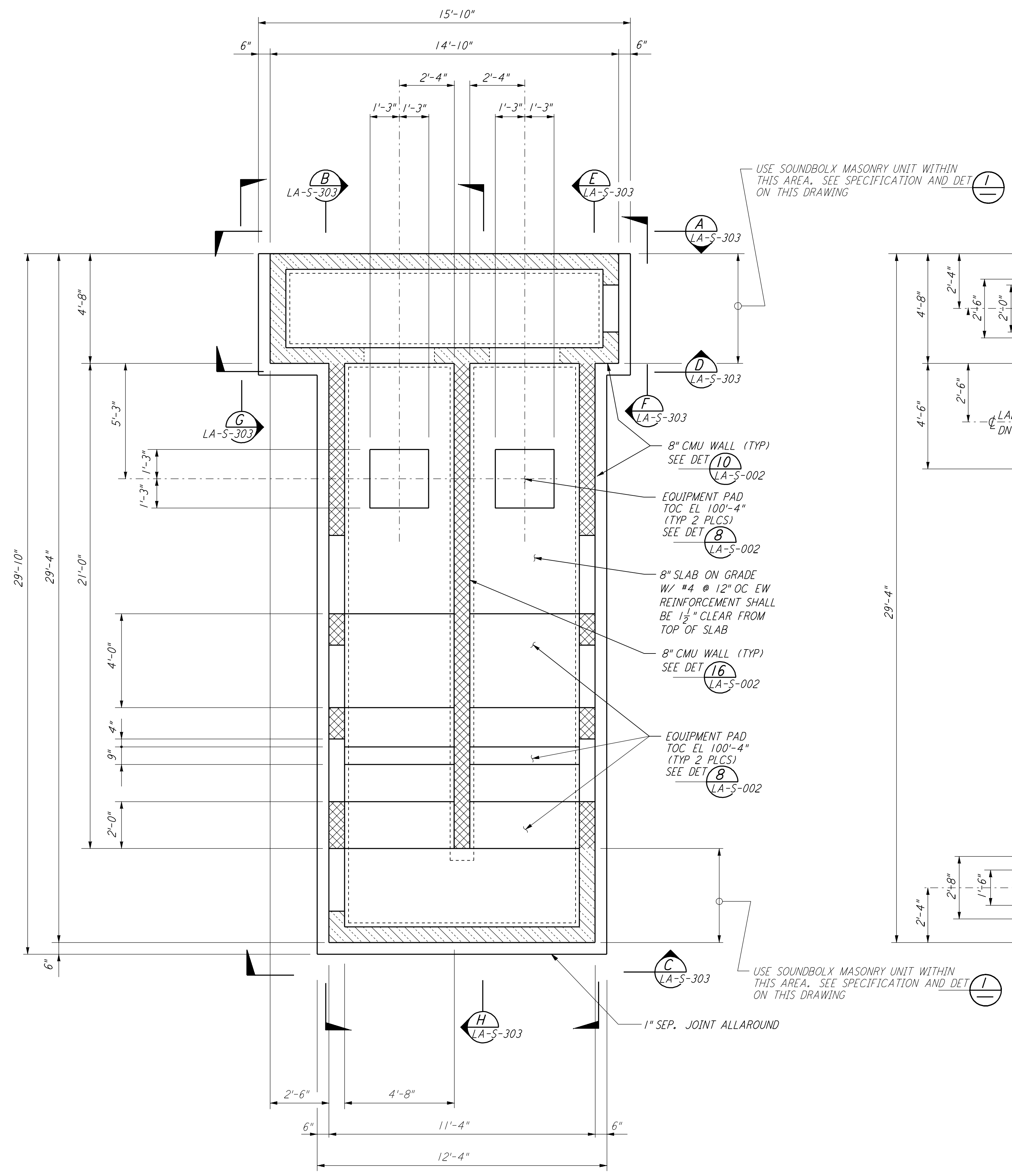
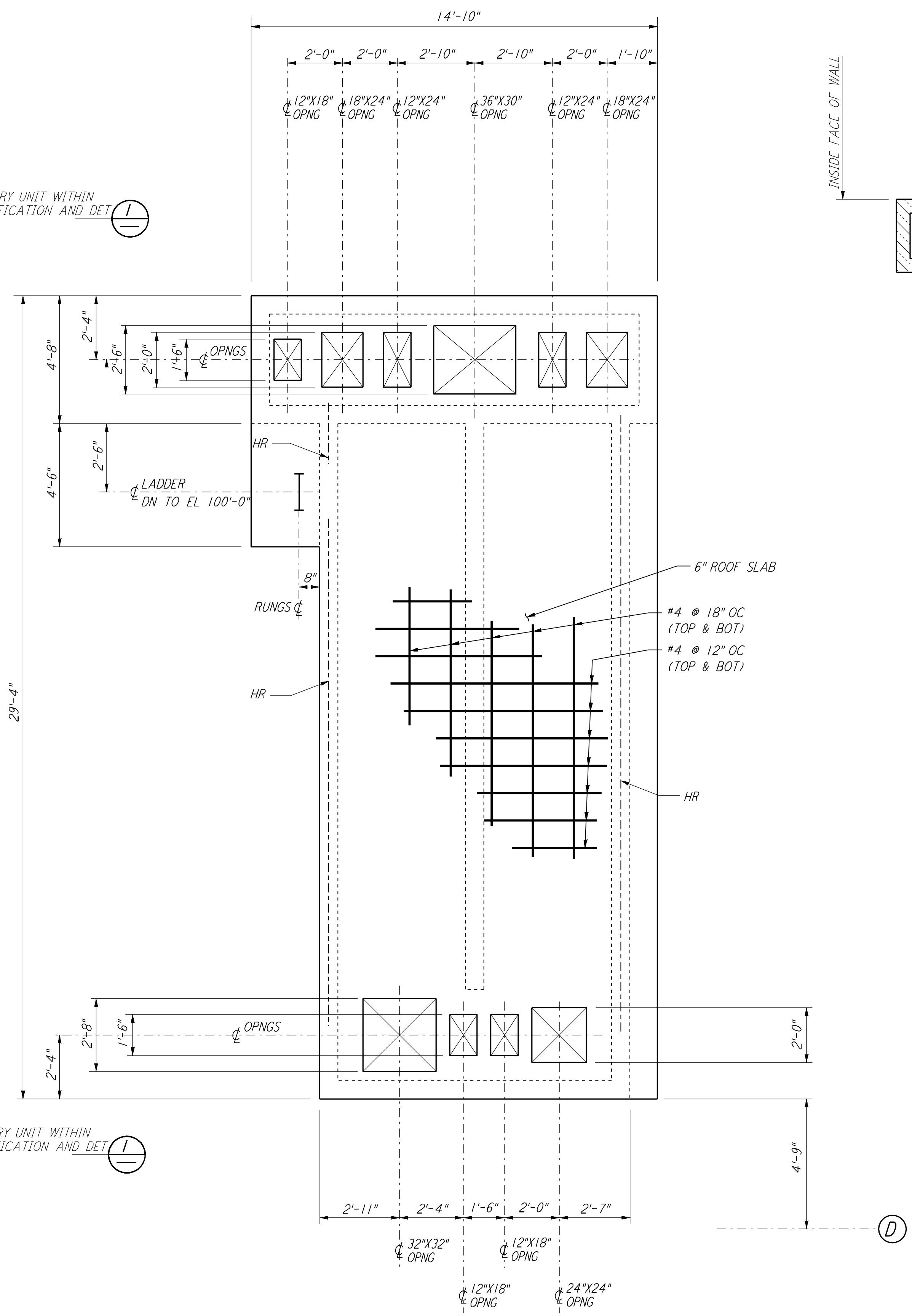


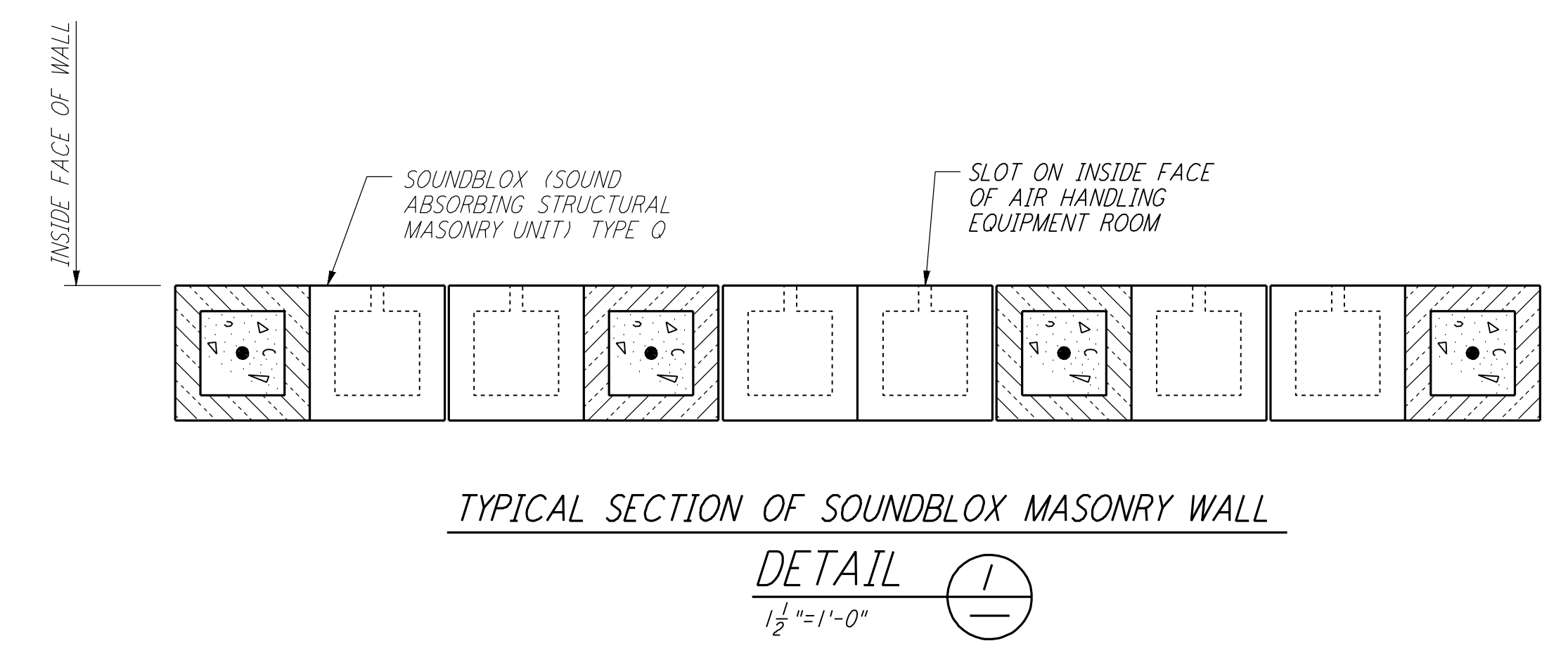
This document and the design it covers are the property of PARSONS. They are loaned only with the borrower's expressed written agreement that they will not be reproduced, copied, loaned, exhibited, or used in any other way, except by written consent from PARSONS to the borrower.



AIR HANDLING UNIT STRUCTURE
FOUNDATION PLAN
 $\frac{3}{8}'' = 1'-0''$

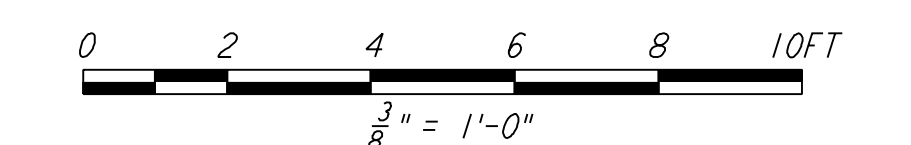


AIR HANDLING UNIT STRUCTURE
CONCRETE ROOF SLAB PLAN
 $\frac{3}{8}'' = 1'-0''$



TYPICAL SECTION OF SOUNDBOLX MASONRY WALL
DETAIL
 $\frac{1}{2}'' = 1'-0''$

- NOTES:**
- LOCATION AND SIZE OF ALL EQUIPMENT PADS ARE FOR BID PURPOSE ONLY. CONTRACTOR SHALL ADJUST TO SUIT ACTUAL EQUIPMENT AND SUBMIT DRAWINGS SHOWING ACTUAL SIZES AND LOCATIONS PRIOR TO CONSTRUCTION.
 - FOR AIR HANDLING UNIT STRUCTURE ORIENTATION, SEE FOUNDATION PLAN ON DRAWING LA-S-301.



LIGO-D960946-01-O

NO.	DATE	BY	CHKD	ENGR	PROJ	DESCRIPTION
1	08-07-98	WA				ISSUED FOR AS-BUILT

ISSUED FOR CONSTRUCTION		
DRAWN	MCS	11-15-96
CHECKED	DDM	11-15-96
ENGINEER	BP	11-15-96
PROJ	TDM	11-15-96
AS-BUILT DRAWINGS		

PARSONS
 100 WEST WALNUT STREET
 PASADENA, CALIFORNIA

LIGO
 CALIFORNIA INSTITUTE OF TECHNOLOGY
 MASSACHUSETTS INSTITUTE OF TECHNOLOGY

LASER INTERFEROMETER
 GRAVITATIONAL-WAVE OBSERVATORY
 SITE NO. 2 - LIVINGSTON, LOUISIANA

TITLE	STRUCTURAL END STATIONS "A" & "B" AIR HANDLING UNIT ENCLOSURE PLANS	SCALE	AS NOTED	CONTRACT NUMBER	PP150969	PROJECT NUMBER	8094
SHEET NUMBER	LA-S-302	REVISIONS					