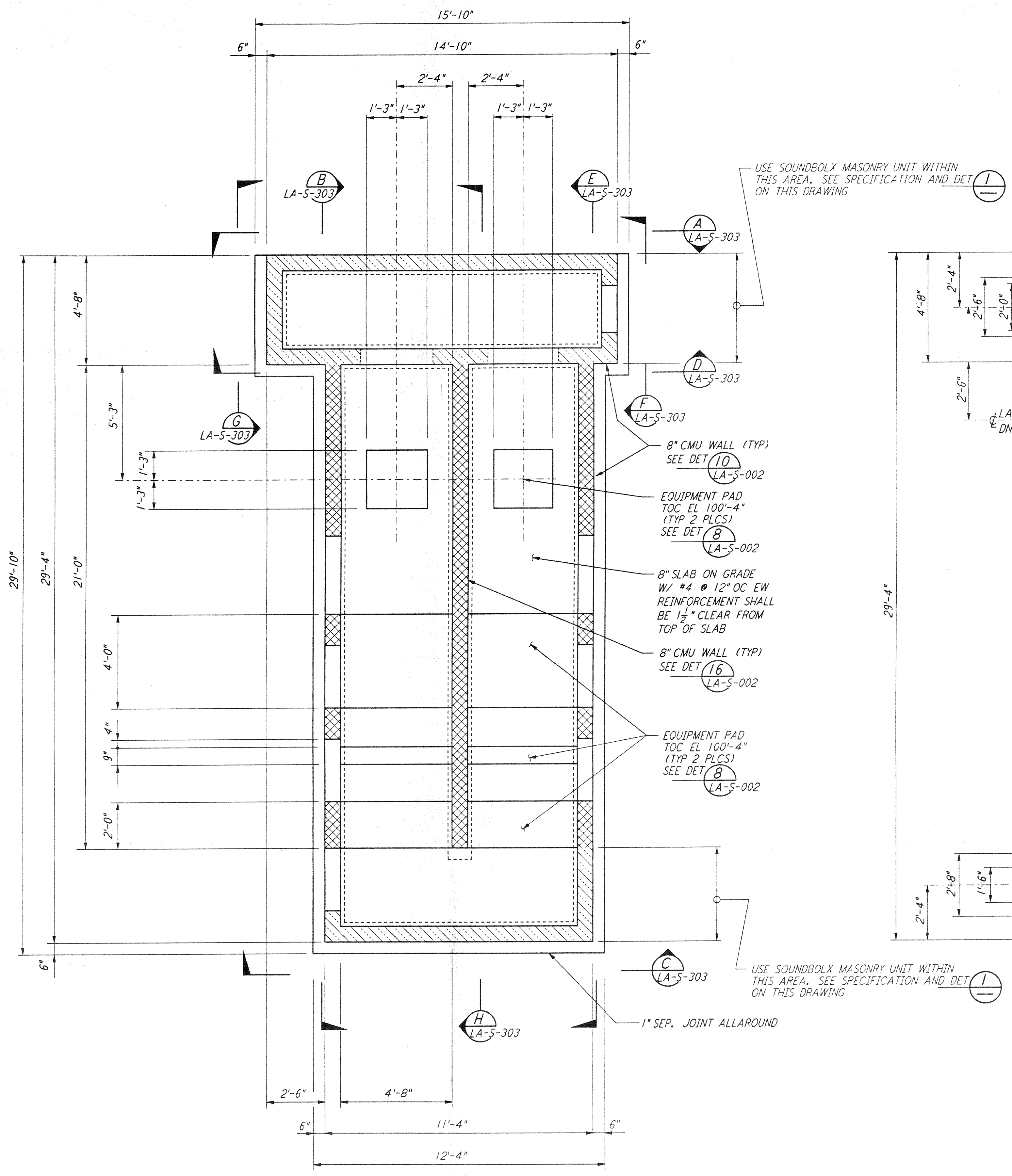
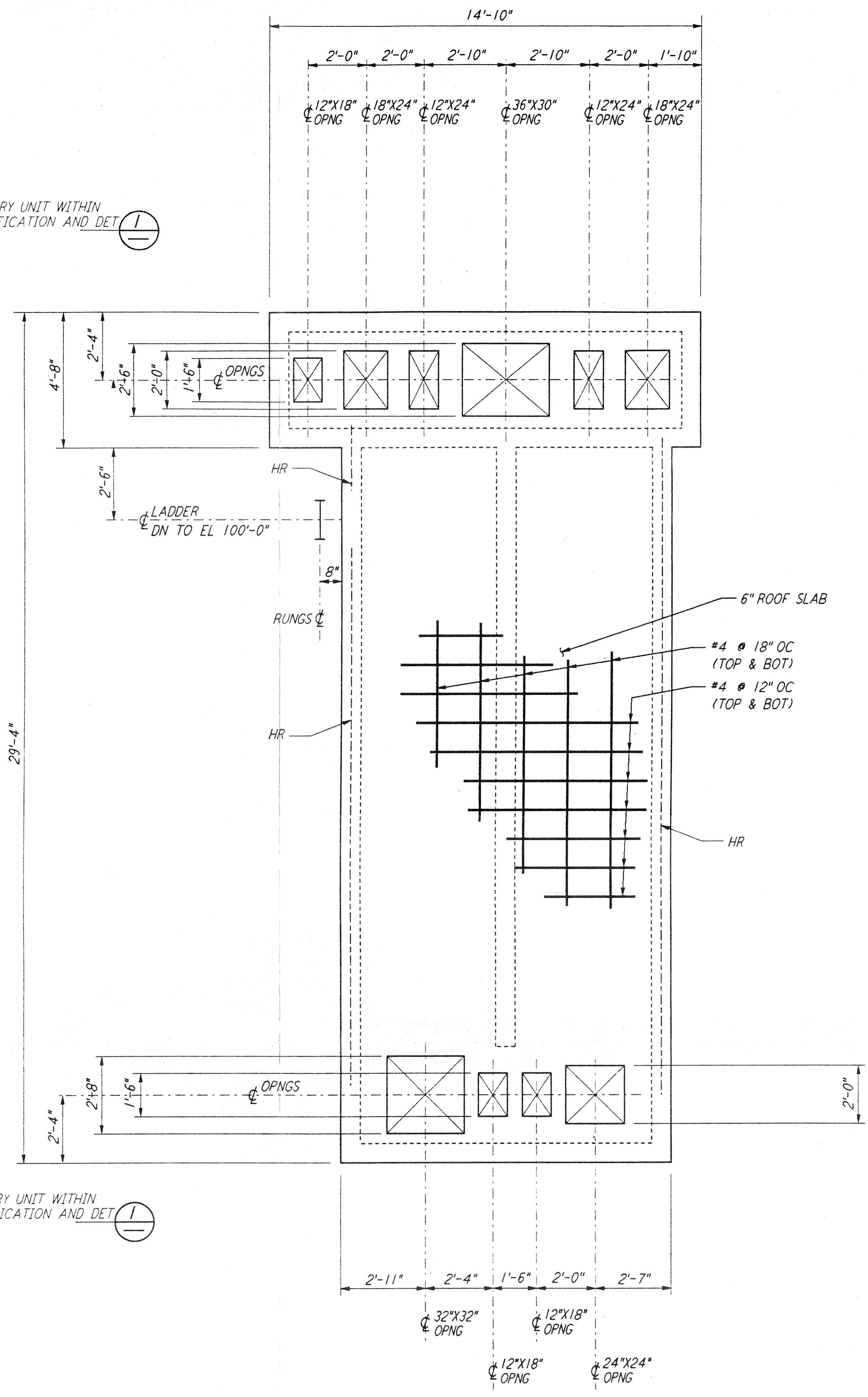


not be reproduced, copied, loaned, exhibited, or used in any other way, except by written consent from PARSONS to the borrower.

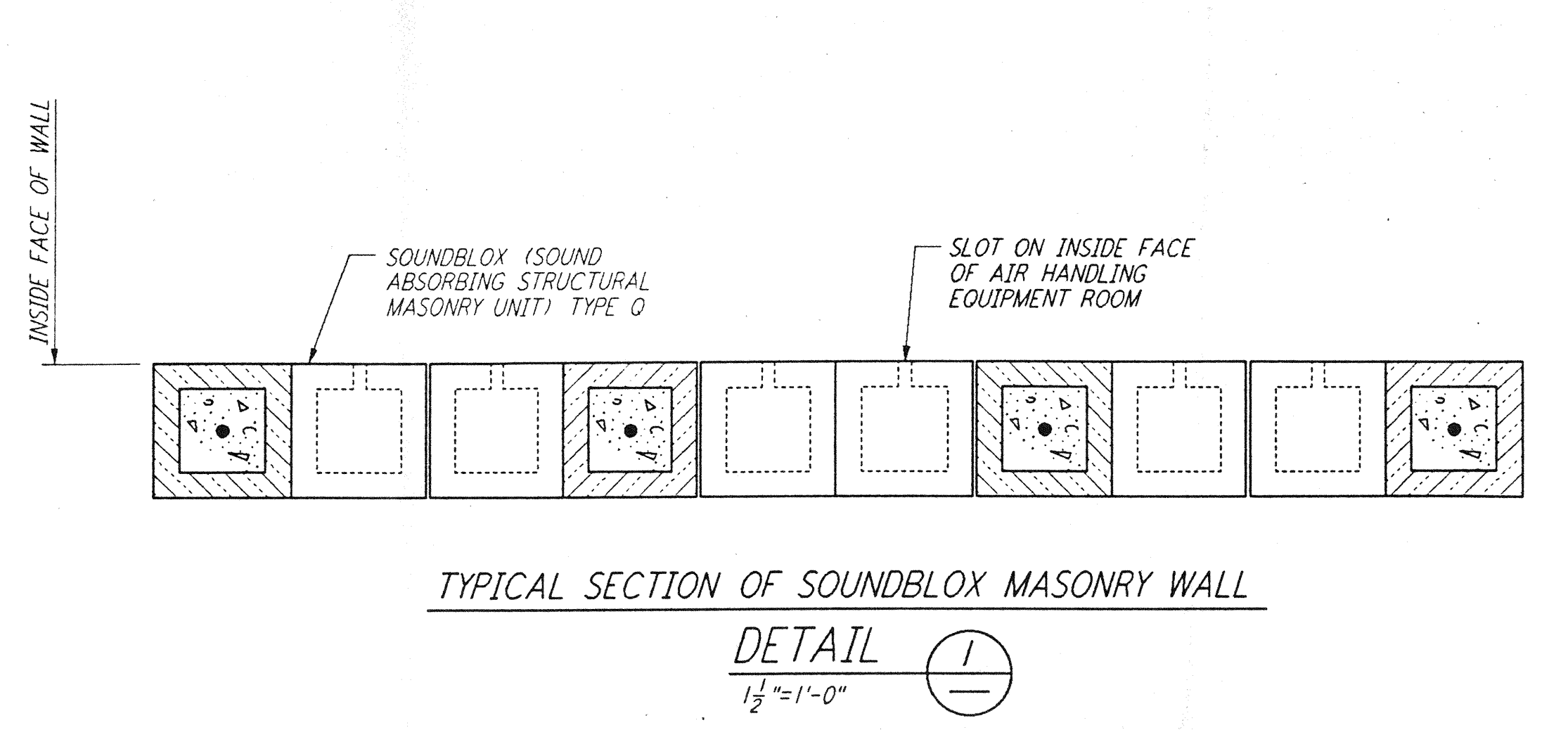
This document and the design it covers are the property of PARSONS. They are loaned only with the borrower's expressed written agreement that they will



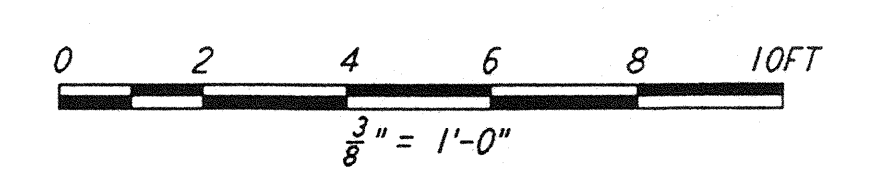
**AIR HANDLING UNIT STRUCTURE
 FOUNDATION PLAN**
 $\frac{3}{8}'' = 1'-0''$



**AIR HANDLING UNIT STRUCTURE
 CONCRETE ROOF SLAB PLAN**
 $\frac{3}{8}'' = 1'-0''$

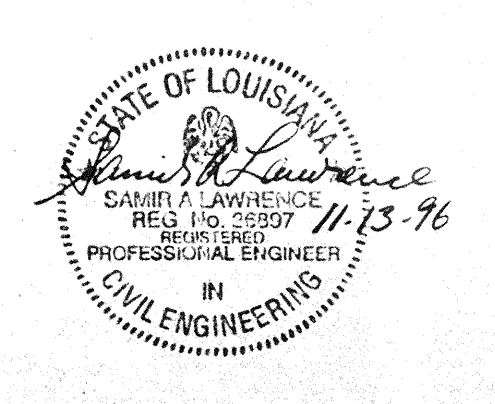


- NOTES:**
1. LOCATION AND SIZE OF ALL EQUIPMENT PADS ARE FOR BID PURPOSE ONLY. CONTRACTOR SHALL ADJUST TO SUIT ACTUAL EQUIPMENT AND SUBMIT DRAWINGS SHOWING ACTUAL SIZES AND LOCATIONS PRIOR TO CONSTRUCTION.
 2. FOR AIR HANDLING UNIT STRUCTURE ORIENTATION, SEE FOUNDATION PLAN ON DRAWING LA-S-301.



REFERENCES		REVISIONS		ISSUED FOR CONSTRUCTION	
DRAWING NO.	DESCRIPTION	NO.	DATE	BY	CHK'D

ISSUED FOR CONSTRUCTION	
NO.	DATE
1	11-15-96
2	11-15-96
3	11-15-96



PARSONS
 100 WEST WALNUT STREET
 PASADENA, CALIFORNIA

LIGO
 CALIFORNIA INSTITUTE OF TECHNOLOGY
 MASSACHUSETTS INSTITUTE OF TECHNOLOGY

**LASER INTERFEROMETER
 GRAVITATIONAL-WAVE OBSERVATORY
 SITE NO. 2 - LIVINGSTON, LOUISIANA**

TITLE	SCALE	CONTRACT NUMBER	PROJECT NUMBER
STRUCTURAL END STATIONS "A" & "B" AIR HANDLING UNIT ENCLOSURE PLANS	AS NOTED	PP150969	8094
SHEET NUMBER		REVISIONS	
LA-S-302			