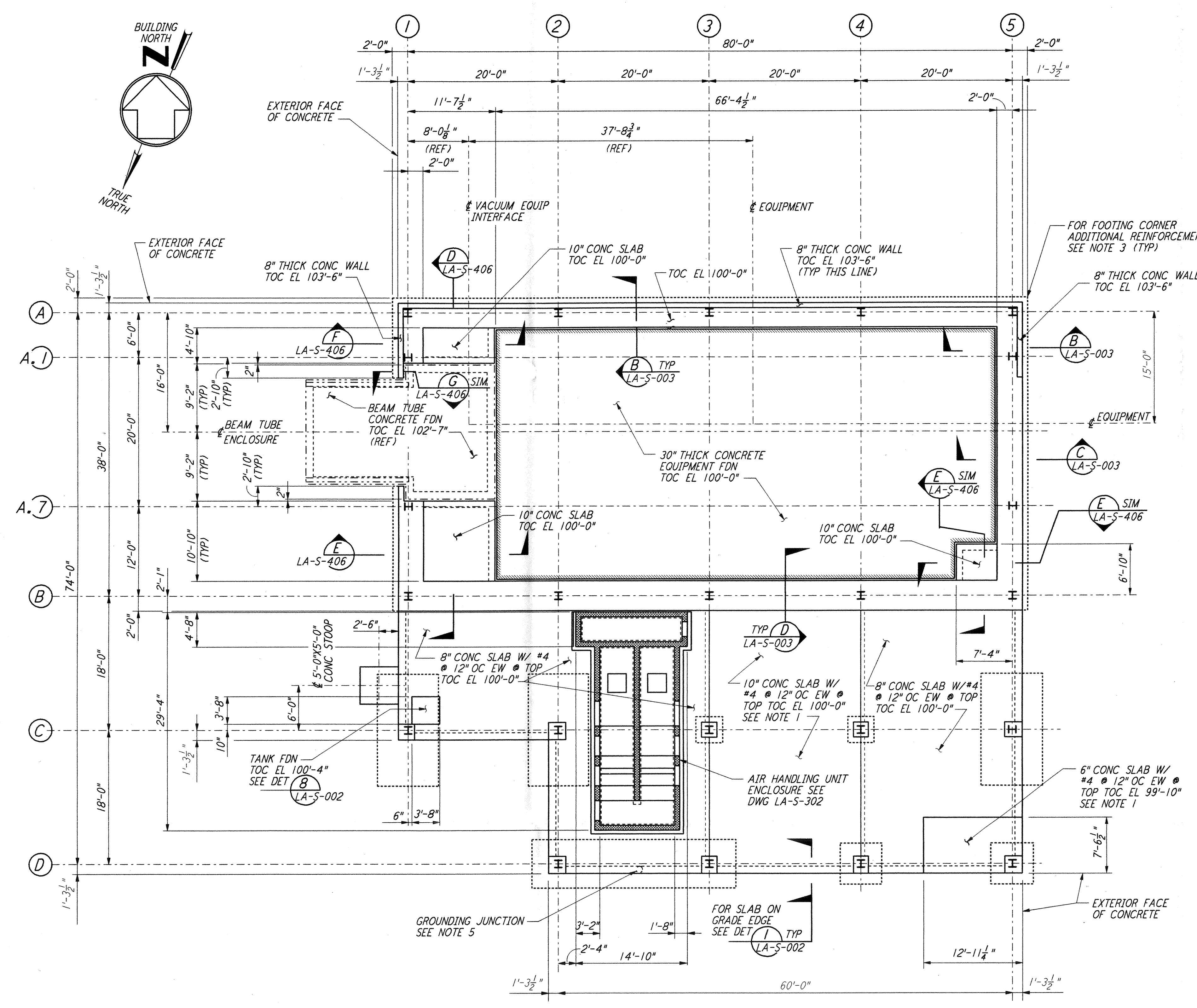


This document and the design it covers are the property of PARSONS. They are loaned only with the borrower's expressed written agreement that they will not be reproduced, copied, loaned, exhibited, or used in any other way, except by written consent from PARSONS to the borrower.



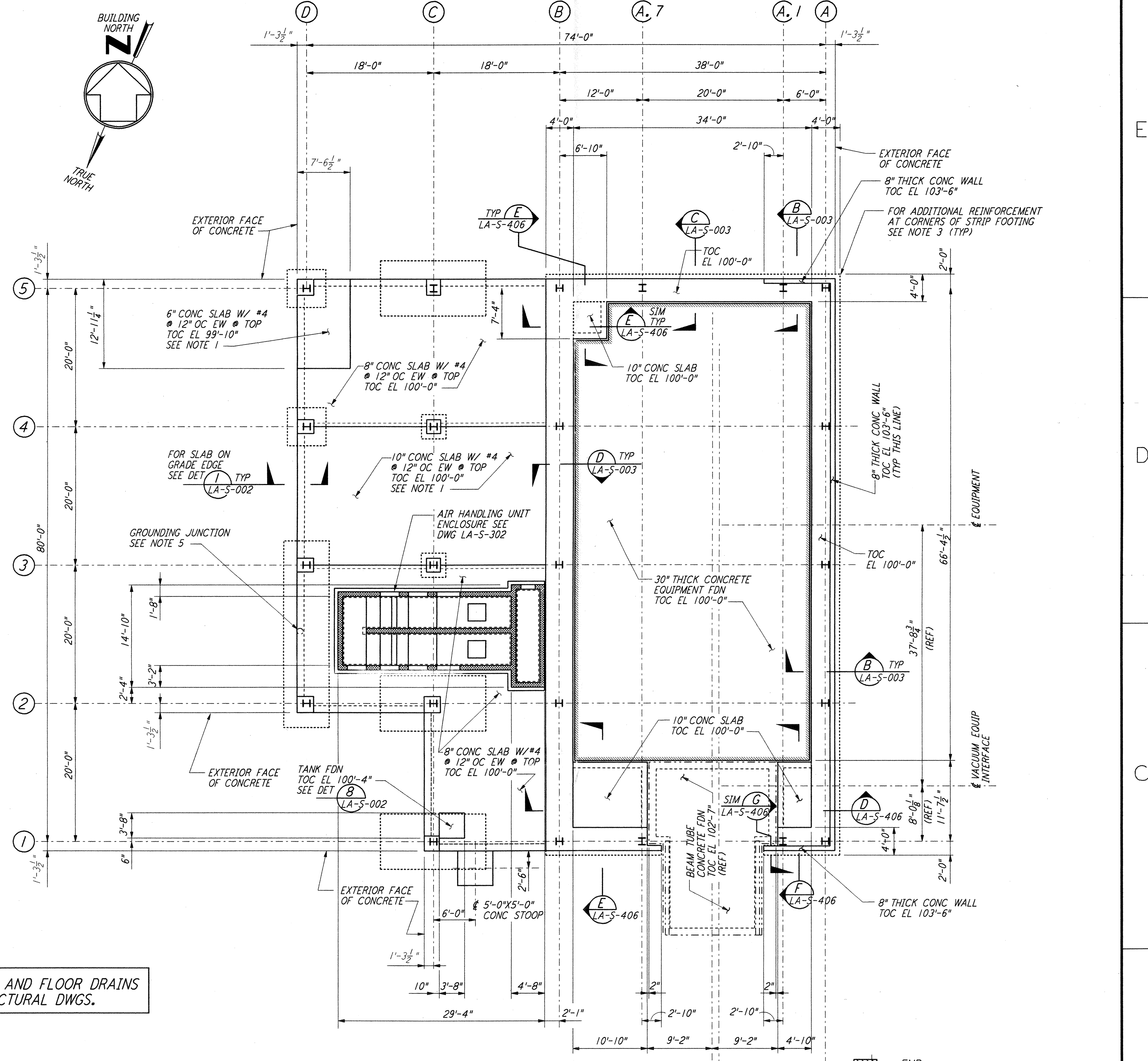
ARM 2
END STATION "A" - FOUNDATION PLAN

$\frac{1}{8}'' = 1'-0''$
 DATUM POINT EL 100'-0" = EL 61.49'

FOR FLOOR SLOPES AND FLOOR DRAINS
 SEE ARCHITECTURAL DWGS.

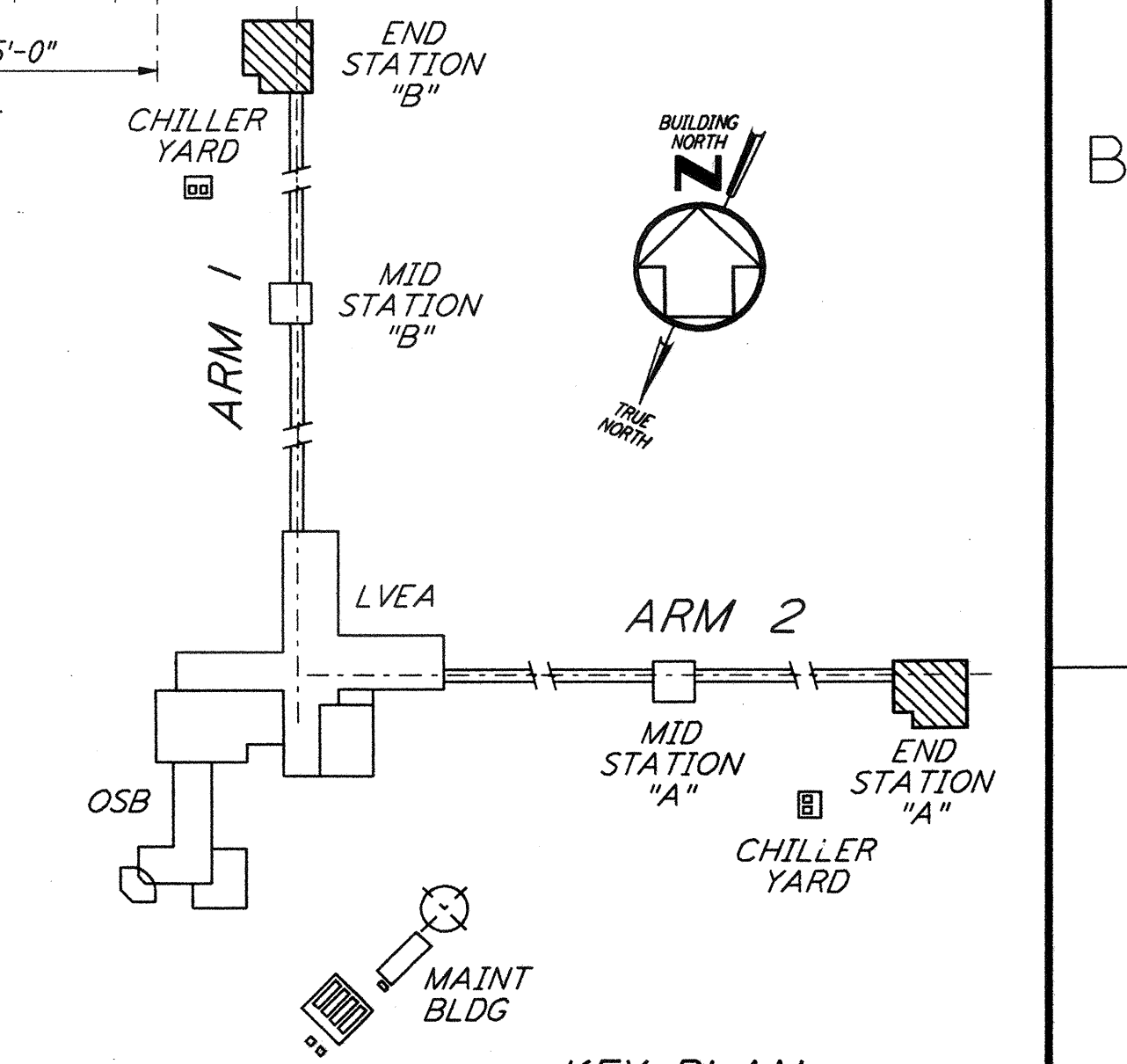
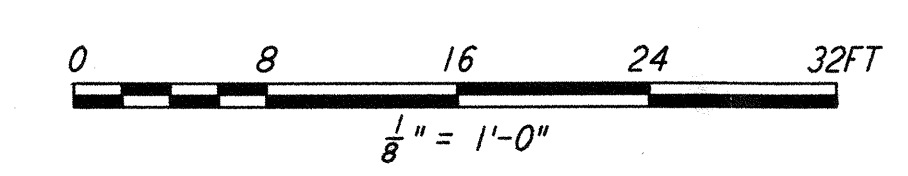
- NOTES:**
- FOR FLOOR DRAIN LOCATIONS AND FLOOR SLOPE SEE ARCHITECTURAL DRAWINGS.
 - FOR FOUNDATION SCHEDULE AND DETAILS, SEE DRAWING LA-S-401.
 - FOR ADDITIONAL REINFORCEMENT AT 90° FOUNDATION DIRECTION CHANGES IN STRIP FOOTING, SEE DETAIL (4) SIM LA-S-003.
 - ALL VERTICAL SURFACES OF FOUNDATION SHALL BE FORMED EXCEPT AT SHEAR KEYS.
 - FOR GROUNDING JUNCTION SEE ELECTRICAL DRAWINGS LA-E-202 & LA-E-212.

- EQUIPMENT FOUNDATION NOTES:**
- CONCRETE FOR EQUIPMENT FOUNDATION SHALL BE PLACED IN MULTIPLE LIFTS OF ONE (1) FOOT OR MORE WITH A FINAL LIFT OF SIX (6) INCHES.
 - FIBERMESH FIBERS (MANUFACTURED BY FIBERMESH, CHATTANOOGA, TENNESSEE OR EQUAL) SHALL BE MIXED WITH CONCRETE FOR THE FINAL LIFT OF SIX (6) INCHES FOR THE EQUIPMENT FOUNDATION.
 - CONCRETE SURFACE SHALL BE CLEANED, RAKED AND ROUGHENED TO DEVELOPE BOND BETWEEN CONCRETE LAYERS.
 - TOP REINFORCEMENT OF EQUIPMENT FOUNDATION SHALL HAVE $\frac{1}{2}''$ CLEAR COVER. CONTRACTOR SHALL TAKE ALL THE NECESSARY PRECAUTIONS TO MAINTAIN UNIFORM COVER.
 - CONTRACTOR SHALL HAVE SPARE PUMPS TO ENSURE UNINTERRUPTED PLACEMENT OF CONCRETE.
 - EQUIPMENT FOUNDATION SHALL BE CURED BY MEMBRANE CURING METHOD AS PER SPECIFICATIONS.



ARM 1
END STATION "B" - FOUNDATION PLAN

$\frac{1}{8}'' = 1'-0''$
 DATUM POINT EL 100'-0" = EL 57.46'



NO.	DATE	BY	CHKD	ENGR	PROJ	DESCRIPTION
1	08-07-98	WA	DDM	BP	TDM	ISSUED FOR AS-BUILT

ISSUED FOR CONSTRUCTION		
DRAWN	MCS	11-15-96
CHECKED	DDM	11-15-96
ENGINEER	BP	11-15-96
PROJ	TDM	11-15-96

**AS-BUILT
DRAWINGS**

PARSONS
 100 WEST WALNUT STREET
 PASADENA, CALIFORNIA

LIGO
 CALIFORNIA INSTITUTE OF TECHNOLOGY
 MASSACHUSETTS INSTITUTE OF TECHNOLOGY

LIGO-D960945-01-0
 LASER INTERFEROMETER
 GRAVITATIONAL-WAVE OBSERVATORY
 SITE NO. 2 - LIVINGSTON, LOUISIANA

TITLE	SCALE	CONTRACT NUMBER	PROJECT NUMBER
STRUCTURAL END STATIONS "A" & "B" FOUNDATION PLANS	AS NOTED	PP150969	8094
SHEET NUMBER		REVISIONS	
LA-S-301			