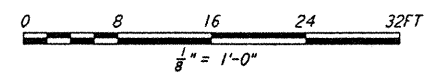
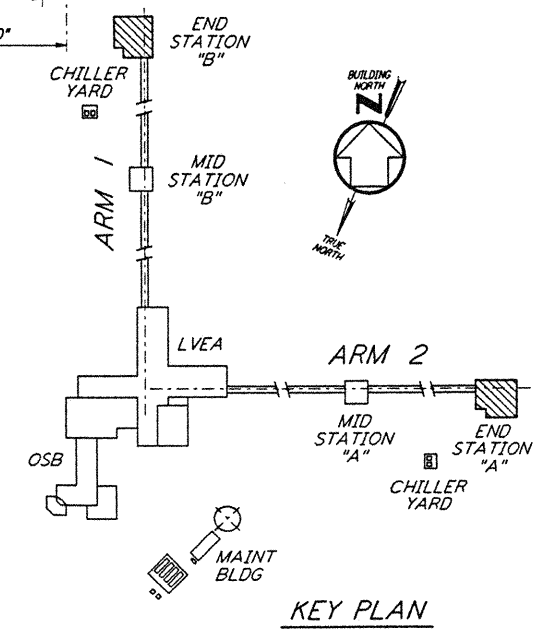


FOR FLOOR SLOPES AND FLOOR DRAINS
 SEE ARCHITECTURAL DWGS.

- NOTES:**
- FOR FLOOR DRAIN LOCATIONS AND FLOOR SLOPE SEE ARCHITECTURAL DRAWINGS.
 - FOR FOUNDATION SCHEDULE AND DETAILS, SEE DRAWING LA-S-401.
 - FOR ADDITIONAL REINFORCEMENT AT 90° FOUNDATION DIRECTION CHANGES IN STRIP FOOTING, SEE DETAIL (A) SIM LA-S-003.
 - ALL VERTICAL SURFACES OF FOUNDATION SHALL BE FORMED EXCEPT AT SHEAR KEYS.
 - FOR GROUNDING JUNCTION SEE ELECTRICAL DRAWINGS LA-E-202 & LA-E-212.

- EQUIPMENT FOUNDATION NOTES:**
- CONCRETE FOR EQUIPMENT FOUNDATION SHALL BE PLACED IN MULTIPLE LIFTS OF ONE (1) FOOT OR MORE WITH A FINAL LIFT OF SIX (6) INCHES.
 - FIBERMESH FIBERS (MANUFACTURED BY FIBERMESH, CHATTANOOGA, TENNESSEE OR EQUAL) SHALL BE MIXED WITH CONCRETE FOR THE FINAL LIFT OF SIX (6) INCHES FOR THE EQUIPMENT FOUNDATION.
 - CONCRETE SURFACE SHALL BE CLEANED, RAKED AND ROUGHENED TO DEVELOPE BOND BETWEEN CONCRETE LAYERS.
 - TOP REINFORCEMENT OF EQUIPMENT FOUNDATION SHALL HAVE 1½" CLEAR COVER. CONTRACTOR SHALL TAKE ALL THE NECESSARY PRECAUTIONS TO MAINTAIN UNIFORM COVER.
 - CONTRACTOR SHALL HAVE SPARE PUMPS TO ENSURE UNINTERRUPTED PLACEMENT OF CONCRETE.
 - EQUIPMENT FOUNDATION SHALL BE CURED BY MEMBRANE CURING METHOD AS PER SPECIFICATIONS.



This document and the design it covers are the property of PARSONS. They are loaned only with the borrower's expressed written agreement that they will not be reproduced, copied, loaned, exhibited, or used in any other way, except by written consent from PARSONS to the borrower.

REFERENCES NO. DATE BY CHKD ENGR PROJ DESCRIPTION	ISSUED FOR CONSTRUCTION DRAWN MCS 11-15-96 CHECKED [Signature] 11-15-96 ENGINEER [Signature] 11-15-96 PROJ [Signature] 11/15/96			STATE OF LOUISIANA SAMIR A. KHARBEH REGISTERED PROFESSIONAL ENGINEER IN CIVIL ENGINEERING NO. 12345	PARSONS 100 WEST WALNUT STREET PASADENA, CALIFORNIA	LIGO CALIFORNIA INSTITUTE OF TECHNOLOGY MASSACHUSETTS INSTITUTE OF TECHNOLOGY	LASER INTERFEROMETER GRAVITATIONAL-WAVE OBSERVATORY SITE NO. 2 - LIVINGSTON, LOUISIANA	
	TITLE STRUCTURAL END STATIONS "A" & "B" FOUNDATION PLANS		AS NOTED PPI50969 8094					
	SHEET NUMBER LA-S-301		REVISIONS					