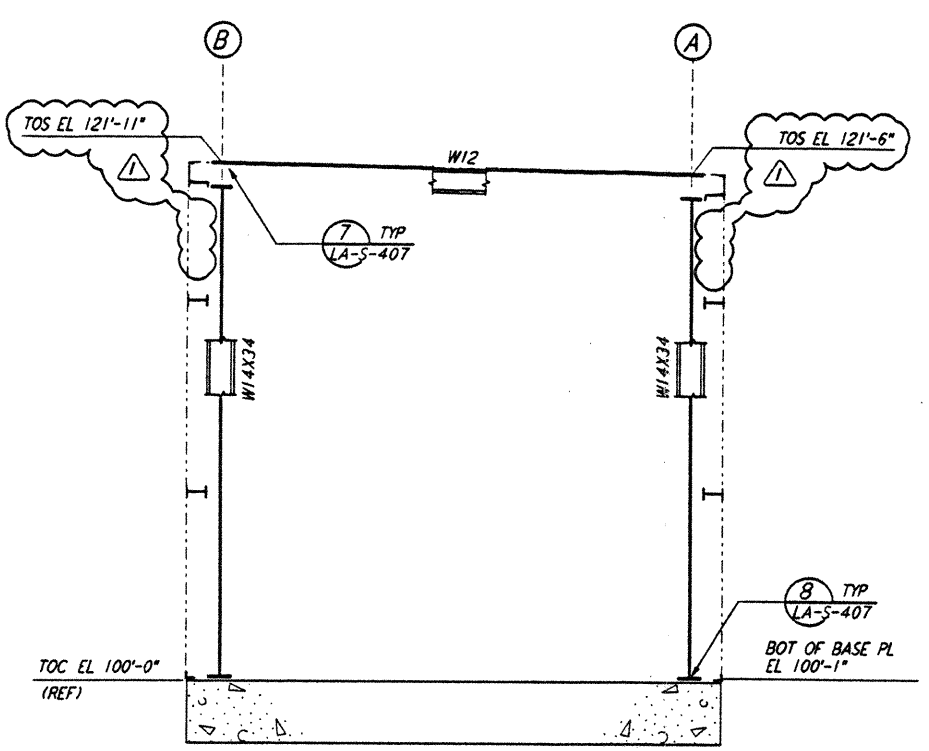
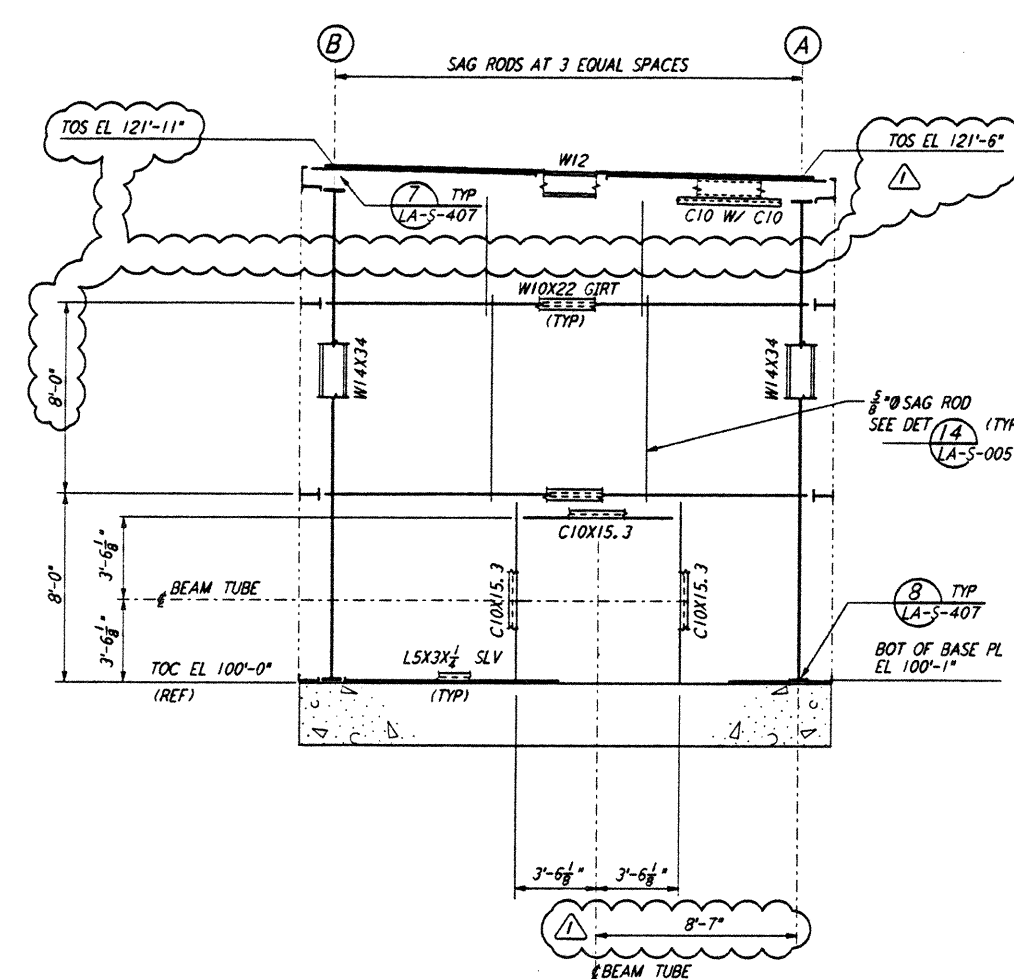


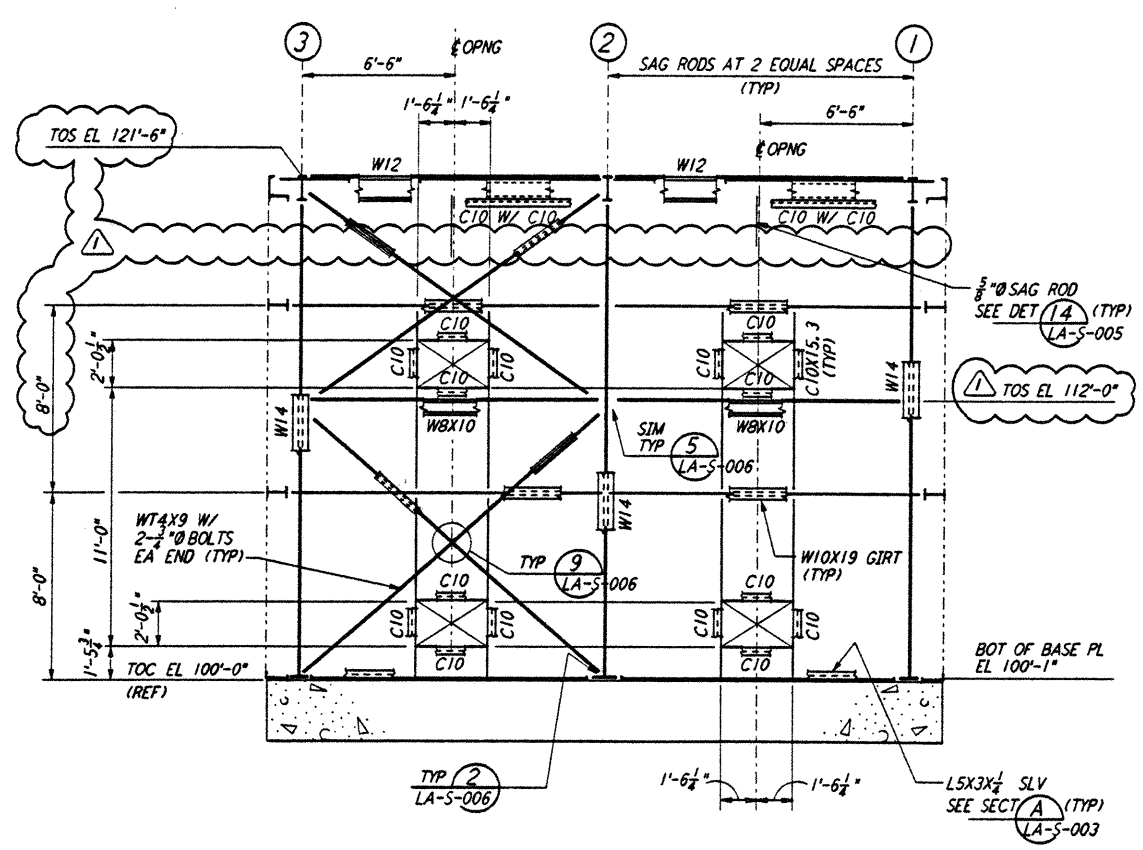
LOOKING EAST - FOR MID STATION "A" ON ARM 2
 LOOKING SOUTH - FOR MID STATION "B" ON ARM 1
 ELEVATION AT COLUMN LINE 1
 $\frac{1}{4}'' = 1'-0''$



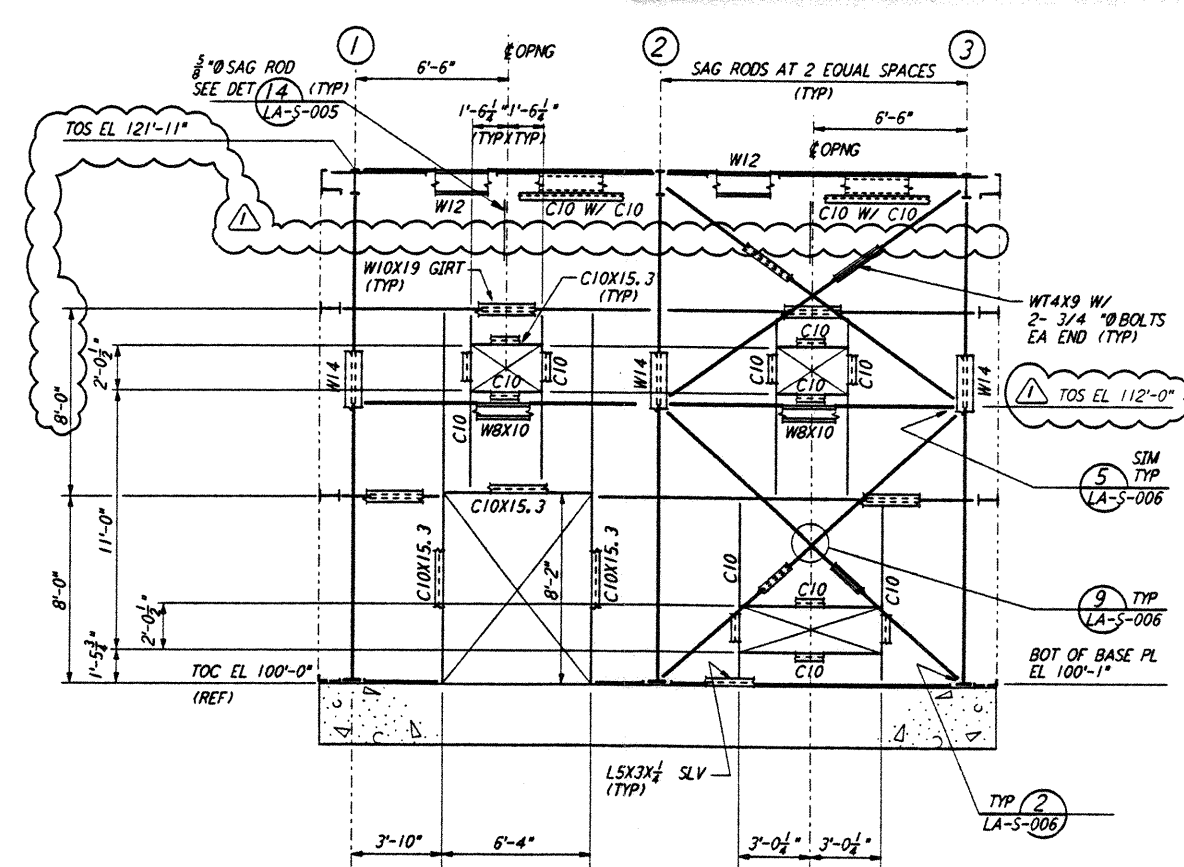
LOOKING WEST - FOR MID STATION "A" ON ARM 2
 LOOKING NORTH - FOR MID STATION "B" ON ARM 1
 ELEVATION AT COLUMN LINE 2
 $\frac{1}{4}'' = 1'-0''$



LOOKING WEST - FOR MID STATION "A" ON ARM 2
 LOOKING NORTH - FOR MID STATION "B" ON ARM 1
 ELEVATION AT COLUMN LINE 3
 $\frac{1}{4}'' = 1'-0''$

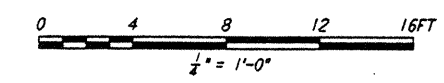


LOOKING SOUTH - FOR MID STATION "A" ON ARM 2
 LOOKING EAST - FOR MID STATION "B" ON ARM 1
 ELEVATION AT COLUMN LINE A
 $\frac{1}{4}'' = 1'-0''$



LOOKING NORTH - FOR MID STATION "A" ON ARM 2
 LOOKING WEST - FOR MID STATION "B" ON ARM 1
 ELEVATION AT COLUMN LINE B
 $\frac{1}{4}'' = 1'-0''$

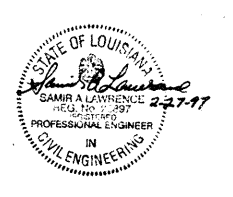
- NOTES:
- FOR GENERAL NOTES, ABBREVIATIONS AND SYMBOLS, SEE DRAWING LA-S-001.
 - FOR CHANNEL, GIRT AND EAVE STRUT CONNECTION DETAILS, SEE DRAWING LA-S-005.
 - FOR BASE ANGLE (LSX3) CONNECTION, SEE (A) LA-S-003



LIGO-D960944-01-0

NO.	DATE	BY	CHKD	ENGR	PROJ	DESCRIPTION
1	2-28-97	RM	A.P.	HT		REV ELEV AT LN 1, 2, 3, A & B

ISSUED FOR CONSTRUCTION	DRAWN	MCS	11-15-96
CHECKED	DDM	11-15-96	
ENGINEER	BP	11-15-96	
PROJ	TDM	11-15-96	



PARSONS
 100 WEST WALNUT STREET
 PASADENA, CALIFORNIA

LIGO
 CALIFORNIA INSTITUTE OF TECHNOLOGY
 MASSACHUSETTS INSTITUTE OF TECHNOLOGY

LASER INTERFEROMETER
 GRAVITATIONAL-WAVE OBSERVATORY
 SITE NO. 2 - LIVINGSTON, LOUISIANA

STRUCTURAL
 MID STATIONS "A" & "B"
 FRAMING ELEVATIONS

AS NOTED PPI 150969 8094
LA-S-203

This document and the design it covers are the property of PARSONS. They are loaned only with the borrower's expressed written agreement that they will not be reproduced, copied, loaned, exhibited, or used in any other way, except by written consent from PARSONS to the borrower.

This document and the design it covers are the property of PARSONS. They are loaned only with the borrower's expressed written agreement that they will not be reproduced, copied, loaned, exhibited, or used in any other way, except by written consent from PARSONS to the borrower.

I:\ligo\site2\stn\las203.dwg

E
D
C
B
A