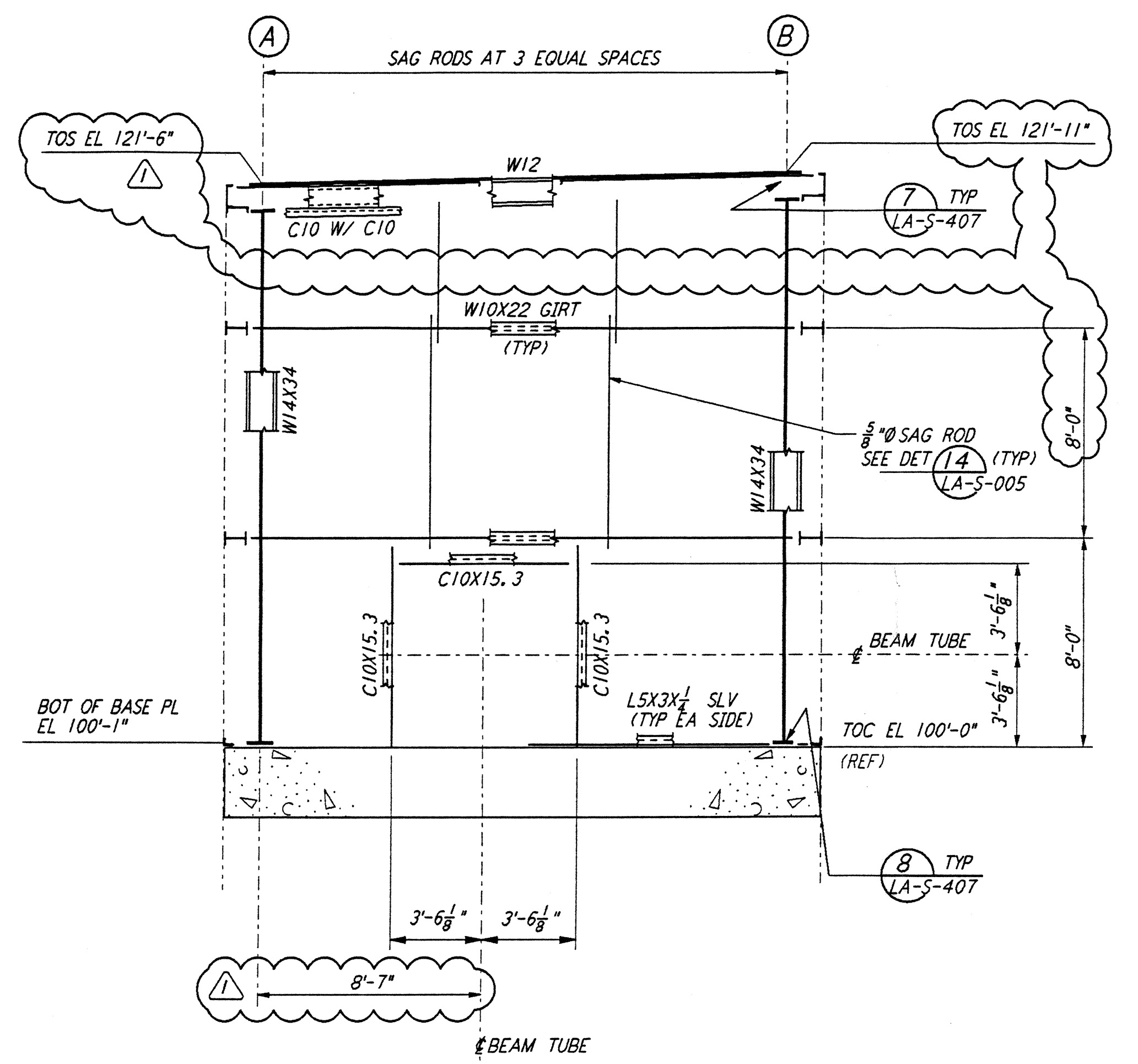
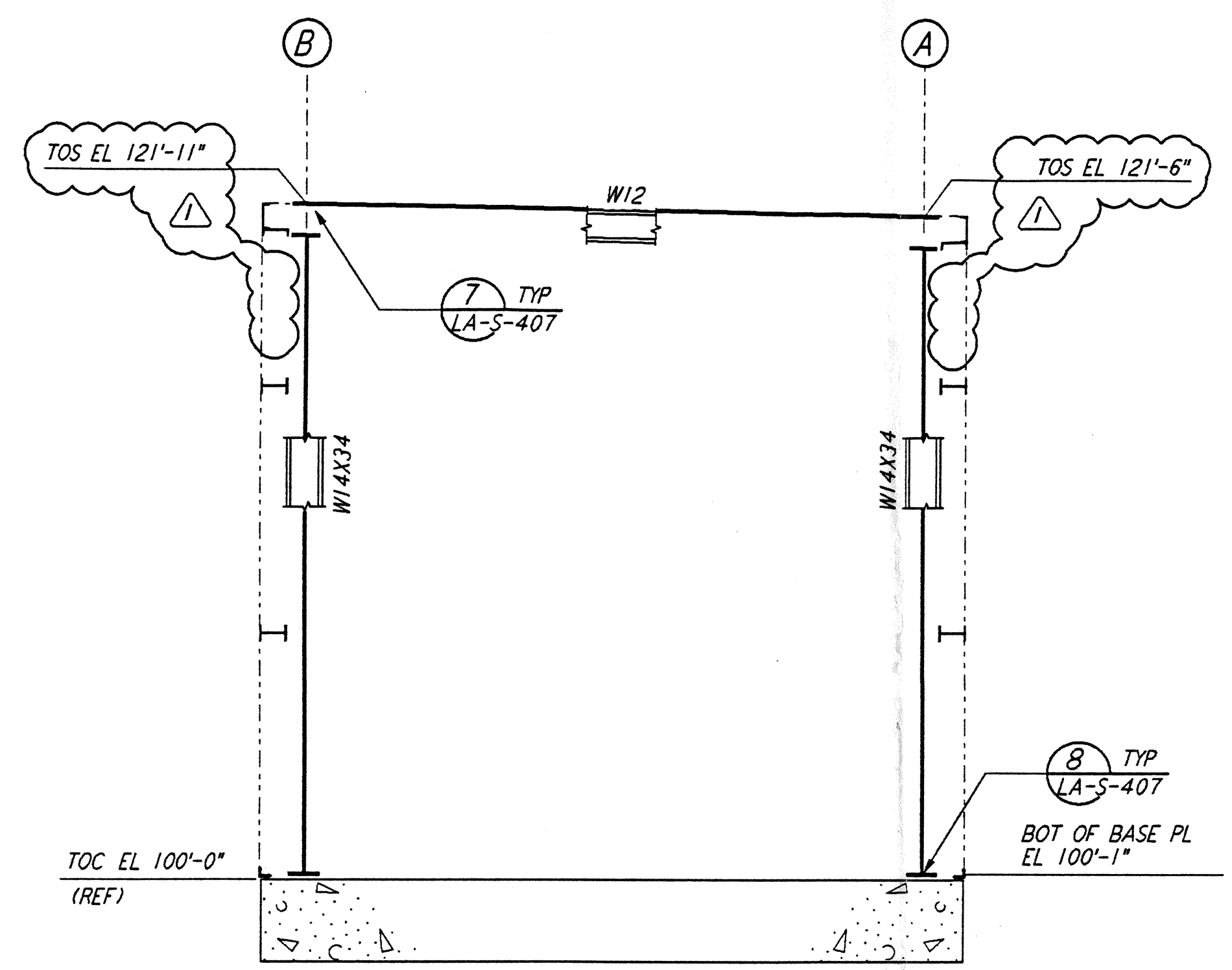


This document and the design it covers are the property of PARSONS. They are loaned only with the borrower's expressed written agreement that they will not be reproduced, copied, loaned, exhibited, or used in any other way, except by written consent from PARSONS to the borrower.

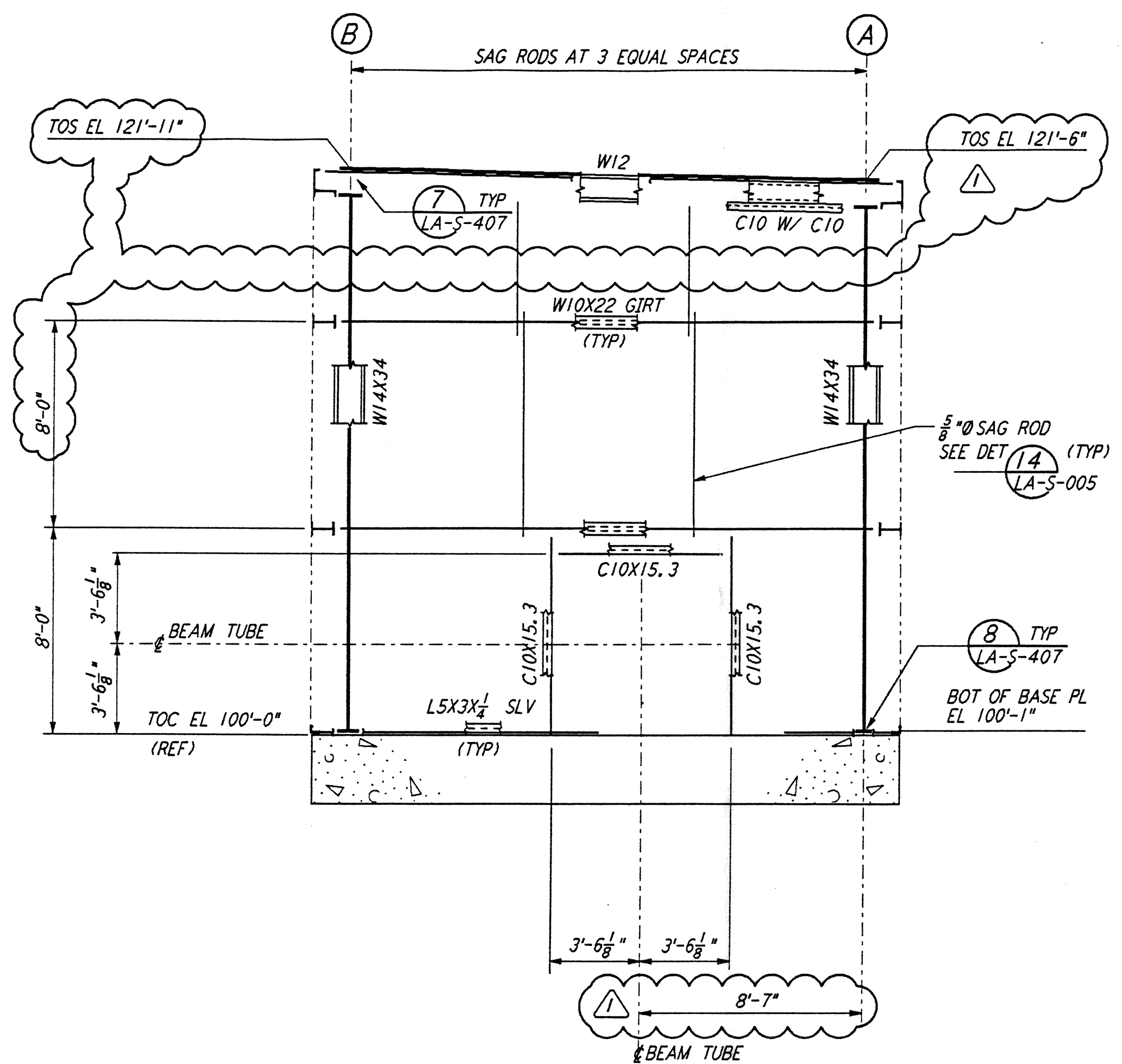
This document and the design it covers are the property of PARSONS. They are loaned only with the borrower's expressed written agreement that they will not be reproduced, copied, loaned, exhibited, or used in any other way, except by written consent from PARSONS to the borrower.



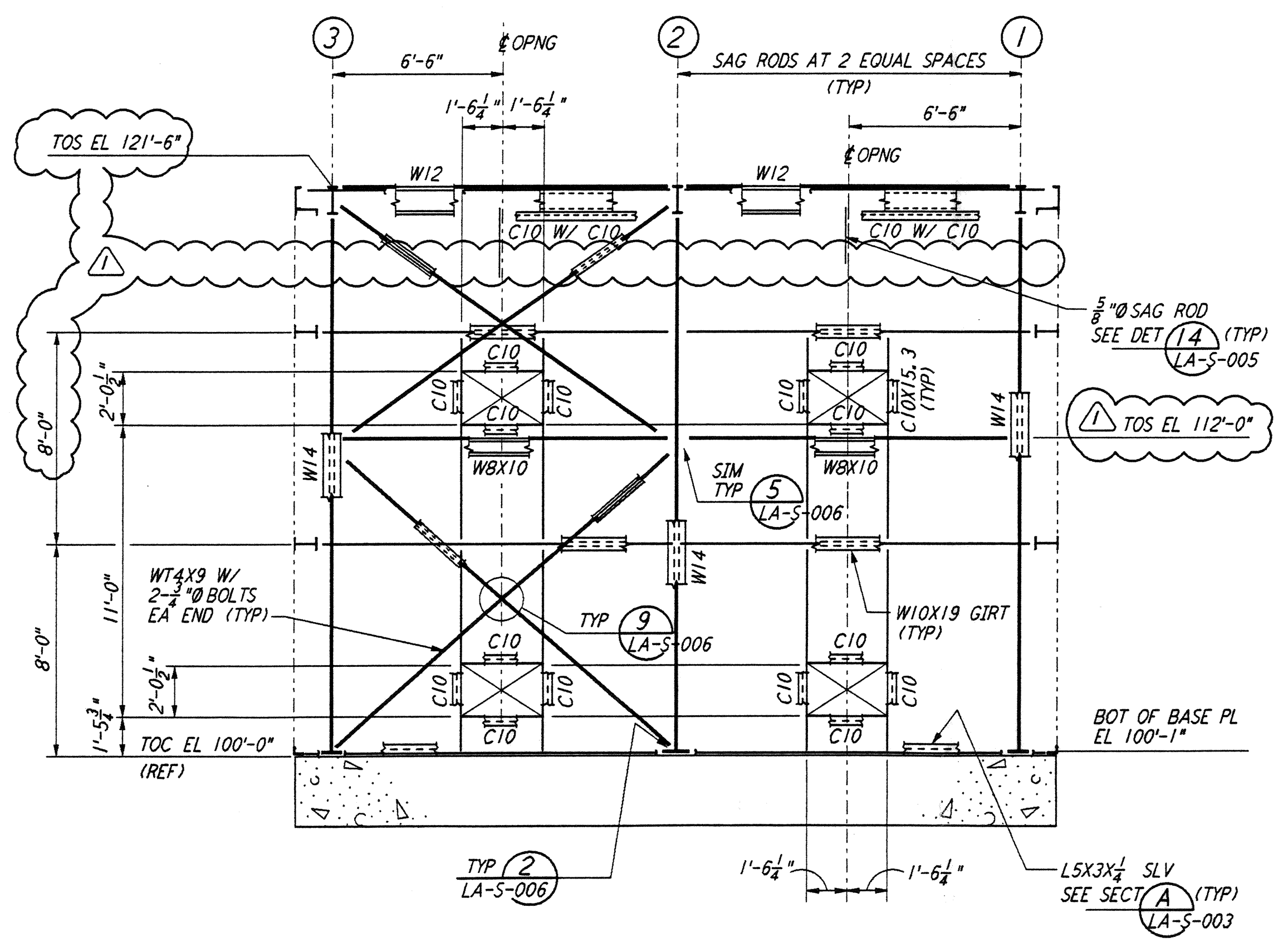
LOOKING EAST - FOR MID STATION "A" ON ARM 2
 LOOKING SOUTH - FOR MID STATION "B" ON ARM 1
 ELEVATION AT COLUMN LINE 1
 $\frac{1}{4}'' = 1'-0''$



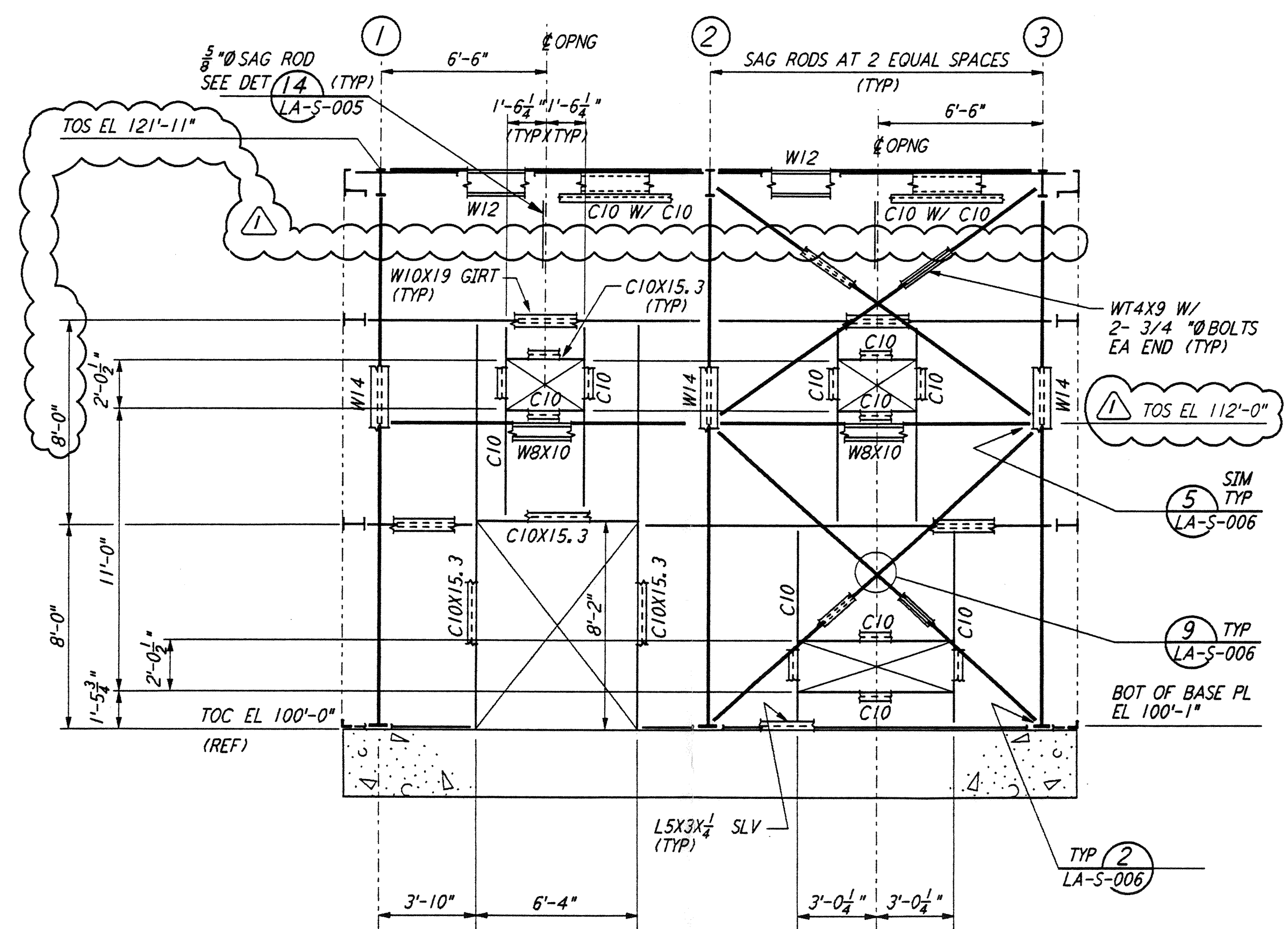
LOOKING WEST - FOR MID STATION "A" ON ARM 2
 LOOKING NORTH - FOR MID STATION "B" ON ARM 1
 ELEVATION AT COLUMN LINE 2
 $\frac{1}{4}'' = 1'-0''$



LOOKING WEST - FOR MID STATION "A" ON ARM 2
 LOOKING NORTH - FOR MID STATION "B" ON ARM 1
 ELEVATION AT COLUMN LINE 3
 $\frac{1}{4}'' = 1'-0''$

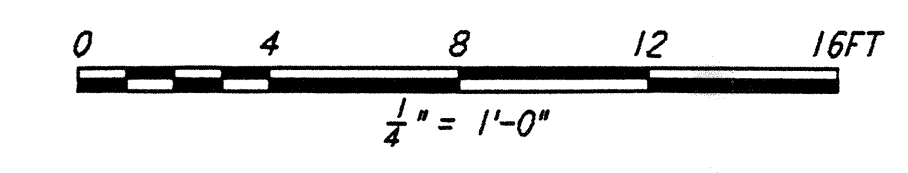


LOOKING SOUTH - FOR MID STATION "A" ON ARM 2
 LOOKING EAST - FOR MID STATION "B" ON ARM 1
 ELEVATION AT COLUMN LINE A
 $\frac{1}{4}'' = 1'-0''$



LOOKING NORTH - FOR MID STATION "A" ON ARM 2
 LOOKING WEST - FOR MID STATION "B" ON ARM 1
 ELEVATION AT COLUMN LINE B
 $\frac{1}{4}'' = 1'-0''$

- NOTES:**
- FOR GENERAL NOTES, ABBREVIATIONS AND SYMBOLS, SEE DRAWING LA-S-001.
 - FOR CHANNEL, GIRT AND EAVE STRUT CONNECTION DETAILS, SEE DRAWING LA-S-005.
 - FOR BASE ANGLE (LSX) CONNECTION, SEE (A) LA-S-003.

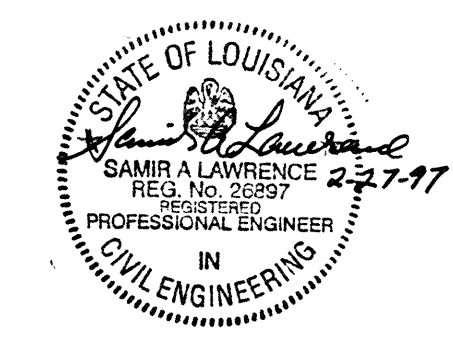


LIGO-D960944-01-0

NO.	DATE	BY	CHKD	ENGR	PROJ	DESCRIPTION
1	2-28-97	RM	A.B	MP		REV ELEV AT LN 1, 2, 3, A & B

NO.	DATE	BY	CHKD	ENGR	PROJ	DESCRIPTION
1	2-28-97	RM	A.B	MP		REV ELEV AT LN 1, 2, 3, A & B

ISSUED FOR CONSTRUCTION	
DRAWN	MCS 11-15-96
CHECKED	DDM 11-15-96
ENGINEER	BP 11-15-96
PROJ	TDM 11-15-96



PARSONS

100 WEST WALNUT STREET
PASADENA, CALIFORNIA

LIGO

CALIFORNIA INSTITUTE OF TECHNOLOGY
MASSACHUSETTS INSTITUTE OF TECHNOLOGY

LASER INTERFEROMETER
GRAVITATIONAL-WAVE OBSERVATORY
SITE NO. 2 - LIVINGSTON, LOUISIANA

**STRUCTURAL
MID STATIONS "A" & "B"
FRAMING ELEVATIONS**

SCALE: AS NOTED
CONTRACT NUMBER: PPI50969
PROJECT NUMBER: 8094

LA-S-203