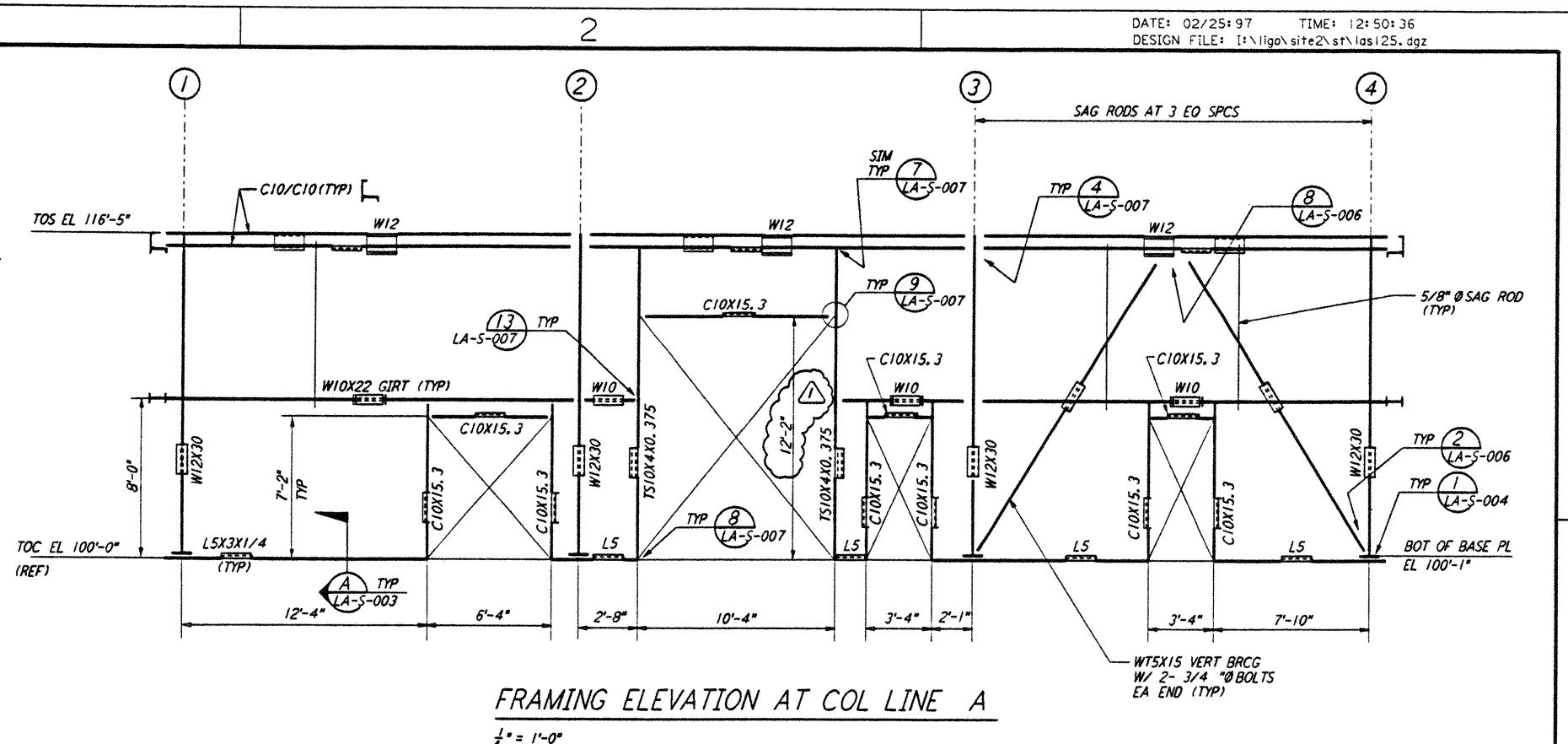
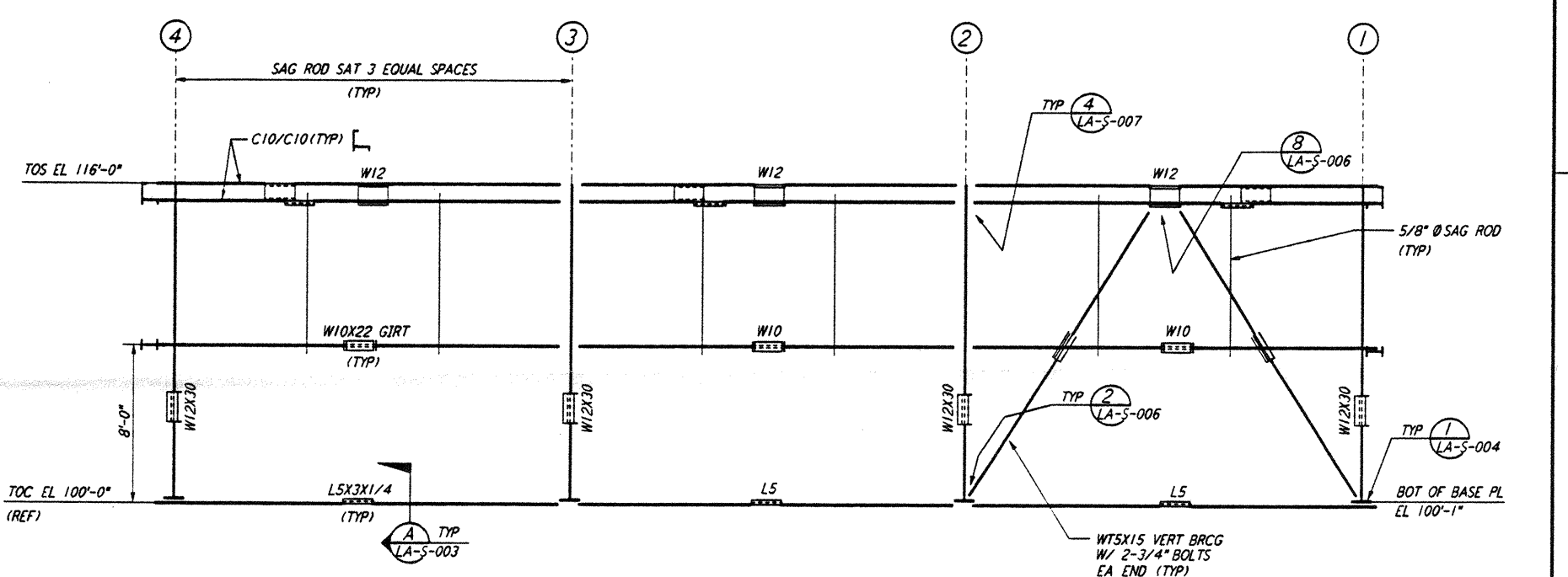


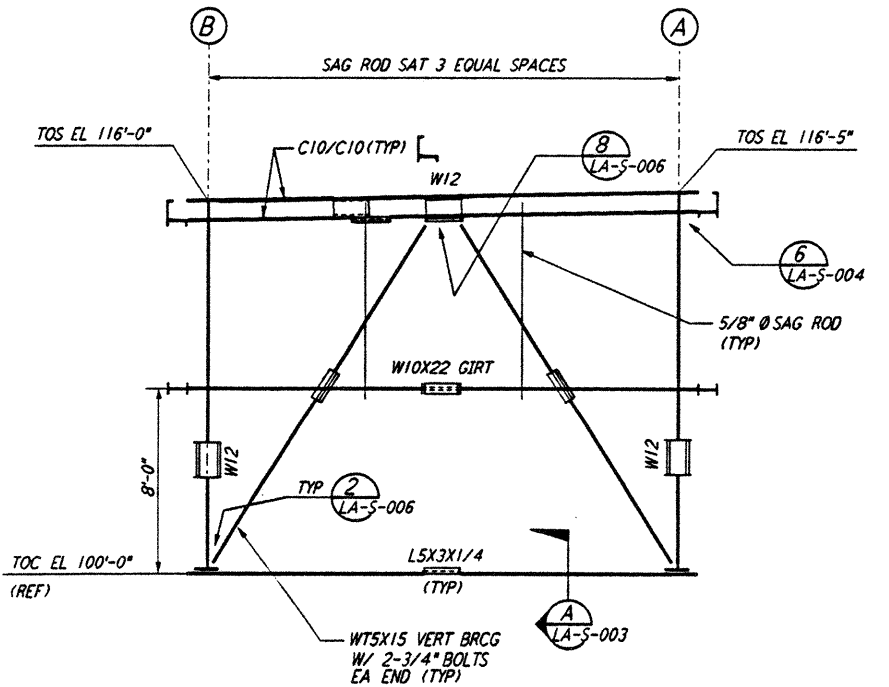
ROOF FRAMING PLAN
 $\frac{1}{4}'' = 1'-0''$



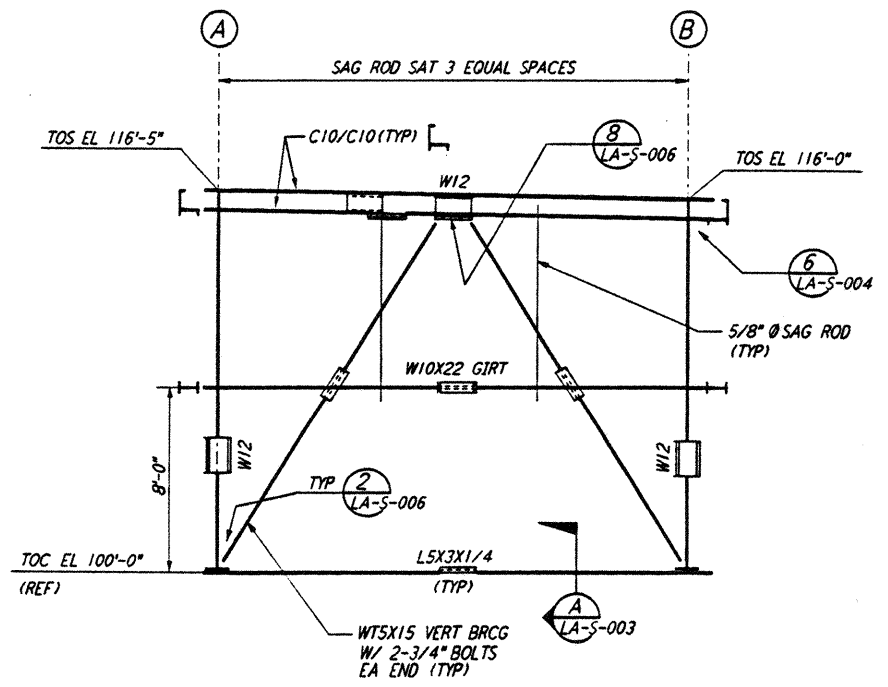
FRAMING ELEVATION AT COL LINE A
 $\frac{1}{4}'' = 1'-0''$



FRAMING ELEVATION AT COL LINE B
 $\frac{1}{4}'' = 1'-0''$

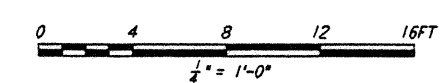
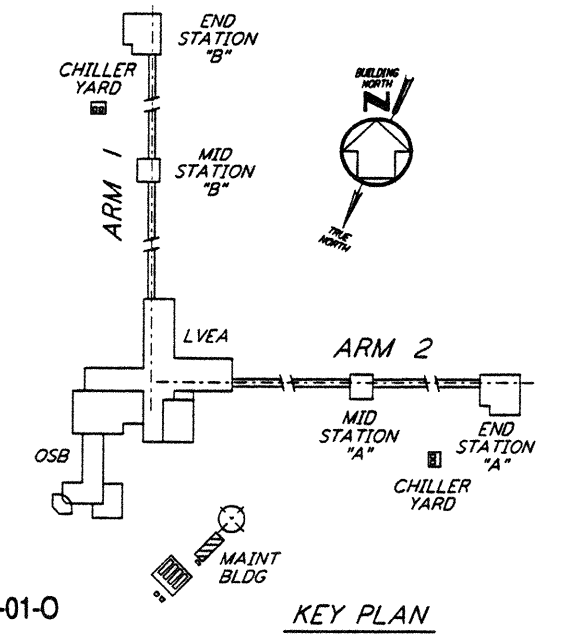


FRAMING ELEVATION AT COL LINE 1
 $\frac{1}{4}'' = 1'-0''$



FRAMING ELEVATION AT COL LINE 4
 $\frac{1}{4}'' = 1'-0''$

- NOTES:
- FOR GENERAL NOTES, ABBREVIATIONS AND SYMBOLS, SEE DRAWING LA-S-001.
 - FOR CHANNEL, GIRT AND EAVE STRUT CONNECTION DETAILS, SEE DRAWING LA-S-005.



LIGO-D960941-01-0

NO.	DATE	BY	CHKD	ENGR	PROJ	REV OPNG HEAD DIM AT ELEV LN A	DESCRIPTION
1	2-28-97	RM	A.B	PH			

ISSUED FOR CONSTRUCTION	
DRAWN	PK 11-15-96
CHECKED	DDM 11-15-96
ENGINEER	BP 11-15-96
PROJ	TDM 11-15-96



PARSONS
 100 WEST WALNUT STREET
 PASADENA, CALIFORNIA

LIGO
 CALIFORNIA INSTITUTE OF TECHNOLOGY
 MASSACHUSETTS INSTITUTE OF TECHNOLOGY

LASER INTERFEROMETER
 GRAVITATIONAL-WAVE OBSERVATORY
 SITE NO. 2 - LIVINGSTON, LOUISIANA

STRUCTURAL
 MAINTENANCE BUILDING
 ROOF FRAMING PLAN &
 FRAMING ELEVATIONS

AS NOTED PPI 150969 8094
LA-S-125

not be reproduced, copied, loaned, exhibited, or used in any other way, except by written consent from PARSONS to the borrower.

This document and the design it covers are the property of PARSONS. They are loaned only with the borrower's expressed written agreement that they will

IUB FEB 25 12:30PM 1997 33 YARD - JSTV LUISIANA STATE BRG/SLC/CH/PH

IUB FEB 25 12:30PM 1997 33 YARD - JSTV LUISIANA STATE BRG/SLC/CH/PH