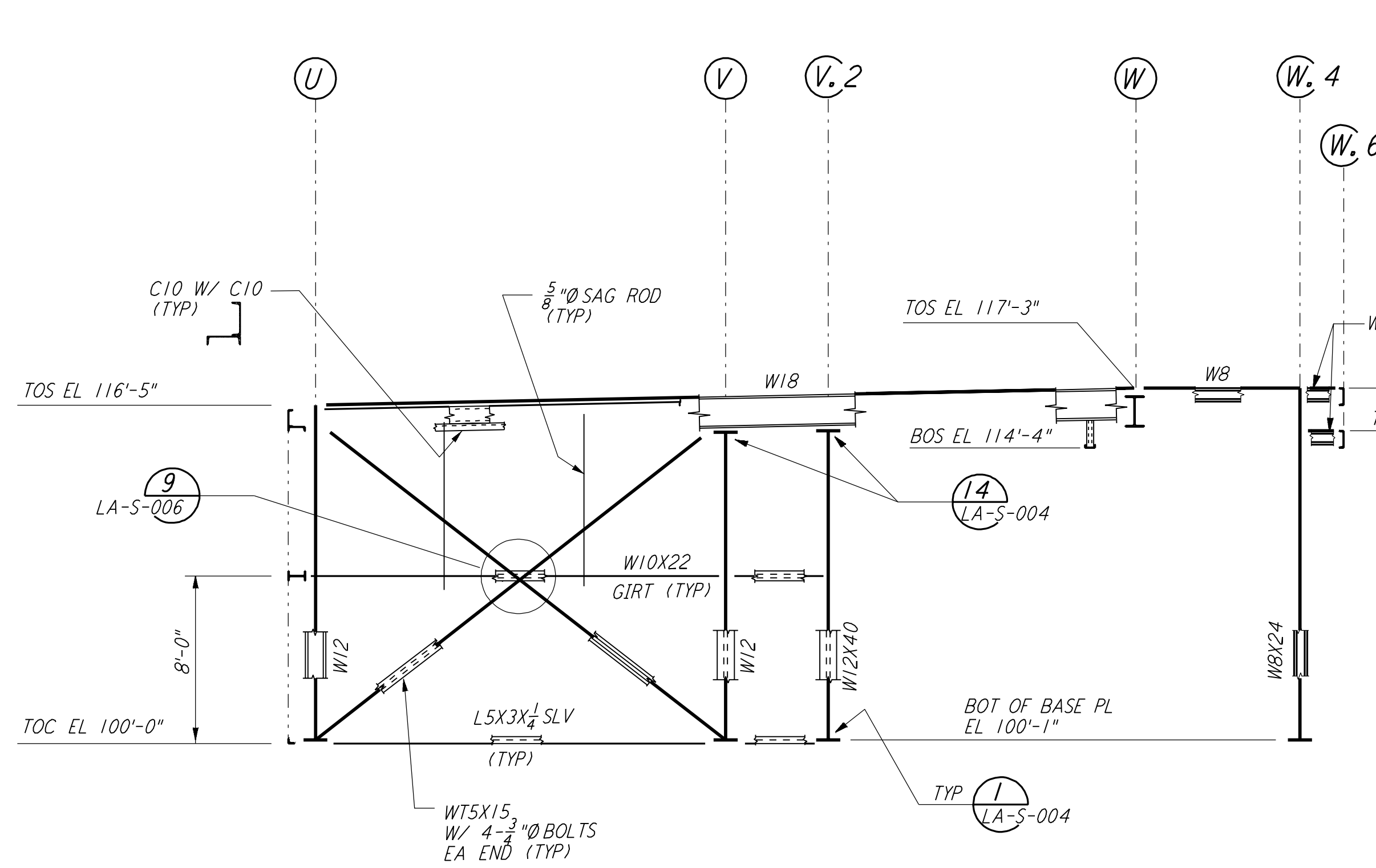
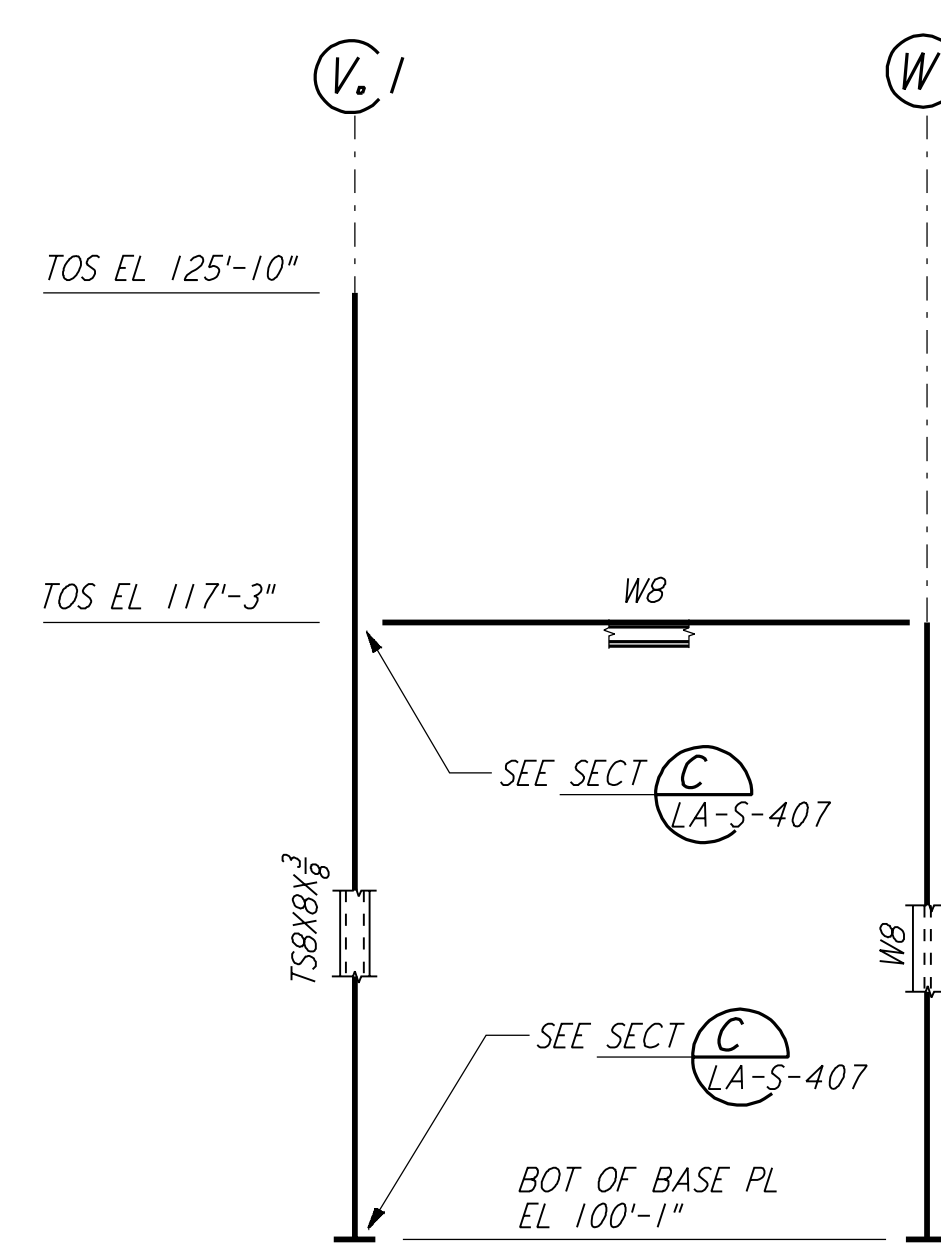


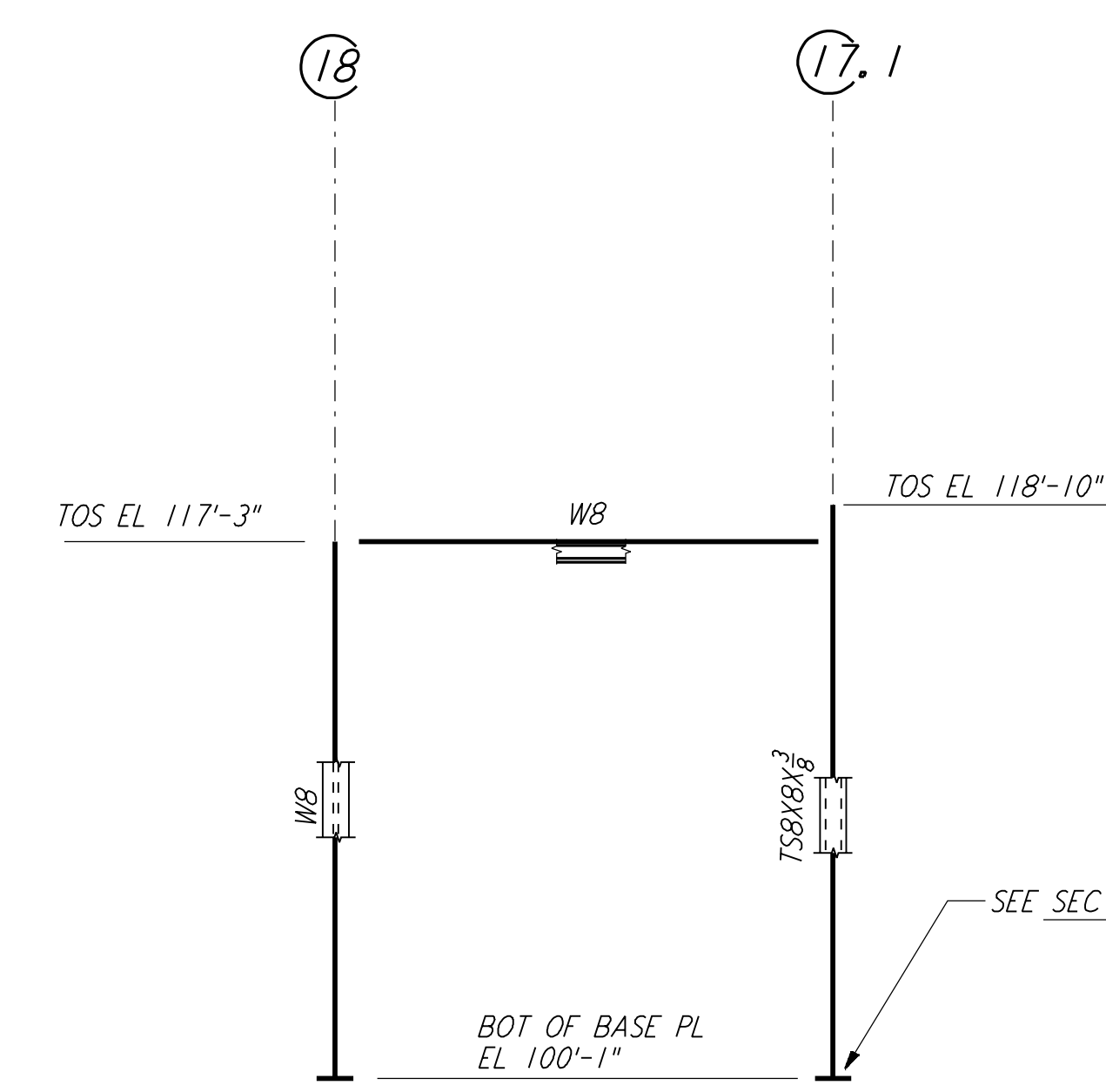
FRAMING ELEVATION AT COLUMN LINE 17
 3/8" = 1'-0"



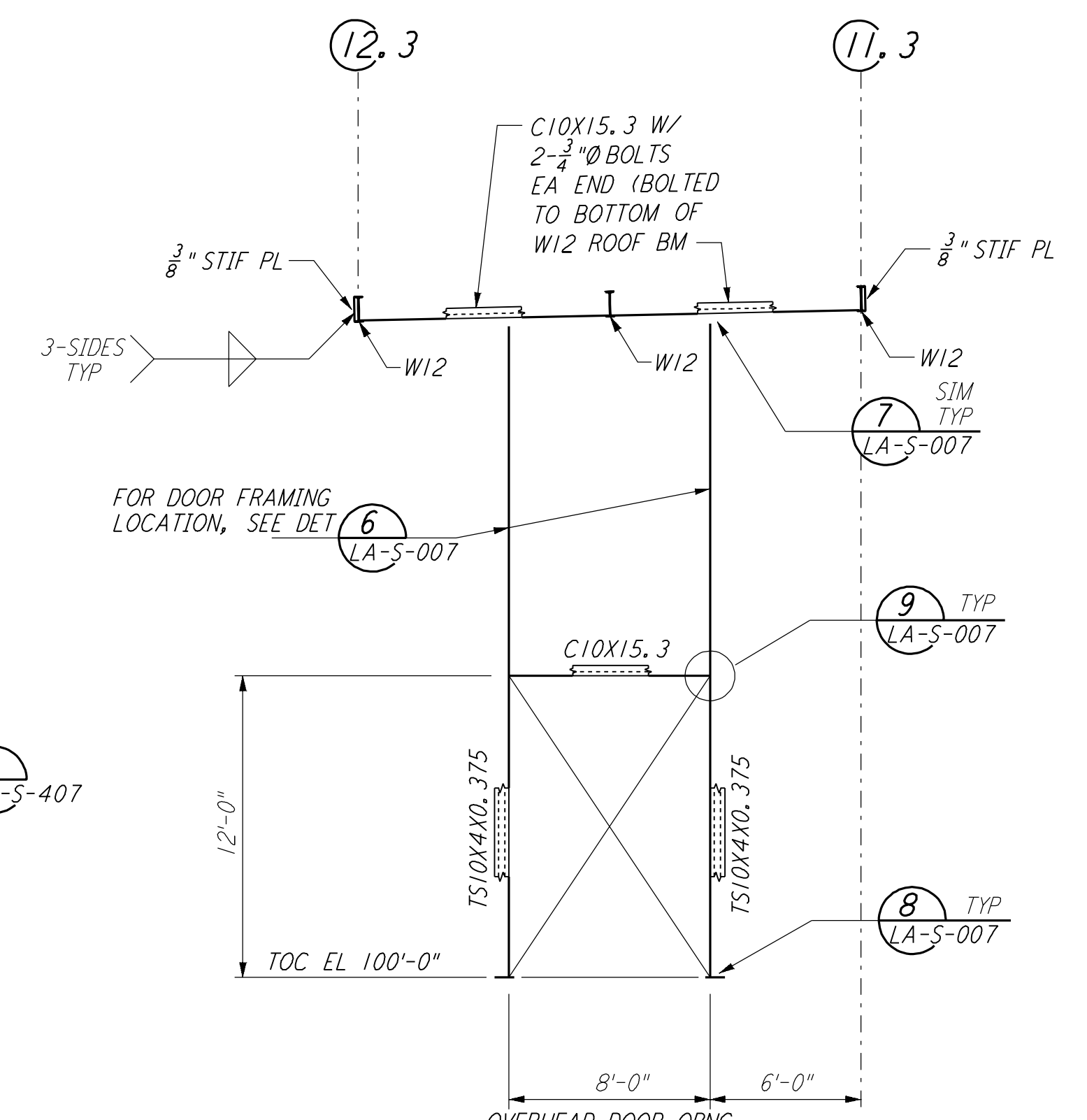
FRAMING ELEVATION AT COLUMN LINE 18
 3/8" = 1'-0"



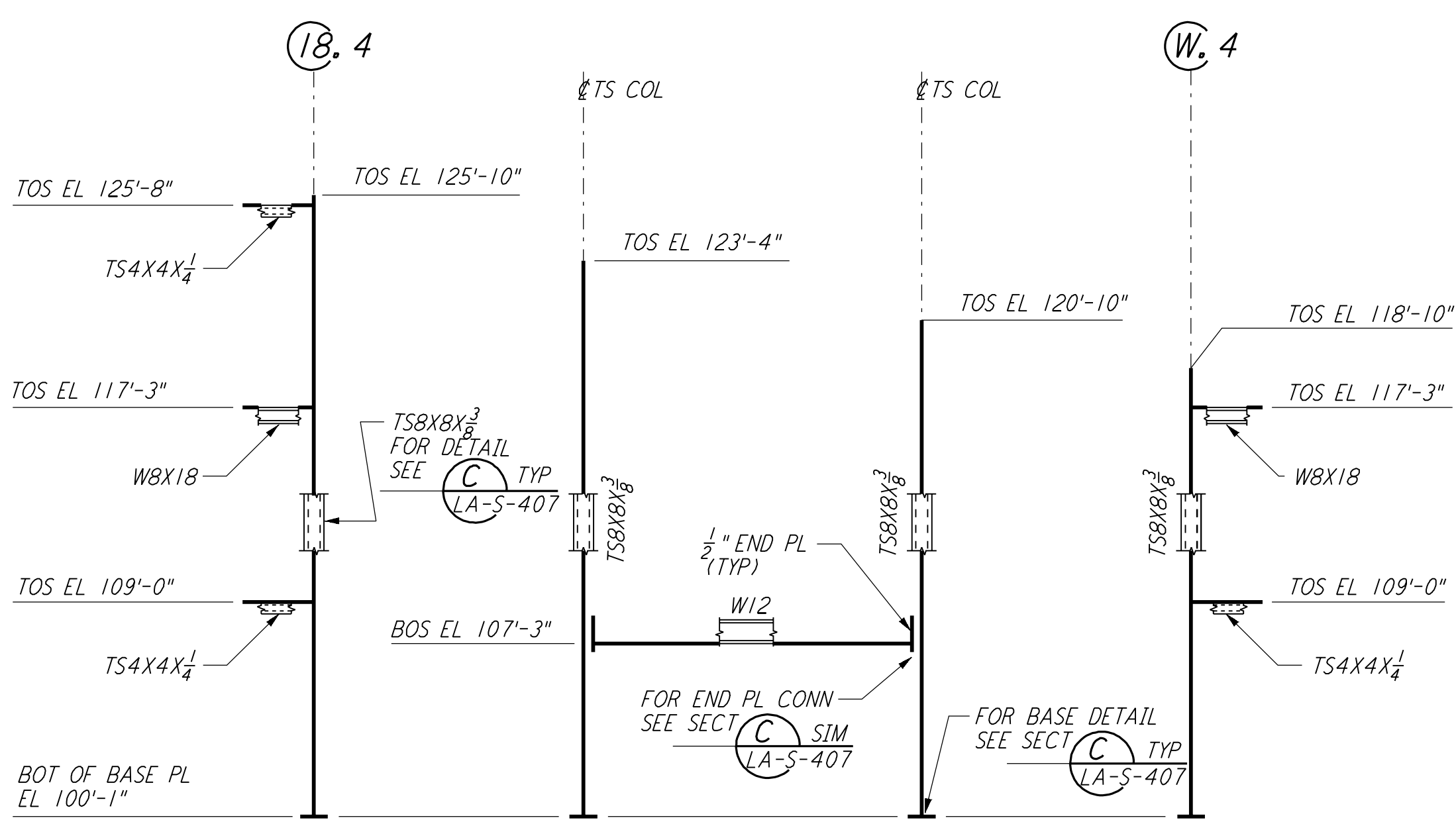
FRAMING ELEVATION AT COLUMN LINE 18.4
 3/8" = 1'-0"



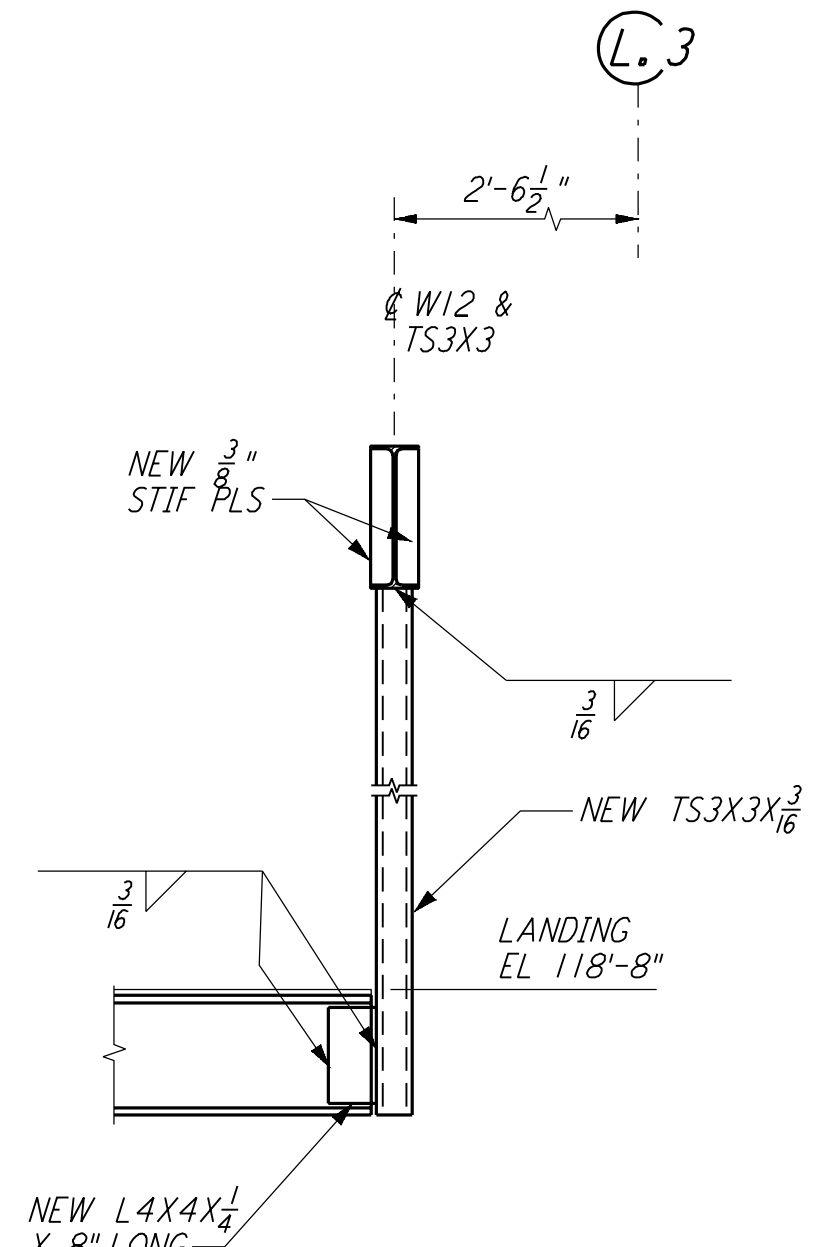
FRAMING ELEVATION AT COLUMN LINE W.4
 3/8" = 1'-0"



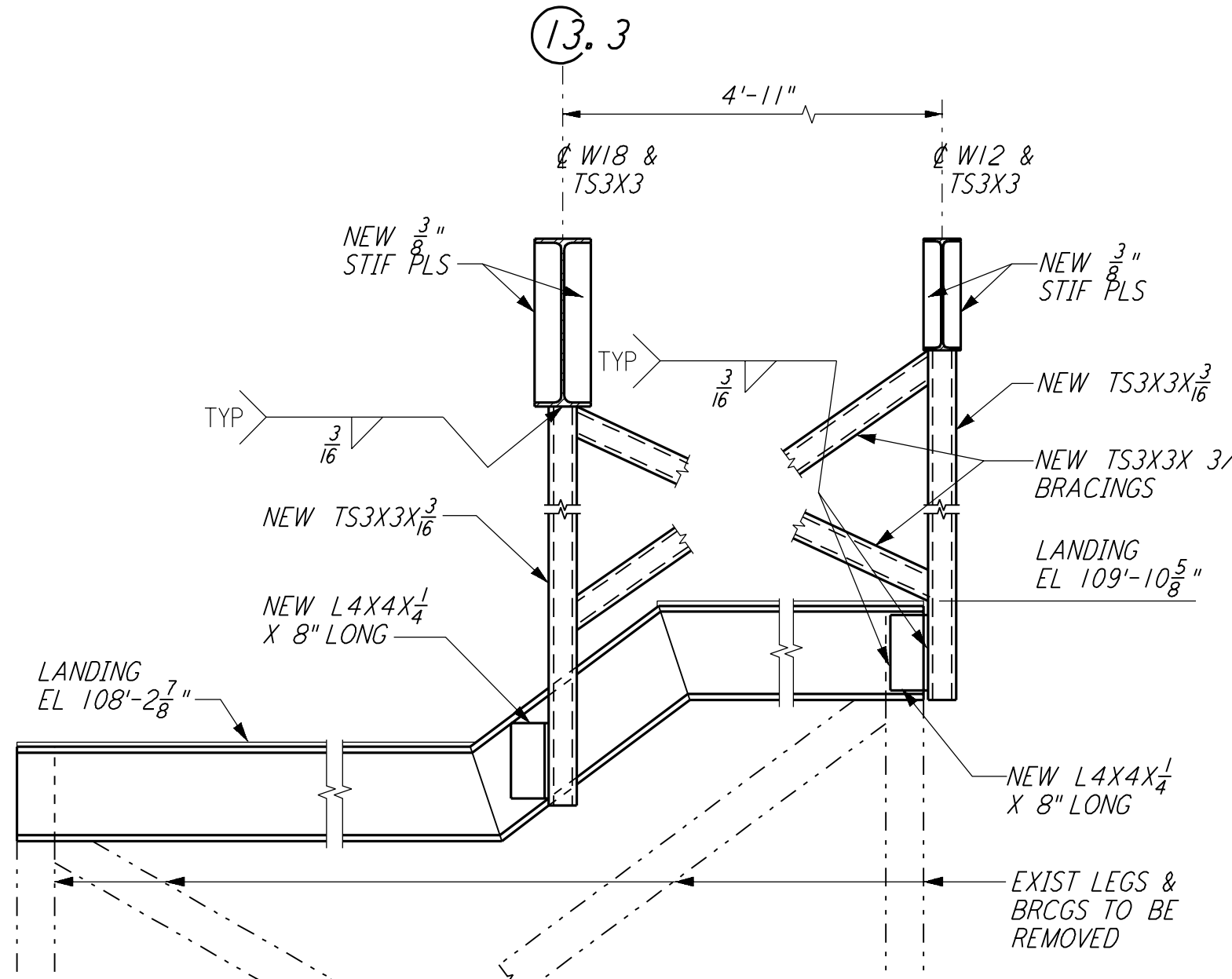
SECTION A REF
 3/8" = 1'-0" LA-S-123 LA-S-116



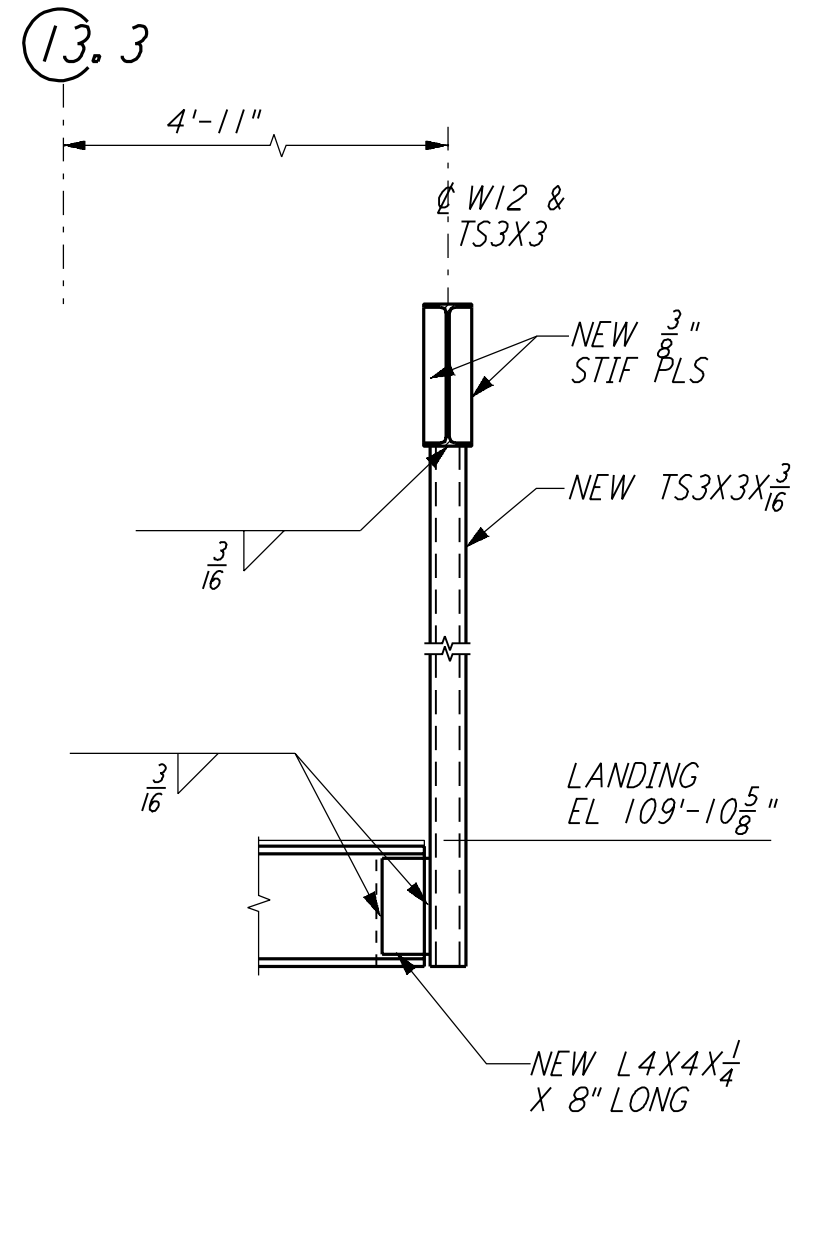
DEVELOPED FRAMING ELEVATION (B) REF
 3/8" = 1'-0" LA-S-123 LA-S-116



SECTION C REF
 3/4" = 1'-0" LA-S-123 LA-S-116

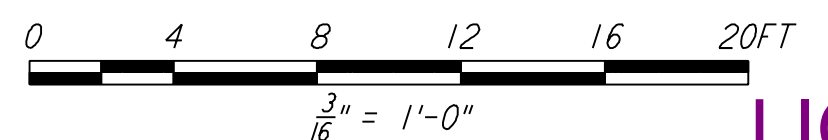


SECTION D REF
 3/4" = 1'-0" LA-S-123 LA-S-116



SECTION E REF
 3/4" = 1'-0" LA-S-123 LA-S-116

- NOTES:
- FOR GENERAL NOTES, ABBREVIATIONS AND SYMBOLS SEE DRAWING LA-S-001.
 - FOR CHANNEL, GIRT AND EAVE STRUT CONNECTION DETAILS SEE DRAWING LA-S-005.
 - FOR W BEAM TO COLUMN WEB/FLANGE CONNECTIONS, SEE DETAILS (6) LA-S-004 & (4) LA-S-007 TYP UNLESS OTHERWISE NOTED.
 - FOR BASE ANGLE (LSX3) CONNECTIONS, SEE SECTION (A) LA-S-003.
 - FOR VERT BRCG CONNECTIONS SEE (2) LA-S-006 (8) LA-S-006 (1) LA-S-007 (2) LA-S-007 TYP UNON.



LIGO-D960939-01-O

NO.	DATE	BY	CHKD	ENGR	PROJ	DESCRIPTION
1	08-07-98	WA				ISSUED FOR AS-BUILT

ISSUED FOR CONSTRUCTION			
DRAWN	MCS	11-15-96	
CHECKED	DDM	11-15-96	
ENGINEER	BP	11-15-96	
PROJ	TDM	11-15-96	

AS-BUILT DRAWINGS



LASER INTERFEROMETER GRAVITATIONAL-WAVE OBSERVATORY SITE NO. 2 - LIVINGSTON, LOUISIANA		
TITLE	AS NOTED	PROJECT NUMBER
STRUCTURAL CORNER STATION OSB FRAMING ELEVATIONS SHEET 7	PP150969	8094
SHEET NUMBER		REVISIONS
LA-S-123		(1)

This document and the design it covers are the property of PARSONS. They are loaned only with the borrower's expressed written agreement that they will not be reproduced, copied, loaned, exhibited, or used in any other way, except by written consent from PARSONS to the borrower.

Wed Oct 7 16:02:40 1998 c:\p1\st\l123.dwg N:\D01\EL\ES\2082\123.PDF