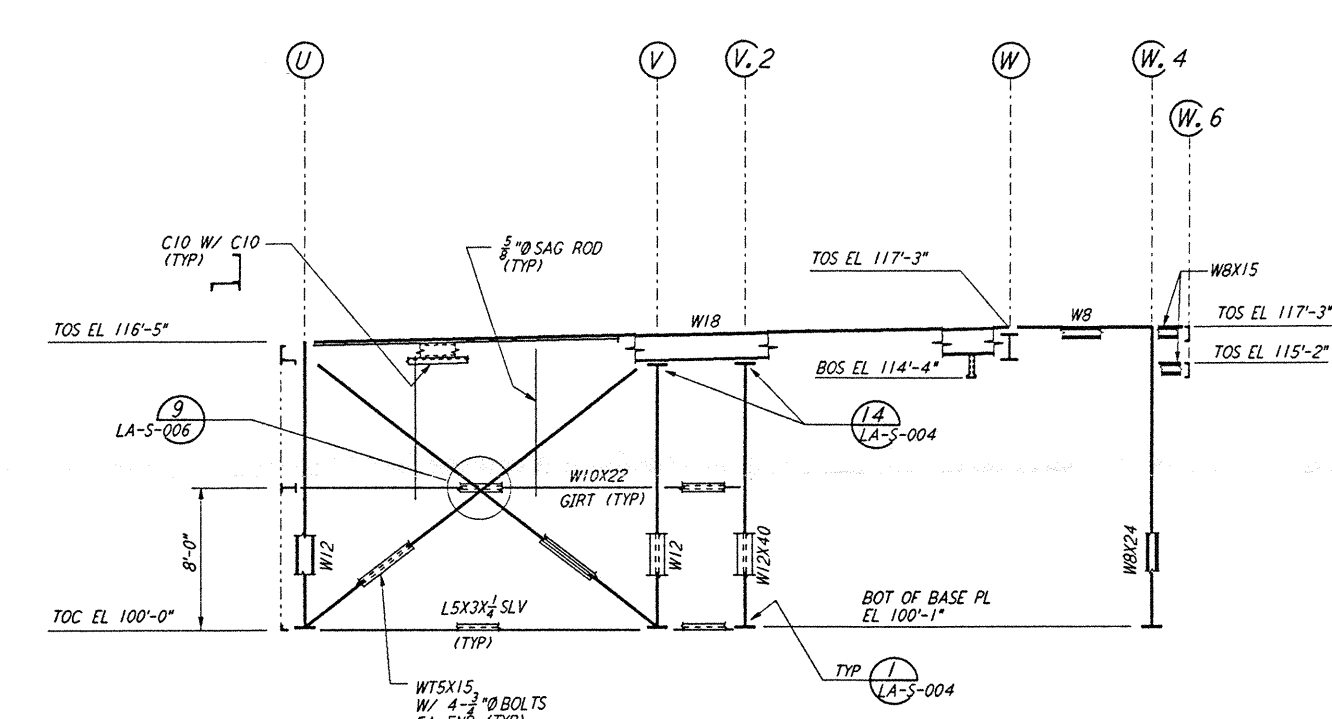
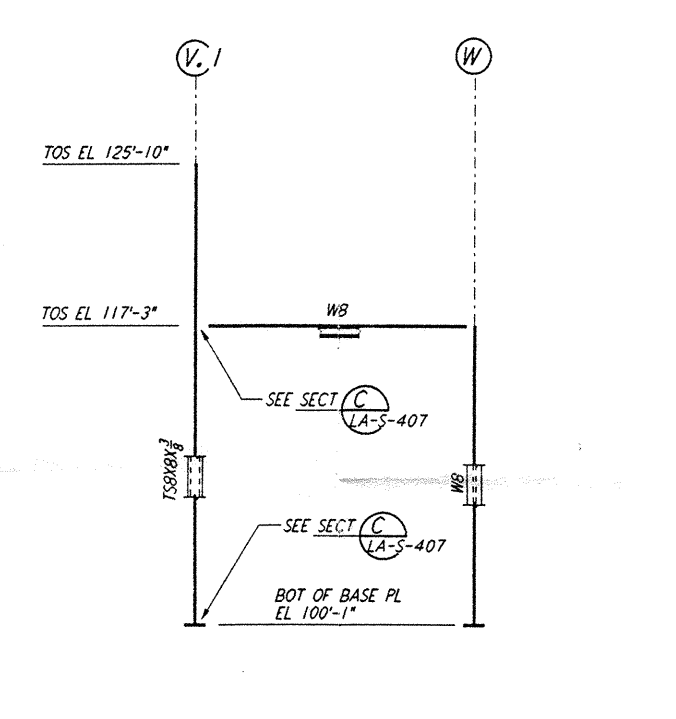


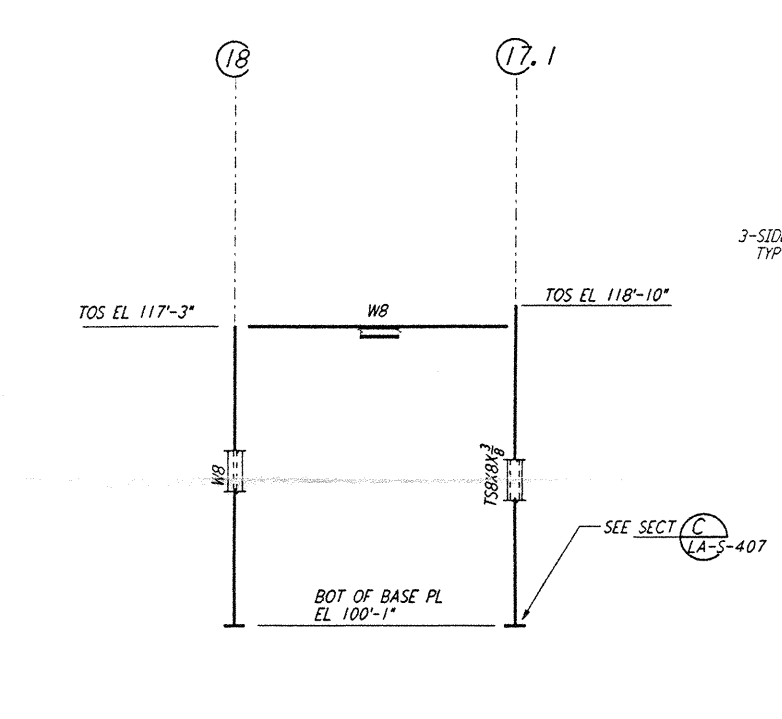
FRAMING ELEVATION AT COLUMN LINE 17
 $\frac{3}{8}'' = 1'-0''$



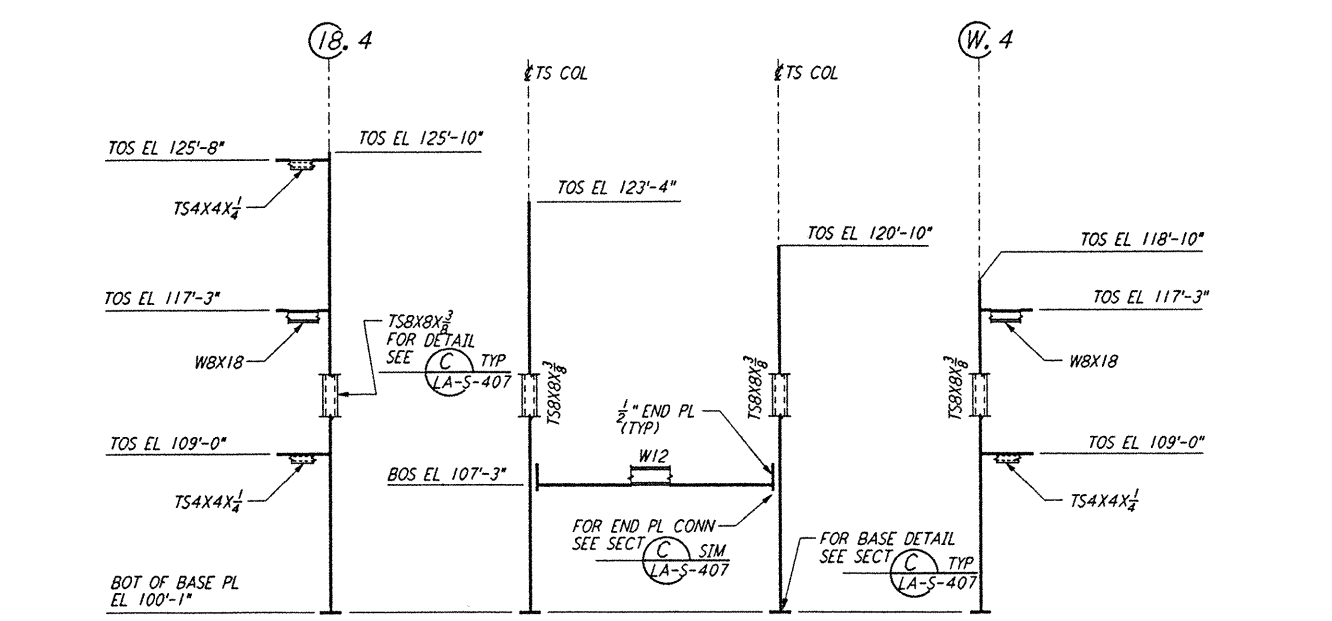
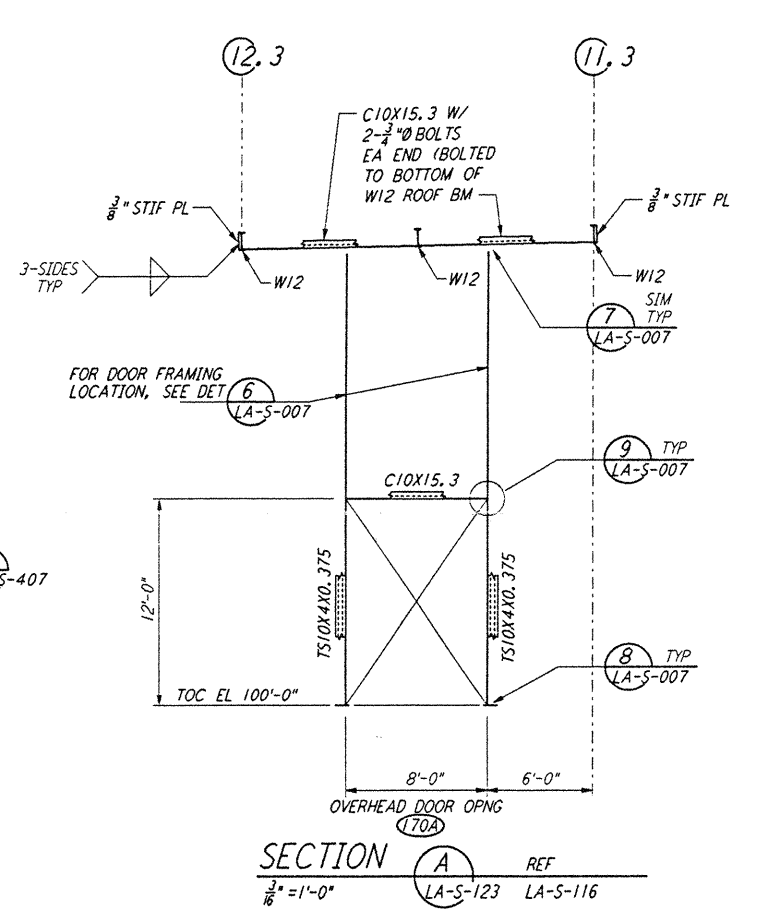
FRAMING ELEVATION AT COLUMN LINE 18
 $\frac{3}{8}'' = 1'-0''$



FRAMING ELEVATION AT COLUMN LINE 18.4
 $\frac{3}{8}'' = 1'-0''$

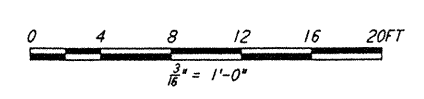


FRAMING ELEVATION AT COLUMN LINE W.4
 $\frac{3}{8}'' = 1'-0''$



DEVELOPED FRAMING ELEVATION
 $\frac{3}{8}'' = 1'-0''$

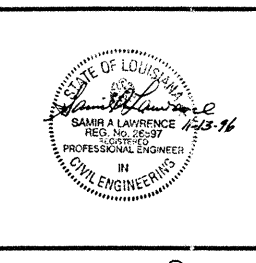
- NOTES:
1. FOR GENERAL NOTES, ABBREVIATIONS AND SYMBOLS SEE DRAWING LA-S-001.
 2. FOR CHANNEL, GIRTS AND EAVE STRUT CONNECTION DETAILS SEE DRAWING LA-S-005.
 3. FOR W BEAM TO COLUMN WEB/FLANGE CONNECTIONS, SEE DETAILS (6), (3) & (4) TYPICAL UNLESS OTHERWISE NOTED.
 4. FOR BASE ANGLE (LSX3) CONNECTIONS, SEE SECTION (A) LA-S-003.
 5. FOR VERT BRGC CONNECTIONS SEE (2) LA-S-006, (8) LA-S-006, (1) LA-S-007, (2) LA-S-007 TYP UNON.



This document and the design it covers are the property of PARSONS. They are loaned only with the borrower's expressed written agreement that they will not be reproduced, copied, loaned, exhibited, or used in any other way, except by written consent from PARSONS to the borrower.

NO.	DATE	BY	CHKD	ENGR	PROJ	DESCRIPTION

ISSUED FOR CONSTRUCTION	
DRAWN	MCS 11-15-96
CHECKED	8/21 11-15-96
ENGINEER	BT 11-15-96
PROJ	11/18/96



PARSONS
 100 WEST WALNUT STREET
 PASADENA, CALIFORNIA

LIGO
 CALIFORNIA INSTITUTE OF TECHNOLOGY
 MASSACHUSETTS INSTITUTE OF TECHNOLOGY

LASER INTERFEROMETER
 GRAVITATIONAL-WAVE OBSERVATORY
 SITE NO. 2 - LIVINGSTON, LOUISIANA

TITLE: STRUCTURAL CORNER STATION OSB FRAMING ELEVATIONS SHEET 7

SCALE: AS NOTED
 CONTRACT NUMBER: PP150969
 PROJECT NUMBER: 8094

SHEET NUMBER: LA-S-123

REVISIONS: (Symbol)