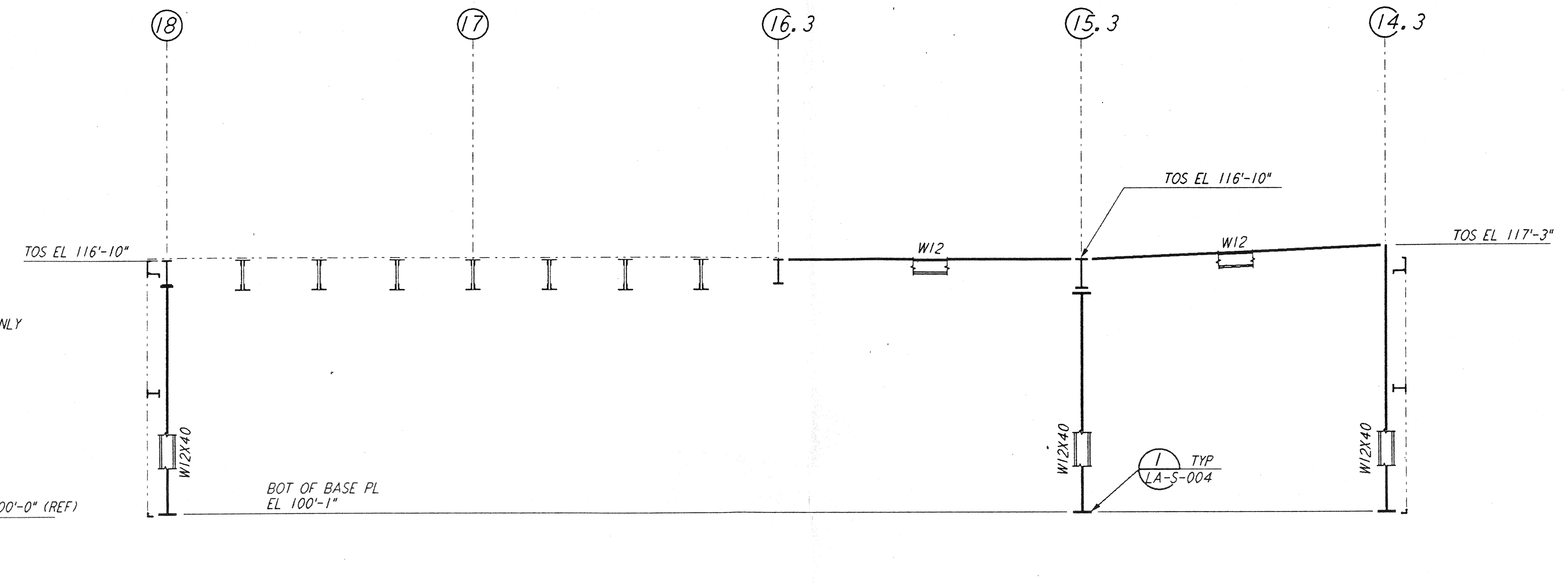
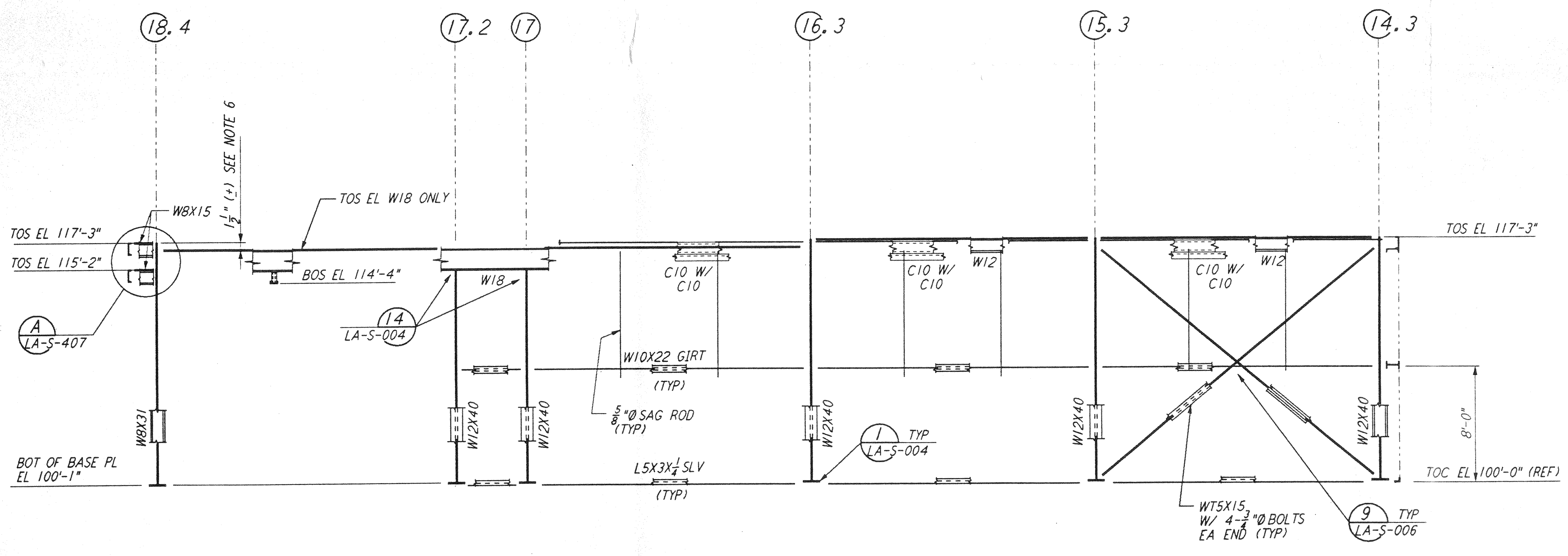


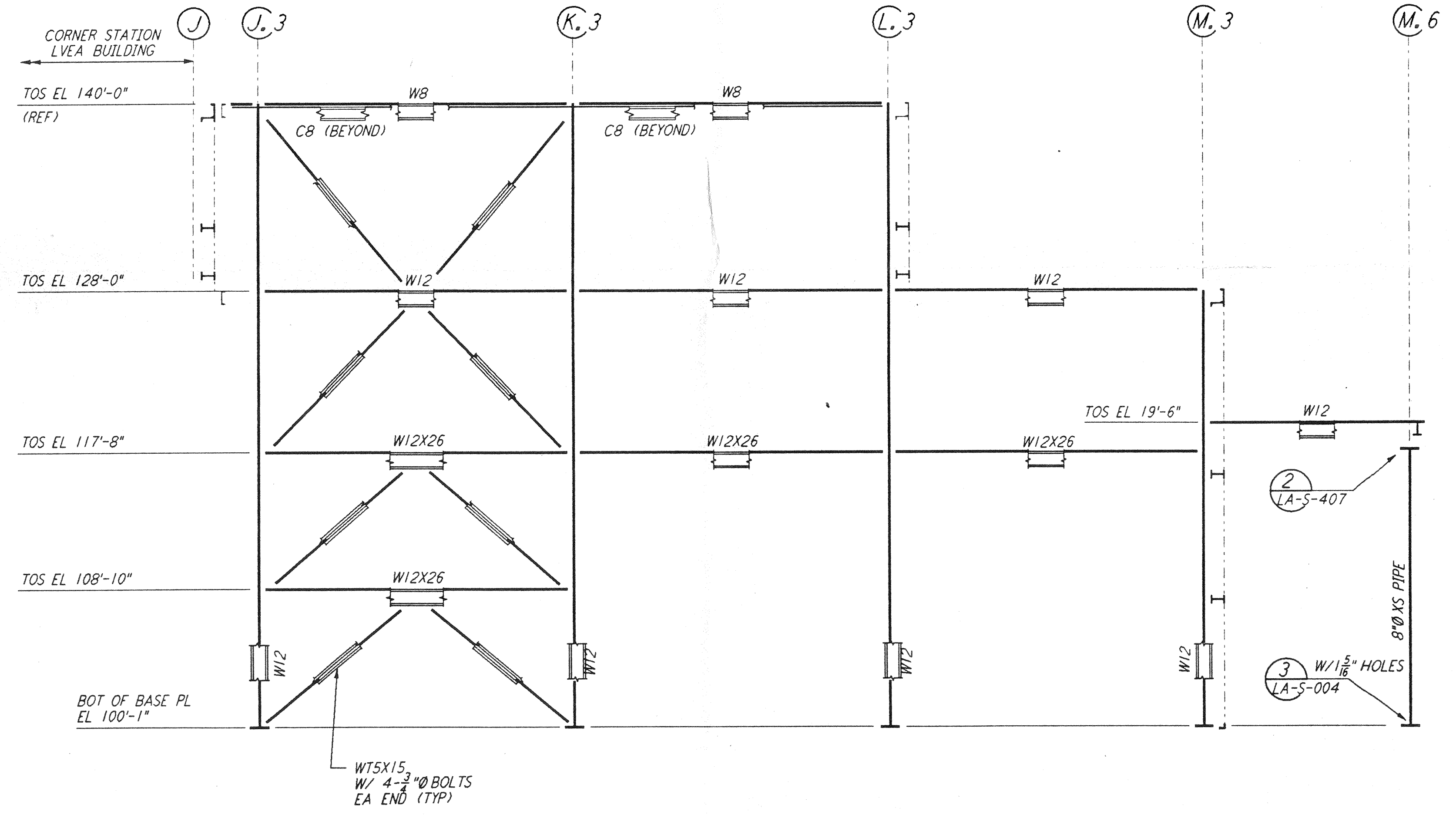
FRAMING ELEVATION AT COLUMN LINE U
 $\frac{3}{8}'' = 1'-0''$



FRAMING ELEVATION AT COLUMN LINE V
 $\frac{3}{8}'' = 1'-0''$

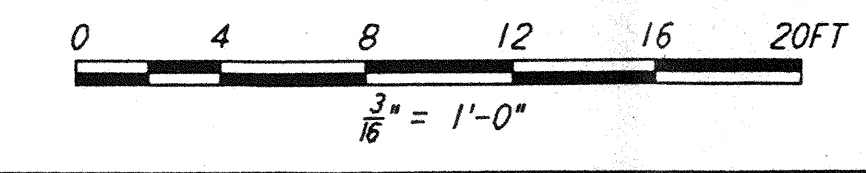


FRAMING ELEVATION AT COLUMN LINE W
 $\frac{3}{8}'' = 1'-0''$



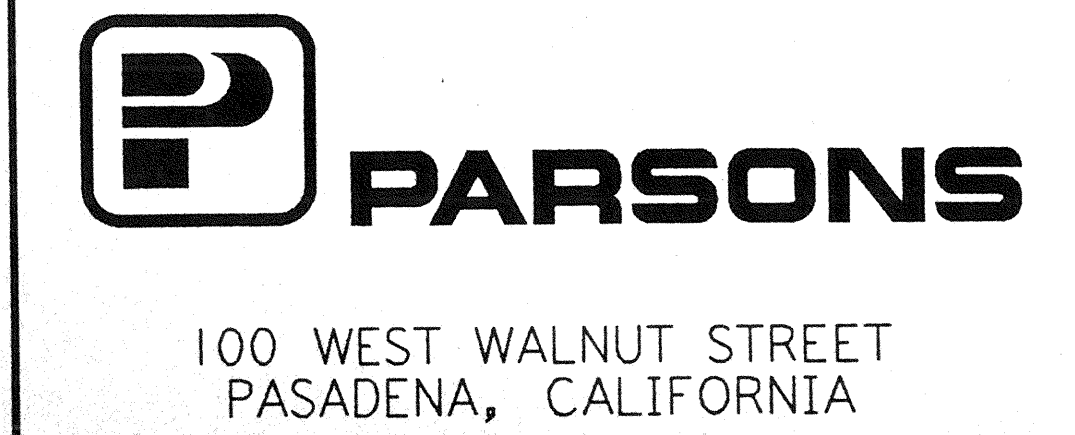
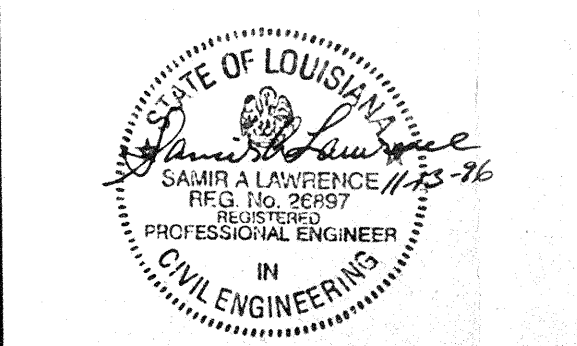
FRAMING ELEVATION AT COLUMN LINE 10.3
 $\frac{3}{8}'' = 1'-0''$

- NOTES:
- FOR GENERAL NOTES, ABBREVIATIONS AND SYMBOLS SEE DRAWING LA-5-001.
 - FOR CHANNEL, GIRT AND EAVE STRUT CONNECTION DETAILS SEE DRAWING LA-5-005.
 - FOR W BEAM TO COLUMN WEB/FLANGE CONNECTIONS, SEE DETAILS (6), (3) & (4) TYPICAL UNLESS OTHERWISE NOTED.
 - FOR BASE ANGLE (LSX3) CONNECTIONS, SEE SECTION (A).
 - FOR VERT BRGG CONNECTIONS SEE (2), (8), (1), (2) TYP UNO.
 - FABRICATOR TO ADJUST THIS DIMENSION BASED ON ACTUAL DEPTH OF THE TOP CHORD OF OPEN WEB JOISTS.



| NO. | DATE | BY | CHKD | ENGR | PROJ | DESCRIPTION |
|-----|------|----|------|------|------|-------------|
| | | | | | | |
| | | | | | | |
| | | | | | | |
| | | | | | | |

| | |
|-------------------------|--------------|
| ISSUED FOR CONSTRUCTION | |
| DRAWN | MCS 11-15-96 |
| CHECKED | BBW 11-15-96 |
| ENGINEER | BBW 11-15-96 |
| PROJ | EDB 11/15/96 |



LASER INTERFEROMETER
 GRAVITATIONAL-WAVE OBSERVATORY
 SITE NO. 2 - LIVINGSTON, LOUISIANA

TITLE: STRUCTURAL CORNER STATION OSB FRAMING ELEVATIONS SHEET 3

SCALE: AS NOTED

CONTRACT NUMBER: PP150969

PROJECT NUMBER: 8094

SHEET NUMBER: LA-S-119

REVISIONS: (triangle symbol)

This document and the design it covers are the property of PARSONS. They are loaned only with the borrower's expressed written agreement that they will not be reproduced, copied, loaned, exhibited, or used in any other way, except by written consent from PARSONS to the borrower.

This document and the design it covers are the property of PARSONS. They are loaned only with the borrower's expressed written agreement that they will not be reproduced, copied, loaned, exhibited, or used in any other way, except by written consent from PARSONS to the borrower.