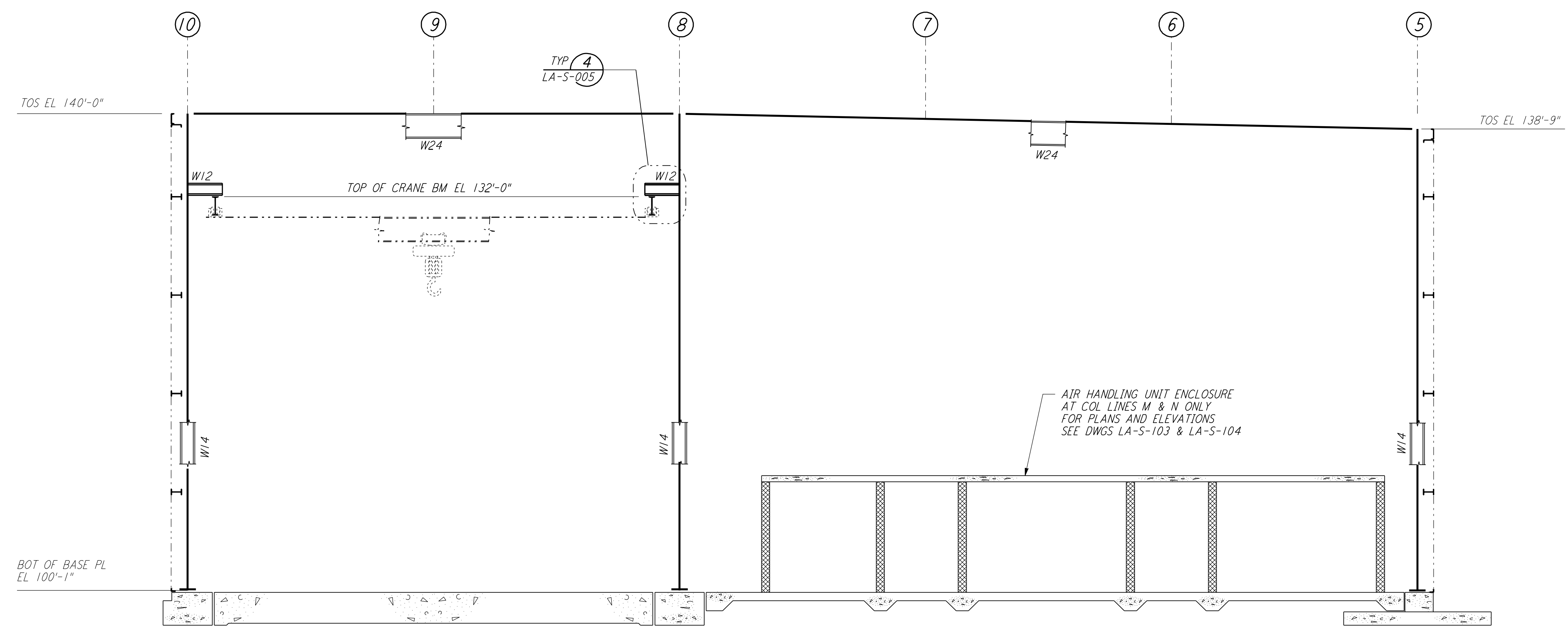


ELEVATION AT COLUMN LINE K

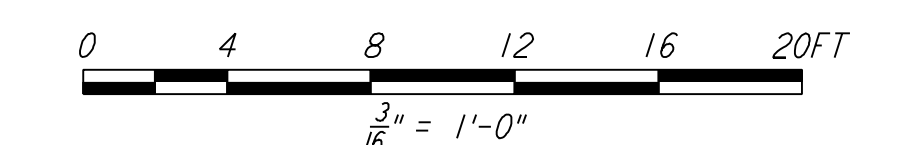
3/16" = 1'-0"



ELEVATION AT COLUMN LINES L, M & N

3/16" = 1'-0"

NOTE:  
 1. FOR NOTES SEE DRAWING LA-S-107.



LIGO-D960930-01-0

| NO. | DATE     | BY | CHKD | ENGR | PROJ | DESCRIPTION         |
|-----|----------|----|------|------|------|---------------------|
| 1   | 08-07-98 | WA |      |      |      | ISSUED FOR AS-BUILT |

| ISSUED FOR CONSTRUCTION |     |          |
|-------------------------|-----|----------|
| DRAWN                   | MCS | 11-15-96 |
| CHECKED                 | DDM | 11-15-96 |
| ENGINEER                | BP  | 11-15-96 |
| PROJ                    | TDM | 11-15-96 |

**AS-BUILT DRAWINGS**

**PARSONS**  
 100 WEST WALNUT STREET  
 PASADENA, CALIFORNIA

**LIGO**  
 CALIFORNIA INSTITUTE OF TECHNOLOGY  
 MASSACHUSETTS INSTITUTE OF TECHNOLOGY

LASER INTERFEROMETER  
 GRAVITATIONAL-WAVE OBSERVATORY  
 SITE NO. 2 - LIVINGSTON, LOUISIANA

|   |          |                 |                |
|---|----------|-----------------|----------------|
| TITLE   | SCALE    | CONTRACT NUMBER | PROJECT NUMBER |
| STRUCTURAL CORNER STATION LVEA FRAMING ELEVATIONS SHEET 8 | AS NOTED | PP150969        | 8094           |
| SHEET NUMBER  |          | REVISIONS       |                |
| LA-S-114  |          | 1               |                |

This document and the design it covers are the property of PARSONS. They are loaned only with the borrower's expressed written agreement that they will not be reproduced, copied, loaned, exhibited, or used in any other way, except by written consent from PARSONS to the borrower.

This document and the design it covers are the property of PARSONS. They are loaned only with the borrower's expressed written agreement that they will not be reproduced, copied, loaned, exhibited, or used in any other way, except by written consent from PARSONS to the borrower.

Wed Oct 7 15:49:36 1998 c:\p1\stf\loc114.dwg I:\ligo\site2\stf\los114.dwg L100LAF.BDR