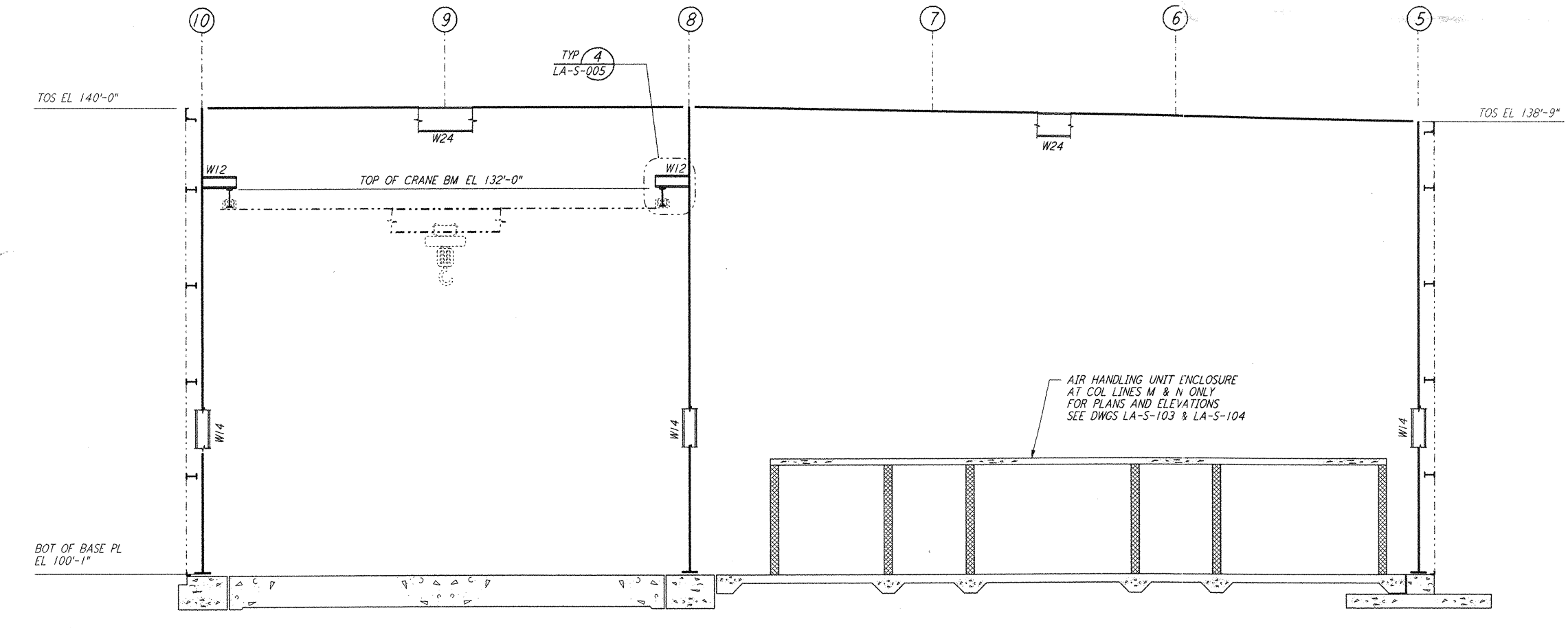
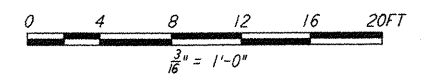


ELEVATION AT COLUMN LINE K  
 $\frac{3}{8}'' = 1'-0''$



ELEVATION AT COLUMN LINES L, M & N  
 $\frac{3}{8}'' = 1'-0''$

NOTE:  
 1. FOR NOTES SEE DRAWING LA-S-107.



LIGO-D960930-01-O

NO.	DATE	BY	CHKD	ENGR	PROJ	DESCRIPTION
1	08-07-98	WA	DDM	BP	WLU	ISSUED FOR AS-BUILT

ISSUED FOR CONSTRUCTION	
DRAWN	MCS 11-15-96
CHECKED	DDM 11-15-96
ENGINEER	BP 11-15-96
PROJ	TDM 11-15-96
<b>AS-BUILT DRAWINGS</b>	

**PARSONS**  
 100 WEST WALNUT STREET  
 PASADENA, CALIFORNIA

**LIGO**  
 CALIFORNIA INSTITUTE OF TECHNOLOGY  
 MASSACHUSETTS INSTITUTE OF TECHNOLOGY

LASER INTERFEROMETER  
 GRAVITATIONAL-WAVE OBSERVATORY  
 SITE NO. 2 - LIVINGSTON, LOUISIANA

TITLE	AS NOTED	CONTRACT NUMBER	PROJECT NUMBER
STRUCTURAL CORNER STATION LVEA FRAMING ELEVATIONS SHEET 8	PP150969	8094	
SHEET NUMBER		REVISONS	
LA-S-114			

This document and the design it covers are the property of PARSONS. They are loaned only with the borrower's expressed written agreement that they will not be reproduced, copied, loaned, exhibited, or used in any other way, except by written consent from PARSONS to the borrower.

This document and the design it covers are the property of PARSONS. They are loaned only with the borrower's expressed written agreement that they will not be reproduced, copied, loaned, exhibited, or used in any other way, except by written consent from PARSONS to the borrower.

The Aug 13 15:01:57 1998 C:\PLOT\QUE\53\13682.DWG 52085 KAV3682A\114.dwg LIGOLAF.BDR