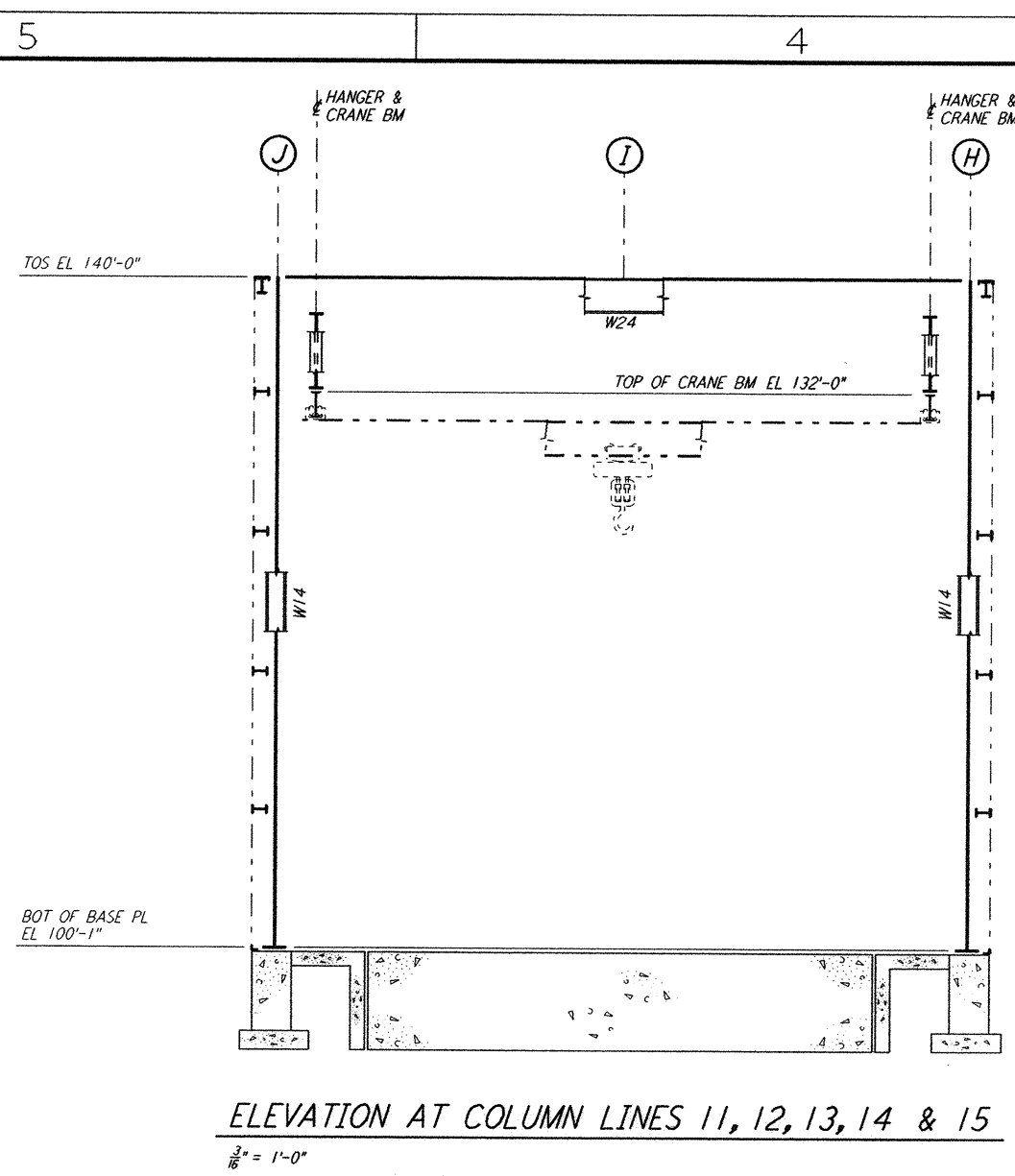
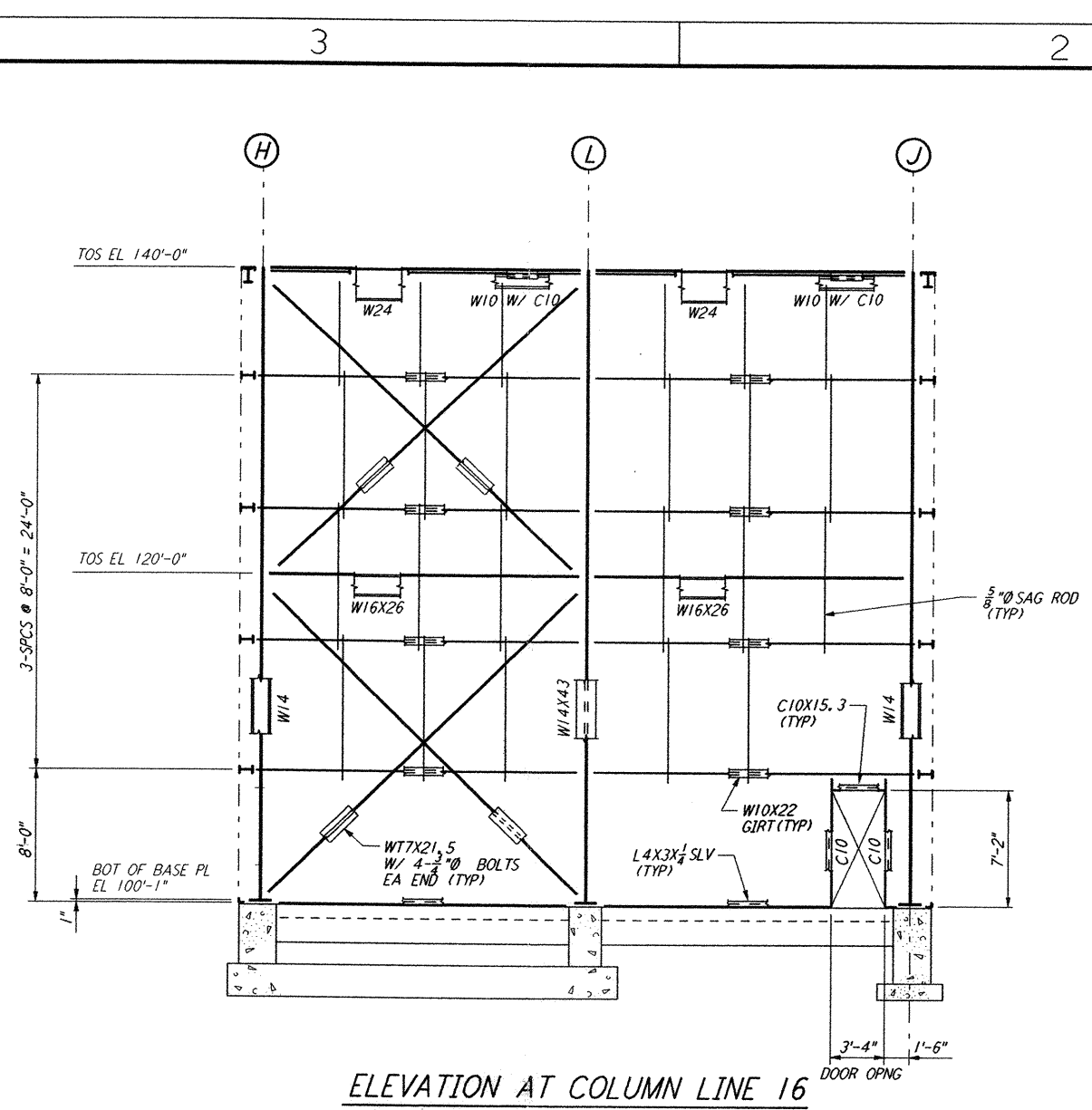


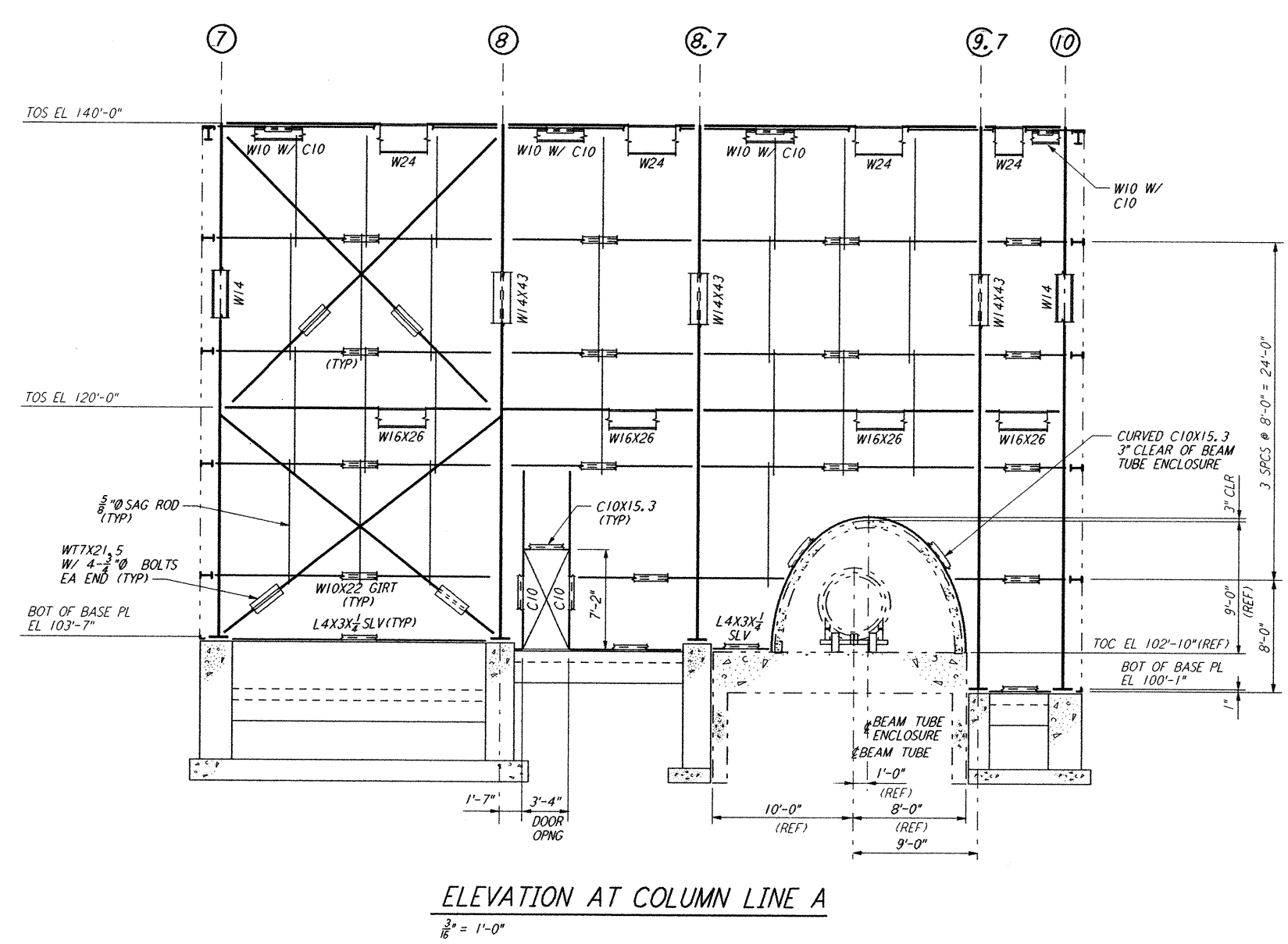
This document and the design it covers are the property of PARSONS. They are loaned only with the borrower's expressed written agreement that they will not be reproduced, copied, loaned, exhibited, or used in any other way, except by written consent from PARSONS.



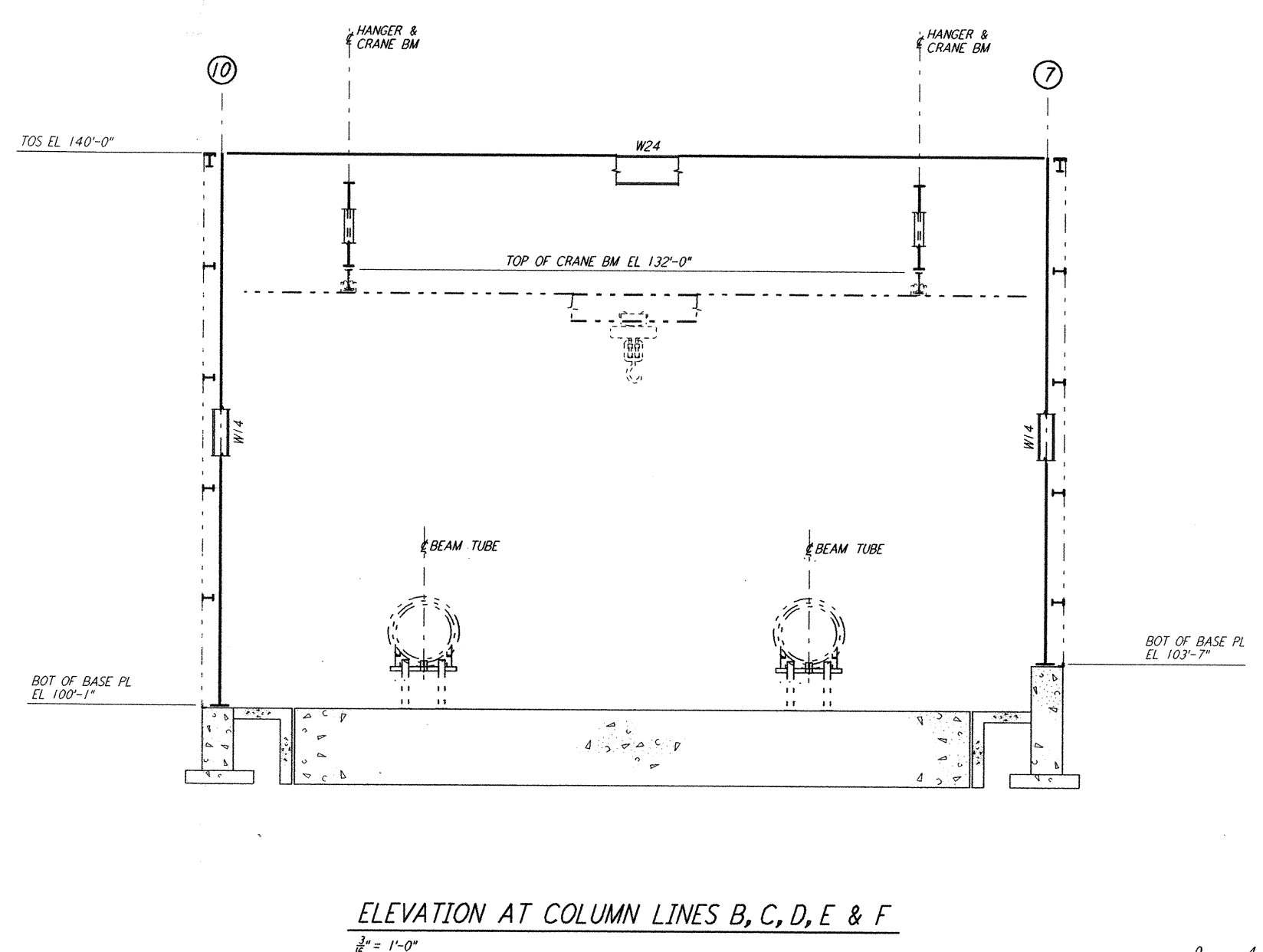
ELEVATION AT COLUMN LINES 11, 12, 13, 14 & 15
 $\frac{1}{8}'' = 1'-0''$



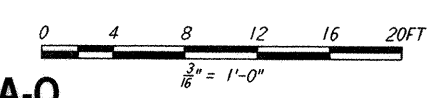
ELEVATION AT COLUMN LINE 16
 $\frac{1}{8}'' = 1'-0''$



ELEVATION AT COLUMN LINE A
 $\frac{1}{8}'' = 1'-0''$



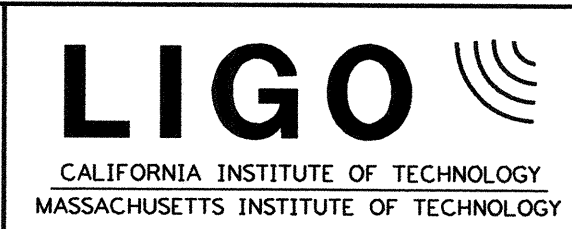
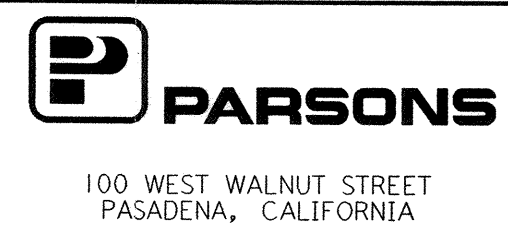
ELEVATION AT COLUMN LINES B, C, D, E & F
 $\frac{1}{8}'' = 1'-0''$



LIGO-D960928-A-0

9				J				DATE	10-31-95
8				H				DRAWN	MCS
7				G				CHECKED	
6				F				ENGINEER	
5				E				PROJ MGR	
4				D					
3				C					
2				B					
1				A					
NO.	DATE	APRD BY	DESCRIPTION OF REVISION	NO.	DATE	APRD BY	ISSUED FOR		
				A	10-31-95	TDM	PRELIMINARY DESIGN REVIEW		

DATE	10-31-95
DRAWN	MCS
CHECKED	
ENGINEER	
PROJ MGR	



LASER INTERFEROMETER
 GRAVITATIONAL-WAVE OBSERVATORY
 SITE NO. 2 - LIVINGSTON, LOUISIANA

CORNER STATION (LVEA)
 FRAMING ELEVATIONS
 SHEET 5

SCALE: AS NOTED
 CONTRACT NUMBER: PPI50969
 PROJECT NUMBER: 8094

LA-S-112