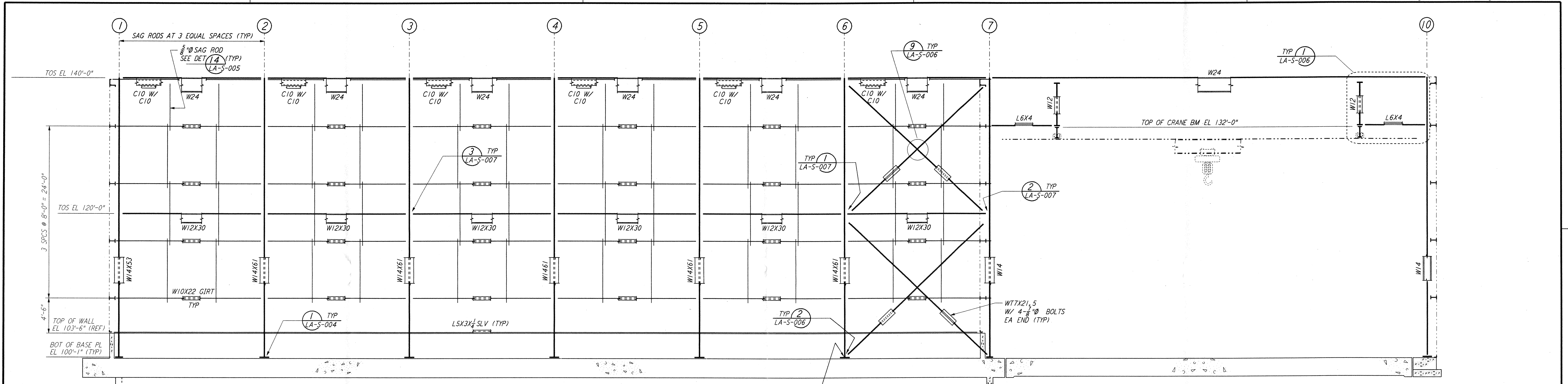
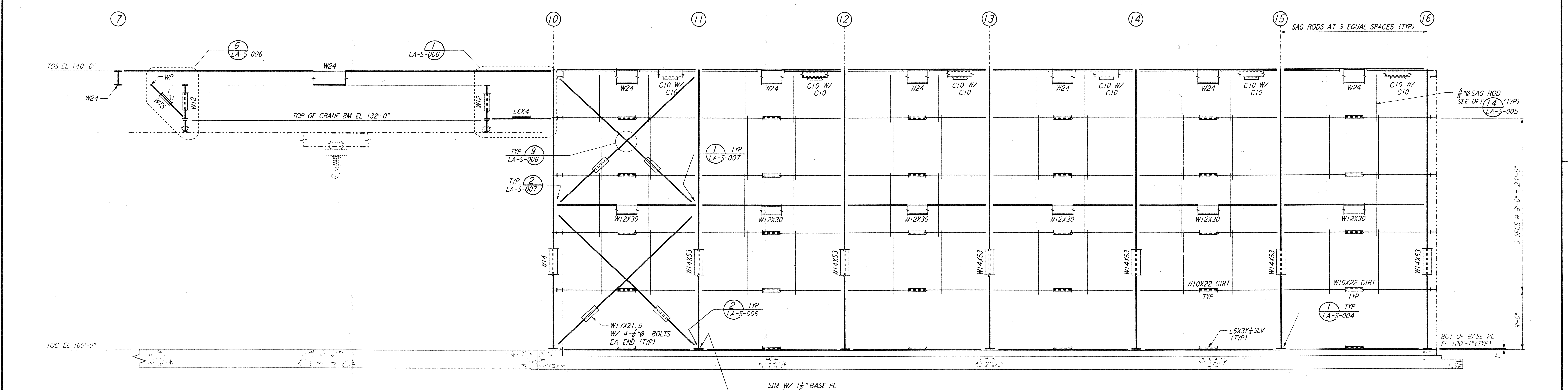


This document and the design it covers are the property of PARSONS. They are loaned only with the borrower's expressed written agreement that they will not be reproduced, copied, loaned, exhibited, or used in any other way, except by written consent from PARSONS to the borrower.

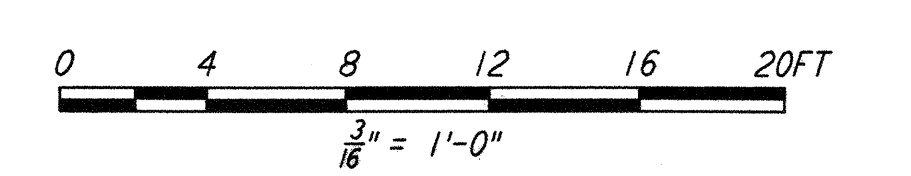


SIM W/ 1/2" BASE PL & 1/8" HOLES (TYP AT BRACED COLUMNS)
PARTIAL ELEVATION AT COLUMN LINE G
 3/16" = 1'-0"



SIM W/ 1/2" BASE PL & 1/8" HOLES (TYP AT BRACED COLUMNS)
PARTIAL ELEVATION AT COLUMN LINE H
 3/16" = 1'-0"

NOTE:
 1. FOR NOTES SEE DRAWING LA-S-107.



NO.	DATE	BY	CHKD	ENGR	PROJ	DESCRIPTION
1	08-07-98	WA	MM	MM	MM	ISSUED FOR AS-BUILT

ISSUED FOR CONSTRUCTION
 DRAWN MCS 11-15-96
 CHECKED DDM 11-15-96
 ENGINEER BP 11-15-96
 PROJ TDM 11-15-96
AS-BUILT DRAWINGS

PARSONS
 100 WEST WALNUT STREET
 PASADENA, CALIFORNIA

LIGO
 CALIFORNIA INSTITUTE OF TECHNOLOGY
 MASSACHUSETTS INSTITUTE OF TECHNOLOGY

LIGO-D960928-01-0
 LASER INTERFEROMETER
 GRAVITATIONAL-WAVE OBSERVATORY
 SITE NO. 2 - LIVINGSTON, LOUISIANA
STRUCTURAL CORNER STATION LVEA FRAMING ELEVATIONS SHEET 6
 SCALE: AS NOTED
 CONTRACT NUMBER: PPI50969
 PROJECT NUMBER: 8094
LA-S-112