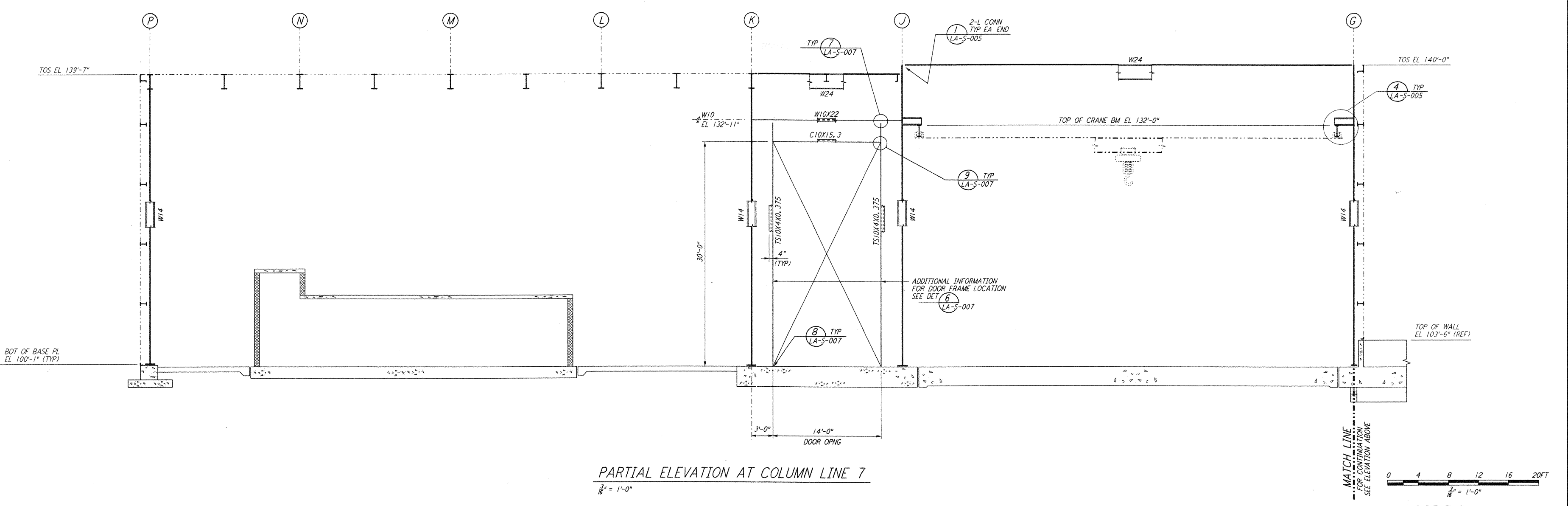


PARTIAL ELEVATION AT COLUMN LINE 7
 $\frac{3}{8}'' = 1'-0''$

NOTE:
 1. FOR NOTES SEE DRAWING LA-5-107.



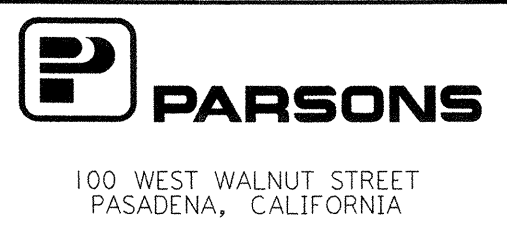
PARTIAL ELEVATION AT COLUMN LINE 7
 $\frac{3}{8}'' = 1'-0''$

not be reproduced, copied, loaned, exhibited, or used in any other way, except by written consent from PARSONS to the borrower.

This document and the design it covers are the property of PARSONS. They are loaned only with the borrower's expressed written agreement that they will

NO.	DATE	BY	CHKD	ENGR	PRJ	ISSUED FOR AS-BUILT	DESCRIPTION
1	08-07-98	WA	BP	TDM	WJ	ISSUED FOR AS-BUILT	

ISSUED FOR CONSTRUCTION	
DRAWN	MCS 11-15-96
CHECKED	DDM 11-15-96
ENGINEER	BP 11-15-96
PROJ	TDM 11-15-96
AS-BUILT DRAWINGS	



LIGO-D960925-01-0

LASER INTERFEROMETER
 GRAVITATIONAL-WAVE OBSERVATORY
 SITE NO. 2 - LIVINGSTON, LOUISIANA

TITLE	SCALE	CONTRACT NUMBER	PROJECT NUMBER
STRUCTURAL CORNER STATION LVEA FRAMING ELEVATIONS SHEET 3	AS NOTED	PP150969	8094
SHEET NUMBER		REVISIONS	
LA-S-109			