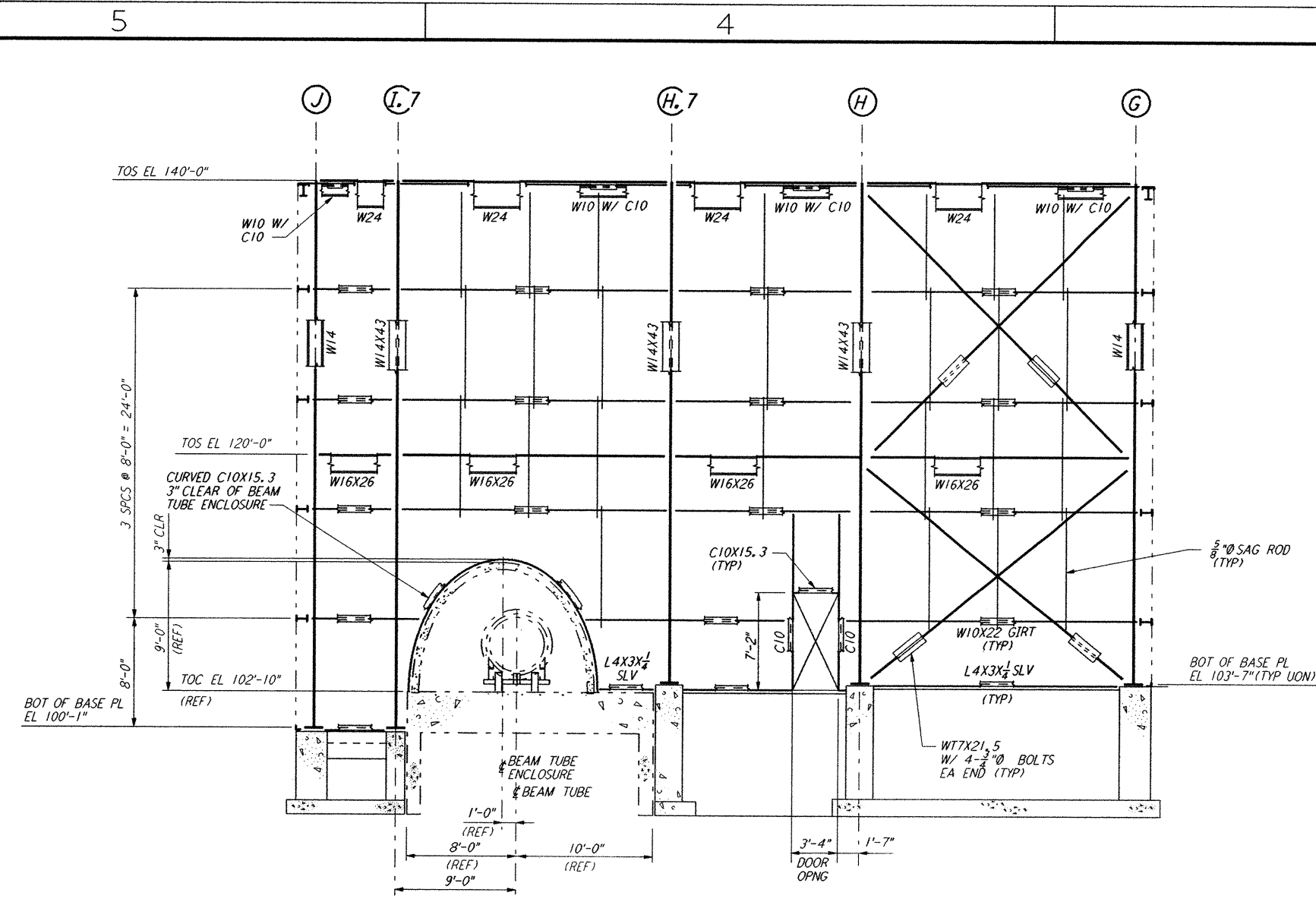
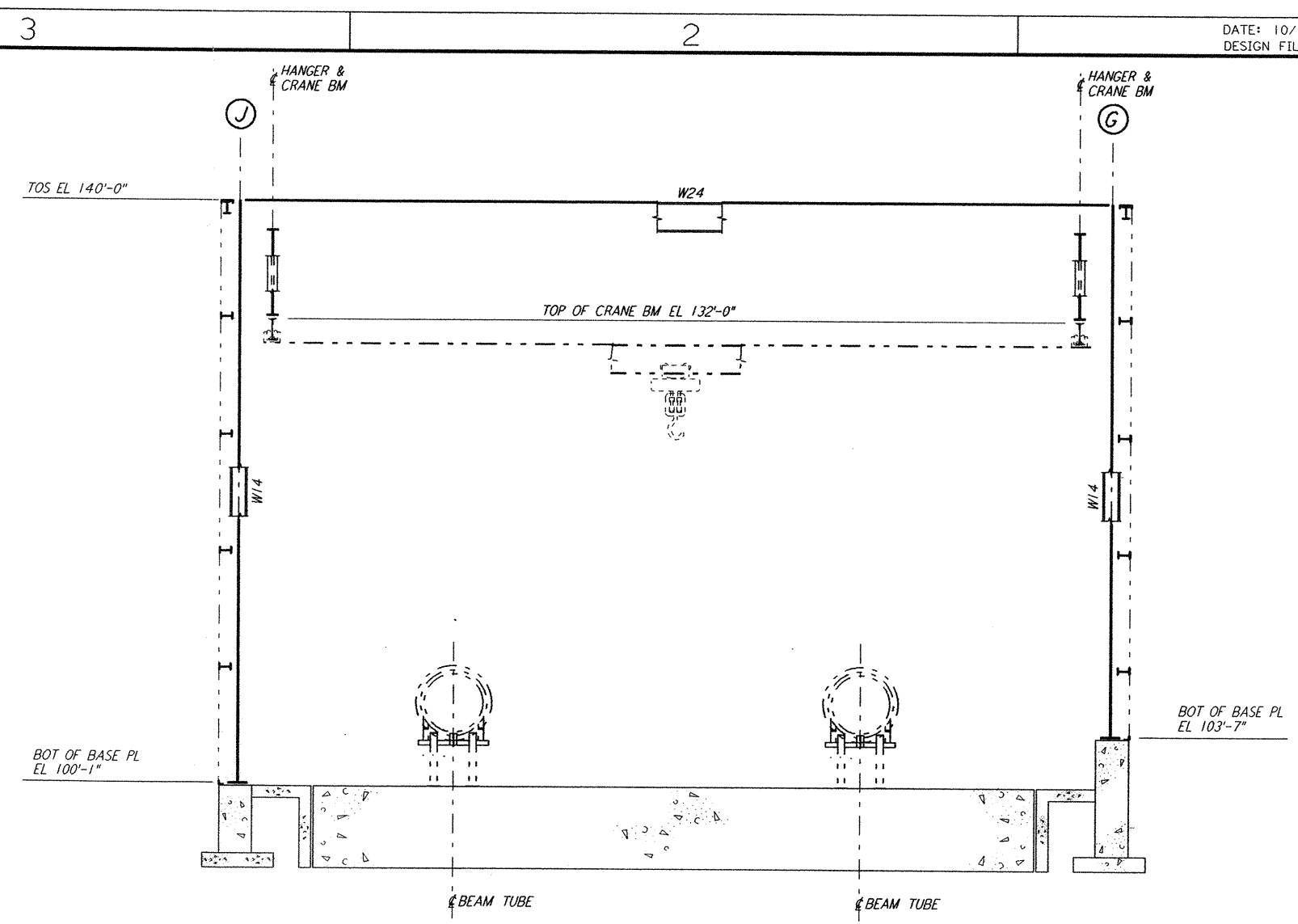


This document and the design it covers are the property of PARSONS. They are loaned only with the borrower's expressed written agreement that they will not be reproduced, copied, loaned, exhibited, or used in any other way, except by written consent from PARSONS to the borrower.

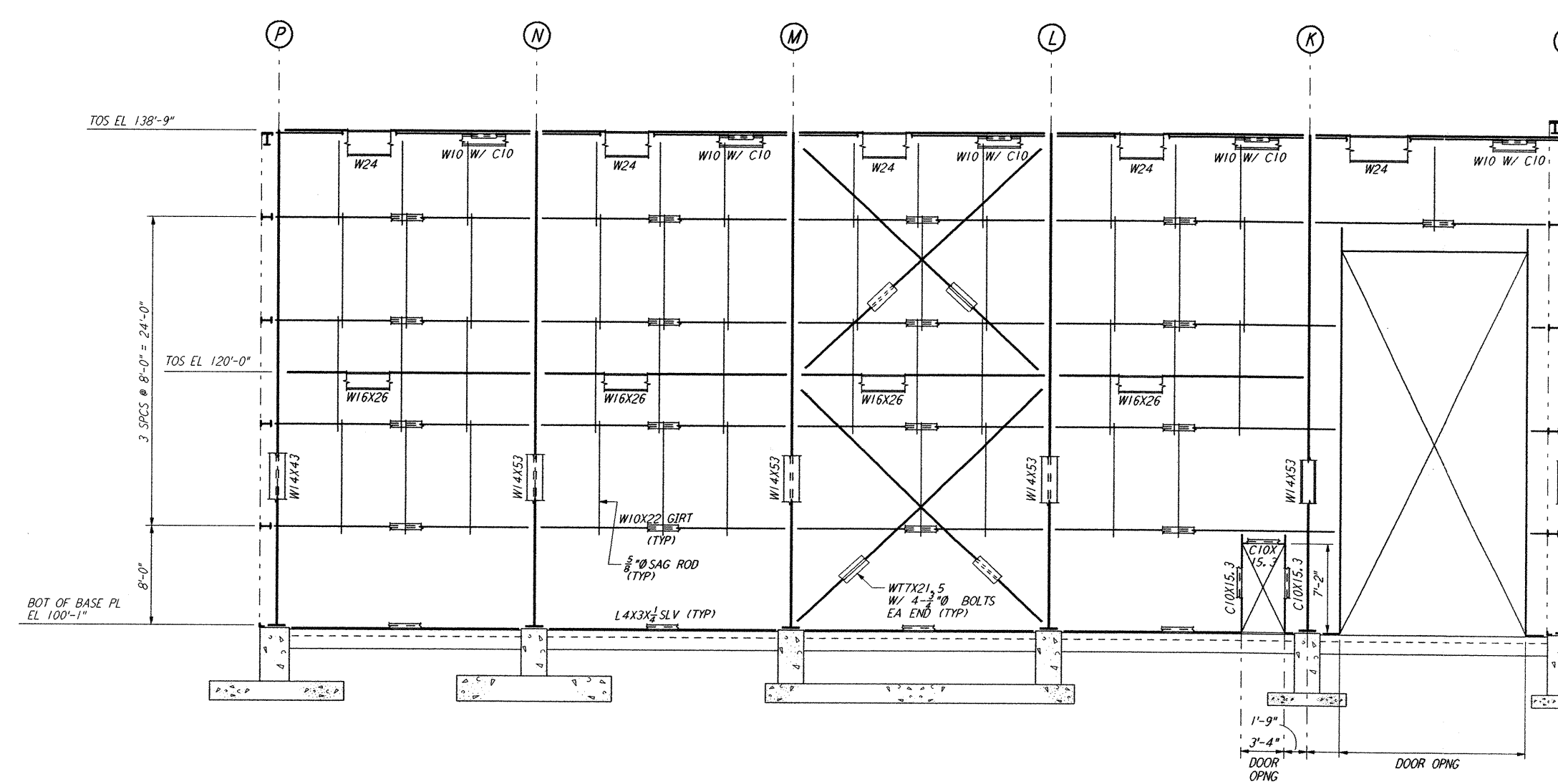
This document and the design it covers are the property of PARSONS. They are loaned only with the borrower's expressed written agreement that they will not be reproduced, copied, loaned, exhibited, or used in any other way, except by written consent from PARSONS to the borrower.



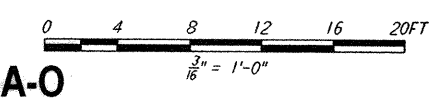
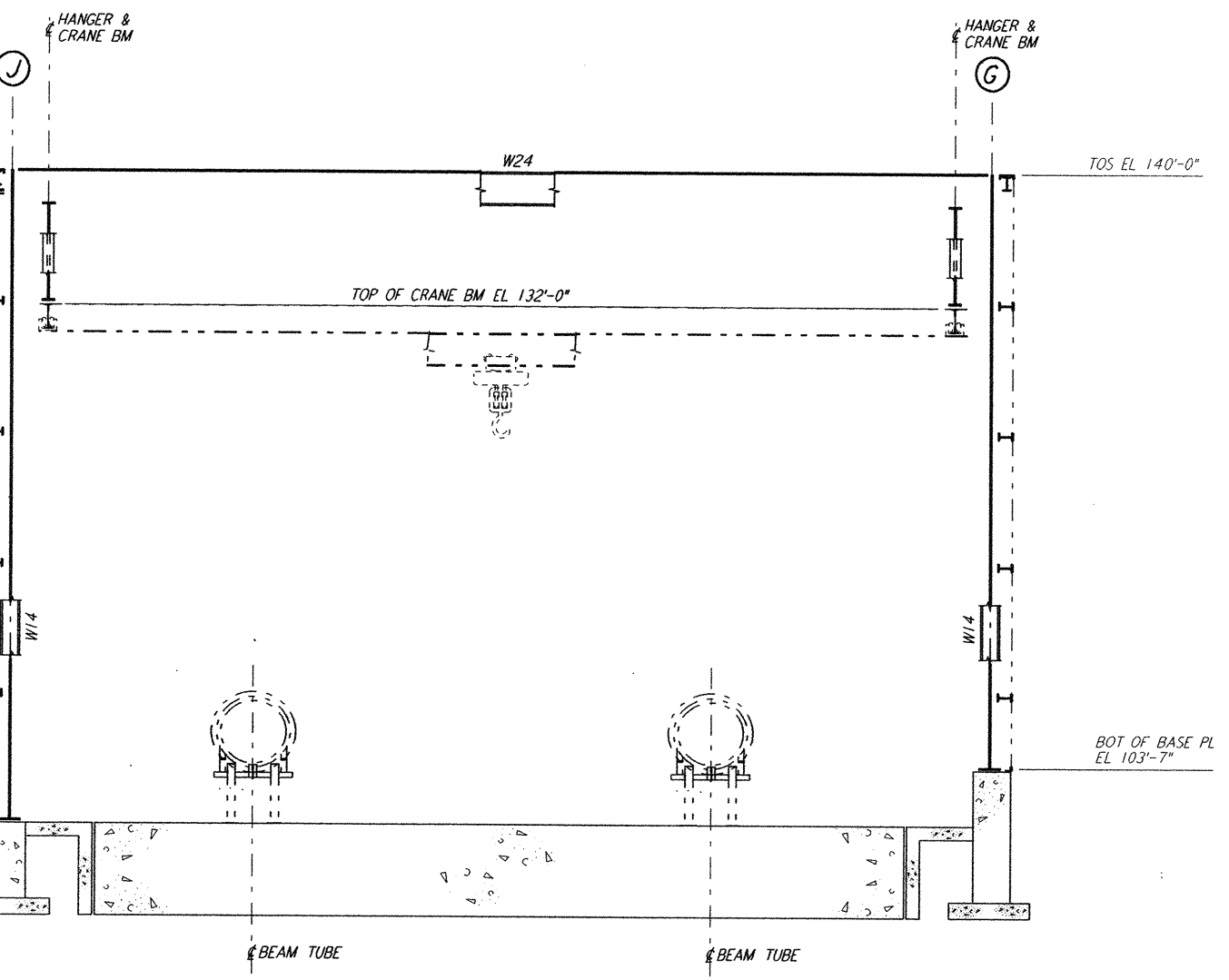
ELEVATION AT COLUMN LINE 1  
 $\frac{3}{8}'' = 1'-0''$



ELEVATION AT COLUMN LINES 2, 3 & 4  
 $\frac{3}{8}'' = 1'-0''$



ELEVATION AT COLUMN LINE 5  
 $\frac{3}{8}'' = 1'-0''$



LIGO-D960924-A-0

NO.	DATE	APRD BY	DESCRIPTION OF REVISION
9			
8			
7			
6			
5			
4			
3			
2			
1			

ISSUE	NO.	DATE	APRD BY	ISSUED FOR
A	10-31-95	TDM		PRELIMINARY DESIGN REVIEW

DATE	10-31-95
DRAWN	MCS
CHECKED	
ENGINEER	
PROJ MGR	

**PARSONS**  
 100 WEST WALNUT STREET  
 PASADENA, CALIFORNIA

**LIGO**  
 CALIFORNIA INSTITUTE OF TECHNOLOGY  
 MASSACHUSETTS INSTITUTE OF TECHNOLOGY

LASER INTERFEROMETER  
 GRAVITATIONAL-WAVE OBSERVATORY  
 SITE NO. 2 - LIVINGSTON, LOUISIANA

CORNER STATION (LVEA)  
 FRAMING ELEVATIONS  
 SHEET 1

SCALE: AS NOTED  
 CONTRACT NUMBER: PP150969  
 PROJECT NUMBER: 8094

**LA-S-108**