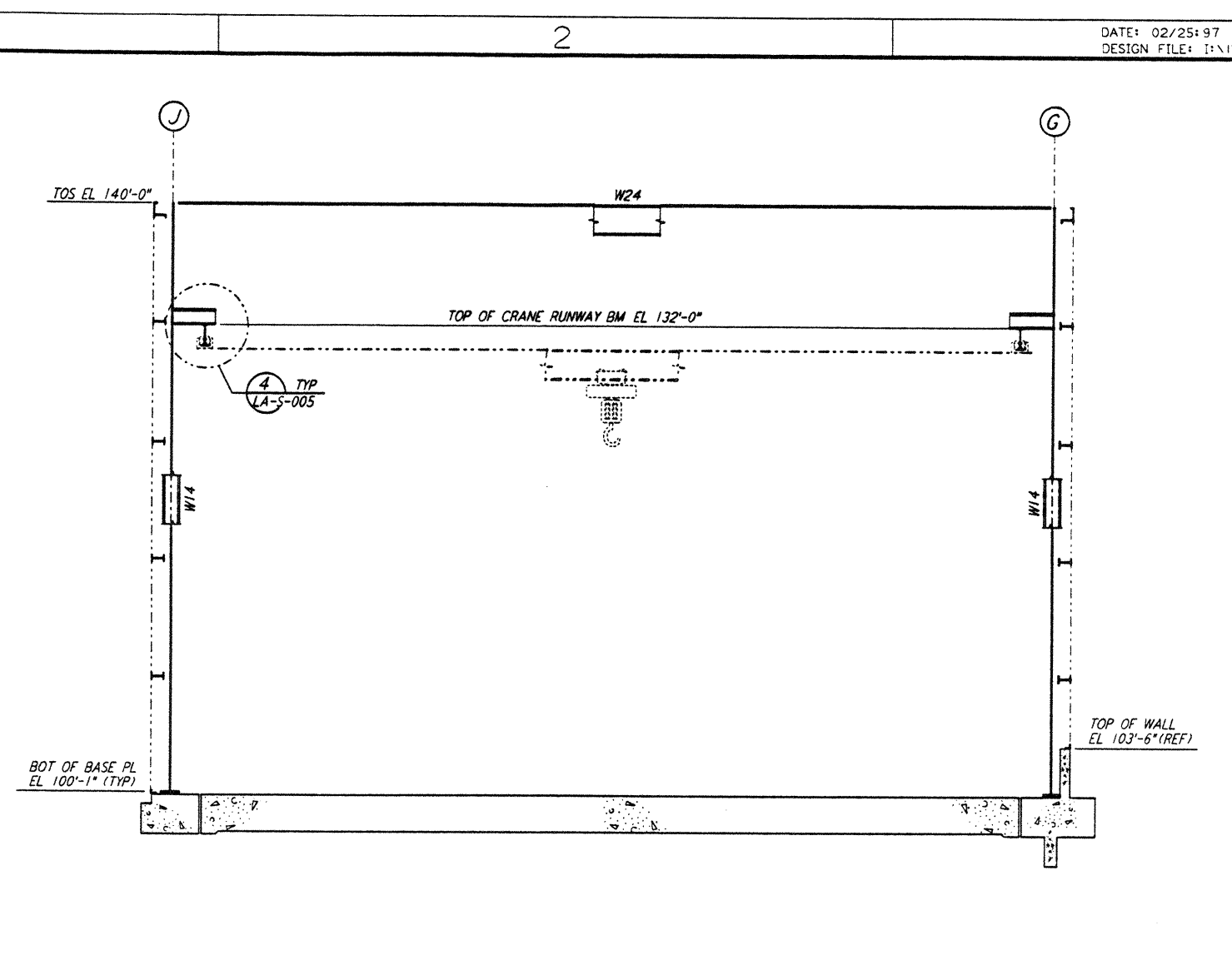
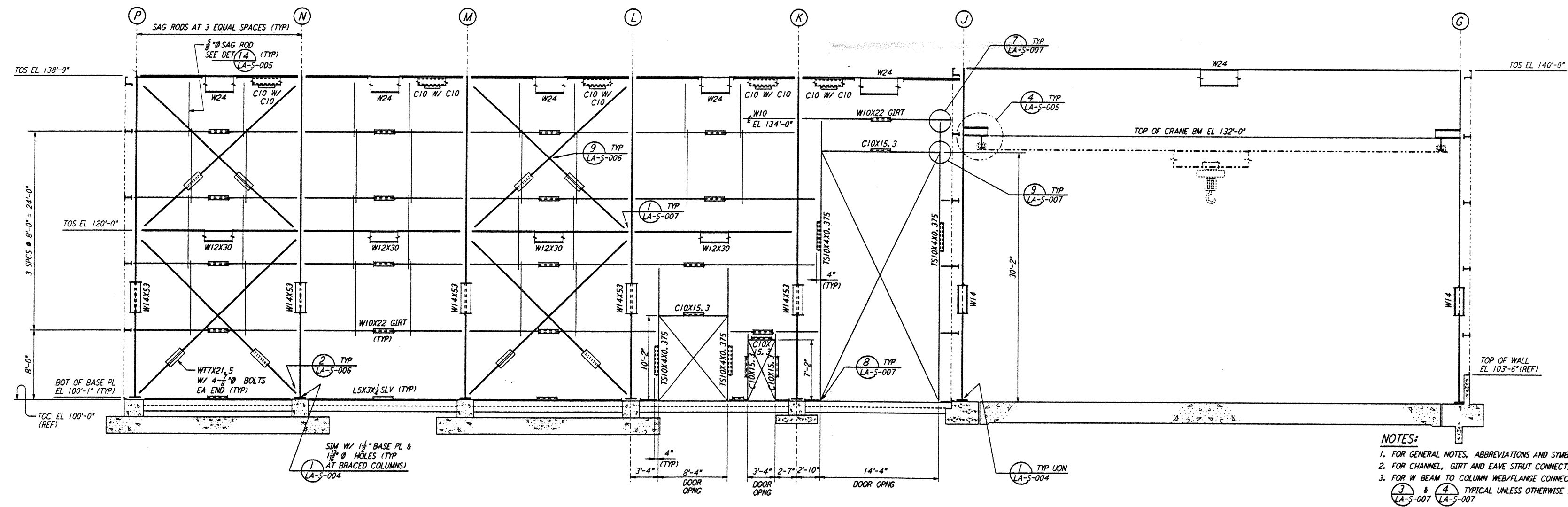


ELEVATION AT COLUMN LINE 1
 1/8" = 1'-0"

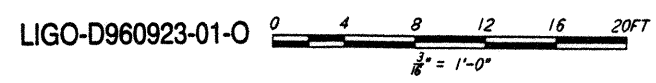


ELEVATION AT COLUMN LINES 2, 3 & 4
 1/8" = 1'-0"



ELEVATION AT COLUMN LINE 5
 1/8" = 1'-0"

- NOTES:
- FOR GENERAL NOTES, ABBREVIATIONS AND SYMBOLS SEE DRAWING LA-S-001.
 - FOR CHANNEL, GIRT AND EAVE STRUT CONNECTION DETAILS SEE DRAWING LA-S-005.
 - FOR W BEAM TO COLUMN WEB/FLANGE CONNECTIONS, SEE DETAILS (3) & (4) TYP UNLESS OTHERWISE NOTED. (3) & (4) TYP UNLESS OTHERWISE NOTED. (3) & (4) TYP UNLESS OTHERWISE NOTED.
 - FOR BASE ANGLE (LSX3) CONNECTIONS, SEE SECTION (6) LA-S-003.
 - FOR LOCATION OF INTERIOR ROOLED-UP DOORS SEE DETAIL (6) LA-S-007.
 - TRIM VERTICAL BRACING WTT STEM AS REQUIRED (1/2" X 12" APPROX) AT GIRT LOCATION TO CLEAR GIRTS. PROVIDE 2/3" TO 1" TRANSITION AT ENDS OF CUT.

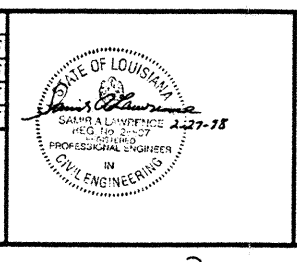


This document and the design it covers are the property of PARSONS. They are loaned only with the borrower's expressed written agreement that they will not be reproduced, copied, loaned, exhibited, or used in any other way, except by written consent from PARSONS to the borrower.

This document and the design it covers are the property of PARSONS. They are loaned only with the borrower's expressed written agreement that they will not be reproduced, copied, loaned, exhibited, or used in any other way, except by written consent from PARSONS to the borrower.

NO.	DATE	BY	CHKD	ENGR	PROJ.	DESCRIPTION
1	2-28-97	RM	FB	PK		ADDED DET REF AT ELEV LN 1

ISSUED FOR CONSTRUCTION	
DRAWN	MCS 11-15-96
CHECKED	DDM 11-15-96
ENGINEER	BP 11-15-96
PROJ.	TDM 11-15-96



PARSONS
 100 WEST WALNUT STREET
 PASADENA, CALIFORNIA

LIGO
 CALIFORNIA INSTITUTE OF TECHNOLOGY
 MASSACHUSETTS INSTITUTE OF TECHNOLOGY

LASER INTERFEROMETER
 GRAVITATIONAL-WAVE OBSERVATORY
 SITE NO. 2 - LIVINGSTON, LOUISIANA

STRUCTURAL CORNER STATION
 LVEA FRAMING ELEVATIONS
 SHEET 1

AS NOTED
 CONTRACT NUMBER: PPI 50969
 PROJECT NUMBER: 8094
 SHEET NUMBER: LA-S-107

THE P&ID WAS PREPARED BY S.F. BERRY. LIGOLAF.BDR